

Willingham News

FREE TO EVERY HOME

village website: www.willinghamlife.org

willinghamnews@gmail.com

June 2021

Let's talk about
our village



Willingham

Community Plan

Come to an informal
Community Consultation Meeting
on either 23 June or 1 July at 7 30pm
at Willingham Primary School

We need a new plan for our village
Be part of it & make your voice heard!
More information inside

Stamp Chiropody & Podiatry



Casey Stamp MCPod BSc (Hons)
HCPC registered CH15068

- General chiropody – nails, hard skin & corns
- Diabetic foot care
- Children's Feet – Growing pains, Verrucas, etc.
- Sporty Feet & associated injuries + pains
- Ingrowing toe nails
- Custom made Orthotics/Insoles
- Dancing feet – we'll keep you on your toes
- Biomechanics & Gait analysis

New Clients Always Welcome.

Find us at:

Willingham Medical Practice,
52 Long Lane, Willingham,
Cambridge, CB24 5LB

Tel: 01480 464507 or 07807505534

Also available at:

Salus Wellness Clinics
47 Norfolk St

Cambridge CB1 2LD

Tel: 07807 505534

www.stamppodiatry.co.uk

English Rose
BEAUTY HOUSE

BEAUTY • SPA TREATMENTS • RELAXATION

Specialists in Shellac Nails, Bio Sculpture Nails, Manicures & Pedicures, Spray Tanning, Hair Removal, Eyelash Extensions, Facials, HD Brows, Waxing, Tinting, Make-up and Massage.

16 Berrycroft, Willingham, Cambridge CB24 5JX
Tel: 01954 261176 Email: info@englishrosebeautyhouse.co.uk
www.englishrosebeautyhouse.co.uk



WILLINGHAM MOTORS LTD

YOUR LOCAL INDEPENDENT GARAGE FOR ALL SERVICING/REPAIR REQUIREMENTS, MOT TESTING, AIR CONDITIONING, DIAGNOSTIC SOFTWARE, EXHAUSTS, TYRES

CAR SALES – P/X WELCOME CAR/VAN STOCK LOCATOR
QUALITY VEHICLES BOUGHT FOR CASH FREE COURTESY CARS

Tel: 01954 260467/206566 E-mail: willinghammotors@aol.com www.willinghammotors.co.uk

WILLFLOWER FLORISTS

134 Rampton Road
WILLINGHAM

Tel: 01954 260 831



*Fresh Cut Flowers, Bouquets, Wreaths,
Wedding Flowers and Arrangements*

THE PLOUGHMAN HALL WEST FEN ROAD, WILLINGHAM

Book Willingham's village hall for your

Wedding Reception

Birthday Party

Private Function

Play or Musical Event

Club or Society Meeting

The Ploughman Hall

Offers:

A large hall

Bar facilities (subject to licence)

A fully equipped kitchen

Disabled friendly facilities

Ample off-road parking

Check out our competitive hire charges and make your booking at the Parish Office (01954 261027)

The Ploughman Hall – Willingham's village hall

O'MALLEY SOLICITORS

Family Law Specialists

Divorce • Matrimonial Property & Finances • Co-habitation Disputes Children Matters • Prenuptial Agreements.

With over 16 years' experience, we take a sympathetic and sensitive approach to Marriage and Family breakdowns.

Contact us on **01954 202075**.

O'MALLEY SOLICITORS

84 Rampton Road, Willingham, Cambridge, CB24 5JQ
Tel: 01954 202075 E-mail: omalleyssolicitors@googlemail.com
Authorised and Regulated by the Solicitors Regulation Authority
SRA No: 318339



www.bushelboxfarmshop.co.uk

01954 206015

Local Fruit, Vegetables, Eggs, Preserves & more
Open Tues - Fri 10 - 6 and Sat until 4



130 Station Rd Willingham CB24 5HG



*Cambs Oven
Cleaning*

**Revive Your Oven,
Contact Ian Morley on 07584 684853**



CONTENTS

June News

Brief History of Willingham – Part 26	9
Community Orchard and Willow Patch	10
Conserving the Oldest Building in Willingham	10
County Councillor's Report.....	16
Delivery Request	8
District Councillors' Report.....	16
Old Willingham.....	6
Poem for June.....	10
Readers' Letters.....	15
Reading Group Book Review	7
Willingham County School Coronation Festival.....	5
Willingham Community Planning Group	5

Clubs and Groups

Bowls Club.....	15
Gardening Club.....	6
Photography Club.....	6
Social Club	18
Women's Institute	18

Quizzes

Book Quiz	8
Sudoku.....	8
Answers.....	18

Monthly items

Bin Collections	3
Christians Together.....	11
Directory.....	23
Library	7
Medical Practice	12
On This Day in June	20
Parish Council.....	14
Thought for the Month.....	11
Young Readers' Corner	8

Willingham News is a subsidiary of Willingham News Ltd and is edited by volunteers. We do our best to ensure the accuracy of the content of the submissions, but this cannot be guaranteed. We reserve the right to edit or omit articles at our discretion. The views expressed in readers' letters are not necessarily those of the editorial team. Send your contributions to **willinghamnews@gmail.com** as an email attachment of up to 250 words (no pdfs) to arrive before the monthly deadline. The Editorial Team comprises Liz Cosford, Jane Dowle, Wendy Law, Frances Watts, James Watts and Trevor Weston.

The **deadline for your contributions is the 8th of each month**. As the library still has restricted opening, hard copy can be dropped off at 15 Balland Field.

Bin Collections – Friday except where indicated.

Saturday 5 June	Black
11 June	Blue and Green
18 June	Black
25 June	Blue and Green

To contact local police, phone 101 or email:
SCambsCops@cambs.pnn.police.uk

PLEASE NOTE:

Back issues of *Willingham News* from October 2005 to the present (with the exception of March 2006) are now available on the Willingham Life website run by WAG:
www.willinghamlife.org/page/willingham-magazine-back-issues

Advertising

We would like to thank all our advertisers for their continued support during these difficult times. It's due to them that *Willingham News* is able to serve the village. Please continue to support our local businesses now and in the future when restrictions are lifted.

Advertising is sold on an annual basis for an insert into 12 issues beginning in January. Send any advertising queries or copy to: **advertising.wnews@yahoo.co.uk**, marking your e-mails Adverts. The *Willingham News* team wishes to thank all the advertisers for their support and interest. They play a vital role in maintaining this publication and also in our community as local businesses supplying goods and services. If you contact an advertiser, please mention that you saw their advertisement in *Willingham News*. Thank you all very much.

ALAN'S CARPETS

Carpets and Vinyl Supplied and Fitted
We have been in the carpet trade for over 47! years

Samples to your home, Measure, Quote
Express delivery and fitting included

Phone 07790 681317 or 07790 544250

SUTTON TREE SERVICES

- HEDGE MAINTENANCE
- TREE REMOVAL, FELLING & REDUCTIONS
- GENERAL PRUNING
- STUMP REMOVAL
- FULLY INSURED
- NPTC QUALIFIED

Please call to discuss your requirements or to arrange a free quote.
Paul Young 07765 223 692 or 01353 775 076



Cottenham Computers

01954 593025

Call the experts for good honest advice



We will come to your home or business to fix your computer

Got any of these issues?

- ✓ Computer crashing
- ✓ Network Wi-Fi connection Issues
- ✓ Computer infected with viruses
- ✓ Windows won't boot
- ✓ Can't access your email
- ✓ Can't access the Internet
- ✓ Computer running very slow

With over 16 years experience it is likely we have seen your problem before. We are happy to advise you free over the phone..

We don't charge a fortune
So give us a call TODAY! We won't bite!

Working all day? Then we can collect and deliver FREE to and from your work place*

* Within 10 Miles of Willingham

We cover Willingham & surrounding towns & villages

For all computer related problems give us a ring!



www.cottenhamcomputers.co.uk



Karen BEAUTICIAN

DAYTIME & EVENING APPOINTMENTS

95 Rampton Road
Willingham
Cambridge CB24 5JQ

Tel: 01954 260375
Email: karendench@hotmail.com
www.karenbeautician.co.uk



ARK FACIALS
SHELLAC/OPI
MANICURES
AND PEDICURES
ST. TROPEZ
SPRAY TAN
AROMATHERAPY
MASSAGE
TINTING
HOPI EAR
CANDLES
EAR PIERCING
MAKEUP

MARK BIRD
ELECTRICAL
SERVICES

Mark Bird

Electrical contractor
NICEIC Domestic Installer
Part P Approved
Tel: 01480 493008
Mobile: 07961 505189
Email: mbird494@btinternet.com



CHIMNEY SWEEP

J. L. Wight

Guild of Master Sweeps, Certificates issued
Advice given/problems solved

01954 253315

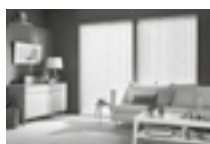
www.camsweep.co.uk

9 Cow Lane, Rampton



J&G Blinds Ltd

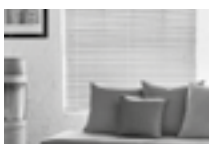
Conservatory & Window Blinds



Vertical Blinds



Roller Blinds



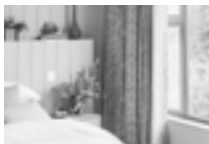
Venetian Blinds



Roman Blinds



Shutters



Soft Furnishings



Conservatory Blinds



Perfect Fit Venetian Blinds



Fly Screens

Tel: 01954 261149

Email: jandgblinds@aol.com

Universal Fencing Co Ltd

Established
30 Years

Tel: 01954 230860

mob: 07786012990

www.universalfencing.co.uk

SUPPLY ONLY OR SUPPLY AND ERECT
FREE ESTIMATE



Palisade



Featheredge



Field Gates



Security Fencing

8 Arthur Court Norman Way, Over, Cambridge, CB24 5AL

Open: MON-FRI 7.30 - 5pm

Commercial, agricultural, industrial & domestic fencing contractors



Church End Carpet & Vinyl Centre

We are a family run business, established in Cottenham in January 1982

We offer a comprehensive range of quality carpets, vinyls and laminate flooring at highly competitive prices with a great service and fitting.

76 High Street
Cottenham
Cambridge
CB24 8SD

Email: sales@churchendcarpets.co.uk
Tel: 01954 250287
www.churchendcarpets.co.uk

Open: Monday, Tuesday, Wednesday, Friday: 10:00 - 18:00
Saturday: 10:00 - 17:00

Willingham Community Planning Group

It doesn't matter where you live, or how long you have lived in Willingham, the Willingham Community Planning Group (WCPG) want to talk to you.

Who are the WCPG?

We are simply a team of villagers committed to ensuring that Willingham has a Community Plan. Over the next few weeks, you are going to hear a lot more from us! We are not experts or local government representatives and we come from all walks of life. Some grew up in the village and some moved in recently, but we all want a great future for Willingham. However, we cannot do it alone - we need to consult and talk to you about what you love about living in Willingham and what needs improving.

What is a Community Plan?

A Community-led or Parish Plan is a document based on your views about what is important for local government to tackle. You can read more here: www.scambs.gov.uk/your-council-and-democracy/parish-councils/community-led-plans/.

It is based on evidence gathered via a survey of all those Willingham residents who give their opinion. Together we identify where improvements need to be made. The logo on the cover reflects that we are all in this together and that children and young people are at the heart of the project. After all, it is the future we are taking care of!

WCPG are designing a new survey of the opinions of all Willingham residents via a questionnaire that will be sent out in the autumn. We will then analyse and digest the information, before producing a report that will be important evidence to underpin the future development and investment in the village. It will be publicly available and sent to Willingham Parish Council, Cambridge County Council, South Cambridgeshire County Council, our MP and other agencies.

Haven't We Already Done This?

The last Community Plan was 13 years ago in 2008 and it's fascinating reading! Here is the link www.willinghamparishcouncil.gov.uk/wp-content/uploads/2020/10/Parish-Plan-Summary-Report.pdf.

There have been significant improvements in the village, thanks to members of the Parish Plan team of 2008 (that evolved into Willingham Action Group (WAG)), the Parish Council and other dedicated villagers. The 2008 plan helped lay the groundwork for the Community Orchard, the QEII play park, the Willingham Youth Trust and the very first Beer Festival as well as many social events and village societies. We are going to spotlight some of these in subsequent *Willingham News* articles.

However, times change. There is much still to do, and new challenges have arisen, such as flooding and the need for a new relationship with Northstowe. It's time to update, reset and move forward together.

What Do I Have To Do?

Come and meet the team and tell us what's important to you. Subject to being allowed to meet, we will hold two Community Consultation Meetings at the Primary School on **23 June** and **1 July**, both at 7 30 pm. These will be informal get-togethers to talk about the project, meet the team and hear what's important to you. Both meetings will be identical in format, so you only need to put one in your diary. Please register your interest for either date by sending a short email message to: communityplan@willinghamlife.com, or telephone 07529 222579. It would be great to see you there!

There are many good reasons for us all to get involved in this community survey. Our views will help formulate policy and build our community as we move forward. All we need is for people to get together and talk to us!

Willingham Community Planning Group

Willingham County School – Coronation Festival

Wednesday and Thursday, 10 and 11 June 1953, At 8pm

The Programme for this Celebration in 1953 includes the names of the Headmaster, Arthur G Caple, his six members of staff, four part time staff, who taught Music and Needlework, Domestic Subjects, Gardening and Woodwork, and the four members of the Dining Hall Staff.

The next pages give the programme for the entertainment. The Choir was responsible throughout the evening for a selection of School Songs, a selection of Old Time Songs and Coronation Songs. The school songs included 'The Ballad of London River' and a folk song called 'Hope will Banish Sorrow'. The Coronation songs included 'Elizabeth of England' and 'In a Golden Coach'. The Old Time Songs are not named, but the audience was urged to join in the choruses. The finale for the choir and the whole company included 'Land of Hope and Glory', 'Let us Sing

unto her Majesty' and 'The Changing of the Guard'.

This was only the musical part of the entertainment, as there were also a large number of physical activities. The Infants did Maypole Dancing, the senior girls Music and Movement, a selected team demonstrated Agility Exercises and both senior boys and girls showed off their Team Games, finishing their contribution with two Square Dances. There were also four National Dances, one from each of the four British nations of the United Kingdom.

The last pages give the names of the children who took part – 79 girls and 69 boys in all, many of whom stayed on in Willingham as adults.

My thanks to Teresa and Peter Cornish for passing on the programme for me to send to the *Willingham News*.

Anne Kirkman

Old Willingham

Here is the 'down train', running towards Cambridge, at Longstanton Station around 1910.

In the foreground a porter is loading large trunks and, further down, several apparently well-to-do people are boarding. The station shelter on this platform was always pretty basic but was there right up to the demolition for the Busway.



The arrival of the railway in the mid 1800s boosted growth in the Village and resulted in it growing to the size it is today.

The coaches are old six-wheel compartment type from the Victorian era. They must have been at about the end of their useful life when the picture was taken.

See more photos at www.oldwillingham.com. If you have stories or memories about this picture, please contact Jon Edney, 31 High Street or oldwill@oldwillingham.com.

Willingham Photography Club

Under current conditions, we are not meeting in person, but we continue to aim to learn more about photography and to enjoy ourselves. There is a monthly assignment and photographs can be submitted online for consideration and feedback from our resident professional photographer.

The theme for June is *Decay* – (*Rust, peeling paint, wood rot, mould etc*). Photographs should be submitted by **21 June** via www.willinghamphotoclub.org.uk following the link to the Virtual Assignments Google Drive.

We cordially invite anyone who enjoys photography to get in touch and see what is on offer. Your expertise level does not matter; nor does the nature of your camera.

The membership cost is £20 for six months, with the first month free of charge, however, subscriptions are currently deferred.

For further details, please contact Steve Harding 07595 668161 or visit our website at www.willinghamphotoclub.org.uk

WILLINGHAM GARDENING CLUB

Over the Garden Fence

The longest day of the year is 21 June and the extra light and warmth encourages the garden to put on an exuberant burst of growth.

Weeds!

This extra light and warmth also means weeds will sprout up from seemingly nowhere. Keep on top of them by hoeing regularly in dry conditions. If you can get out into the garden after a heavy shower, the weeds will put up less resistance. Even the deep-rooted dandelions will pull up easily from the wet soil with an additional twist to the plant. Annual weeds in flower that, even when pulled up, are capable of producing wind-dispersed seed (e.g. Groundsel, Willow Herb, Dandelion) are best dunked in a bucket of water for a few days before composting. Dug-up roots of the common perennial weeds (such as Ground Elder, Bindweed) can be composted once they have been dried in the sun (and are unable to re-sprout).

Safety First

Make sure cane tops are safe. If the tops of supporting canes used for crops such as Bush Tomatoes, Dwarf Beans or flower stems are lower than chest height, they can prove to be a serious danger to your face and eyes as you bend down into a crop for picking or when weeding them. Protect yourself by covering tops of canes with upside down pots, plastic bottles or even champagne (or prosecco!) corks. You can also buy cane toppers that will grip the canes and are specially made for the job.

Watering Tubs, Hanging Baskets, and the Garden in the Hot Weather

Try not to let hanging baskets and tubs dry out as the first water will just run off and not soak into the compost. Give the first water application time to soak into the compost, then after a while, water again for a better take up. The best time to do your watering is early morning or late afternoon. The best time for the garden is from 6 to 10 am – before the heat of the day sets in – the next best time is roughly 4 to 7 pm.

Never water at midday? The thought on this one is if the plants are wilting, they need water, regardless of the time of day. But there's some logic as to why you should watch how you water in the middle of the day. The surface of the soil or compost will be a lot hotter and you will get much more evaporation, more quickly, so it's more wasteful and less beneficial to the plant per litre applied.

Sometimes, droplets of water on the foliage acts as miniature lenses so you can cause scorching. This can happen particularly in a greenhouse. Some infections such as Powdery Mildew can be made worse by adding moisture to the air. But some pests, such as Red Spider Mite, hate dampness, so by watering at midday on a hot day you could be helping to deter infestation.

Carol Bailey

Willingham Library

www.cambridgeshire.gov.uk/library

0345 0455225

Current Opening Hours:

Tuesday 2 – 6 pm

Friday 10 am – 2 pm

The Library Is Open For 'Managed Browsing'

This means you may enter the library (wearing a face covering) to choose your own books, return books, pick up reservations, *Select and Collect*, speak to staff and use a pre-booked computer.

What Will Customers Need To Do?

- Bring your library card.
- Use the hand sanitiser provided upon entering the library and when issuing your books.
- Scan the QR code or provide details for Government Test and Trace records.
- Please be patient. We need to limit the number of people inside the building, and you may be asked to wait outside for a short while.

Digital Services

We have a wide range of eBooks, eAudio books, eComics and eMagazines which you can access online without visiting a library. Please see: www.cambridgeshire.gov.uk/residents/libraries-leisure-culture/libraries/library-online.

Overdue Charges – There will be no reintroduction of overdue charges at this time.

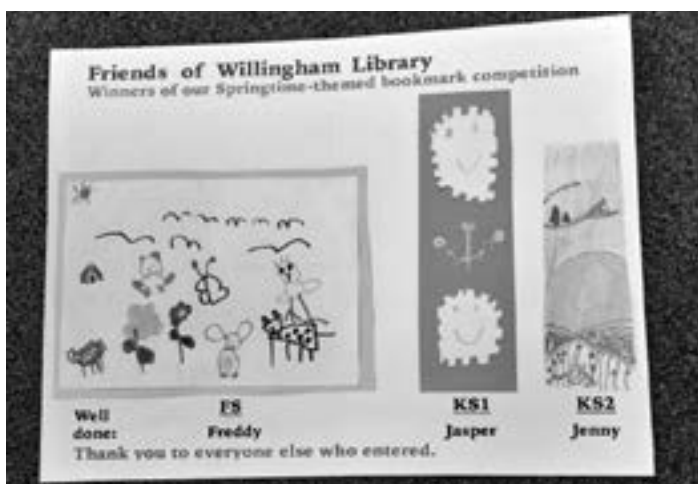
This information is subject to change. The most up-to-date information will be displayed in the library window and at www.cambridgeshire.gov.uk/library.

Friends of Willingham Library (FOWL)

Thank you to everyone who participated in the *Design a Springtime Bookmark Competition*. We had some really super entries. It was difficult to choose the winners but eventually the following three were chosen:

- Freddie – Foundation Stage
- Jasper – Key Stage 1
- Jenny – Key Stage 2

The winning bookmarks are currently being displayed in



the window at the library. If the entrants would like their creations returned, they will be available from the library until the end of this month.

Unfortunately, there is no news as yet about the return of our activities based in the library. We hope this will be soon!

Cambridgeshire Libraries News

The Library Presents

This programme of arts events in libraries is back for a brand new Spring season. Activities are taking place at a variety of outdoor locations and there is also a selection of online workshops, ending on **Saturday 17 July**. Tickets are now available at www.library.live/the-library-presents.

Local and Community History

Perhaps you want to start researching your family tree? Study local food or crafts? Get help with some homework? Maybe find some good questions for a local quiz?

Whatever your interest, Cambridgeshire Local Studies can help. With maps, books, pictures, photographs, newspapers, and free access to the Internet, your library is a great place to get started on your research and find the answers to your questions.

Every branch library has a selection of local books and larger branches have significant collections about the area, but the largest reference stock is the Cambridgeshire Collection in Cambridge Central Library. We offer materials to help with everything from general interest to academic study, and there is a wealth of items to look at for information and inspiration. We also have experienced staff on hand to help with your queries. Ask a librarian – the original search engine! www.cambridgeshire.gov.uk/residents/libraries-leisure-culture/local-studies.

Reading Group – Book Review

The Winter Ghosts by Kate Mosse

This is the story of a young Englishman's strange adventure in the South of France in 1928. Freddie has been psychologically damaged by the death of his older brother in The first World War and, after leaving hospital, decides to do a motor tour in the region. After an accident in a snowstorm he comes across a small and depressing village called Nulle, where he is invited to attend the village feast. In fact, whether through a timeslip or a delirious vision, he is actually at a feast which took place in the 14th century. There he meets a young girl called Fabrissa who tells him about the massacre of the Cathar population of Nulle, who were walled up in a cave where they had taken refuge. The shadow cast by this event had hung over the village ever since and the 'winter ghosts' could still be heard whispering in the cold air of the valley. Freddie is enabled by the phantom of Fabrissa to find the cave and release the skeletons for burial. Because of this he and the village both recover from their depression.

The Reading Group gave the book high marks and thought it an interesting read, although some found the historical content of the book more interesting than the ghost story and would have liked it to have been more fully explored.

Sudoku by Willow

	7		9	3				
1								
				1	7		3	
	4		2			8		
	3	9			4			6
						5		
					3	2	6	
	9	8						4
7	2				1		5	

Answers on page 18.

Book Quiz for June

Answers on page 18.

This month here is a selection of family members in book titles. Have fun finding the authors.

- 1 *Uncle Tom's Cabin*
- 2 *My Cousin Rachel*
- 3 *The Taxidermist's Daughter*
- 4 *Sons and Lovers*
- 5 *My Sister's Keeper*
- 6 *The Illustrated Mum*
- 7 *Gangsta Granny*
- 8 *Uncle Vanya*
- 9 *The Time Traveler's Wife*
- 10 *Father Brown*

Christine Lacey

WANTED – someone to Deliver Willingham News to Millfield and Westfield

I need someone to volunteer to cover deliveries of the *Willingham News* to the residents of Millfield and Westfield each month. Ideally the Volunteer would be a local resident and the round could be split if we have more than one volunteer.

Unfortunately, if nobody comes forward, I cannot guarantee that *Willingham News* will be delivered to these addresses in the future.

So please get in contact if you can help – my email address is clarkdavid99@yahoo.com.

David Clark



Young Readers' Corner

Guest Editors this month – Sofia and Juliet Cusuman

Thinking about June

The **summer solstice** is on 21 June. It marks the start of summer and it is the longest day of the year when the Earth's North Pole is tilted closest to the sun.

On this day, the sun will rise at 4 38 am and set at 9 25 pm making the daytime 16 hours, 46 minutes and 24 seconds long. This is a second longer than the day before!

The term solstice is made up of the Latin **sol** meaning **the sun**, and **sistere** which means **make stand still**.

Fun facts about June

- National **Chocolate Ice Cream** Day is on **7 June**. It is a great opportunity to go out and enjoy some delicious chocolate ice cream!
- **Father's Day** takes place on **20 June**.
- **The Queen** is lucky to have two birthdays. Her real birthday is in April, but she usually celebrates her birthday on the second Saturday in June. This year it is on **12 June**.
- **June** was a popular name for girls and boys in the 1920s. Do you know anyone named after a month?

Two Jokes for June

Q – Why did the Dolphin cross the beach?
A – to get to the other Tide.

Q – What do you call a Snowman in June?
A – A Puddle!

Your Perfect Summer – starting in June of course!

What would be your perfect summer? Trips to the beach maybe? A day at a theme park? A picnic with family and friends? Or a swim in a pool? Mirrored sunglasses show a reflection of what the wearer is looking at. Use the sunglasses template to create a scene of your perfect summer.



Part 26 – Victorian Willingham – Farming and Transport

Reign of Queen Victoria, 1834 – 1901

Land Ownership Changes

The Victorian era saw profound changes in the structure of agriculture in Willingham. Ownership changed dramatically following the Enclosure Acts. By 1853 over 3,000 acres of open fields, meadows and common land had been divided and enclosed. Jesus College bought 275 acres, eight owners were allotted more than 100 acres and 16 owners took between 50 and 100 acres each; there were 150 smaller landowners. These holdings offered opportunities for more efficient farming methods, including gradual mechanisation. However, this also provoked opposition from some groups of agricultural labourers who saw mechanisation as a threat to their jobs. They became known as the Swing Rioters and used arson as a means of gaining publicity for their cause. The first of the large Willingham fires in 1830 was allegedly started by an arsonist as a protest against the use of a new threshing machine.

The Balance of Farming Changes

During the early part of the century dairy farming dominated the scene. Much of it was for cheese production, ironically under the name of Cottenham cheese. In 1808 there were 1,200 milking cows usually on the commons, and a Cattle Club was established in 1837 to help small farmers. After enclosure this number fell and by 1865 had fallen to 600 cattle, while sheep had increased to 750 and pigs to 850. On the arable side the focus remained mainly on wheat. A reflection of this was the building of a new eight-sided smock windmill in 1828 in Mill Road (still standing and recently renovated) in addition to the three existing windmills on Rampton Road, Long Lane and Station Road. At the same time there was a slow but significant increase in the area of orchards, and fruit was being sent to London markets in modest quantities from the 1820s.

Gardens

The mid-Victorian period also saw the growth of ornamental gardening on a national scale. The traditional Willingham cottage garden was long and narrow. They were commonly used to grow vegetables and a handful of flowers as well as keeping hens and pigs. News of the Californian Gold Rush of 1849 focused national interest on the giant redwood conifer trees growing there. Seedlings of the Giant Sequoia, or Wellingtonia, were imported in the 1850s and became fashionable in the gardens of large houses. Willingham was no exception and three of the very tall Wellingtonia trees from that time can still be found in gardens in Long Lane, Fen End and High Street.

The Railway Comes to Willingham

The railway came to Willingham in 1847 as part of a new branch line from Cambridge to St Ives (now the route of

the Guided Busway). It was served by the Great Eastern and Midland railways that provided daily connections via Cambridge to the rapidly expanding cities of London, Manchester, Liverpool and beyond. Freight delivery changed overnight from the speed of the horse and cart at 10 mph to the speed of the train at 50 mph. For agricultural produce, especially perishable produce, this change opened up potential markets on an unprecedented scale.

Orchards and Horticulture Take Off

There followed a rapid expansion of orchards and horticulture, driven by a number of Willingham farmers to exploit these new markets. Orchards do not appear overnight, but during the 1850s, 1860s and 1870s the acreage steadily increased to over 200 acres by the end of the century (increasing further to 750 acres by 1935). Plums and Gages then comprised half the acreage, closely followed by Apples, but also Pears and Cherries. Fruit bushes producing soft fruit also increased to cover a further 150 acres by 1895. The emphasis here was on Raspberries and Gooseberries and later Strawberries as well as Asparagus. Yet another development was growing Flowers, both under glass and outside.



Thodays' Vineries in Long Lane c1890 from a pencil drawing

One of those leading the field was the Thoday family, who created a vast enterprise under glass at the Vineries in Long Lane, between Silver Street and Newington. They built seven enormous glasshouses 75m long, 7m wide and 4m high, in which they grew Vines, Peaches, Nectarines, Strawberries, Cucumbers, Tomatoes, Asparagus and Flowers, ranging from Spring Bulbs to Chrysanthemums, Lilies and Palms on a large scale. *The Gardeners' Chronicle* published a very detailed article in 1895 covering the enterprise, in which the writer marvelled not only at the quality and quantity of Fruit and Flowers, but also at the 'orchard-blossomed whiteness of the entire area surrounding Willingham' at the time of his spring visit.

Alan Fawcitt

Next time: Victorian Willingham – Religious Rivalries

Community Orchard and Willow Patch

Several items have appeared in *Willingham News* relating to the production of a new Parish Plan. For those who have moved to the village in recent years it might be of interest to know that the creation of the Community Orchard was in part inspired by the first Parish Plan published in October 2008. The wish for tree planting and more open space for family enjoyment featured in the recommendations. The Willingham Action Group, formed after the Parish Plan was completed, have worked closely with the Parish Council in realising many of the recommendations presented.

An application for funds was successful, which financed three components of a tree planting project – village planting, QEII planting and the establishment of the Community Orchard and woodland area in what was formerly the village Recreation Ground until the mid 1960s. The orchard comprises 114 mixed fruit and nut bearing trees on an eight metre grid, which were all sponsored. The woodland area was planted with 25 native species totaling nearly 750 trees. The planting was undertaken by volunteers over several winter seasons between 2012 and 2015.

When establishing the woodland area, a small patch of willow was included with a view to harvesting willow canes for those interested in weaving. Two varieties were planted – Green Dicks and Brittany Blue. Although there are still gaps to fill, the willow could now be cut, which in turn would improve density and quality. Intermittent weeding, tidying and replanting has taken place, but the patch does need more dedicated attention by a group with an interest in the end product.

There are those with a declared interest and experience already involved, but others coming forward would be very welcome so a group could be formed to look after the patch, harvest and do something creative with the canes. It would be possible to arrange workshops if there was sufficient interest. Please contact graham@gwmumby.co.uk.

A footnote for those who have not visited the Community Orchard – it is to be found on the Earith Road, on the right-hand side as you are leaving the village, where the de-limit road speed signs are located. Please do visit and enjoy this well-loved village amenity.

Graham Mumby - Willingham Action Group

A Poem for June

June is the gateway to the Summer
when the evenings linger on.
Little creatures scurry about
and the birds have a special song.

June brings its beautiful flowers
and the grass is soft at our feet.
Little creatures scurry about
and the birds sing songs so sweet.

Christine Lacey

Conserving the Oldest Building in Willingham

Willingham Parish Church is the oldest building in the village and dates back to the 13th century.

It is a Grade 1 listed building with three outstanding features which are nationally recognised:

- a medieval double hammer beam oak roof with carved angels.
- 34 medieval wall paintings carried out over 400 years.
- a Sacristy built entirely of stone including stone roof arches.

Modern facilities are provided in the Octagon, which is linked to the Church and where several local groups were meeting regularly before the present lockdowns and restrictions.

All this forms the 'fabric' of the building, which is funded and maintained by the members of the Church community on a day to day basis, supervised by a Fabric Secretary, who initiates and supervises the work on regular and one-off maintenance issues as they arise.

Every five years an independent Architect (who specialises in old Church buildings) carries out an inspection to identify and prioritise the remedial or protective work that is required to keep the Church in good condition. The most recent survey will have taken place within a few weeks of the publishing of this edition of *Willingham News*.

The current Fabric Secretary is resigning after many years valuable work helping to maintain and conserve this wonderful building and the search is on for someone to take over the responsibility of guiding this valuable conservation work.

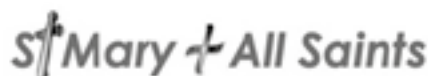
If you have an interest in heritage buildings and believe it is important to conserve the Church, which has been important to life here in Willingham for centuries, then please consider helping with this work by taking on the role of Honorary Fabric Secretary to help deal with the findings of the Architect's Review in May and to supervise ongoing care and attention.

No specific experience is required, nor is it necessary to be a church member, but a technical/construction background would be helpful.

The post involves liaison with the Parochial Church Council, the Church Architect, and other church and conservation authorities, so good communication and liaison skills at all levels are essential.

If you are interested in talking about this important role please contact Rev Simon Gill on 01954 230434 or James Watts 01954 200542.

CHRISTIANS TOGETHER IN WILLINGHAM



CHURCH STREET, WILLINGHAM
www.5folds.org.uk

Services in Church

13 June	11 00 am	Holy Communion
27 June	11 00 am	Morning Prayer

Other Services

We are continuing to provide online and pre-recorded Sunday Services as well as the services in Church. There will be a normal Sunday Service via Zoom at 9 30 am on **6 and 20 June**. If you would like any further information on these services or the joining instructions, please contact Lucy Cleland. Throughout the month an audio copy of a separate weekly service will be recorded and is available via our website or by getting in touch with one of the contacts below.

Please do keep checking our Website, Noticeboards and Facebook page for news about all these services and other Notices.

The Octagon

We have been working to bring The Octagon back into use as a space for meetings and other gatherings for local organisations and groups, as lockdown restrictions are gradually relaxed. We will be pleased to hear from anyone considering regular or one-off bookings. Please contact Simon Gill or James Watts for further information.

Cleaner for the Church and Octagon

We are looking for a cleaner for the Church and the Octagon. The hours required (along with timing and terms) are expected to average out at about 2 ½ hours per week. If you are interested, please contact James Watts in the first instance,

Contact Details

Clergy:

Simon Gill 01954 230434 or simon@5folds.org.uk.
 Lucy Cleland 01954 277758 or lucy@5folds.org.uk.
 Jenny Hill 07970 949331 or revdjennyhill@5folds.org.uk.
 Deputy Warden:
 James Watts, 01954 200542 or smas17jw@yahoo.com.

Parish of the Sacred Heart of Jesus

Roman Catholic Diocese of East Anglia
www.sacredheart-stives.org

Services have now re-started at St Ives. Numbers are limited but you may join any Mass live-streamed. Details at www.sacredheart-stives.org.

For more information about the Diocese of East Anglia, please see www.rcdea.org.uk.



George Street, Willingham, Cambridge CB24 5LJ
www.willinghambaptist.org and

At the time of writing this in early May, we are still gathering virtually as a fellowship on Sundays and also for our monthly mid week reflection. We have not yet made a decision about coming back to meeting together in the church building, but we are hoping that we will be able to gather again once restrictions are lifted.

Keep an eye out on our Facebook page for updates on our gatherings over the next few weeks. We have a monthly Café Church at Home, which is a much more informal style of meeting together and we warmly welcome families to join us for these.

If you would like to join us at a gathering, Café Church or mid week reflection, please get in touch secretary@willinghambaptist.org or phone 01954 263108 and we can send you the information you need.

Emma Launchbury
 Church Secretary

Thought for the Month

How Do You Eat An Elephant?

How do you eat an elephant? Sounds an impossible task - it's far too big!

The answer is slice by slice. There seem to be so many things going wrong in our world at the moment it can feel overwhelming. Bill Hybels, the leader of a big church in America, talks of one period in his life when everything was going disastrously wrong: his church was on the verge of bankruptcy and people were resigning from their jobs. He spent an entire night in prayer and in tears pleading for God to intervene and to show him how to turn the situation around. The answer to prayer was simple: 'Bill, go to work tomorrow'. Just carry on. By carrying on and dealing with the problems each day brought, he saw his church not only survive but ultimately thrive.

In Chapter 6 of St Matthew's Gospel Jesus tells us not to worry about tomorrow, for today has plenty of trouble in it! Not easy, when there are so many things to concern us – but advice worth following. Keep our eyes and effort focussed on whatever is to do today. That way, maybe we will succeed in eating a whole elephant!

Every blessing in Jesus,

Simon Gill
 Team Rector, Parish Church



WILLINGHAM SURGERY & LONGSTANTON BRANCH SURGERY

Reception Tel: Willingham 01954 260230 Longstanton 207600 Dispensary 207602

District Nurse Team: 01223 726469 Option 2 Health Visitors: 0300 029 50 50

Out of hours cover: Ring 111 Website: www.willinghammedicalpractice.nhs.uk

A&E is not an alternative to a GP appointment. If we are closed, please call 111.

11 Tips to Cope With Anxiety About Coming Out of Lockdown

Easing of lockdown will allow us to get back to the people and things we love, but it is normal to feel worried about going back to something more normal as lockdown restrictions loosen.

The coronavirus (COVID-19) outbreak has been hard for everyone and we have all experienced the effects differently, including those of us who have been shielding. Even positive change can lead to anxiety, and it can take time to readjust to things we have not done for a while. Feelings of post-lockdown anxiety are likely to pass with time as we get used to the new normal but it is important to do what we can to take care of our mental health.

There are lots of things that can help you to manage these feelings and make it easier to adjust. The NHS website provides the following top tips for taking care of your mental health as things change.

- 1 Go at your own pace
- 2 Do not avoid things entirely
- 3 Get your information from the right sources
- 4 Discuss any changes with others
- 5 Make time to relax
- 6 Challenge unhelpful thoughts
- 7 Tell someone how you feel
- 8 Plan social occasions
- 9 Find routine where you can
- 10 Write down your thoughts
- 11 Focus on the present

For further information please visit www.nhs.uk/every-mind-matters/coronavirus/tips-to-cope-with-anxiety-lockdown-lifting.

And remember, mind and body go hand in hand, see www.nhs.uk/better-health for lots of free tools and support to help you kick start your physical health too.

COVID-19 Vaccination Programme

Over the last five months we have vaccinated thousands of patients and are so grateful to all of our staff and local volunteers whose hard work, support and dedication has enabled us to help deliver the vaccine to our patients who are most at risk of COVID-19.

The vaccine programme has now entered Phase 2 which will focus on cohorts 10 – 12 (ages 18 – 49). Whilst we continue to provide second doses to our patients who

WILLINGHAM SURGERY NORMAL OPENING HOURS

Monday	8 30 – 1 00	2 30 – 6 00
Appointments	8 30 – 11 00	3 00 – 6 00
Tuesday	8 30 – 1 00	2 00 – 7 00
Appointments	8 30 – 11 00	4 30 – 7 00
Ante Natal/Baby Clinic		2 00 – 4 00
Wednesday	8 30 – 1 00	2 00 – 6 00
Appointments	8 30 – 11 00	3 00 – 5 30
Thursday	8 30 – 1 00	2 00 – 6 00
Appointments	8 30 – 11 00	3 00 – 5 00
Friday	8 30 – 1 00	2 00 – 6 00
Appointments	8 30 – 11 00	3 00 – 5 30
Emergencies		4 00 – 6 00

WILLINGHAM PHARMACY Tel: 01954 261787 NORMAL OPENING HOURS

Monday	8 30 – 1 00	2 30 – 6 00
Tuesday	8 30 – 1 00	2 00 – 7 00
Wednesday	8 30 – 1 00	2 00 – 6 00
Thursday	8 30 – 1 00	2 00 – 6 00
Friday	8 30 – 1 00	2 00 – 6 00

received their first dose through the practice, we have taken the decision to opt out of offering vaccination services for Phase 2 cohorts to enable us to focus on our day-to-day GP services.

Patients in cohorts 10 – 12 (ages 18 – 49) will be invited for their vaccine via a text or letter from the National Booking Service and will be able to book an appointment online via www.nhs.uk/covidvaccination or by calling 119 at one of the local Vaccination Centres, which includes Chesterton Bowls Club, Grafton Centre and Superdrug on Sidney Street in Cambridge, as well as centres in Huntingdon and Newmarket.

Any patient in cohort 1 – 9 who has not yet received their vaccine can still book online via www.nhs.uk/covidvaccination or by calling 119.

Whether you have had the vaccine or not, please continue to follow all the guidance in place to control the virus and save lives.

Further information on the COVID-19 vaccination programme, including frequently asked questions and patient information leaflets can be found at www.cambridgeshireandpeterboroughccg.nhs.uk/news-and-events/latest-news/covid-19-national-vaccination-programme/.

Farewell Dr Harding

At the end of May the practice said goodbye to Dr Harding, as he retired from General Practice. Dr Harding has been a very valued member of the team for the past two years and we wish him well in his retirement.

Lisa Smith
Assistant Practice Manager



WE'RE HIRING!
Contact us for permanent
or subcontract vacancies

**we've got your home
improvements covered**

PLUMBING & HEATING

- ▶ fit a new boiler ◀
- ▶ upgrade your heating system ◀
- ▶ annual service for your boiler ◀

BUILDING SERVICES

- ▶ bathroom & kitchen installation ◀
- ▶ new build ◀
- ▶ home renovation ◀

call us on: 01954 782920
or visit: www.ijcbuildingservices.co.uk



IJC is a family run Cambridgeshire business with over 30 years' experience.

We offer a comprehensive range of domestic and small commercial works across all forms of building, plumbing, heating and renewable services.

45 Viking Way, Bar Hill,
Cambridge, CB23 8EL

MOBILITY EQUIPMENT

**STAIRLIFTS, SCOOTERS, WHEELCHAIRS,
RISING CHAIRS, BEDS, WALKERS, TOILET &
BATHING AIDS, KITCHEN & HOUSEHOLD
AIDS, CONTINENCE CARE, CUSHIONS**

HOME VISITS AVAILABLE

**SCOTSDALES GARDEN
CENTRE,**

HORNINGSEA, CB25 9JG

Tel: 01223 863908

www.orchard-mobility.co.uk



Monday - Saturday 9.00-5.00

**Orchard
mobility centre**

**SME
funding
— UK —**

*Helping you to find the
right funding, right now.*

Do you need business finance?

Your local, independent specialist can help you to find the best deal to support your business and accelerate growth.

- Asset finance • Cashflow/Invoice finance
- Property finance • Unsecured loans

Trusted in the industry for over 30 years.

Authorised and regulated by the
Financial Conduct Authority - FRN 772970

For a free, no-obligation chat, contact us
today on 01223 848 844 or visit our website

www.smefunding.uk



Member of the National Association of Finance Brokers and registered with the Information Commissioner's Office (ZA209808) SME funding UK Ltd is a broker, not a lender and can introduce you to a number of finance providers based on your requirements and credit rating, we may receive a commission for such introductions. SME funding UK Ltd company number 10410655 registered in England.
Registered office: 14 Austin Friars, London, EC2N 2HE.

**YOUR HOME IS AT RISK IF YOU DO NOT KEEP UP REPAYMENTS ON
A MORTGAGE OR OTHER LOAN SECURED ON IT.**


**THE
HOUND DOG HOTEL**
Homely dog boarding in Willingham

Contact Mandy Booth

M: 07878561454

E: info@thehounddoghotel.co.uk

For more information and prices visit

www.thehounddoghotel.co.uk



**DOWN TO EARTH
ELECTRICAL LTD**

**info@down2electrics.co.uk
07709 084618**

A Willingham based company offering full electrical services



Beauty Specialist offering:

**All Face and Body Waxing | Tinting
LVL Lash Lift | Brow Lamination**



Based at in-home salon in Willingham, or mobile appointments available

www.cambridgebrowsandwaxing.com

01887 541659

[instagram.com/cambridgebrowsandwaxing](https://www.instagram.com/cambridgebrowsandwaxing)

FROM THE PARISH COUNCIL

www.WillinghamParishCouncil.gov.uk

Parish Council Election

Parish Councillors are elected for a term of four years, but this time the election was called a year early because of the change of boundary which made Willingham slightly larger after the incorporation of what was part of Longstanton. To keep future elections in synchronisation, the next election will be in five years' time in 2026.

There were only 11 nominations for the 15 seats on the Parish Council, so no vote was called, and all nominees were elected. We welcome back two former Councillors: Jamie Smith and Jo Pilsworth. The remaining positions can be filled by co-option but as there has just been an election, and unlike the case of casual vacancies arising mid-term, there is no immediate timescale to do this. Anybody who is interested can contact the Clerk for further details.

Several councillors decided not to stand, and I am extremely grateful to all those who have left for volunteering their time, effort, and skills for the benefit of the community, often with little thanks. In particular I wish to mention Ray Manning, whose knowledge of the village, experience of local government, generous support, and tireless work on our behalf will be sorely missed.

Annual Meeting of the Parish Council

The Annual Meeting of the Parish Council, which appoints the chair, vice chair and lead councillors, was held on 18 May. The Government legislation which permitted remote meetings has ended and will not be extended, so this was a physical meeting held with social distancing requirements in the Ploughman Hall.

School Run Parking – Mill Road

The parking restrictions on Thodays Close and Long Lane during school drop-off and collection are a welcome contribution to the safety of the children. However, can we please ask those who do still arrive by car to be considerate in their parking. We have had several complaints from the residents of Mill Road who have been unable to leave their houses or exit the road because of badly parked vehicles. As lockdown eases and more people return to work, please think of the access required when parking.

Flooding – Anglian Water Meeting

After the numerous flooding incidents over Christmas, the Parish Council arranged a multi-agency remote meeting with representatives from Anglian Water (AW), Cambridgeshire County Council (responsible for highways and flooding) and South Cambridgeshire District Council (SCDC), along with Willingham residents with experience of drainage and water supplies. A large team from AW attended. They detailed the unprecedented, sustained rainfall during the period which coincided with already saturated land and extremely high water tables. There was a blockage of the sewer on Church Street by The Green and a collapsed culvert by the Guided Busway. They have yet to establish the causes of the problems in Westfield and Bournays Manor Close/Covent Garden.

There were very many incidents across the region. Willingham has been put on their list of areas meriting a full investigation, which

is planned to take place between August 2021 and May 2022. There were several failings acknowledged: the slow, and initially misplaced, remedy of the Church Street blockage; the absence of a point of contact at the County Council and slow response of the Highways Department; the lack of communications with AW and AW's patchy historical records of the drainage system in Willingham. We now have contact details for AW and promises of better communications. The County Council will have better coverage during holidays. Some of our questions remain unanswered, particularly those regarding the capacity of the current foul and surface water drainage and its ability to deal with future deluges and future development; we continue to engage with AW to find these answers. Other answers will not be known until after the investigation.

Multi-Use Games Area (MUGA)

Our plans for the MUGA have been delayed by the exceptional weather this winter. The flooding in January would have destroyed the proposed surface and has made us think again about both the positioning and surfaces. We are continuing to work hard on this project.

Environment Issues

In conjunction with the WAG Sustainability Group, we are making progress with plans for the strip of wildflowers along the edge of the QEII Field but, as with many things, the key is good preparation which can take time. Progress with another joint project, tubs of flowers around the village, is faster and if the weather does finally warm up there will be a few around the village in June.

The Parish Council owns a small triangle of land about two miles to the north of the village, near the Old West River (the Great Ouse) where boats used to be unloaded. We are hoping that this can be included in our biodiversity plans and we have been in contact with the 'New Life on the Old West' project.

The deadline for applications for an SCDC Zero Carbon Communities Grant is fast approaching. Last year we were very successful, winning £13,000 towards low carbon heating of the Ploughman Hall (to be installed once we have the matching funding from the Glebe Field development), so we are thinking about something more modest this year, under one of the categories of: community buildings, biodiversity or that old favourite 'other'.

Council Office Details:

Ploughman Hall, West Fen Road, Willingham, CB24 5LP

Tel: 01954 261027 Email: clerk@willinghamparishcouncil.gov.uk

Opening hours: Monday – Thursday, 10 am – 1 pm (closed bank holidays)

Mrs Mandy Powell

Parish Clerk

D Law	Parish Council Chairman	cllr.law@willinghamparishcouncil.gov.uk	01954 202188
N Harris	Planning Committee Chairman	cllr.harris@willinghamparishcouncil.gov.uk	07792 611226
P King	Parish Council Vice Chair	cllr.pking@willinghamparishcouncil.gov.uk	01954 260780
L King	Leisure and Amenities – Lead Cllr	cllr.lking@willinghamparishcouncil.gov.uk	01954 260780
B Mansfield	Cemetery – Lead Cllr	cllr.mansfield@willinghamparishcouncil.gov.uk	01954 261540

Readers' Letters

A Post Election Farewell Message

I am still technically a County Councillor as I write this, but of course I will no longer be one by the time this edition comes out.

I am thrilled that the same party has both the City and the Combined Authority and hope they can work together for the good of all. The election of Darryl Preston as Police and Crime Commissioner has my wholehearted endorsement.

I wrote 'Summer Reading' pieces during August 2020, one every other day, in the expectation that they would be my swansong. These and my monthly reports are gathered at www.facebook.com/CottenhamRamptonWillingham. I have set out the credo by which I have done my bit to spread a little happiness by enabling people to make things happen.

One of my favourite epitaphs has in fact come from a Liberal Democrat Councillor: 'You brought a capacity for big picture thinking and political honesty which I very much appreciated – and from which the wider area greatly benefitted.' I can retire gracefully on that note, I think.

Having been unable to get out and about much over the past 12 months because of lockdowns and other restrictions, it has been a great pleasure to meet so many of you during the past few weeks. I put a lot of work into addressing the flooding incidents experienced over Christmas and New Year, and I did my best to get the roads and pavements fixed. The business case for a bypass doesn't stack up yet, but one day it will. My only regret is not being able to get the double yellow lines repainted opposite the Duke of Wellington in Church Street.

It has been an honour and a privilege for me to have been one of your elected representatives since 2017. I have enjoyed working with the Parish Council, and I thank all Parish Councillors, the team of Clerks, and those running the exemplary Willingham Love Hub in supporting people through the pandemic.

I wish Neil Gough well in taking care of Cottenham,

Rampton and Willingham for the next four years.

All that remains is for me to say – 'thank you and farewell'.

Tim Wotherspoon

Gift of Willingham Town Hall

Although I do not live in Willingham, from time to time I get to read *Willingham News*. Following the very interesting article regarding the Inns, Pubs and Ale Houses [in the April Edition], I would like to offer the following further piece of interesting local history –

The census of 1851 lists 10 Inns: Black Horse, Crown, Duke of Wellington, Five Bells, George, Vine, White Hart, White Horse, William 4th, Windmill.

William Crisp was described as Butcher and Publican in the census of 1851. He kept the Windmill Public House at the western end of Church Street. Frederic Crisp was his second son and was two years old in 1851. The Windmill Inn closed in about 1914.

In 1896, Frederick Crisp, then of Whitehouse Stud Farm, New Southgate, North London, gave £600 to build Willingham Town Hall, and instructed that it be handed over to the inhabitants of his native village FREE! Frederic Crisp, died in 1905.

As well as interests in land, he was a Shire Horse Breeder and Retail Draper. He became a Life Member of The Shire Horse Society in 1889 and was elected to The Shire Horse Society Council 1892.

Hopefully some of the above will have been of interest.

Ray Scott

Willingham Bowls Club

Community Scheme

If the Government's Plans go to schedule and restrictions are lifted on 21 June, then we plan to open our Community Scheme at 11 am on **Tuesday 22 June**. We will contact Over and Willingham Surgeries so they can advise some of their patients about this, but it is open to everyone.

The past year has been very hard for many people. If you have been depressed, lonely or feeling generally unfit, you are welcome to come to Willingham Bowls Club on **22 June** to try your hand at bowls or just come along for a chat and enjoy a cup of tea or coffee. We will supply all

equipment, the only stipulation, if you want to try bowls, is a pair of flat shoes, definitely no heels. Thanks to the generosity of our sponsors the Community Scheme is free.

Bowls is a gentle sport and gives light exercise but as previously mentioned, if you prefer, just come along for a chat. We are a friendly club and we welcome everyone. Our Club roll ups are on Sunday mornings and Wednesday afternoons and evenings.

If you need any further information, please contact Ian Bissett, our Secretary, at willinghambowlsclubsec@gmail.com, Terry Buckley on 07979 814969 or simply come down to see us at the Bowls Club.

District Councillors' Report

South Cambridgeshire District Council 5-Year Housing Land Supply

Local planning authorities, like the Council, must demonstrate that they are on track to deliver the minimum number of new homes (in the projected five-year period) that the national government has set. Widely known as the 5-year housing land supply (5YHLS) the failure to maintain one during the tenure of the previous administration led to developers bombarding the council with speculative applications, many of which got approved at appeal. We are delighted to be able to report that the 5YHLS figure for Greater Cambridge (South Cambridge and Cambridge City) has recently been reassessed and it now stands at 6.1 years. This means that we can apply our Local Plan policies for affordable housing, standards, sustainable locations, green belt and place-making without the fear of speculative and unsustainable development.

Greater Cambridge Local Plan Update

The work on this is now at the stage where a rough idea of overall strategy is beginning to take shape. The guiding principles are – to reduce climate impacts by ensuring that new developments are located where active and sustainable travel can be maximised, to make the best use of suitable brownfield land and existing transport infrastructure and to support rural communities to thrive. A further public consultation will be held later this year and we will raise awareness of it when it happens.

East West Rail (EWR)

The EWR project aims to deliver transport connections for communities between Oxford and Cambridge. It should connect communities between Oxford, Milton Keynes, Bedford and Cambridge, including building a station at Cambourne. It will be delivered in three connection stages, and it is anticipated that trains will be running the full length of the line by the end of the decade. The government is currently carrying out a non-statutory public consultation on this project which runs until **9 June** www.tinyurl.com/uu78mks2. This forms part of the pre-application public consultation needed to support a Development Consent Order (DCO) application, which is required to authorise its construction. EWR initially dismissed the idea of a route that

runs to the north of Cambridge, saying that such a route would be technically more problematic, far more expensive and with negligible benefits to residents because of the existence of the Guided Busway which already connects to Cambridge North Station. However, campaign groups, including residents opposed to a southerly route, have succeeded in getting the northern route back onto the agenda. Bearing this in mind, we suggest that Willingham residents look at the EWR website and consider whether they wish to have their say in the consultation.

COVID-19 Related Grants to Businesses and Discretionary/Hardship Grants

At the end of April, the Business Support Team at the Council had paid out over £11.7 million in total to 4,834 businesses since last November and £4.6 million in discretionary/hardship grants. They had also paid out over £2 million under the Business Restart Grants scheme (see next paragraph).

Council Grants Summary

Here is a summary of grants that are currently available from or through the Council at the time of publication of this edition of *Willingham News*:

- *Zero Carbon Communities Grants* – Funding of between £1,000 and £15,000 is available to parish councils and the voluntary sector for projects that support the shift to zero carbon emissions by 2050. The closing date is **30 July**. www.tinyurl.com/yp9pxewm
- *Business Restart Grants* – available to businesses involved in non-essential retail, hospitality, accommodation, leisure, personal care and gyms. The closing date is **30 June**. www.tinyurl.com/h69d6cwh
- *Tenant Community Grants* available to council tenant community projects, up to £1,000. www.tinyurl.com/khswpcty

Dawn Percival cllr.percival@scambs.gov.uk and 07948 683599

Bill Handley cllr.handley@scambs.gov.uk, 01954 200287 and [facebook.com/bill.handley.54540](https://www.facebook.com/bill.handley.54540)

County Councillor's Report

I am delighted to have been elected as the County Councillor representing Cottenham, Rampton and Willingham. I live in Cottenham but I have got to know the other villages well over the past two County campaigns. I know from my discussions with residents that your key concerns are the same - traffic (particularly the number of Heavy Commercial Vehicles and speeding on roads through the villages), poor public transportation, better community services and a focus on the environment. I will be working as a team with the District Councillors – Dawn Percival, Bill Handley and Eileen Wilson – and the Parishes to work on these issues.

This is a great place to live but there is more that needs to be done. Perhaps the one good thing that has come out of the COVID-19 pandemic is the recognition of the value of community. I think our villages have excelled in creating a sense of common purpose and interest. I will seek to build on that

to continue to help those who have been negatively impacted by the disruption of lockdown. I am particularly focused on those within our community who have been bereaved, become unemployed, become isolated or lost out on education and social opportunities. Life may be getting back to normal for many people but not for all, and I will be determined to make sure there is provision to help those who need it, especially our young people and the elderly.

Thank for your support and I look forward to working with you. I will work hard for you and our community to make it a better place in this next four years.

Please feel free to contact me with your thoughts, views and issues.

Neil Gough 07919 990299 neilgoughcrw@gmail.com



Andy Tibbett & Sons
Painting & Decorating

- * All internal & external work carried out to a high standard
- * Trade references can be supplied
- * Very competitive pricing
- * A prompt & polite service from a name you can trust

Telephone: 01954 230810
Mobile: 07717 493723 Email: andrewtibbett@hotmail.co.uk




ARTISAN LANDSCAPES
Est. 1988

www.artisanlandscape.co.uk

Paving, Fencing, Pergolas, Ponds, Pruning, Structures etc

jonathan_ashman@hotmail.com
07768 821354

 **Jonathan Ashman Artisan Landscapes**

A.R.Aspinall & Sons Ltd
Tel: 01954 234966 Fax: 01954 234967
Unit 11 Norman Way Ind Est, Over, Cambs, CB24 5QE.
www.araspinall.co.uk

WE STOCK A FANTASTIC RANGE OF NATURAL PAVING PRODUCTS COME AND VISIT OUR NEW DISPLAY AREA.

Bricks Concrete Blocks Lintels Cement Sand
Gravel Hardcore Timber Fixings Footwear
Decorating Supplies Industrial clothing Paving Slabs

Opening times: Mon to Fri 7.30am – 5pm



WE OFFER A FREE LOCAL DELIVERY SERVICE!

Buttercups
CHILDCARE LTD

Bar Hill Day Nursery

Provision for children aged 4 months to 5 years.
Ofsted Rated Good.

Working towards accreditation with The Curiosity Approach.
For enquiries, contact info@buttercupchildcareltd.co.uk
www.buttercupchildcareltd.co.uk



David Wake
Carpentry and Joinery

- Fitted Kitchens • Specialised Joinery
- Doors and windows • Property repairs

Office: 01954 260678 Mobile: 07836 290112

THIS MAGAZINE WAS PRINTED BY

 **Target Print Ltd**
DIGITAL AND LITHO PRINTING



Quality printing
to fit your budget

Newsletters • Brochures • Flyers • Letterheads • Compliment Slips • Menus
NCR/Carbonless Sets & Pads • Manuals • Business Cards • Postcards • Labels
Booklets • Posters • Roller Banners • Envelopes • Wedding Stationery
Continuous Stationery • Invitations • Folders • and much more ...

Broad Lane, Cottenham, Cambridge CB24 8SW
Telephone: **01954 251189**
Email: print@targetprint.org
Web: www.targetprint.org

Ward Solutions Ltd

We specialise in the installation of flue lining systems, wood burner's and fireplaces, 15 years experience.

We can supply you with a stove or install one supplied by you.

Other services include- chimney re pointing, smoke tests, And fitting pots and cowls.

HETAS registered

Call or email for a free survey

0800 357 92 91
01954 200 021
info@wardsolutions.co.uk






ACA
Heating & Plumbing

46 Church St
Willingham
Cambridge
CB24 5HT

Gas and oil boiler servicing, breakdowns
Boiler upgrades and heating installations
Bathroom and Wetroom installations
Un-vented cylinder installations/servicing
All types of plumbing and heating works undertaken
Local friendly services with over 14 years experience




Andrew Leahy mobile: 07833 204499
Email: andy@acaplumbing.co.uk
www.acaplumbing.co.uk

Willingham Women's Institute



Our next meeting will be via Zoom at 7 30 pm on **Monday 14 June** when Carole Pook will be speaking about *The Teenage Rebel Who Wrote Frankenstein*.

When restrictions allow, we will consider re-starting the walking groups and we have our fingers crossed that we might all be able to get together in person again for our Summer Party in July.

Our Zoom session in April on *Victorian Etiquette and the Language of the Fan* was very enjoyable. David Allen enrolled us all at Mr Hugo Bottomley-Smythe's Finishing School where we practised walking with a book on our heads for good posture and how to sit in a crinoline, alighting like a butterfly. We prepared ourselves for courtship by treating our skin with arsenic preparations and Dr Mountebank's facial lotion and made our 'morning' calls from 3 pm onwards.

Tea was to be drunk after stirring with a spoon moving in a straight line away and towards, never in a circular fashion and no sticking out your little finger! At dinner, the gentleman passed food to the ladies who were to eat slowly, taking tiny portions. Wearing a corset made this easy to comply with! Plates were removed when the hostess finished her meal, regardless of whether anyone else had. Conversation was to be polite, with no discussion of serious subjects. We were taught to laugh only a little if we had good teeth, parading them may be seen as showing off, but if we had bad teeth, we were not to laugh at all. Suitors could be made aware of your intentions by tapping your closed fan on your right cheek, meaning 'yes' or on your left ear to mean 'go away'. Once engaged to be married, you could hold hands and take chaperoned walks and carriage rides.

We thanked Mr Bottomley-Smythe for our edification and felt heartily thankful that times have changed!

Zoom continues to work really well for us and we had 25 members taking part in our last meeting. After the talk we split into smaller groups to make it easier to have a chat and this made a nice end to the evening.

If you are a member and would like to participate but are unsure about using Zoom, please contact us by email or give Jane a ring on 01954 202069. Normally we meet on the second Monday of the month at 7 30 pm in the Social Club. If you would like to join us, please email and we will keep you up to date. Our WI is large and friendly. It's a great way for women in the village to socialise and get to know new people. Why not give it a try?

Contact email: willinghamwi28@gmail.com.

Willingham Social Club



Welcome Back!

As restrictions are slowly being lifted, we have organised a few events which will initially be for our members only. New applications are welcome at just £15 for the year. To apply download a form from www.willinghamsocialclub.com or call in during opening hours. Applications are approved at monthly meetings.

On **Friday 11 June** at 8 pm. Graham Buxton is back. One of our favourite and most talented professional singer/musicians, Graham has a huge repertoire of covers and is quite simply the nicest gent.



This is an indoor seated event. Please book a table in the Members Bar for this evening to guarantee entry. Free to members only, sorry no guests or children.

Every Wednesday is cash Bingo Night in the Function Room. Doors open at 6 30 pm for 7 30 pm eyes down. The more players the bigger the prizes. Raffle and extra games will be available to play too. Everyone is welcome and government guidelines for COVID-19 safety will be followed.

For updates of club poker nights please see Facebook or enquire at the Club.

Dates For Your Diary.

- Saturday 17 July** Members only music quiz.
- Saturday 11 September** Jax and Co, the return of the incredible Johnny Cash Tribute Band.
- Friday 31 December** New Year's Eve Party – Live Band to be announced later.

Finally, we would like to say a huge 'Thank you' to the volunteers who have refurbished the Function Room during the second Lockdown under the guidance and hard work of our steward Lynne. After the Members Bar refurbishment last year, we are incredibly grateful to a different team who have worked tirelessly on the second room. As a not-for-profit organization who support many community groups this help is invaluable to keep costs to a minimum.

We hope you love it!

Sudoku Answer

6	7	2	9	3	8	4	1	5
1	5	3	4	6	2	9	8	7
9	8	4	5	1	7	6	3	2
5	4	1	2	7	6	8	9	3
8	3	9	1	5	4	7	2	6
2	6	7	3	8	9	5	4	1
4	1	5	7	9	3	2	6	8
3	9	8	6	2	5	1	7	4
7	2	6	8	4	1	3	5	9

Book Quiz Answers:

- 1 Harriet Beecher Stowe,
- 2 Daphne Du Maurier,
- 3 Kate Moss,
- 4 D H Lawrence,
- 5 Jodie Picoult,
- 6 Jacqueline Wilson,
- 7 David Walliams,
- 8 Anton Chekhov,
9. Audrey Niffenegger,
- 10 G K Chesterton.

CAMBRIDGESHIRE BATHROOMS

Dream - DESIGN - ACHIEVE

- Premium Brands
- 3D Bathroom Design Service
- 2 Extensive Showrooms
- Technical Advice Throughout
- In House Delivery Team

Unit 1
Willow Road
The Lakes Business Park
Fenstanton
Cambridgeshire
PE28 9RB

01480 598 750

Mon - Sat - 9am to 5pm
cambridgeshirebathrooms.co.uk



3D Bathroom
DESIGN
Service



R. A. Miller Plumbing and Domestic Heating

Fenside, 71 Willingham Road, Over

Cambridge CB24 5PE

Tel: 01954 203277 Mob: 07831 853885

Email: robert.miller@btworld.com

All plumbing work undertaken

- New boiler replacement and installation with free quotation
- GAS boiler and GAS fire servicing - Landlord Certificates
- Heating problems - Diagnosis and rectification
- General plumbing - taps, washers, pipe work, showers, etc.
- Full and partial Bathroom installation work

For a reliable and professional local service

Robert Miller

Office 01954 203277

Mobile 07831 853885



Willingham Post Office

15 High Street, Willingham CB24 5ES

01954 260331

Mon - Fri 08:30 - 18:00 Sat 08:30 - 15:30

- All mail services, including special delivery
- Travel Currency, Travel Money Cards, Travel Insurance and MoneyGram
- Passport Photographs, Passport Check and Send Service
- Document Certification Service
- International Driving Permits
- Vehicle Tax and Bill payments
- Financial Products - Insurance, ISA, Growth Bonds, Credit Cards and much more
- Broad Band and Phone Packages, Phone Top-Ups
- Free Cash withdrawals for most major Banks as well as Cash & Cheque Deposits
- Photocopying and Laminating Service
- Great range of Greeting Cards, Stationery and Pack & Post Items



AJ Carpentry

Domestic & Commercial Carpentry & Building Services



Your local, family run business specialising in transforming project dreams into reality!

Extensions - Refurbishments - Conversions -
Kitchens - Flooring - Electrical work - Bespoke
furniture - AND SO MUCH MORE!

07989 341724



01954 202267

www.ajcarpentry.co.uk

Highgate Country Stores Ltd



Over Road, Willingham, Cambridge, CB24 5EU

- High Quality Pet Food and Accessories
- Poultry and Farm Animal Feed and Equipment
- Horse Feed, Equipment and Bedding
- Riding Accessories
- Fuel - Flo Gas, Logs, Kindling and Coal



Open 7 Days a week

www.highgatecountrystore.co.uk Telephone: 01954 260798

info@highgatecountrystore.co.uk

Highgate Butchers



We sell locally sourced quality meat and poultry enhanced by a wealth of butchery experience from our friendly and knowledgeable staff.

Come and see for yourself our great range of beef, Lamb, Pork, Poultry and Game products, not forgetting our 28 day aged beef.

Opening times: Mon: Closed / Tue-Sat: 8-5.30 / Sun: 9-2
Tel: 01954 260444 highgatebutchers@gmail.com

ON THIS DAY IN JUNE

1 June	The Driving Test became compulsory in 1935. Around 246,000 candidates applied and the pass rate was 63%.
2 June	In 1953, Queen Elizabeth II's coronation, the first to be televised, was watched by 27 million people.
3 June	The British farce, <i>No Sex Please, We're British</i> , premiered in the West End in 1971. It played until 1987.
4 June	Suffragette, Emily Davison, died after running in front of the King's horse at the Epsom Derby in 1913.
5 June	In 1661, Isaac Newton was admitted to Trinity College, Cambridge. He became a Fellow in 1667.
6 June	The YMCA, the world's oldest and largest youth charity, was founded in 1844 by Sir George Williams.
7 June	The Vatican City became a sovereign state in 1929. It's the smallest country in the world.
8 June	In 1967, Procul Harum's <i>A Whiter Shade of Pale</i> went to No 1 and remained there for six weeks.
9 June	Donald Duck appeared for the first time in Walt Disney's cartoon <i>The Wise Little Hen</i> in 1934.
10 June	In 1909, the SOS signal was used in an emergency for the first time by the SS Slavonia in the Azores.
11 June	Margaret Thatcher won an historic third term as Prime Minister in 1987, the first to do so in 160 years.
12 June	Anne Frank received a diary for her 13 th birthday in 1942. Three weeks later her family went into hiding.
13 June	The first European Football Cup Final was played in Paris in 1956 in front of 38,000 fans.
14 June	In 1982, Argentina surrendered to Great Britain ending the 74 day Falkland Island conflict; 907 lives were lost.
15 June	<i>The Magna Carta</i> was signed by King John in 1215. This was a turning point in human rights for everyone.
16 June	Comic actor, Stan Laurel, was born in Lancashire in 1890. He appeared over 100 films with Oliver Hardy.
17 June	In 1885, the Statue of Liberty arrived in 214 crates in New York Harbour, a gift of friendship from France.
18 June	David Tennant made his first appearance as the 10 th Doctor Who in 2005.
19 June	In 1829, the Metropolitan Police Act was passed establishing a paid, uniformed police force for London.
20 June	The film <i>Jaws</i> is released in the USA in 1975, it became the highest grossing film of that time.
21 June	In 1675, Sir Christopher Wren laid the first stone of St Paul's Cathedral. It was completed in 1711.
22 June	John McEnroe's <i>You Cannot Be Serious</i> outburst was in 1981, Maradona scored his <i>Hand of God</i> goal in 1986.
23 June	In 2016, Great Britain voted to leave the European Union by 52% to 48%.
24 June	Picasso, aged just 19 years old, had his first formal art exhibition in Paris in 1901.
25 June	Born today: 1900 – Lord Mountbatten, 1903 – George Orwell, 1945 – Carly Simon, 1963 – George Michael.
26 June	According to folklore, the Pied Piper lured 130 children of Hamelin into a mountain cave in 1284.
27 June	The first ATM was inaugurated by comic actor, Reg Varney, in a Barclays Bank branch in Enfield in 1967.
28 June	In 1939, Pan American flew the first transatlantic passenger service from New York to Marseille.
29 June	London's Globe Theatre burned down in 1613 when a canon was fired during a performance of <i>Henry VIII</i> .
30 June	The world's first emergency call telephone service was launched in London in 1937 using the number 999.



Our salon offers all aspects of hairdressing including wedding hair with a personal touch. We can come to you on your special day.

Tel: 01954 260224

EDGAR FARRELL

CONSTRUCTION

WWW.EDGARFARRELL.CO.UK

**NEW BUILDS/ EXTENSIONS/ CONVERSIONS
BATHROOM & KITCHEN FITTING**

EDGARFARRELL2@YAHOO.CO.UK 07919800895



Home & Garden Handyman Services

- ❖ QUALITY, insured workmanship at very competitive pricing.
- ❖ Internal and external works undertaken. No job is too small.
- ❖ Experience with vulnerable people.
- ❖ ENHANCED DBS security checked.
- ❖ Discount schemes offered.

Reliable.

Honest.

Local.

Friendly

M: 07562 212056 T: 01487 842968

E: hello@epshomeworks.co.uk

W: epshomeworks.co.uk

Becky's Fitness

Becky's Fitness on Facebook – drop me a message to find out more.

All Classes being held on-line Via Facebook Live, up to 10 classes per week for Just £20 per month.

Classes include Fitness Pilates, HiIT, Aerobics, Body conditioning & Cardio Dance

07905097961
becky@beckysfitness.co.uk
FIRST WEEK FREE



LETTINGS & PROPERTY MANAGEMENT

Tel: 01954 260200 e-mail: enquiries@cpbm.co.uk

Website : www.cambspropertybureau.co.uk

BLUE HOUSE Computer Help

SPEED UP, FIX UP, OR UPGRADE YOUR PC

COVID FRIENDLY
MOST WORK CAN BE CARRIED OUT REMOTELY

SOME OF OUR SERVICES:
Getting broken computers up and running, even when Windows won't start
Upgrades for extra speed and space
Transfer your apps and files to a new PC
Networking and WiFi dead spots
Sync files between devices
Virus and malware clean-up

SAVE MONEY
• GAIN SPEED
• IF IT RUNS LIKE TRECLE, DON'T THROW IT OUT.
Take advantage of our computer optimisation and upgrade services.

LOAN OF A LAPTOP FOR BIGGER JOBS

PROFESSIONAL INDEMNITY AND PUBLIC LIABILITY INSURANCE
REPAIRS COME WITH A 100 DAY GUARANTEE

We love keeping your old computers in service and out of landfill. In fact, we can make them work even better than when they were brand new

WANT SOME HELP?
CALL 01223 85 30 20
hello@bluehouse.help | www.bluehouse.help
 Find us on Facebook
BLUE HOUSE COMPUTER HELP, CAMBRIDGE ROAD, OAKINGTON

Kirsty Cornwell Coaching

NLP Practitioner, Ollie Coach and Hypnotherapist

Helping children and adults to manage their emotions
Contact for services and appointments available

www.kirstycornwellcoaching.co.uk

The Coaching Cabin, 59 Church Street, Willingham, Cambridge CB34 5HG

Mobile: 07990610517

Email: kirstycornwell6@gmail.com



JASON KIRBY

Professional Painting
& Decorating Ltd

A Professional Service
from Start to Finish

Tel: 01954 211775

www.jasonkirbyltd.co.uk



Stay safe,

observe social distancing and
wash hands regularly



The Complete Gas Heating and Plumbing Company

Plumbing • Heating • Gas • Bathrooms
Water Softeners • Property Maintenance

Tel: 01954 204044 • Web: www.entiregroup.co.uk
Email: service@entiregroup.co.uk

HOME HELP for SENIOR CITIZENS

Do you know someone in need of some Help at Home?

* Cleaning * Meal preparation * Company * Errands
* Ironing * Bed Changing * Laundry

Same Home Help – Same Time – Same Day

*All Staff are DBS checked, trained and reference
checked*

Call for more information on 01480 383340

The Home Help Company



elglaze *Your home. Our heritage.*
est. 1983

Windows - Doors - Conservatories & more



Casement
Windows



Composite
Doors



Bespoke
Conservatories



Sash
Windows

QUICK ESTIMATE



www.elglaze.co.uk/estimate

01954 770770 | www.elglaze.co.uk

FENSA MTC REGISTERED



Willingham Mini Skips
Mini Digger Hire (with driver)

We provide a quality service at
competitive prices to meet
your personal requirements

For further information telephone
01954 261119 or 07774 197960

YOUR PERSONAL WEALTH.
OUR PERSONAL RESPONSIBILITY.

At Tilney, we have been helping clients achieve their financial goals for more than 180 years. Whether you are saving for retirement, want to pass on your wealth or would like to have your investments managed by an expert, we can do the same for you.

To find out how we can help you, please call our Cambridge office on 01223 452 840 or email neil.trickett@tilney.co.uk for Investment Management or laura.ingram@tilney.co.uk for Financial Planning.

Investments carry risk –
investors can lose money investing.
tilney.co.uk


TILNEY
PLANNING | ADVISING | INVESTING

VILLAGE DIRECTORY

Please notify *Willingham News* of any changes

Council and Community	Parish Council (<i>See full details on page 14</i>)		01954 261027
	County Councillor	Neil Gough	07919 990299 / neilgoughcrw@gmail.com
	District Councillor	Dawn Percival	07948 683599 / cllr.percival@scambs.gov.uk
	District Councillor	Bill Handley	01954 200287 / cllr.handley@scambs.gov.uk
	Willingham Community Planning Group	Chris Thornhill	07529 222579 / Communityplanning@willinghamlife.org
Services	Police		101
	Surgery		01954 260230
	Dispensary for repeat prescription requests		01954 207602
	Library		0345 045 5225
	Pharmacy		01954 261787
	Over Surgery		01954 231550
	Urgent Care Cambridgeshire		111
Schools	Community Warden	Joanne Twinn	wardens@ageukcap.org.uk 07812 496002
	Primary School	Mr Dave Morel	01954 283030
	Willingham Out Of School Club (3–6 pm only)	Mrs M Lenk	01954 283033
	School Governors Chairperson	Katy Stevenson	chair@willingham.cambs.sch.uk
	School Association	c/o school	01954 283030
Children	British School Trust	Ray Croucher	01954 261113
	Beavers, Cubs and Scouts	Matt Haigh	adventure@1stwillinghamscoutgroup.org.uk
	Honeypot Pre-School (term-time only)	Mrs Kate Van Dort	01954 201567
	Koala Kidz	Mrs Edith Jeffrey	01954 260046
	Guides and Rangers	Lynn McGoff	willinghamguides@hotmail.co.uk
	First Steps	Vicky Page	vickypage85@gmail.com
	TOPS (Baptist Church Toddlers Group)	Katy Gilbert	01954 261922
	Little Notes Music Group (0-4 years)	Lisa Adcock	07949 062360
Halls	KFC Kid's Friday Club Years 1-6 (Baptist Church)	Lorriane Bald	01954 261189
	Ploughman Hall Bookings	through Parish Council	01954 261027
	Wilford Furlong Centre		01954 261445
	The Octagon		admin@5folds.org.uk
	Baptist Bookings and Rentals	Emma Launchbury	01954 263108
	Willingham Social Club Bookings	Lynne Sadler	01954 260557 / willinghamsocialclub@gmail.com
	Willingham Youth Centre bookings		enquiries@willinghamyouthtrust.org
Local Representatives	Allotments	Sue Ayling	01954 260718
	Billavincea Lodge 8719	Mr M Scrivener	01480 413533
	Fen Edge Community Association	Eileen Wilson	chair@fenedge.co.uk
	Over & District Royal British Legion	Jane Matthews	07983 630265 / overanddistrictrbl@yahoo.com
	OWLS Community Car Scheme	Lorraine Hunt	07505 254363
	Willingham Action Group (WAG)	Mike Tidball	01954 260647
	Willingham Combined Charities	Kassia Bunnett	07969 541095 / k.bunnett@googlemail.com
	Willingham RBL Poppy Appeal Organiser	Graham Atherton	01954 260331
	Willingham Bee Group Chairman	Steve Smith	07795 215071
Clubs	Friends of Willingham Library (FOWL)		willinghamlibraryfriends@gmail.com
	Gardening Club	Mrs C Bailey	01954 260794
	WBC Youth Club (Baptist Church Years 7-9)	Bev Thomas	01954 789230
	Willingham Dance Club	Teresa Weston	willinghamdanceclub@gmail.com
	Willingham Social Club	Lynne Sadler	01954 260557 / willinghamsocialclub@gmail.com
	Willingham Jam Club	Julian Eales	01954 201818
	Willingham Photography Club	Steve Harding	07595 668161
	Willingham Running Club	Monica Garcia	gcompass.monica@gmail.com
	Willingham Youth Club	Jack Stinton	07960 615898
	Women's Institute	Wendy Law	01954 202188
Sport	Angling	Colin Dodd	07773 719330
	Badminton	Emma Byrom	01954 202481
	Bowls Club	Ian Bissett (Sec)	ianbissett@gmail.com
			Willinghambowlsclubsec@gmail.com
	Cricket Club	Mr R Ambrose	01954 610113
	Cycling Club – www.willinghamwheels.com	Paul Knighton	07787 530394
	Ladies' Hockey	Teresa Hutchcraft	01954 260177
	Tennis Club	John Graham	01954 231968
	Willingham Diamonds Netball Club	Emma Byrom	01954 202481
	Willingham Sports Pavilion	through Parish Council	01954 261027
	Willingham Wolves (Boys & Girls Football)	Jamie Smith (Sec)	01954 261141
Churches	Mothers' Union	Mrs Sue Hayden	01954 260363
	Baptist Church	Emma Launchbury	01954 260538
	Methodists (Ministerial Contact)	Rev Simon Oliver	07554 202929
	Roman Catholic Priest	Rev Thomas J Walton	01480 462192
	Parish Church	Simon Gill	01954 230434 / admin@5folds.org.uk

Paying too much tax?
Paperwork a burden?
Accounts fee expensive?
Like a business review?

At **Uttridge Accounting** we understand your business and tax needs and provide a range of services to meet your requirements, including:

- Accounts Preparation
- Self Assessment
- Taxation Advice
- Business Start-ups
- Business Planning
- Payroll Services
- Online Accounting

For professional accounting expertise, attentive personal service and great value for money, contact us today.

UA Uttridge
ACCOUNTING
Chartered Certified Accountants

ACCA

01954 263000

info@uttridge-accounting.co.uk
www.uttridge-accounting.co.uk

Selling or Letting your Willingham home for the best price takes experience, skill and commitment.



...four office coverage helps, too!

Ensure your home gets the coverage it deserves.

Call Tylers.

01223 214400
hello@tylers.net
tylers.net



SPECIALISING IN THE
SALE OF HOMES IN
WILLINGHAM AND THE
SURROUNDING VILLAGES

HOCKEYS
ESTABLISHED 1885



Vintage
travel

ESTABLISHED
1990

Your Local
Travel
Company



HANDPICKED
VILLAS WITH POOLS

A selection of beautiful individual villas & houses with pools in tranquil settings & areas of traditional local culture.

Call for a brochure or to speak to one of our specialists **01954 261431**

or visit our website
vintagegetravel.co.uk

GREECE • SPAIN • LANZAROTE • BALEARICS • PORTUGAL
TURKEY • FRANCE • ITALY • CROATIA • CYPRUS

