

Willingham News

FREE TO EVERY HOME

village website: www.willinghamlife.org

willinghamnews@gmail.com

May 2021



Cowslips in the Community Orchard

Photo by Francis Pullen

Stamp Chiropody & Podiatry



Casey Stamp MCPod BSc (Hons)
HCPC registered CH15068

- General chiropody – nails, hard skin & corns
- Diabetic foot care
- Children's Feet – Growing pains, Verrucas, etc.
- Sporty Feet & associated injuries + pains
- Ingrowing toe nails
- Custom made Orthotics/Insoles
- Dancing feet – we'll keep you on your toes
- Biomechanics & Gait analysis

New Clients Always Welcome.

Find us at:

Willingham Medical Practice,
52 Long Lane, Willingham,
Cambridge, CB24 5LB

Tel: 01480 464507 or 07807505534

Also available at:

Salus Wellness Clinics
47 Norfolk St

Cambridge CB1 2LD

Tel: 07807 505534

www.stamppodiatry.co.uk

English Rose
BEAUTY HOUSE

BEAUTY • SPA TREATMENTS • RELAXATION

Specialists in Shellac Nails, Bio Sculpture Nails, Manicures & Pedicures, Spray Tanning, Hair Removal, Eyelash Extensions, Facials, HD Brows, Waxing, Tinting, Make-up and Massage.

16 Berrycroft, Willingham, Cambridge CB24 5JX

Tel: 01954 261176 Email: info@englishrosebeautyhouse.co.uk

www.englishrosebeautyhouse.co.uk



WILLINGHAM MOTORS LTD

YOUR LOCAL INDEPENDENT GARAGE FOR ALL SERVICING/REPAIR REQUIREMENTS, MOT TESTING, AIR CONDITIONING, DIAGNOSTIC SOFTWARE, EXHAUSTS, TYRES

CAR SALES – P/X WELCOME CAR/VAN STOCK LOCATOR

QUALITY VEHICLES BOUGHT FOR CASH FREE COURTESY CARS

Tel: 01954 260467/206566 E-mail: willinghammotors@aol.com www.willinghammotors.co.uk

WILLFLOWER FLORISTS

134 Rampton Road

WILLINGHAM

Tel: 01954 260 831



Fresh Cut Flowers, Bouquets, Wreaths, Wedding Flowers and Arrangements

THE PLOUGHMAN HALL WEST FEN ROAD, WILLINGHAM

Book Willingham's village hall for your

Wedding Reception

Birthday Party

Private Function

Play or Musical Event

Club or Society Meeting

The Ploughman Hall

Offers:

A large hall

Bar facilities (subject to licence)

A fully equipped kitchen

Disabled friendly facilities

Ample off-road parking

Check out our competitive hire charges and make your booking at the Parish Office (01954 261027)

The Ploughman Hall – Willingham's village hall

O'MALLEY SOLICITORS

Family Law Specialists

Divorce • Matrimonial Property & Finances • Co-habitation Disputes Children Matters • Prenuptial Agreements.

With over 16 years' experience, we take a sympathetic and sensitive approach to Marriage and Family breakdowns.

Contact us on **01954 202075**.

O'MALLEY SOLICITORS

84 Rampton Road, Willingham, Cambridge, CB24 5JQ

Tel: 01954 202075 E-mail: omalleyssolicitors@googlemail.com

Authorised and Regulated by the Solicitors Regulation Authority

SRA No: 318339



www.bushelboxfarmshop.co.uk

01954 206015

Local Fruit, Vegetables, Eggs, Preserves & more

Open Tues - Fri 10 - 6 and Sat until 4

130 Station Rd Willingham CB24 5HG



Camb's Oven
Cleaning

Revive Your Oven,

Contact Ian Morley on **07584 684853**



Willingham News is a subsidiary of Willingham News Ltd and is edited by volunteers. We do our best to ensure the accuracy of the content of the submissions, but this cannot be guaranteed. We reserve the right to edit or omit articles at our discretion. The views expressed in readers' letters are not necessarily those of the editorial team. Send your contributions to **willinghamnews@gmail.com** as an email attachment of up to 250 words (no pdfs) to arrive before the monthly deadline. The Editorial Team comprises Liz Cosford, Jane Dowle, Wendy Law, Frances Watts, James Watts and Trevor Weston.

The **deadline for your contributions is the 8th of each month**. As the library still has restricted opening, hard copy can be dropped off at 15 Balland Field.

Bin Collections – Friday except where indicated.

Saturday 8 May	Black
14 May	Blue and Green
21 May	Black
28 May	Blue and Green

To contact local police, phone 101 or email:
SCambsCops@cambs.pnn.police.uk

PLEASE NOTE:

Back issues of *Willingham News* from October 2005 to the present (with the exception of March 2006) are now available on the Willingham Life website run by WAG:
www.willinghamlife.org/page/willingham-magazine-back-issues

Advertising

We would like to thank all our advertisers for their continued support during these difficult times. It's due to them that *Willingham News* is able to serve the village. Please continue to support our local businesses now and in the future when restrictions are lifted.

Advertising is sold on an annual basis for an insert into 12 issues beginning in January. Send any advertising queries or copy to: **advertising.wnews@yahoo.co.uk**, marking your e-mails Adverts. The *Willingham News* team wishes to thank all the advertisers for their support and interest. They play a vital role in maintaining this publication and also in our community as local businesses supplying goods and services. If you contact an advertiser, please mention that you saw their advertisement in *Willingham News*. Thank you all very much.

CONTENTS

May News

Aldreth Causeway – A Historical Walk	15
Brief History of Willingham – Part 25	9
County Councillor's Report.....	18
District Councillors' Report.....	18
Fen Gallop	21
Happy Birthday, OWLS!	5
Infringement of Bread Order.....	15
Old Willingham.....	6
Poem for May.....	5
Primary School Celebrates Red Nose Day	10
Readers' Letters.....	7
Reading Group Book Review	6
Rosie in Stitches.....	10
Update from Fen Drayton Lakes.....	16
Willingham British School Trust.....	10
Willingham Community Plan	5

Clubs and Groups

Bowls Club.....	6
Gardening Club.....	16
Photography Club.....	12
Social Club	15
Willingham Rangers	10
Women's Institute	5

Quizzes

Book Quiz	8
General Knowledge Crossword	8
Young Readers' Corner	8
Answers.....	15

Monthly items

Bin Collections	3
Christians Together.....	11
Directory.....	23
Library	6
Medical Practice	12
On This Day in May.....	20
Parish Council.....	9
Thought for the Month.....	11

ALAN'S CARPETS

Carpets and Vinyl Supplied and Fitted
We have been in the carpet trade for over 47! years

Samples to your home, Measure, Quote
Express delivery and fitting included

Phone 07790 681317 or 07790 544250

SUTTON TREE SERVICES

- HEDGE MAINTENANCE
- TREE REMOVAL, FELLING & REDUCTIONS
- GENERAL PRUNING
- STUMP REMOVAL
- FULLY INSURED
- NPTC QUALIFIED

Please call to discuss your requirements or to arrange a free quote.
Paul Young 07765 223 692 or 01353 775 076



Cottenham Computers

01954 593025

Call the experts for good honest advice



We will come to your home or business to fix your computer

Got any of these issues?

- ✓ Computer crashing
- ✓ Network Wi-Fi connection Issues
- ✓ Computer infected with viruses
- ✓ Windows won't boot
- ✓ Can't access your email
- ✓ Can't access the Internet
- ✓ Computer running very slow

With over 16 years experience it is likely we have seen your problem before. We are happy to advise you free over the phone..

We don't charge a fortune
So give us a call TODAY! We won't bite!

Working all day? Then we can collect and deliver FREE to and from your work place*

* Within 10 Miles of Willingham

We cover Willingham & surrounding towns & villages

For all computer related problems give us a ring!



www.cottenhamcomputers.co.uk



Karen BEAUTICIAN

DAYTIME & EVENING APPOINTMENTS

95 Rampton Road
Willingham
Cambridge CB24 5JQ

Tel: 01954 260375
Email: karendench@hotmail.com
www.karenbeautician.co.uk



ARK FACIALS
SHELLAC/OPI
MANICURES
AND PEDICURES
ST. TROPEZ
SPRAY TAN
AROMATHERAPY
MASSAGE
TINTING
HOPI EAR
CANDLES
EAR PIERCING
MAKEUP

MARK BIRD
ELECTRICAL
SERVICES

Mark Bird

Electrical contractor
NICEIC Domestic Installer
Part P Approved
Tel: 01480 493008
Mobile: 07961 505189
Email: mbird494@btinternet.com



CHIMNEY SWEEP

J. L. Wight

Guild of Master Sweeps, Certificates issued
Advice given/problems solved

01954 253315

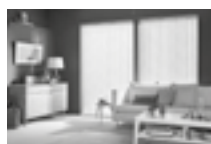
www.camsweep.co.uk

9 Cow Lane, Rampton



J&G Blinds Ltd

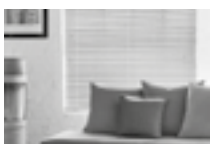
Conservatory & Window Blinds



Vertical Blinds



Roller Blinds



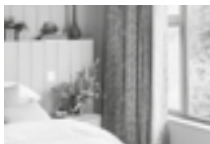
Venetian Blinds



Roman Blinds



Shutters



Soft Furnishings



Conservatory
Blinds



Perfect Fit
Venetian Blinds



Fly Screens

Tel: 01954 261149

Email: jandgblinds@aol.com

Universal Fencing Co Ltd

Established
30 Years

Tel: 01954 230860

mob: 07786012990

www.universalfencing.co.uk

SUPPLY ONLY OR SUPPLY AND ERECT
FREE ESTIMATE



Palisade



Featheredge



Field Gates



Security Fencing

8 Arthur Court Norman Way, Over, Cambridge, CB24 5AL

Open: MON-FRI 7.30 - 5pm

Commercial, agricultural, industrial & domestic fencing contractors



Church End Carpet & Vinyl Centre

We are a family run business, established in Cottenham in January 1982

We offer a comprehensive range of quality carpets, vinyls and laminate flooring at highly competitive prices with a great service and fitting.

76 High Street
Cottenham
Cambridge
CB24 8SD

Email: sales@churchendcarpets.co.uk
Tel: 01954 250287
www.churchendcarpets.co.uk

Open: Monday, Tuesday, Wednesday, Friday: 10:00 - 18:00
Saturday: 10:00 - 17:00

Willingham Women's Institute



Our next meeting will be a *Face Yoga Workshop* with Polina Rumsey via Zoom on **Monday 10 May**.

When restrictions allow, we hope to restart the walking groups and get together in person again for our Summer Party in July.

Our Zoom session for the meeting and quiz in March was very enjoyable. We had 18 members plus our quizmaster Jess, who we heartily thank for providing such a fun quiz and handling the technicalities of splitting us into teams and managing the 'breakout rooms'. The winners were the Zoomettes.

Zoom continues to work really well for us, and we've all enjoyed 'seeing' and chatting with the group. If you are a member and would like to participate but are unsure about using Zoom, please email or give Jane a ring on 01954 202069. Normally, we meet on the second Monday of the month at 7.30 pm in the Social Club. If you would like to join us, please email and we will keep you up to date. Our WI is large and friendly and a great way for women in the village to socialise and get to know new people. Why not give it a try? Contact email: willinghamwi28@gmail.com.

Willingham Community Plan

Get Ready To Have Your Say!

This last year has been exceptionally difficult, and many of us have spent a lot more time at home. It's been a great opportunity to think about life in the village and reflect what needs to be improved. So, if you are worried, ranting, concerned or hopeful about local facilities and issues, don't keep it to yourself! A new group has been formed to help put together a new Community Plan for Willingham and we want to hear from you.

We're aiming to help make our village the very best place to live by ensuring that we all have the right facilities and environment for ourselves and our children, family and friends. We can't promise to achieve all our dreams, but we can make things better by working together towards community-agreed targets and pressing the appropriate authorities to implement them. Right now we are making progress, contacting authorities, agencies, interest groups and youth representatives (with a view to creating a section aimed at young people directly), among others.

How Can I Get Involved?

We will be holding two public meetings, one in June and one in July, and issuing a **questionnaire**. This new survey (both online and in paper form) will go to the whole village, allowing you the opportunity to make your thoughts and concerns known about a variety of issues. The last survey was in 2008, so it's time! This is community action! Watch out for our leaflet, coming soon to a door near you, plus further information on Willingham Village Facebook, WillinghamLife.org and more in *Willingham News*.

Happy 10th Birthday OWLS!

OWLS Community Car Scheme has come a long way in ten years. On 31 March 2011, a meeting between Care Network and some interested volunteers agreed that a Community Car Scheme was needed to serve the villages of Swavesey, Longstanton, Over and Willingham. A Committee was elected and in the following weeks a mobile phone was purchased, CRB checks were completed on the nine volunteer drivers and three of the four Parish Councils kindly provided grants/loans to help set up the scheme. Debate followed as to what to call the service and it was suggested that we should try and use the initial letters of the villages. SLOW seemed to give the wrong impression! So, OWLS officially came into being.

No-one had come forward to take on the role of volunteer coordinator but fortunately, a lady from Somersham, who was running the Community Car service in her area, offered to help out until we found a local volunteer. On 31 May 2011, our first OWLS journey was completed; a trip from Swavesey to Addenbrooke's hospital. In August that year, our first OWLS coordinator was recruited, shortly to be joined by a second. By the end of the first year, OWLS had undertaken 167 journeys, rising to 417 in 2012 and by 2019, it was 1,167. As journey numbers increased, so did the number of coordinators and drivers.

However, COVID-19 changed everything and last year the OWLS Committee decided that, for the safety of its customers and drivers, the service had to be suspended. In October 2020, after taking professional advice and in consultation with our drivers, a reduced service with full PPE protocols was resumed. Journey numbers were greatly reduced due to fewer face-to-face medical appointments taking place. However, with vaccination trips and the relaxation of some restrictions, OWLS' statistics show a monthly increase, and we hope that this trend will continue when elderly people feel more confident to go out.

Since 2011 we have had a total of 58 volunteer drivers, four of whom are from the original 2011 line-up. We currently have five coordinators and 31 drivers and have undertaken over 7,000 journeys in total. OWLS has proved to be a much-needed Community resource.

The Committee would like to say a big thank you to all OWLS drivers and coordinators, past and present, for their amazing support. All are volunteers who have given their time generously to our village communities and without whom OWLS could not function.

Lorraine Hunt

A Poem for May

Hot and cold was April,
now May has come around.
The birds are out there singing
a sweet melody of sound.

Sitting in the garden
is once again a pleasure,
reminding us to smile
for there is much to treasure.

Christine Lacey

Old Willingham



To figure out where these houses are, imagine standing at the end of Church Lane with your back to the Social Club. This row of houses ran down Fen End towards Earith Road. They were demolished (probably in the 1960s) and the current new houses built in their place. It's easy to get nostalgic and think how nice this row of cottages could have been, but they were very small low-grade houses, literally two rooms up and two down with no amenities at all. Still, undoubtedly some people made a happy home in them.

See more photos at www.oldwillingham.com and if you have stories or memories about this picture, please contact Jon Edney, 31 High Street or oldwill@oldwillingham.com.

Bowls Club Update



We should be fully open for play this month. The weather has been drying the Green and preparation for playing is now in action. As soon as we can, we will open the Club for play following the Government's rules on outside sport and gatherings.

Club members will be informed immediately when we are ready to play but non-members who would like to be kept informed should contact us, details below.

For members who wish to play in Leagues, membership is £15 per annum. NHS and Key Workers have free membership this year and under 17s are free. Willingham Bowls Club Community Scheme will also be free, when we are allowed to start it.

Contact Details:

Terry Buckley: terry.buckley@virginmedia.com or 07979 814969.

Ian Bissett: ianbissett@gmail.com or willinghambowlsclubsec@gmail.com.

Willingham Library

www.cambridgeshire.gov.uk/library

0345 0455225

Current Opening Hours:

Tuesday 2 – 6 pm

Friday 10 am – 2 pm

We Are Now Open For 'Managed Browsing'

This means you may enter the library (wearing a face covering) to choose your own books, return books, pick up reservations, *Select and Collect*, speak to staff and use a pre-booked computer. There are currently no overdue charges.

What Will Customers Need To Do?

- Bring your library card.
- Use the hand sanitiser provided when entering the library and issuing your books.
- Scan the QR code or provide details for Government Test and Trace records.
- Please be patient. We need to limit the number of people inside the building, and you may be asked to wait outside.

Digital Services

We have a wide range of eBooks, eAudio books, eComics and eMagazines which you can access online without visiting a library. Please see: www.cambridgeshire.gov.uk/residents/libraries-leisure-culture/libraries/library-online.

This information is constantly subject to change so the most up-to-date information will be displayed in the library window and at www.cambridgeshire.gov.uk/library.

Friends of Willingham Library (FOWL)

As I write this, our *Design a Springtime Bookmark* activity is still ongoing, so details of winners will be in the next issue. We hope to have information soon about when we can start some of our activities in or around the library and expect that the outdoor ones will be the first to resume over the summer months.

Reading Group Book Review

Watership Down by Richard Adams

This is an epic tale of rabbits fleeing from a prophecy of a field drenched in blood to a promised land of thyme-scented grass and wide horizons, five miles away. The small band of companions need courage, loyalty, ingenuity, second sight and fast running to escape perils and temptations, and must overcome an all-out attack from a neighbouring police state warren before they can settle in their new home.

The Reading Group awarded a solid set of sixes, sevens and eights out of ten. All of us found the story of talking rabbits engaging and readable, sometimes to our surprise and with a certain amount of skip-reading the legends of El-ahrairah, the trickster rabbit. The lovely nature writing and obvious emotional engagement of the author charmed some and left others unenthusiastic, and the degree of explicit violence and the casual 1970s sexism occasionally grated. A glossary of the invented language 'lapin' would definitely have been helpful, although 'hrududu' is a memorable word for motor vehicle. We found much to enjoy, often at an adult level, in this children's classic from nearly 50 years ago.

Janet Huxley

Thank You!

I wholeheartedly thank the people who kindly stopped at the junction of Silver Street, Green Street and Rampton End when my car was hit by another vehicle at the end of March. I was very shocked and concussed and really appreciate the kindness of the passers-by, in particular the lady who was able to get the number plate of the other vehicle, as this enabled me to call the police. To the driver of that vehicle who chose not to stop, I would like to say that, refusing to be held to account for your actions does not make you any less responsible for them, and to anyone who knows him, I would strongly advise not getting into a vehicle that he is driving, as I would not trust him to be safe.

Katy K

Gap Year

In September, I will be beginning a gap year with the Baptist Mission Society (BMS) Action Teams as part of a small group going to Gulu in Uganda. I will spend six months there working with an educational co-operative, providing activities and extra reading support for children, and helping with a local agricultural project helping farmers develop sustainable methods. After this, I hope to spend some time working with youth offenders in Kampala. On my return, I will tour the UK to tell people about the work. In order to go, I need to raise £5,500 towards the projects I will be helping with and my general living and travel costs.

My fund raising includes an online Auction of Promises, **15 – 21 May** (more details soon at www.willinghambaptist.org), a sponsored cycle ride and selling a cookbook, *Samuel: The Wright Way to Cook*, with my favourite recipes, hints and tips. It will be available from early May for a minimum donation of £5 so please email samuel.wright@fenlodge.uk for a copy.

To donate, please use: www.justgiving.com/crowdfunding/samual-wright-uganda.

Thank you so much.

Samuel Wright

Taming the Dragon

Between **6 – 8 September**, I will be taking part in the Dragon's Back Race, the world's toughest mountain race, covering 380 km (> 1.5 marathons per day) and 17,400 m of ascent (almost twice the height of Everest). At 49, some might say this is a crazy undertaking and they would likely be right!

I aim to raise a lot of money for some amazing charities. Some of you will have known my late father-in-law, Stan Tokley, who lived at Avalon in Station Road, a member of the Bowls Club for a time. He sadly passed away in December 2019, having suffered from Parkinson's disease and Lewy Body dementia. I am raising money for Parkinson's UK, the Alzheimer's Society and CPS Nepal, an orphanage in Kathmandu for which my wife Karen, with two friends, has raised every single penny needed to run it

over many years. They have given hope to young children with tragic back stories and many have already gone on to successful independent living.

To donate, please visit my blog/website www.tamingthedragon.co.uk. Every penny helps and will inspire me to finish. Thanks.

Steve Chamberlain

County Council

Suddenly the County Council is talking about all the problems that they have ignored us on for years. Oh! Is there an election soon? Will any of this be remembered after May? £7 million for a rebuilt B1050 is great but, without a ban on HGVs, it will be ruined again in six months. When roadworks or floods have closed the route to lorries, the world hasn't come to an end – does the County Council listen? We had a fine example of their efforts a few weeks ago in Berrycroft. Road closed, lots of men and machines, road resurfaced – no, patched up again. Potholes filled in – yes, but in the ratio of one filled to four left untouched.

Speeding through the village – there wouldn't be a 30-mph limit in Station Road if developers hadn't paid for it. Traffic calming – we have been asking for years, only to be told they can't afford it or 'it will cause disruption'. Don't forget this is the Council that helped spend £1.5 billion of our money on the A14 and forgot to include a southbound slip road onto the A1!

Bruce Robjent

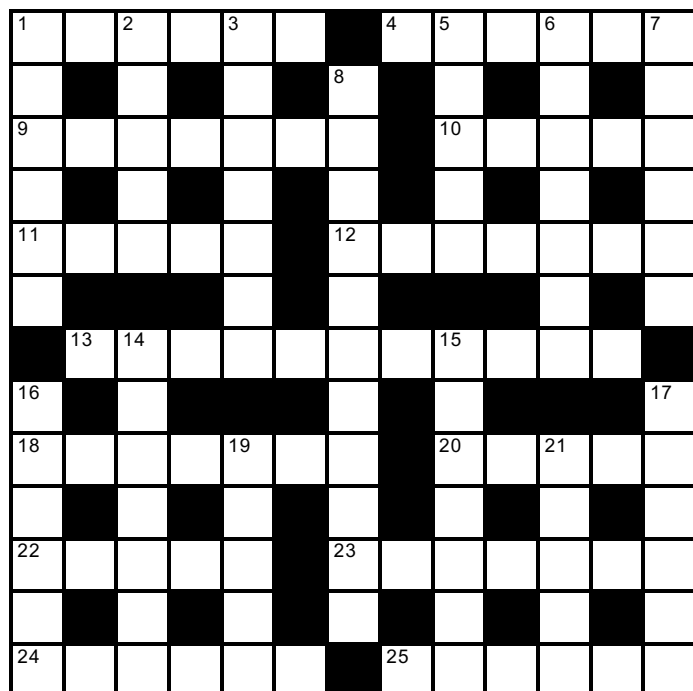
Editor's Note: This letter was forwarded to Tim Wotherspoon, County Councillor, for comment and he replied as follows:

Cambridgeshire Highways include 1,500 road bridges, 2,500 other bridges, 2,800 miles of roads and 1,900 miles of footways. The A14 and other trunk roads are built and managed by Highways England, a separate government agency. The County Council spends £1 million a week on highways, including fixing over 1,300 potholes every week. Our responsibility is to keep roads safe and serviceable, not in perfect condition, which would be prohibitively expensive. Defects logged at www.highwaysreporting.cambridgeshire.gov.uk are assessed against intervention thresholds in Highways Operational Standards, a 200-page manual reviewed annually. Action depends on severity, classification of road or footway, and weather. If an urgent repair is required below freezing it will almost certainly be a temporary 'pour and fill job' before permanent repair can be done.

Roads are generally stable for most of the year, but sudden deterioration happens at high temperatures, as in Summer 2019, and in repeated freeze-thaw conditions, as in winter of 2017-2018. As for speeding and HCVs, there are no easy answers. The County and Parish councils work together on traffic calming, and HCVs are increasingly routed away from villages, unless they have origin or destination there.

General Knowledge Crossword by Willow

Answers on page 15



Across

- 1 One of two organs with blood supplied via the renal arteries (6)
- 4 Silver-coloured alloy of tin and lead (6)
- 9 Drug with no medicinal content used in medical trials (7)
- 10 Set of principles (5)
- 11 Non-speaking actor in a film (5)
- 12 Element, a component in computer chips (7)
- 13 Influential 1982 science fiction film starring Harrison Ford (5,6)
- 18 Used to deploy a parachute (7)
- 20 Spiral part of a fingerprint (5)
- 22 Branch where birds sleep (5)
- 23 Late 70s British band originally including Jools Holland (7)
- 24 Japanese car manufacturer founded in 1937 (6)
- 25 Australian city, host of the 2000 Olympic Games (6)

Down

- 1 Smoked herring (6)
- 2 Military conscription in the US (5)
- 3 Gemstone, green variety of beryl (7)
- 5 Microsoft's spreadsheet program (5)
- 6 Molasses, a by-product of sugar making (7)
- 7 Group of gnawing animals including beavers and mice (6)
- 8 Plant root used to make a sauce to go with beef (11)
- 14 Infectious disease leading to paralysis and disfigurement (7)
- 15 Berkshire town with a racecourse (7)
- 16 Timber decay caused by fungus (3,3)
- 17 One of the seven dwarfs (6)
- 19 A band with eight musicians or singers (5)
- 21 Cinema chain or an ancient building for musical performance (5)

Book Quiz

Answers on page 15

I was in awe of the young man Max, aged 11, who slept in his tent in the garden for a year to raise money for a hospice. Despite cold, wind and rain he was inspired by his neighbour, who gave him the tent and suggested he had 'a great adventure' and he surely did! Can you name these adventurous authors?

- | | |
|---|---|
| 1 <i>The Road to Little Dribbling</i> | <i>Holmes</i> |
| - <i>the Adventures of an American in Britain</i> | 6 <i>The Poseidon Adventure</i> |
| 2 <i>The Adventures of a Young Naturalist</i> | 7 <i>The Adventure of the Christmas Pudding</i> |
| 3 <i>The Island of Adventure</i> | 8 <i>Adventure</i> |
| 4 <i>Alice's Adventures in Wonderland</i> | 9 <i>The Adventures of Tom Sawyer</i> |
| 5 <i>The Adventures of Sherlock</i> | 10 <i>The Adventures of Captain Underpants</i> |

Christine Lacey



Young Readers' Corner

Online Activities

At www.fantasticforfamilies.com there are lots of online activities and quite a lot of them, such as those below, are free of charge:

- *Let's Make Art*. Suitable for any age, this is a self-portrait tutorial running until **31 May**.
- *Storytelling: Nimesh the Adventurer*. Stories for children aged 4 – 8 until **6 June**.
- *Explore the Orchestra*. The Bournemouth Symphony Orchestra, in five programmes for ages 5 – 16, showcases each section of a symphony orchestra.

'May' Fun Facts!

- **Mayonnaise** – The usual story is that mayonnaise was invented in 1756 by a French chef after a battle won against the British at Port Mahon on the island of Menorca. However, the Spanish claim that the sauce was their invention and that the French stole it!
- In English folklore, Dick Whittington, a poor orphan boy, set off to London with his cat to seek his fortune. He had many adventures on his way but eventually became **Mayor** of London. Perhaps you will have seen the pantomime!
- 'Ne'er cast a clout till **May** be out' – A clout is an old word for a piece of clothing, so this old proverb means don't take off your warm winter clothes until the **May** flower (the blossom of the hawthorn) is out because there is the chance of cold weather until then.
- The **Maya** are Native Americans of Mexico and Central America and the height of their civilisation was between 250 and 900 CE. They were a very advanced culture with a writing system and knowledge of mathematics and astronomy. To find out more have a look at www.kidsbritannica.com.



Picture 6b. Willingham Board Schools.
The Girls' School is on the left, the Boys' School on the right.
The line across were placed on 5th February, 1897.

Willingham
Board Schools
photographs,
1897, Article
page 9



Picture 6b. Willingham School staff c. 1889.
Mary Ann Stewart (Schools' Head) top left; S. A. Ingram (Girls' Head) bottom left;
George Fyfe (Boys' Head) bottom.

Part 24 – Victorian Willingham – Schools

Reign of Queen Victoria, 1834 – 1901

The doubling of the village population from 800 to 1,600 in the first half of the 19th century created a matching demand for schooling. However, there was considerable dissension about how this was to be achieved between rival religious factions: the Anglican Parish Church, whose curates had been running the school for 200 years, and two groups of dissenting Baptists. From one Anglican school in 1818 in Church Street with 52 children, this rivalry led to there being no fewer than nine schools by 1833 with 188 children. It took a further 20 years of continuous argument before agreement was eventually reached to fund and build 'The Willingham British School' in Fen End. The building cost £370, which was raised by voluntary subscription, mostly from larger farmers in the parish. It was opened in 1856 as a mixed school for 250 children aged five to 13, and still stands today. The Primary School remained there until 1976. At the opening ceremony on 13 November 1856 over 250 villagers sat down inside it to a public tea. After the 1870 Elementary Education Act it became the Willingham Board School, and further funding resulted in a new Girls' School being built in 1878 on the corner with Earith Road (now Pegler Court) costing £850. The combined schools now had capacity for 400 pupils. A house was built for the headmaster in 1865.

Although half the costs were met by grants, the balance came from parents on a means tested basis. There were several fee levels ranging from one penny per week to six pence, but there was no fee 'for deserving children from the labouring classes'. There were also some scholarships of £4 per annum for exceptional children. Teachers were not well paid. At the end of the century a qualified teacher's salary was £60 per annum; the Headmaster's salary was £90 per annum (the average male wage earner at that time earned around £80 per annum).

The curriculum was dominated by the three Rs – reading, writing and arithmetic, plus sewing and knitting. Under its first head, George Pegler, the school flourished, with glowing reports from the School Inspector, and the curriculum was extended to include history and geography. Mr Pegler was obviously so pleased with a good HMI inspection in 1871 that he laid on a tea of bread and cake for 180 children, before holding a 'public oral examination' of pupils in front of parents that evening. They were to 'answer loudly' questions from a Mr Jagger of St Ives on mental arithmetic, reading, scripture history, English history and geography. The *Cambridge Express* reported the next day that 'the parents filling the room were astonished and greatly pleased at the promptitude of the answers to difficult questions, especially in mental arithmetic'. The report makes no mention of the torturous memorising and shaking terror that must have been suffered by some that evening.

School attendance was a major and persistent problem, despite the introduction of incentives like good attendance medals. Part of the problem was the long-established practice of child employment in rural areas to meet seasonal peaks. The attendance registers regularly list such reasons for absence: fruit picking, gooseberry pulling, raspberry pulling, blackberry picking, potato picking, reed peeling (for basket weaving) and cow-keeping. Attendance could fall to 70% and this could make teaching frustrating. In 1876 there is a note that the Headmaster 'gave a marching lesson'.

Illness was another recurrent problem. Apart from the medical problems of a pre-antibiotic era, there were very real poverty issues. On the face of it 'bad weather' may not seem a very valid excuse in the attendance register, but it was not uncommon for boots and clothes to be shared between children in large poor families. In a time of unpaved roads and winter mud, 'bad weather' could take on a different meaning. Combined with inadequate food and poor hygiene, conditions were ripe for the spread of disease. The school records show a long list of school closures or restrictions because of epidemics amongst the children over a 15 year period:

1881: Scarletina	1883: Croup
1884: Measles	1885: Typhoid
1890: Whooping Cough	1892: Diphtheria
1894: Smallpox/ Measles	1895: Mumps

Adult Education was catered for in the new school too. In 1859 a Fellow from St John's College gave a lecture to a crowded room on *Dr Livingstone in Africa*, closely followed by another on *Modern Travel in Central Africa*. Both were illustrated with a large map and watercolour drawings 'made by a Mr Genn from this town', and included a section on the Slave Trade. From 1864 there were monthly 'Penny Readings' at which Dickens and other novels and poetry were read out. They were very popular and attracted large audiences. Proceedings were concluded by a singing of the National Anthem. In 1867 a Mutual Improvement Society was established and a newspaper reading room was opened.

On this evidence Victorian Willingham would seem to have had a significant number of educated, liberal-minded people, despite the poverty extremes which persisted.

Alan Fawcitt

Next time: Victorian Willingham – Farming and Transport

Willingham Rangers

With the relaxation of the COVID-19 rules, guiding groups are now able to meet outdoors so the Rangers, who have been meeting on Zoom every week, arranged their first get-together on 2 April. To celebrate, we went on a bike ride to Herbie's American Diner. The weather was perfect as we cycled via Northstowe and Longstanton down the guided busway to Swavesey, arriving at Herbie's for milkshakes. As we retraced our path home, everyone agreed we should do it again.



Normally food features regularly in our meetings, so this term we have experimented with cooking on Zoom. For National Granola Bar Day everyone made granola bars which was a great success and no clearing up for the leaders! They have also made soup, a first for many of them, and chocolate fudge.

We had a CSI/Forensic Science themed evening. Forensic evidence was delivered to everyone and together we worked through the clues – dusting for fingerprints, testing an unknown white powder, using chromatography to work out the writer of a fake suicide note and reproducing the experiment the murder victim was doing when she was killed. With all the evidence tested, the killer was identified!

We made gifts and cards for Mothers' Day and had an Easter Egg Hunt to find, not only Easter eggs, but all the badges earned during the term. Term ended by joining the County virtual sleepover. From dens and tents erected in people's houses, we had a Zoom call while making cork horses, cooking baked apples and learning about the phases of the moon – all with the help of Oreo biscuits and ending with a campfire.

Zoom meetings have been fun but the Rangers and Guides are now looking forward to meeting regularly outside for the summer.

Lynn McGoff

Primary School Celebrates Red Nose Day

The theme for this year's Red Nose Day was *Superheroes* and children and staff were invited to dress up as their favourite. Cat Woman, Batman and Spiderman all made appearances. However, this year, children could also dress up as a Superhero who has worked tirelessly throughout the pandemic. It was heartening to see children dressed as doctors, nurses, firefighters, police officers and supermarket workers, to name but a few.

Our headteacher, Mr Morel, must have thought he was seeing things when he walked into school on that morning. He was greeted by about 15 staff wearing a 'Mr Morel' mask and dressed as him in suits and ties. He has certainly been our Superhero throughout this pandemic. He and senior staff have ensured that the Primary School has remained open for the children of key workers and some of our more vulnerable pupils. It has been a challenging time, but Mr Morel and all his staff have ensured that the needs of our children and their families have been met.



The Willingham British School Trust

A year ago, notice was given of the Trust's Annual General Meeting to be held in late April. Global events overtook that intention! Notwithstanding the pandemic's restrictive impact, over the last year the Trustees have continued to meet virtually, to evaluate applications for funding. In January, an award was made to the Primary School to meet the costs of reinstating its 'wild area' pond.

The Trustees hope to be able to hold a face-to-face Annual General Meeting in late June. Annual reports from the Trust's officers and audited accounts for the last two financial years will be considered.

Initial enquiries about eligibility for funding and applications should be made to the Trust Secretary, Dr Ray Croucher, 01954 261113 or raycroucher47@gmail.com.

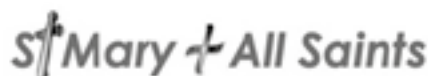
Rosie in Stitches

The Friends of the Rosie are enthusiastic volunteers whose aim is to improve the services the hospital provides by raising money for items that the NHS does not buy.

We are selling new items on our website and Facebook marketplaces and second hand items in our rosieinstitches2010 charity store on eBay.

Contact Mary Sanders on 01223 356615 or visit www.rosieinstitches.org.uk.

CHRISTIANS TOGETHER IN WILLINGHAM



CHURCH STREET, WILLINGHAM

www.5folds.org.uk

Services in Church

9 May 11 00 am Holy Communion
23 May 11 00 am Morning Prayer

Other Services

We are continuing to develop the provision of online Services. There will be a normal Sunday Service via Zoom at 9 30 am on **2 and 16 May** and a reflective Advent Service on **30 May** at 4 pm. For further information or joining instructions, please contact Lucy Cleland.

Throughout the month, an audio copy of a separate weekly service will be recorded. Please contact one of the people below if you would like a copy. Please keep checking our website, notice boards and Facebook page for all the latest news.

Reflecting on Lent

We were pleased to be able to offer a number of Study Groups via Zoom though Lent, reflecting on each line of the Lord's Prayer. We hope to have groups running through the summer term, continuing to look at the scriptures and pray together. These are open to anyone in the 5folds villages of Willingham, Over, Longstanton, Northstowe and Swavesey. For further information, please contact Reverend Dr Simon Gill, the Team Rector.

Presentations in Church

As mentioned in the previous issue, we have recently had Wi-Fi installed in the Church and are now planning how best to use it. Our initial ideas relate to streaming some services from the Church for those who find it difficult to get out and about, gathering together to watch national events as they unfold and sharing other interesting broadcasts. Of course, COVID-19 restrictions and distancing requirements might keep these ideas on the back burner in the short term. If readers have any suggestions as to which events or broadcasts might be worth presenting, please let us know.

The Octagon

We have been working to bring the Octagon back into use as a space for meetings and other gatherings for local organisations and groups, as lockdown restrictions are gradually relaxed. We will be pleased to hear from anyone considering regular or one-off bookings. In the meantime, we are looking for a cleaner to help us keep the space ready for bookings. If anyone is interested in taking on this role, please get in touch.

Contact Details

Clergy:
 Simon Gill 01954 230434 or simon@5folds.org.uk.
 Lucy Cleland 01954 277758 or lucy@5folds.org.uk.
 Jenny Hill 07970 949331 or revdjennyhill@5folds.org.uk.
 Warden: James Watts, 01954 200542 or smas17jw@yahoo.com.

Parish of the Sacred Heart of Jesus

Roman Catholic Diocese of East Anglia

www.sacredheart-stives.org

Services have now re-started at St Ives. Numbers are limited but you may join any Mass live-streamed. Details at www.sacredheart-stives.org.

For more information about the Diocese of East Anglia, please see www.rcdea.org.uk.



George Street, Willingham, Cambridge CB24 5LJ
www.willinghambaptist.org and

We are still gathering virtually as a fellowship on Sundays and also in our mid-week Wednesday Reflection. Keep an eye on our Facebook page for updates on our gatherings over the next few weeks. We have a monthly Café Church at Home, a much more informal style of meeting together and warmly welcome families to join us for these. If you would like to join us at a gathering, Café Church or mid-week reflection, please get in touch by email to secretary@willinghambaptist.org or phone 01954 263108 and we can send you details.

Emma Launchbury

Church Secretary

Thought for the Month

Rebuild for the Future or a Return to What Was?

When will things return to normal? When can I return to work and the children to school? When can I return to the pub or my sports team? Which of us has not asked a version of one of these questions in the last year? Well as I write this, we are tentatively treading that path of return as lockdown begins to ease.

In many parts of society, from theatres to churches, hobby groups to education, being forced online has actually opened up a world of opportunity and potential. For many of these, it is no longer a question of a return but a chance to rebuild bigger and better than ever.

On an individual level too, we have been forced into new patterns. Could some of these new patterns be better than the old ones? Personally, I have found that very few things are urgent and time in the present is often more precious than achieving or striving.

The idea of rebuilding better from destruction is a Biblical one: 'The bricks have fallen down but we will rebuild with smooth stones. The sycamores have been cut down but we will replace them with cedars.' *Isaiah 9:10*. The devastation of Jesus' death led to his glorious resurrection. For some, a return to normal isn't an option and the rebuilding will be the inevitable result of loss. But even here there is hope: 'He will wipe every tear from their eyes. There will be no more death or mourning or crying or pain, for the old order of things [will have] passed away.' *Revelation 21:4*.

Charlotte Hockin
Baptist Church



WILLINGHAM SURGERY & LONGSTANTON BRANCH SURGERY

Reception Tel: Willingham 01954 260230 Longstanton 207600 Dispensary 207602

District Nurse Team: 01223 726469 Option 2 Health Visitors: 0300 029 50 50

Out of hours cover: Ring 111 Website: www.willinghammedicalpractice.nhs.uk

A&E is not an alternative to a GP appointment. If we are closed, please call 111.

Second COVID-19 Vaccinations

If you have already received your first vaccination, you may be wondering when your second will be. Current guidance is that your second vaccination will be 11 – 12 weeks after your first. Please do not call us. **The surgery will contact you when it's your turn, in the same way as we did for your first appointment. It is vital your contact details are up to date on our system.**

Staffing and Waiting Times

The period before Easter was especially challenging for the practice, and we are aware that waiting times to speak with a GP were very long. We also had considerable waiting times on the phone.

The practice is now caring for over 10,000 patients, and the spike in demand due to the pandemic and the vaccination programme had a considerable impact on the Surgery in the early Spring.

In response to this, the Surgery is increasing clinical and reception staff in order to manage patient care and reduce waiting times to a more manageable level. We ask that you remain patient as new members settle into the team.

Signs of Domestic Violence and Abuse

Domestic violence, also called domestic abuse, includes physical, emotional and sexual abuse in couple relationships or between family members. There are different kinds of abuse, but it's always about having power and control over another person. Domestic violence can happen to anyone, and anyone can be an abuser.

Getting Help and Support for Domestic Violence:

You do not have to wait for an emergency situation to find help. If domestic abuse is happening to you, it's important to tell someone and remember that you're not alone.

Find out how to recognise the signs of abuse and where to get help:

- Visit www.nhs.uk/live-well/healthy-body/getting-help-for-domestic-violence.
- For confidential, non-judgmental information and support:
 - Women can call the Freephone National Domestic Abuse Helpline run by Refuge on 0808 2000 247. It's free at any time, day or night.
 - Men can call the Men's Advice Line on 0808 8010 327 (Monday and Wednesday, 9 am – 8 pm, and Tuesday, Thursday and Friday, 9 am – 5 pm).
- Talk to a doctor, health visitor or midwife.

WILLINGHAM SURGERY NORMAL OPENING HOURS

Monday	8 30 – 1 00	2 30 – 6 00
Appointments	8 30 – 11 00	3 00 – 6 00
Tuesday	8 30 – 1 00	2 00 – 7 00
Appointments	8 30 – 11 00	4 30 – 7 00
Ante Natal/Baby Clinic		2 00 – 4 00
Wednesday	8 30 – 1 00	2 00 – 6 00
Appointments	8 30 – 11 00	3 00 – 5 30
Thursday	8 30 – 1 00	2 00 – 6 00
Appointments	8 30 – 11 00	3 00 – 5 00
Friday	8 30 – 1 00	2 00 – 6 00
Appointments	8 30 – 11 00	3 00 – 5 30
Emergencies		4 00 – 6 00

WILLINGHAM PHARMACY Tel: 01954 261787 NORMAL OPENING HOURS

Monday	8 30 – 1 00	2 30 – 6 00
Tuesday	8 30 – 1 00	2 00 – 7 00
Wednesday	8 30 – 1 00	2 00 – 6 00
Thursday	8 30 – 1 00	2 00 – 6 00
Friday	8 30 – 1 00	2 00 – 6 00

Carers' Meetings

Due to the pandemic, carers' meetings are still postponed until further notice and will be reinstated as soon as it is safe to do so. In the meantime, we would like to continue to support carers in our local community so, if you are a carer and need advice and financial or emotional support, please contact Sue Lawson at susan.lawson7@nhs.net or 01954 260230.

Lisa Smith

Assistant Practice Manager

Willingham Photography Club

Under current conditions, we are not able to meet in person, but continue aiming to learn more about photography and have fun. There is a monthly assignment with photographs entered online for consideration and feedback from our resident professional photographer.

The theme for May is *Water: A Black and White Image*.

Photographs should be submitted by **17 May** via www.willinghamphotoclub.org.uk, following the link to the Virtual Assignments Google Drive.

We cordially invite anyone who enjoys photography to get in touch. Your expertise level does not matter, nor the nature of your camera. Membership is £20 for six months, with the first month free of charge but subscriptions are currently deferred.

For further details, please contact Steve Harding, 07595 668161 or visit our website at www.willinghamphotoclub.org.uk.



WE'RE HIRING!
Contact us for permanent
or subcontract vacancies

**we've got your home
improvements covered**

PLUMBING & HEATING

- ▶ fit a new boiler ◀
- ▶ upgrade your heating system ◀
- ▶ annual service for your boiler ◀

BUILDING SERVICES

- ▶ bathroom & kitchen installation ◀
- ▶ new build ◀
- ▶ home renovation ◀

call us on: **01954 782920**
or visit: **www.ijcbuildingservices.co.uk**



IJC is a family run Cambridgeshire business with over 30 years' experience.

We offer a comprehensive range of domestic and small commercial works across all forms of building, plumbing, heating and renewable services.

45 Viking Way, Bar Hill,
Cambridge, CB23 8EL

MOBILITY EQUIPMENT

**STAIRLIFTS, SCOOTERS, WHEELCHAIRS,
RISING CHAIRS, BEDS, WALKERS, TOILET &
BATHING AIDS, KITCHEN & HOUSEHOLD
AIDS, CONTINENCE CARE, CUSHIONS**

HOME VISITS AVAILABLE

**SCOTSDALES GARDEN
CENTRE,**

HORNINGSEA, CB25 9JG

Tel: 01223 863908

www.orchard-mobility.co.uk



Monday - Saturday 9.00-5.00

**Orchard
mobility centre**

**SME
funding
— UK —**

*Helping you to find the
right funding, right now.*

Do you need business finance?

Your local, independent specialist can help you to find the best deal to support your business and accelerate growth.

- Asset finance • Cashflow/Invoice finance
- Property finance • Unsecured loans

Trusted in the industry for over 30 years.

Authorised and regulated by the
Financial Conduct Authority - FRN 772970

For a free, no-obligation chat, contact us
today on 01223 848 844 or visit our website

www.smefunding.uk



Member of the National Association of Finance Brokers and registered with the Information Commissioner's Office (ZA209808) SME funding UK Ltd is a broker, not a lender and can introduce you to a number of finance providers based on your requirements and credit rating, we may receive a commission for such introductions. SME funding UK Ltd company number 10410655 registered in England.

Registered office: 14 Austin Friars, London, EC2N 2HE.

**YOUR HOME IS AT RISK IF YOU DO NOT KEEP UP REPAYMENTS ON
A MORTGAGE OR OTHER LOAN SECURED ON IT.**


**THE
HOUND DOG HOTEL**
Homely dog boarding in Willingham

Contact Mandy Booth

M: 07878561454

E: info@thehounddoghotel.co.uk

For more information and prices visit

www.thehounddoghotel.co.uk



**DOWN TO EARTH
ELECTRICAL LTD**

**info@down2electrics.co.uk
07709 084618**

A Willingham based company offering full electrical services



Beauty Specialist offering:

**All Face and Body Waxing | Tinting
LVL Lash Lift | Brow Lamination**



Based at in-home salon in Willingham, or mobile appointments available

www.cambridgebrowsandwaxing.com

01887 541659

instagram.com/cambridgebrowsandwaxing

FROM THE PARISH COUNCIL

www.WillinghamParishCouncil.gov.uk

Local Elections

Election Day is **6 May**. Voting will take place in the Ploughman Hall, 7 am – 10 pm and will follow strict COVID-19 guidelines. This means two metre separation and wearing masks. Please also bring your own pen or pencil to avoid sharing. Voting is for County Councillors, the Mayor and the Police Commissioner. There will be no vote for the Parish Council, as there are fewer candidates than seats on the Council.

Earith Road

The Parish Council presented a bid for a grant from the County Council Local Highways Initiative (LHI) for traffic speed reduction on Earith Road. Unfortunately, despite our best efforts, for the second year running we fell just short of approval for the allocated funds. We were very hopeful this year in view of the Highways-agreed funding of £6.9 million to reconstruct the B1050 Shelford Road alongside the river, probably next year. Hopefully, this work will enhance a bid for the next round of applications. Our MP, Lucy Frazer, has also been involved. She received a reply from the Highways Department which stated in part:

'There is a scheme for 2021/22 funded by the A14 legacy fund which proposes to install a section of missing footpath leading up to the Orchard, a local amenity. As part of this scheme the existing speed limit signs will be relocated further out, and some passive traffic calming features will be installed.'

We will watch this development and hope it matches our proposals. For more information, look on the Community RoadWatch site for Willingham: www.roadwatch.org.uk/cambs/willingham where you can find the latest results and historic data collected so far.

Dog Fouling

There are increasing reports of dog owners not clearing up after their pets. It is illegal not to do this on all public highways, whether roads and pavements, footpaths, bridleways and public rights of way. Can we remind all those responsible for dogs fouling public places and adjacent verges to clear up and either put it in a suitable bin or take it home with them? With the better weather and easing of lockdown restrictions, our village will be a nicer place for all to enjoy if this is done.

Carbon Footprint

In last month's issue, we mentioned a Parish Carbon Footprint Calculator. If you are looking for practical ways to reduce your carbon footprint, see: www.cambridgecarbonfootprint.org. Under 'What You Can Do', 'Get Advice' shows the four key areas of food, energy, transport and shopping that we, as individuals, have control over. There are suggestions of actions, with clear explanations of why and how.

COVID-19

With the government roadmap proceeding, more of us will be meeting up and making use of the facilities in and around the village. We will all have seen the evidence of people enjoying themselves over the Easter break, and the debris they have left behind. Can we remind you to ensure that everything you bring is taken home with you, or put in the bins provided? The litter is not only unsightly and unpleasant, but can be a hazard for everyone, especially those who have to clear up.

Council Meetings

From **7 May**, the Parish Council will be required to return to physical meetings. Due to COVID-19 regulations on distancing, only a limited number of residents will be able to attend. We ask that any members of the public wishing to do so notify the Clerk in advance of the meeting, so that we can ensure we are compliant with COVID-19 rules and everyone remains safe. The Annual Meeting of the Parish Council will be held on **18 May** in the Ploughman Hall.

The Annual Parish Meeting, hosted by the Council on the Parish's behalf, will be held on **28 April**. This meeting will be held remotely and our Community Plan Group and Local Community Warden will be attending, to give residents an update on their work in the village.

Beautiful Willingham

There are proposals to make the roads into the village more attractive by planting wildflower seeds along the verges. Whilst this will take a few years until the full benefits are realised, it will brighten the approaches to the village. Also, the Parish Council is looking at adding planters for flowers at various locations, which will add colour as you walk through the streets.

Contact Details:

Councillors' details can be found on the website but below are details for the Chair/Vice Chair and Lead Councillors.

Council meetings are usually held on the first Wednesday of the month, starting at 7 30 pm. Agendas are published on the website and the notice board outside the Public Hall in the High Street. Members of the public are welcome to attend and speak briefly or ask questions (see agendas for further details).

Council Office Details:

Ploughman Hall, West Fen Road, Willingham. Tel: 01954 261027.

Email: clerk@willinghamparishcouncil.gov.uk.

Opening hours: Monday – Thursday 10 am – 1 pm (closed Bank Holidays).

Mrs Mandy Powell

Parish Clerk

D Law	Parish Council Chairman	cllr.law@willinghamparishcouncil.gov.uk	01954 202188
N Harris	Planning Committee Chairman	cllr.harris@willinghamparishcouncil.gov.uk	07792 611226
P King	Parish Council Vice Chair	cllr.pking@willinghamparishcouncil.gov.uk	01954 260780
L King	Leisure & Amenities – Lead Cllr	cllr.lking@willinghamparishcouncil.gov.uk	01954 260780
R Manning	Greens & Boundaries – Lead Cllr	cllr.manning@willinghamparishcouncil.gov.uk	01954 261235
B Mansfield	Cemetery – Lead Cllr	cllr.mansfield@willinghamparishcouncil.gov.uk	01954 261540
R Tassell	Halls – Lead Cllr	cllr.tassell@willinghamparishcouncil.gov.uk	07974 673836

Infringement of Bread Order

The following is from a report in the *Cambridge Daily News*, 12 May 1917. Many new restrictions were imposed during World War I which were no doubt as confusing as those in force today. This case came before the Divisional Bench in Cambridge in May 1917 and was the first of its kind in the area after the Bread Order came into force. Albert Mills, grocer of Willingham, was summoned for exposing seven loaves of currant bread for sale.

‘PC Smith said that on April 21 he was on duty in Church Street, Willingham when he saw seven loaves of currant bread exposed in the window of the defendant’s shop. The defendant admitted that it was currant bread and that it came from St Ives. He did not know he had done wrong and only knew what was in the newspapers. His daughter* then took the cakes out of the window. He asked PC Smith if he had admitted that it was currant bread, and Smith replied “Yes”. The Clerk of the Court then intervened to ask if PC Smith had seen the currants himself, and Smith replied that he had. Mr Mills said that he had been obliged to stop selling cakes when he thought that they did not meet the requirements of the Act. When in St Ives he had seen the buns in a shop window, had asked the shopkeeper if he was in order selling them, and the shopkeeper had replied “Yes, perfectly”. On the strength of this he purchased 12 dozen buns and nine currant cakes. He was told that the cakes complied with the Food Controller’s Order and on the receipt, there was a statement to that effect. He felt he had done everything short of having the cakes analysed. The Chairman of the Bench then told him that the penalty for infringement was very heavy, amounting to a fine of £100 or six months in prison. The magistrates however decided that it was a case of inadvertency and fined Mr Mills £1.’

*Older residents will remember Connie Mills, later Mrs Huffer, who ran the shop after her father for many years.

Anne Kirkman

Willingham Social Club

The club will be reopening from **Tuesday 18 May** at 5 pm. Our Facebook page and posters at the Club have full opening times and please note that, for the first month, there will be some earlier closing times.

As before, all Government guidelines will be followed with social distancing, table service and hygiene measures in place. Initially only fully paid members will be permitted (sorry no guests or children until further notice). The Club is also fortunate to have some undercover outdoor seating and garden picnic benches. Wednesday Cash Bingo will commence on **2 June** in the Function Room for everyone over 18 under the same guidelines.

The Club has some Live Music Nights pencilled in for the Members’ Bar from May to July, so be sure to gain membership if you want to enjoy some local entertainment. Details can be found on our website and Facebook.

We sincerely hope we can soon get back to our lively evenings at the Club, taking a careful and considered approach to keep everyone safe.

Aldreth Causeway A Historical Walk

For a historical walk from Willingham, you can walk along the Aldreth Causeway, which is a registered right of way, and a route that is well signposted with depictions of wooden causeways through the fens, battles and old forts. You can join this walk at various places: Rampton Road, the top of Schole Road, Meadow Lane or, my preferred starting point, off Priest Lane/Iram Road.

From the library, follow Priest Lane (which becomes Iram Drove) until, on your left, you come to a parking area with a sign showing the history of the Aldreth Causeway. It depicts how William the Conqueror built a timber causeway across the marshes in an attempt to capture Ely. Take the path on your left and follow the signs. You will be walking straight through the Iron Age fort of Belsar’s Hill and, although it is difficult to see, there are some vantage points from the path where you can make out the shape.

A long (and sometimes muddy) straight path will bring you out on to Meadow Road. Cross over where another notice board tells you more of the history. You can follow the Causeway all the way to Aldreth and in total this is about a five-mile round trip.

Before you get to Aldreth, about three quarters of the way, you will cross the River Great Ouse. On our walk, you will go straight over but alternatively at this bridge there are different walks along the banks either side of the river, but be warned there is no bridge. You can walk back into Willingham if you take the first left or an alternative route into Aldreth, taking the second right, or you can end up walking back on the same ridge. These are walks to explore another day.

Sticking to the main path straight across the bridge, you will soon come to the village of Aldreth. Here I take an obvious loop to the left (named The Boot), then join a path immediately on the left again which goes parallel to the route inwards, but on the other side of the imaginatively named Catchwater Drain (because I like variety in my paths!). I rejoin our original path with a left, once back at the bridge over the River Great Ouse again.

Alternatively, if you prefer a (mostly) paved walk, there is a circular walk up Priest Lane going left on to the Causeway then left again on to Meadow Lane and back into Willingham, finishing up with a pint and lunch at the Duke, when out of lockdown!

I would love to hear about your favourite Willingham walks. If you are a long-term resident, please tell me about walks you have done over the years that you would like to see registered. Thank you.

Steph, steph@paulandsteph.co.uk, 07747 613256

Crossword Answers

Across: 1 Kidney, 4 Pewter, 9 Placebo, 10 Creed, 11 Extra, 12 Silicon, 13 Blade Runner, 18 Ripcord, 20 Whorl, 22 Roost, 23 Squeeze, 24 Toyota, 25 Sydney.

Down: 1 Kipper, 2 Draft, 3 Emerald, 5 Excel, 6 Treacle, 7 Rodent, 8 Horseradish, 14 Leprosy, 15 Newbury, 16 Dry rot, 17 Sleepy, 19 Octet, 21 Odeon.

Book Quiz Answers

1 Bill Bryson, 2 David Attenborough, 3 Enid Blyton, 4 Lewis Carroll, 5 Sir Arthur Conan Doyle, 6 Paul Gallico, 7 Agatha Christie, 8 Jack London, 9 Mark Twain, 10 Dav Pilkey.

Gardening Club

Over the Garden Fence

Support

Your perennials may be looking stocky and self-supporting now, but don't fool yourself that this will continue. Once plants have flopped, you will have blown it as propping up after the event looks trussed-up and awkward. Pre-emptive support is the only way. Slip in plant supports now and they will act like undergarments, providing lift just where you need it but without anyone knowing. Different plants have different needs, but all supports need to go in now. Work out what your garden needs and spend a little time placing props over emerging perennials for a pert summer garden.

Spring Bulbs

Proper aftercare of our lovely spring flowering bulbs is a key part of the annual bulb cycle, as on it depends the quality of next season's display. The removal of spent blooms is recommended where this is practical. Obviously, it is out of the question for larger areas, but worthwhile for smaller gardens and tubs and troughs. The dead flowers should be removed with a knife, secateurs or scissors, don't tug them. Remove only the blooms, leave the stalks. Never remove the leaves at this stage as they produce food reserves for the bulb and so must be retained until they are yellow or brown and withered. Do not tie long leaves into a knot. These yellowing leaves can be unsightly, and there are several ways of tackling the problem. In a mixed border surround the bulbs with plants which will be in leaf or flower when the bulb leaves turn yellow. Sometimes a bedded area is needed for other plants – here the bulbs could be lifted after flowering and heeled in, out of sight, until the foliage has turned brown.

Food for Thought

Spring has sprung but it pays not to rush things. Harden off tender plants properly by putting them out (with, importantly, shelter from the wind and strong direct sunlight) during the day, and back under cover at night. Failure to do this can result in retarded growth, or worse. Take note, there will be a New Moon on **11 May** and **10 June** and a Full Moon on **26 May** and **24 June**. Bear in mind that, if we have clear skies, there is a strong possibility of a frost even on the New Moon in June, so protect your tender plants. Also, several consistently bitterly cold days/nights will cause damage to blossoms and tender plants.

Help the Bees

Watching bees is a summer highlight for many gardeners and it's an excellent idea to have flowering plants for as many of the months as you can. Early flowers are particularly vital for bumble bees and solitary bees, fresh out of hibernation. Much emphasis is placed on providing pollen and nectar, but nesting sites are also vital. Leave a sunny bank unmown so that queen bees have a place to nest. Dry stone walls provide crevices and they also like positions protected by overhead trees, such as hazel.

Things to do in May

- 1 Watch out for and protect tender plants from late frosts (see note above about new and full moon dates).
- 2 Earth up potatoes.
- 3 Plant out summer bedding towards the end of the month.
- 4 Regularly hoe off weeds.
- 5 Collect rainwater and try to find other ways of recycling water for use in the garden.

Carol Bailey

An Update from Fen Drayton Lakes

Ducks, geese and swans are out on the water. Many have paired up and may even already have a brood of ducklings, goslings or cygnets. Great-crested grebes are performing courtship dances or disappearing under the water as they dive for a meal and, along the lake-edges, a heron stalks through the shallows. The soft lowing of cattle can be heard in the wet grassland habitat as they graze this area, maintaining the vegetation for breeding waders. Overhead, displaying lapwing can be seen with their wavering, up-and-down flight and characteristic 'peewit' call as they lay claim to the best nesting habitat whilst redshank, the 'sentinels of the marsh' watch on, ever vigilant for danger. Reed, Sedge and Cetti's warblers can be heard singing from within the reed as water rail and coot call from the base. You may be lucky enough to see a bittern skulking along as it blends into the background. Dragon and damselflies are in abundance as they dart around on the hunt and perch on

the reed and other vegetation. The tern rafts, constructed to imitate small shingle islands, provide perfect conditions for nesting common tern and black-headed gull. Watch as they build nests, incubate eggs and bring small fish in to their chicks.

All around the sights and sounds of nature offer us a chance to forget for a time the stresses of life and connect with the great outdoors. However, this tranquillity can be quickly shattered as wild creatures are easily disturbed and can be put off from using areas where people and dogs regularly go. You can help wildlife flourish at Fen Drayton Lakes by not entering areas that are reserved for nature and keeping dogs on a lead or under close control on the public footpaths. Please help us help nature thrive. Thank you.

Email: fendraytonlakes@rspb.org.uk.

Phone: 01954 233260.



Andy Tibbett & Sons
Painting & Decorating

- * All internal & external work carried out to a high standard
- * Trade references can be supplied
- * Very competitive pricing
- * A prompt & polite service from a name you can trust

Telephone: 01954 230810
Mobile: 07717 493723 Email: andrewtibbett@hotmail.co.uk




ARTISAN LANDSCAPES
Est. 1988

www.artisanlandscape.co.uk

Paving, Fencing, Pergolas, Ponds, Pruning, Structures etc

jonathan_ashman@hotmail.com
07768 821354

 **Jonathan Ashman Artisan Landscapes**

A.R.Aspinall & Sons Ltd
Tel: 01954 234966 Fax: 01954 234967
Unit 11 Norman Way Ind Est, Over, Cambs, CB24 5QE.
www.araspinall.co.uk

WE STOCK A FANTASTIC RANGE OF NATURAL PAVING PRODUCTS COME AND VISIT OUR NEW DISPLAY AREA.

Bricks Concrete Blocks Lintels Cement Sand
Gravel Hardcore Timber Fixings Footwear
Decorating Supplies Industrial clothing Paving Slabs

Opening times: Mon to Fri 7.30am – 5pm



WE OFFER A FREE LOCAL DELIVERY SERVICE!

Buttercups
CHILDCARE LTD

Bar Hill Day Nursery

Provision for children aged 4 months to 5 years.
Ofsted Rated Good.

Working towards accreditation with The Curiosity Approach.
For enquiries, contact info@buttercupchildcareltd.co.uk
www.buttercupchildcareltd.co.uk



David Wake
Carpentry and Joinery

- Fitted Kitchens • Specialised Joinery
- Doors and windows • Property repairs

Office: 01954 260678 Mobile: 07836 290112

THIS MAGAZINE WAS PRINTED BY

 **Target Print Ltd**
DIGITAL AND LITHO PRINTING



Quality printing
to fit your budget

Newsletters • Brochures • Flyers • Letterheads • Compliment Slips • Menus
NCR/Carbonless Sets & Pads • Manuals • Business Cards • Postcards • Labels
Booklets • Posters • Roller Banners • Envelopes • Wedding Stationery
Continuous Stationery • Invitations • Folders • and much more ...

Broad Lane, Cottenham, Cambridge CB24 8SW
Telephone: **01954 251189**
Email: print@targetprint.org
Web: www.targetprint.org

Ward Solutions Ltd

We specialise in the installation of flue lining systems, wood burner's and fireplaces, 15 years experience.

We can supply you with a stove or install one supplied by you.

Other services include- chimney re pointing, smoke tests, And fitting pots and cowls.

HETAS registered

Call or email for a free survey

0800 357 92 91
01954 200 021
info@wardsolutions.co.uk






ACA
Heating & Plumbing

46 Church St
Willingham
Cambridge
CB24 5HT

Gas and oil boiler servicing, breakdowns
Boiler upgrades and heating installations
Bathroom and Wetroom installations
Un-vented cylinder installations/servicing
All types of plumbing and heating works undertaken
Local friendly services with over 14 years experience




Andrew Leahy mobile: 07833 204499
Email: andy@acaplumbing.co.uk
www.acaplumbing.co.uk

A summary of the County and District Councillors' Annual Reports appears below. As they were too long to include in full here, the reports appear in their entirety at www.willinghamlife.org in the Willingham News Extras section.

County Councillor's Annual Report, 2020 – 2021

On 23 March 2020, 27 million people watched the Prime Minister announce the first lockdown. Activating our regular emergency planning training, Cambridgeshire County Council immediately hit the 'pandemic' button and converted itself into a social support organisation. This has been an extraordinary team effort resulting from all of us working together and, as one of the village volunteers put it perfectly, 'bearing each other's burdens'.

A recent survey of under 40-year-olds by Cambridge Ahead has identified close access to green space as a top priority for those who live and work in the area. I have joined the Board of Natural Cambridgeshire, which is committed to taking us into a future no longer threatened by climate change, biodiversity collapse and social inequality. Check your air quality by entering your postcode and house number at www.addresspollution.org to get a report on pollutant levels.

The Cambridgeshire and Peterborough 'Vision Zero Partnership' has a radical new road safety strategy that no one should be killed or seriously injured in a road collision, www.cambridgeshire-pcc.gov.uk/accessing-information/cambridgeshire-and-peterborough-vision-zero-partnership.

The Planning White Paper published in August proposed a more rules-based approach to planning permission, based on three land categories: Growth, Renewal, Protect.

The Government's national bus strategy will get £3 billion of funding. The Department for Transport is exploring an all-ways junction at Girton. East-West Rail is consulting on routes from Bedford to Cambridge via Cambourne. The Government's 'Gear Change' with a £2 billion investment heralds a step change in cycling and walking. There will be new standards for cycling infrastructure and Active Travel England has a new national Cycling and Walking Commissioner. An Office for Health Promotion will encourage us to eat better and move more.

Tim Wotherspoon

Annual Report from South Cambridgeshire District Councillors (SCDC)

This report covers highlights from the last year of activity by your District and local Councillors.

COVID-19 Related Grants to Businesses and Discretionary/ Hardship Grants

The Business Support Team at SCDC has been supporting all local businesses through the pandemic, advising 2,000 businesses and paying out £10,570,066 in Government business grants to 4,447 local businesses since last November and £3,550,204 in discretionary/hardship grants.

Community Volunteers

A heartening thing from the pandemic has been the terrific community volunteer response. At the height of the COVID-19 emergency, an estimated 4,500 people in South Cambridgeshire were helping their fellow citizens get through the worst of the crisis. Willingham was blessed with an excellent group, well organised and effective, led by residents Stephanie Prior and

Katja Gauci and we would like to thank them for their excellent work.

Mobile/Community Wardens

In the last year, SCDC has increased the number of District Mobile/Community Wardens. Willingham's scheme, managed by Age UK, started at the end of 2020 and places are available. Please see: www.scambs.gov.uk/community-development/mobile-warden-scheme.

Flooding

The exceptional amount of rain tested the drainage systems to the limit and beyond. SCDC is in multi-agency talks to see how our joint response can be improved.

Traffic and Speeding

A big issue in the village is the heavy, and often speeding, through traffic. This is the responsibility of Cambridgeshire County Council, not SCDC, but we are very aware of the inconvenience and irritation that this causes and will lobby for improvement.

Construction of New Council Housing

We have a policy to increase the number of council properties for people on lower incomes and have built 66 new council homes in the last year. Built to a high specification, some of the properties have solar panels and air-source heat-pumps.

SCDC Five Year Housing Land Supply (5YHLS)

Local planning authorities, like SCDC, must demonstrate that they can deliver the minimum number of new homes set by the Government. The 5YHLS figure for Greater Cambridge (South Cambridgeshire and Cambridge City) has recently been reassessed at 6.1 years which means that we can apply our Local Plan policies without the fear of speculative and unsustainable development.

Free School Meal Vouchers

We supported a 'GoFundMe' page set up by local campaigner Firouz Thompson to raise money to provide free meals during the holidays for Pupil Premium children in our local schools. The £2,600 raised was used to purchase Co-op gift vouchers which were distributed to seven local schools, including Willingham. Thank you to those who donated.

Being 'Green to Our Core'

This includes increasing wildlife-rich habitats and tree canopy, improving access to green spaces and replacing all SCDC street lighting with low energy LED light (nearing completion, this should reduce energy usage by 60%).

An audit of the energy efficiency of existing council housing stock has been done and an improvement campaign will soon begin.

We are operating an electric bin lorry, one of the first Local Authorities to do so.

Our successful Zero-Carbon Communities Grant scheme has provided almost £100,000 of grant funding to 17 Parish Council and Community Group Projects to help them with carbon reduction and energy efficiency measures. The scheme for 2021-22 opens on **10 May** and funding will be available for community buildings, tree planting and other initiatives to reduce carbon emissions.

We are very much looking forward to resuming our usual monthly surgeries once the COVID-19 restrictions are lifted but are always available by phone or email and we try to respond quickly.

Dawn Percival, cllr.percival@scambs.gov.uk, 07948 683599
Bill Handley, cllr.handley@scambs.gov.uk, 01954 200287

CAMBRIDGESHIRE BATHROOMS

Dream - DESIGN - ACHIEVE

- Premium Brands
- 3D Bathroom Design Service
- 2 Extensive Showrooms
- Technical Advice Throughout
- In House Delivery Team

Unit 1
Willow Road
The Lakes Business Park
Fenstanton
Cambridgeshire
PE28 9RB

01480 598 750

Mon - Sat - 9am to 5pm
cambridgeshirebathrooms.co.uk



3D Bathroom
DESIGN
Service



R. A. Miller Plumbing and Domestic Heating

Fenside, 71 Willingham Road, Over

Cambridge CB24 5PE

Tel: 01954 203277 Mob: 07831 853885

Email: robert.miller@btworld.com

All plumbing work undertaken

- New boiler replacement and installation with free quotation
- GAS boiler and GAS fire servicing - Landlord Certificates
- Heating problems - Diagnosis and rectification
- General plumbing - taps, washers, pipe work, showers, etc.
- Full and partial Bathroom installation work

For a reliable and professional local service

Robert Miller

Office 01954 203277

Mobile 07831 853885



Willingham Post Office

15 High Street, Willingham CB24 5ES

01954 260331

Mon - Fri 08:30 - 18:00 Sat 08:30 - 15:30

- All mail services, including special delivery
- Travel Currency, Travel Money Cards, Travel Insurance and MoneyGram
- Passport Photographs, Passport Check and Send Service
- Document Certification Service
- International Driving Permits
- Vehicle Tax and Bill payments
- Financial Products - Insurance, ISA, Growth Bonds, Credit Cards and much more
- Broad Band and Phone Packages, Phone Top-Ups
- Free Cash withdrawals for most major Banks as well as Cash & Cheque Deposits
- Photocopying and Laminating Service
- Great range of Greeting Cards, Stationery and Pack & Post Items



AJ Carpentry

Domestic & Commercial Carpentry & Building Services



Your local, family run business specialising in transforming project dreams into reality!

Extensions - Refurbishments - Conversions -
Kitchens - Flooring - Electrical work - Bespoke
furniture - AND SO MUCH MORE!

07989 341724



01954 202267

www.ajcarpentry.co.uk

Highgate Country Stores Ltd



Over Road, Willingham, Cambridge, CB24 5EU

- High Quality Pet Food and Accessories
- Poultry and Farm Animal Feed and Equipment
- Horse Feed, Equipment and Bedding
- Riding Accessories
- Fuel - Flo Gas, Logs, Kindling and Coal



Open 7 Days a week

www.highgatecountrystore.co.uk Telephone: 01954 260798

info@highgatecountrystore.co.uk

Highgate Butchers



We sell locally sourced quality meat and poultry enhanced by a wealth of butchery experience from our friendly and knowledgeable staff.

Come and see for yourself our great range of beef, Lamb, Pork, Poultry and Game products, not forgetting our 28 day aged beef.

Opening times: Mon: Closed / Tue-Sat: 8-5.30 / Sun: 9-2
Tel: 01954 260444 highgatebutchers@gmail.com

ON THIS DAY IN MAY

1 May	The Penny Black, the world's first adhesive postage stamp, was issued in 1840.
2 May	The Loch Ness Monster became a media sensation when a sighting made the news in 1933.
3 May	The first British Heart Transplant was carried out in 1968 in London's National Heart Hospital.
4 May	The first edition of the <i>Daily Mail</i> was published in 1896 costing a halfpenny.
5 May	Chanel No 5, the first perfume by Coco Chanel, was launched in 1921.
6 May	Roger Bannister ran a mile in less than four minutes in 1954.
7 May	HMS Victory was launched in 1765. Now docked in Portsmouth, it's a museum.
8 May	Coca-Cola was introduced in Atlanta, Georgia, in 1886.
9 May	The Channel Islands were liberated in 1945 after five years of German occupation.
10 May	Nelson Mandela became the first black President of South Africa in 1994.
11 May	Prime Minister Spencer Perceval was murdered in the House of Commons in 1812.
12 May	The first County Championship Cricket match took place in 1890.
13 May	The hunger strike by Chinese students started in 1989 in Tiananmen Square.
14 May	The classic horse race, The Oaks, was first run at Epsom racecourse in 1779.
15 May	The composer of <i>Tubular Bells</i> , Mike Oldfield, was born in Berkshire in 1953.
16 May	Joan of Arc was canonised as a Roman Catholic saint in 1920.
17 May	The Dam Busters, using bouncing bombs, hit their targets in 1943.
18 May	Napoleon was declared Emperor of France in 1804.
19 May	Henry VIII had his second wife, 29-year-old Anne Boleyn, beheaded in 1536.
20 May	Blue jeans were patented in America in 1875 by Jacob Davis and Levi Strauss.
21 May	Aviator, Charles Lindbergh, achieved the first solo crossing of the Atlantic in 1927.
22 May	Arthur Conan Doyle, creator of Sherlock Holmes, was born in Edinburgh in 1859.
23 May	Bank robbers, Bonnie and Clyde, were killed in a police ambush in Louisiana in 1934.
24 May	The inaugural Eurovision Song Contest took place in Switzerland in 1956.
25 May	Celtic won the European Cup final in 1967, the first British team to win the Cup.
26 May	The first Dow Jones stock market index was calculated by the <i>Wall Street Journal</i> in 1896.
27 May	The Dunkirk evacuation of 338,226 soldiers began in 1940.
28 May	Ian Fleming, James Bond's creator, was born in 1908. He also wrote <i>Chitty Chitty Bang Bang</i> .
29 May	Hillary and Norgay were the first people to stand on Mount Everest's summit in 1953.
30 May	Cliff Richard released his 100 th single, <i>The Best of Me</i> , in 1989.
31 May	<i>Peppa Pig</i> , the preschool TV series, aired for the first time on Channel 5 in 2004.



Our salon offers all aspects of hairdressing including wedding hair with a personal touch. We can come to you on your special day.

Tel: 01954 260224

EDGAR FARRELL

CONSTRUCTION

WWW.EDGARFARRELL.CO.UK

**NEW BUILDS/ EXTENSIONS/ CONVERSIONS
BATHROOM & KITCHEN FITTING**

EDGARFARRELL2@YAHOO.CO.UK 07919800895



Home & Garden Handyman Services

- ❖ QUALITY, insured workmanship at very competitive pricing.
- ❖ Internal and external works undertaken. No job is too small.
- ❖ Experience with vulnerable people.
- ❖ ENHANCED DBS security checked.
- ❖ Discount schemes offered.

Reliable.

Honest.

Local.

Friendly

M: 07562 212056 T: 01487 842968

E: hello@epshomeworks.co.uk

W: epshomeworks.co.uk



Becky's Fitness

Becky's Fitness on Facebook – drop me a message to find out more.

All Classes being held on-line Via Facebook Live, up to 10 classes per week for Just £20 per month.

Classes include Fitness Pilates, HiIT, Aerobics, Body conditioning & Cardio Dance

07905097961
becky@beckysfitness.co.uk
FIRST WEEK FREE



LETTINGS & PROPERTY MANAGEMENT

Tel: 01954 260200 e-mail: enquiries@cpbm.co.uk

Website : www.cambspropertybureau.co.uk

Kirsty Cornwell Coaching

NLP Practitioner, Ollie Coach and Hypnotherapist

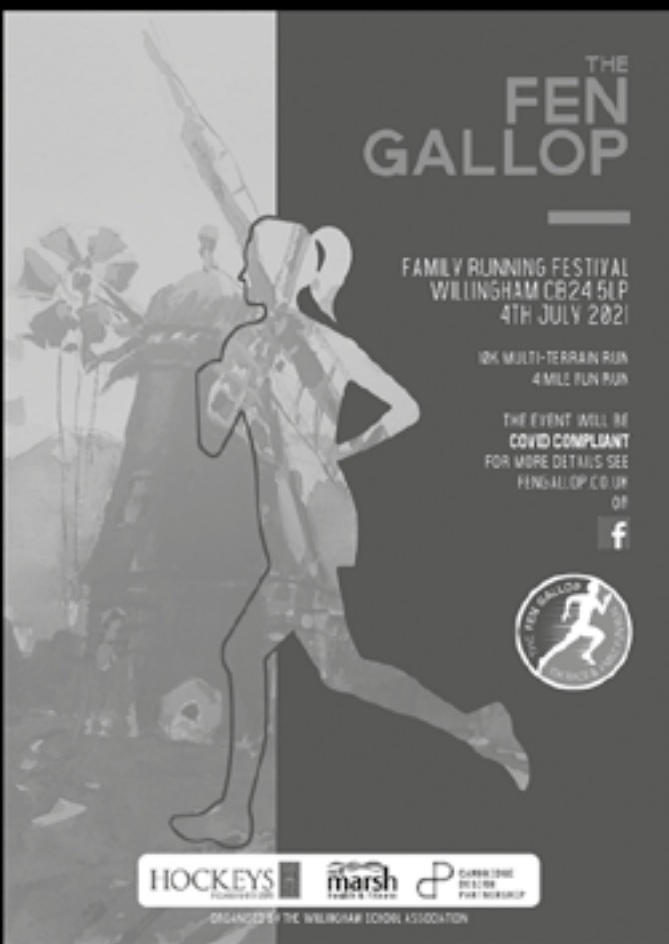
Helping children and adults to manage their emotions
Contact for services and appointments available

www.kirstycornwellcoaching.co.uk

The Coaching Cabin, 59 Church Street, Willingham, Cambridge CB24 5LQ

Mobile: 07990610517


Email: kirstycornwell6@gmail.com







THE FEN GALLOP

FAMILY RUNNING FESTIVAL
WILLINGHAM CB24 5LP
4TH JULY 2021

10K MULTI-TERRAIN RUN
4 MILE FUN RUN

THE EVENT WILL BE COVID COMPLIANT
FOR MORE DETAILS SEE FENGALLOP.CO.UK OR 



HOCKEYS  

ORGANISED BY THE WILLINGHAM IDOL ASSOCIATION

JASON KIRBY

Professional Painting
& Decorating Ltd

*A Professional Service
from Start to Finish*

Tel: 01954 211775
www.jasonkirbyltd.co.uk



*Stay safe,
observe social distancing and
wash hands regularly*



The Complete Gas Heating and Plumbing Company

**Plumbing • Heating • Gas • Bathrooms
Water Softeners • Property Maintenance**

Tel: 01954 204044 • Web: www.entiregroup.co.uk
Email: service@entiregroup.co.uk

HOME HELP for SENIOR CITIZENS

Do you know someone in need of some Help at Home?

* Cleaning * Meal preparation * Company * Errands
* Ironing * Bed Changing * Laundry

Same Home Help – Same Time – Same Day

All Staff are DBS checked, trained and reference checked

Call for more information on **01480 383340**

The Home Help Company



elglaze *Your home. Our heritage.*
est. 1983

Windows - Doors - Conservatories & more



Casement
Windows



Composite
Doors



Bespoke
Conservatories



Sash
Windows

CONSERVATION
AREA APPROVED

QUICK ESTIMATE



www.elglaze.co.uk/estimate

01954 770770 | www.elglaze.co.uk

FENSA MTC REGISTERED



**Willingham Mini Skips
Mini Digger Hire (with driver)**

**We provide a quality service at
competitive prices to meet
your personal requirements**

For further information telephone
01954 261119 or 07774 197960

**YOUR PERSONAL WEALTH.
OUR PERSONAL RESPONSIBILITY.**

At Tilney, we have been helping clients achieve their financial goals for more than 180 years. Whether you are saving for retirement, want to pass on your wealth or would like to have your investments managed by an expert, we can do the same for you.

To find out how we can help you, please call our Cambridge office on **01223 452 840** or email neil.trickett@tilney.co.uk for Investment Management or laura.ingram@tilney.co.uk for Financial Planning.

Investments carry risk –
investors can lose money investing.
tilney.co.uk

TILNEY

PLANNING | ADVISING | INVESTING

VILLAGE DIRECTORY

Please notify *Willingham News* of any changes

Council and Community	Parish Council (<i>See full details on page 14</i>)		01954 261027
	County Councillor	Tim Wotherspoon	timothy.wotherspoon@cambridgeshire.gov.uk
	District Councillor	Dawn Percival	07948 683599 / clr.percival@scambs.gov.uk
	District Councillor	Bill Handley	01954 200287 / clr.handley@scambs.gov.uk
	Willingham Community Planning Group	Chris Chesher	chrischesher@aol.com
Services	Police		101
	Surgery		01954 260230
	Dispensary for repeat prescription requests		01954 207602
	Library		0345 045 5225
	Pharmacy		01954 261787
	Over Surgery		01954 231550
	Urgent Care Cambridgeshire		111
Schools	Community Warden	Joanne Twinn	wardens@ageukcap.org.uk 07812 496002
	Primary School	Mr Dave Morel	01954 283030
	Willingham Out Of School Club (3–6 pm only)	Mrs M Lenk	01954 283033
	School Governors Chairperson	Katy Stevenson	chair@willingham.cambs.sch.uk
	School Association	c/o school	01954 283030
	British School Trust	Ray Croucher	01954 261113
Children	Beavers, Cubs and Scouts	Matt Haigh	adventure@1stwillinghamscoutgroup.org.uk
	Honeypot Pre-School (term-time only)	Mrs Kate Van Dort	01954 201567
	Koala Kidz	Mrs Edith Jeffrey	01954 260046
	Guides and Rangers	Lynn McGoff	willinghamguides@hotmail.co.uk
	Messy Church	Margaret Edney	07528 193858
	First Steps	Vicky Page	vickypage85@gmail.com
	TOPS (Baptist Church Toddlers Group)	Katy Gilbert	01954 261922
	Little Notes Music Group (0-4 years)	Lisa Adcock	07949 062360
	KFC Kid's Friday Club Years 1-6 (Baptist Church)	Lorriane Bald	01954 261189
Halls	Ploughman Hall Bookings	through Parish Council	01954 261027
	Wilford Furlong Centre		01954 261445
	The Octagon	Gillian Beal	admin@5folds.org.uk
	Baptist Bookings and Rentals	Emma Launchbury	01954 263108
	Willingham Social Club Bookings	Lynne Sadler	01954 260557
	Willingham Youth Centre bookings		willinghamsocialclub@gmail.com
			email: enquiries@willinghamyouthtrust.org
	Allotments	Sue Ayling	01954 260718
	Billavincea Lodge 8719	Mr M Scrivener	01480 413533
	Fen Edge Community Association	Eileen Wilson	chair@fenedge.co.uk
Local Representatives	Over & District Royal British Legion	Jane Matthews	07983 630265
			overanddistrictrbl@yahoo.com
	OWLS Community Car Scheme	Lorraine Hunt	07505 254363
	Willingham Action Group (WAG)	Mike Tidball	01954 260647
	Willingham Combined Charities	Kassia Bunnett	k.bunnett@googlemail.com
			07969 541095
	Willingham RBL Poppy Appeal Organiser	Graham Atherton	01954 260331
	Willingham Bee Group Chairman	Steve Smith	07795 215071
	Friends of Willingham Library (FOWL)		willinghamlibraryfriends@gmail.com
	Gardening Club	Mrs C Bailey	01954 260794
Clubs	WBC Youth Club (Baptist Church Years 7–9)	Bev Thomas	01954 789230
	Willingham Dance Club	Teresa Weston	willinghamdanceclub@gmail.com
	Willingham Social Club	Lynne Sadler	01954 260557
			willinghamsocialclub@gmail.com
	Willingham Jam Club	Julian Eales	01954 201818
	Willingham Photography Club	Steve Harding	07595 668161
	Willingham Running Club	Monica Garcia	gcompass.monica@gmail.com
	Willingham Walkers	Mike Tidball	01954 260647
	Willingham Youth Club	Jack Stinton	07960 615898
	Women's Institute	Wendy Law	01954 202188
Sport	Angling	Colin Dodd	07773 719330
	Badminton	Sarah Custance	01954 202005
	Bowls Club	Ian Bissett (Sec)	ianbissett@gmail.com
			Willinghambowlsclubsec@gmail.com
	Cricket Club	Mr R Ambrose	01954 610113
	Cycling Club – www.willinghamwheels.com	Paul Knighton	07787 530394
	Ladies' Hockey	Teresa Hutchcraft	01954 260177
	Tennis Club	John Graham	01954 231968
	Willingham Diamonds Netball Club	Emma Byrom	01954 202481
	Willingham Running Club	Gerry Mears	07511 131645
Churches	Willingham Sports Pavilion	through Parish Council	01954 261027
	Willingham Wolves (Boys & Girls Football)	Jamie Smith (Sec)	01954 261141
	Mothers' Union	Mrs Sue Hayden	01954 260363
	Baptist Church	Emma Launchbury	01954 260538
	Methodists (Ministerial Contact)	Rev Simon Oliver	07554 202929
	Roman Catholic Priest	Rev Thomas J Walton	01480 462192
	Parish Church	Simon Gill	admin@5folds.org.uk
			01954 230434

Selling or Letting your Willingham home for the best price takes experience, skill and commitment.



...four office coverage helps, too!
Ensure your home gets the coverage it deserves.
Call Tylers.

01223 214400
hello@tylers.net
tylers.net



Vintage
travel

ESTABLISHED
1990

Your Local
Travel
Company



HANDPICKED VILLAS WITH POOLS

A selection of beautiful individual villas & houses with pools in tranquil settings & areas of traditional local culture.

Call for a brochure or to speak to one of our specialists **01954 261431**

or visit our website
vintagetravel.co.uk

GREECE • SPAIN • LANZAROTE • BALEARICS • PORTUGAL
TURKEY • FRANCE • ITALY • CROATIA • CYPRUS



Paying too much tax?
Paperwork a burden?
Accounts fee expensive?
Like a business review?

At **Uttridge Accounting** we understand your business and tax needs and provide a range of services to meet your requirements, including:

- Accounts Preparation
- Self Assessment
- Taxation Advice
- Business Start-ups
- Business Planning
- Payroll Services
- Online Accounting

For professional accounting expertise, attentive personal service and great value for money, contact us today.



ACCA

01954 263000
info@uttridge-accounting.co.uk
www.uttridge-accounting.co.uk



SPECIALISING IN THE
SALE OF HOMES IN
WILLINGHAM AND THE
SURROUNDING VILLAGES

HOCKEYS
ESTABLISHED 1885

