

Willingham News

FREE TO EVERY HOME

village website: www.willinghamlife.org

willinghamnews@gmail.com

March 2021



Stamp Chiropody & Podiatry



Casey Stamp MCPod BSc (Hons)
HCPC registered CH15068

- General chiropody – nails, hard skin & corns
- Diabetic foot care
- Children's Feet – Growing pains, Verrucas, etc.
- Sporty Feet & associated injuries + pains
- Ingrowing toe nails
- Custom made Orthotics/Insoles
- Dancing feet – we'll keep you on your toes
- Biomechanics & Gait analysis

New Clients Always Welcome.

Find us at:

Willingham Medical Practice,
52 Long Lane, Willingham,
Cambridge, CB24 5LB

Tel: 01480 464507 or 07807505534

Also available at:

Salus Wellness Clinics
47 Norfolk St
Cambridge CB1 2LD

Tel: 07807 505534

www.stamppodiatry.co.uk

English Rose
BEAUTY HOUSE

BEAUTY • SPA TREATMENTS • RELAXATION

Specialists in Shellac Nails, Bio Sculpture Nails, Manicures & Pedicures, Spray Tanning, Hair Removal, Eyelash Extensions, Facials, HD Brows, Waxing, Tinting, Make-up and Massage.

16 Berrycroft, Willingham, Cambridge CB24 5JX
Tel: 01954 261176 Email: info@englishrosebeautyhouse.co.uk
www.englishrosebeautyhouse.co.uk



WILLINGHAM MOTORS LTD

YOUR LOCAL INDEPENDENT GARAGE FOR ALL SERVICING/REPAIR REQUIREMENTS, MOT TESTING, AIR CONDITIONING, DIAGNOSTIC SOFTWARE, EXHAUSTS, TYRES

CAR SALES – P/X WELCOME CAR/VAN STOCK LOCATOR
QUALITY VEHICLES BOUGHT FOR CASH FREE COURTESY CARS

Tel: 01954 260467/206566 E-mail: willinghammotors@aol.com www.willinghammotors.co.uk

WILLFLOWER FLORISTS



134 Rampton Road
WILLINGHAM

Tel: 01954 260 831

*Fresh Cut Flowers, Bouquets, Wreaths,
Wedding Flowers and Arrangements*

THE PLOUGHMAN HALL WEST FEN ROAD, WILLINGHAM

Book Willingham's village hall for your

Wedding Reception

Birthday Party

Private Function

Play or Musical Event

Club or Society Meeting

The Ploughman Hall

Offers:

A large hall

Bar facilities (subject to licence)

A fully equipped kitchen

Disabled friendly facilities

Ample off-road parking

Check out our competitive hire charges and make your booking at the Parish Office (01954 261027)

The Ploughman Hall – Willingham's village hall

O'MALLEY SOLICITORS

Family Law Specialists

Divorce • Matrimonial Property & Finances • Co-habitation Disputes Children Matters • Prenuptial Agreements.

With over 16 years' experience, we take a sympathetic and sensitive approach to Marriage and Family breakdowns.

Contact us on **01954 202075**.

O'MALLEY SOLICITORS

84 Rampton Road, Willingham, Cambridge, CB24 5JQ
Tel: 01954 202075 E-mail: omalleyssolicitors@googlemail.com
Authorised and Regulated by the Solicitors Regulation Authority
SRA No: 318339



www.bushelboxfarmshop.co.uk

01954 206015

Local Fruit, Vegetables, Eggs, Preserves & more
Open Tues - Fri 10 - 6 and Sat until 4



130 Station Rd Willingham CB24 5HG



*Cambs Oven
Cleaning*

Revive Your Oven,

Contact Ian Morley on 07584 684853



CONTENTS

March News

Barton's Field	5
Basketball Club.....	11
Brief History of Willingham – Part 23	10
Census.....	16
County Councillor's Message	16
District Councillors' Report	18
Fen Gallop	21
Old Willingham	6
Poem for March	16
Primary School	5
Readers' Letters	15
Willingham 170 Years Ago	6

Clubs and Societies

Gardening Club.....	12
Photography Club.....	10
Willingham Action Group.....	5
Willingham Hub.....	5
Willingham Sustainability Group.....	12
Women's Institute	6

Quizzes

Book Quiz	8
Crossword.....	8
Answers	18

Monthly Items

Bin Collections.	3
Celebration Days in March.....	20
Christians Together	9
Directory	23
Library	7
Medical Practice.....	11
Parish Council.....	14
Pastoral Letter	9
Young Readers' Corner.....	8

Willingham News is a subsidiary of Willingham News Ltd and is edited by volunteers. We do our best to ensure the accuracy of the content of the submissions, but this cannot be guaranteed. We reserve the right to edit or omit articles at our discretion. The views expressed in readers' letters are not necessarily those of the editorial team. Send your contributions to **willinghamnews@gmail.com** as an email attachment of up to 250 words (no pdfs) to arrive before the monthly deadline. The Editorial Team comprises Liz Cosford, Jane Dowle, Wendy Law, Frances Watts, James Watts and Trevor Weston.

The **deadline for your contributions is the 8th of each month**. As the library still has restricted opening, hard copy can be dropped off at 15 Balland Field.

Bin Collections – Fridays

Friday 5 March	Blue and Green
Friday 12 March	Black
Friday 19 March	Blue and Green
Friday 26 March	Black

To contact local police, phone 101 or email:
SCambsCops@cambs.pnn.police.uk

PLEASE NOTE:

Back issues of *Willingham News* from October 2005 to the present (with the exception of March 2006) are now available on the Willingham Life website run by WAG:
www.willinghamlife.org/page/willingham-magazine-back-issues

Advertising

We would like to thank all our advertisers for their continued support during these difficult times. It's due to them that *Willingham News* is able to serve the village. Please continue to support our local businesses now and in the future when restrictions are lifted.

Advertising is sold on an annual basis for an insert into 12 issues beginning in January. Send any advertising queries or copy to: **advertising.wnews@yahoo.co.uk**, marking your e-mails Adverts. The *Willingham News* team wishes to thank all the advertisers for their support and interest. They play a vital role in maintaining this publication and also in our community as local businesses supplying goods and services. If you contact an advertiser, please mention that you saw their advertisement in *Willingham News*. Thank you all very much.

ALAN'S CARPETS

Carpets and Vinyl Supplied and Fitted

We have been in the carpet trade for over 47! years

Samples to your home, Measure, Quote

Express delivery and fitting included

Phone 07790 681317

or

07790 544250

SUTTON TREE SERVICES

- HEDGE MAINTENANCE
- TREE REMOVAL, FELLING & REDUCTIONS
- GENERAL PRUNING
- STUMP REMOVAL
- FULLY INSURED
- NPTC QUALIFIED

Please call to discuss your requirements or to arrange a free quote.
Paul Young 07765 223 692 or 01353 775 076



Cottenham Computers

01954 593025

Call the experts for good honest advice



We will come to your home or business to fix your computer

Got any of these issues?

- ✓ Computer crashing
- ✓ Network Wi-Fi connection Issues
- ✓ Computer infected with viruses
- ✓ Windows won't boot
- ✓ Can't access your email
- ✓ Can't access the Internet
- ✓ Computer running very slow

With over 16 years experience it is likely we have seen your problem before. We are happy to advise you free over the phone..

We don't charge a fortune

So give us a call TODAY! We won't bite!

Working all day? Then we can collect and deliver FREE to and from your work place*

* Within 10 Miles of Willingham

We cover Willingham & surrounding towns & villages

For all computer related problems give us a ring!



www.cottenhamcomputers.co.uk



Karen BEAUTICIAN

DAYTIME & EVENING APPOINTMENTS

95 Rampton Road
Willingham
Cambridge CB24 5JQ

Tel: 01954 260375
Email: karendench@hotmail.com
www.karenbeautician.co.uk



ARK FACIALS

SHELLAC/OPI
MANICURES
AND PEDICURES

ST. TROPEZ
SPRAY TAN

AROMATHERAPY
MASSAGE

TINTING

HOP! EAR
CANDLES

EAR PIERCING

MAKEUP

MARK BIRD
ELECTRICAL
SERVICES

Mark Bird

Electrical contractor
NICEIC Domestic Installer
Part P Approved

Tel: 01480 493008

Mobile: 07961 505189

Email: mbird494@btinternet.com



CHIMNEY SWEEP

J. L. Wight

Guild of Master Sweeps, Certificates issued
Advice given/problems solved

01954 253315

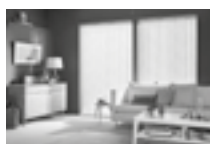
www.camsweep.co.uk

9 Cow Lane, Rampton



J&G Blinds Ltd

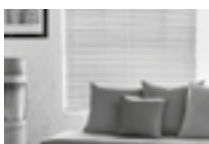
Conservatory & Window Blinds



Vertical Blinds



Roller Blinds



Venetian Blinds



Roman Blinds



Shutters



Soft Furnishings



Conservatory
Blinds



Perfect Fit
Venetian Blinds



Fly Screens

Tel: 01954 261149

Email: jandgblinds@aol.com

Universal Fencing Co Ltd

Established
30 Years

Tel: 01954 230860

mob: 07786012990

www.universalfencing.co.uk

SUPPLY ONLY OR SUPPLY AND ERECT
FREE ESTIMATE



Palisade



Featheredge



Field Gates



Security Fencing

8 Arthur Court Norman Way, Over, Cambridge, CB24 5AL

Open: MON-FRI 7.30 - 5pm

Commercial, agricultural, industrial & domestic fencing contractors



Church End Carpet & Vinyl Centre

We are a family run business, established in Cottenham in January 1982

We offer a comprehensive range of quality carpets, vinyls and laminate flooring at highly competitive prices with a great service and fitting.

76 High Street
Cottenham
Cambridge
CB24 8SD

Email: sales@churchendcarpets.co.uk

Tel: 01954 250287

www.churchendcarpets.co.uk

Open: Monday, Tuesday, Wednesday, Friday: 10:00 - 18:00
Saturday: 10:00 - 17:00

Barton's Field

A new recreational amenity for the enjoyment of villagers has been donated to the Parish Council by Mr John Ferguson.

Walkers and well-behaved dogs are welcome to explore and use the field, although it must be emphasised that access is via Blackpit Drove, which is a private driveway and should not be used by cars. The fields behind are also private, so please do not exit from the far end.

The Field is approximately two acres and is on the north-west side of Blackpit Drove (on your right hand side as you walk away from Rampton Road). It was once one of many dedicated to growing flowers for sale.

The name was suggested by Mr Ferguson, who recalls 'I bought the Field from Douglas Barton. His declaration in 1986 explains that he acquired the land from his father, Donald Barton in 1974. Donald had acquired it from his father, Charles Barton, in 1952. Charles acquired the land in 1937. So the Barton family had owned the land for nearly 50 years. When I bought the field in 1986, it was planted with what we called 'Dumosa' (Statice) and Delphiniums.'

The Field is now laid to grass with a small wood top and bottom and is planted with an assortment of fruit and smaller trees in the centre. There is a central path winding through and a straight path back down on the northern side.

The Parish Council would like to express their gratitude on behalf of the whole village, for this generous donation.



Willingham Hub

On behalf of Willingham Hub, I would like to thank all those wonderful residents who have donated items to the Willingham Emergency Food Bank as well as the volunteers who have been delivering the food packs. Because of your kindness we continue to be able to support those in the village who find times difficult during this COVID-19 pandemic.

Mike Tidball

The Primary School

School Governor Vacancy

The Primary School is a much loved and key part of our community providing a wonderful learning environment for many children in Willingham. To support the continued success and growth of the school, the Governing Board are currently looking to recruit a new Governor to join us from the wider community (and with no children currently at the school).

We are particularly keen to hear from you if you have a background in Human Relations and would be keen to share your skills and experience. We have a fantastic and experienced Board in place but are looking to add to our strength in depth. You will not need any prior knowledge of the Governor role, as training will be provided, just the time and commitment to make a difference within our community. Please do contact me for more information at chair@willingham.cambs.sch.uk.

Thank you

Katy Stevenson

Chair of Governors

Computers for Local Schools

During COVID-19 lockdowns and school closures, home learning has become part of the way of life for families with school age children. However, it soon became apparent that many families did not have computing equipment that could adequately connect to the internet and thus had no access to the teaching material being provided. The situation was highlighted in local and national media prompting people to donate and repurpose equipment.

Willingham Action Group, together with Willingham School Association, took the initiative to contribute to the local need by collaborating with the Primary School and Cottenham Village College (The Schools). Contacts were soon established with volunteers, who had the knowledge and expertise to clean and prepare donated devices. There was a great response to an appeal for donations made through our village social media pages and in all we were able to pass on some 30 suitable devices, which were shared by The Schools and Cottenham Primary School. We had contact with another support group in Cottenham, who were working in support of the Village College and the Primary School in their village.

The Schools reported that the re-purposed computers, when added to those being supplied through Government schemes or purchased direct, had met their needs and expressed their appreciation of our efforts and the community response. Willingham Action Group and Willingham School Association add their thanks to all involved, including those who donated equipment, together with a cash donation of £300 directed to the School.

Graham Mumby

Willingham Action Group

Willingham Women's Institute



In January, we tried out a new way of holding a meeting via Zoom. On the first night 17 members logged in, which was felt to be a pretty good start, so we've now planned out a programme for the next few months. Given the on-going situation with the virus and lockdown, it is extremely unlikely we will be able to do anything other than virtual meetings for the foreseeable future.

For our February meeting, 24 members Zoomed for Kaye Rooney's talk about *The Chinese Nourishment of Life Tradition*. It was an interesting introduction to the ideas behind Chinese Medicine and Acupuncture, in which Kaye is a qualified practitioner.

Chinese medicine differs from its Western counterpart in its holistic approach, taking account of the body and mind together. Kaye described the Chinese idea of the body as a Kingdom with the Emperor ruling as the heart and being connected to all the other mutually dependent organs. She explained a little about acupuncture and how the needles are placed in relation to the organs' channels around the body.

Chinese medicine is heavily based on prevention of disease and promotion of wellbeing via exercise, nourishment and food. Exercise such as Tai Chi and Qi Gong are recommended as they provide 'internal medicine', massaging the organs with gentle movements designed to switch off stress and switch on relaxation. Craft work can also help to settle the mind.

Food and diet are very important in promoting good health. Eating good quality food and not combining eating with watching television or reading are beneficial to digestion. Larger meals should be eaten earlier in the day as illustrated by the maxim: *Breakfast like a King, Lunch like a Prince and Dine like a Pauper!* It was a great talk and thankfully Zoom allowed us to look at Kaye's presentation while seeing her speak, so we were pleased that it all worked!

The second part of the meeting was *My Treat to Myself in Lockdown*. Members had been given an amount of money to spend on a treat and shared what they had bought by describing them or waving them in front of the camera for everyone to see. There were a great variety of items purchased including a Nativity scene to knit by next Christmas, a first ever winter hat, bubble bath, some *Candy Crush* gold bars, perfume, a Beanie baby for a grandchild, a Porterhouse takeaway and various plants, flowers and books, including a colleague's first novel. It was fun to see them all.

Our March meeting will be on **Monday 8 March** at 7 30 pm on Zoom. We will be having a very brief Annual Meeting (not much to report for 2020!) and then a Quiz. In normal times, we meet on the second Monday of the month at 7 30 pm in the Social Club. If you would like to join us, please email willinghamwi28@gmail.com and we will keep you up to date. Our WI is well supported, friendly and a great way for women in the village to socialise and get to know new people. Why not give it a try?

Old Willingham



In the days before the big supermarkets people did most of their shopping in the village and there were many grocery shops serving their needs. Here is one that is long gone. Although hard to read, the prices seem to be post-decimalisation so it's probably in the mid 1970s. You may recognise this as the shop on Church Street now occupied by an Accountant's business. Allegedly, Raven's shop on the High Street strongly opposed decimalisation and held out for ages – converting people's money to Pounds, Shillings and Pence and back again when making purchases. Does anyone know if this is a true story?

See more photos at www.oldwillingham.com.

If you have stories or memories about this picture, please contact Jon Edney, 31 High Street or oldwill@oldwillingham.com.

Willingham 170 Years Ago

This item appeared under *Willingham News* in the *Cambridge General Advertiser* in March 1850.

Reading Society.

'Notwithstanding the bitterness shown by certain parties in Willingham to the Reading Society, it flourishes. Yes, it is proceeding in spite of ignorance, selfishness and malevolence and it is cheering to the minds of intellectual men that several of the young men of Willingham who can read (we are ashamed to say there are many, very many, who cannot) attend the Reading Room almost every evening and peruse with profit the many suitable works and newspapers provided for them. Many things calculated to cultivate the minds of young men have been started in other towns and villages, but in none was there greater necessity for an establishment like this than at Willingham. Can any of the inhabitants, who call themselves respectable, have heard the disgusting and obscene language used in the streets by the uneducated youths, and then say that it is not necessary to make an effort to reclaim them from ignorance and depravity?'

Anne Kirkman

Willingham Library

www.cambridgeshire.gov.uk/library
0345 0455225

Willingham Library is open
Our current opening hours are:
Tuesday 2 – 6 pm
Friday 10 am – 2 pm

Library Access

The library will be open in accordance with the national lockdown restrictions and we are still offering:

- **Select and Collect Service**

This allows you to request a selection of books from a particular genre, which library staff will choose for you. If you want specific books, please use the normal reservations system.

- **Reservations**

There will be a charge of 50p for each reserved item.

- **Public Access to Computers on an Appointment Basis**

Bookings will be limited to those accessing public services only.

- **Digital Services**

We have a wide range of eBooks, eAudio books, eComics and eMagazines which you can access online without visiting a library. Please see: www.cambridgeshire.gov.uk/residents/libraries-leisure-culture/libraries/library-online.

Overdue charges

There will be no reintroduction of overdue charges at this time.

This information is constantly subject to change. The most up-to-date information will be displayed in the library window and at www.cambridgeshire.gov.uk/library.

Friends of Willingham Library (FOWL)

Springtime Activity for Children – Friday 26 March to Friday 9 April

We are inviting all Primary School children to design a Springtime related bookmark. Any size or shape will be fine. Think flowers, baby animals, blue skies and sunshine! When completed, please take your design to the library lobby to receive a small reward. Remember to add your name and contact details too, as the entries will be judged and the best from Foundation Stage, Key Stage 1 and Key Stage 2 children will be awarded a prize. We look forward to seeing your entries.

Meanwhile we will have to remain patient and wait for our library-based activities to resume once more. We are hopeful for the summer.

Cambridgeshire Library Service News

Library Live Book Club

In partnership with Bonnier Books UK, Cambridgeshire Libraries brings you four new books each month, plus a range of podcasts, author interviews and more for you to explore! For more details log on to www.Library.Live/book-club.

Twitterchats

To help us through lockdown we've brought our Twitterchats back. Join us at 2 pm every Monday using #Cambslibchat to mull over the bookish topic of the week.

Bookshop.Org

Buying a Book online but want to support independent bookshops and your local library?

Look no further than Cambridgeshire Libraries Bookshop UK, with 10% of sales going to the Library Service and 10% going to support independent bookshops: www.uk.bookshop.org/shop/cambslib. This is an online bookshop with a mission to financially support local, independent bookshops. We believe that bookshops are essential to a healthy culture. They are places where authors can connect with readers, we can discover new writers and children will get hooked on the thrill of reading that can last a lifetime. As more people buy their books online, we wanted to create an easy, convenient way for you to get your books and support local bookshops at the same time.

Facebook for Families

We're developing a new Facebook page – the Cambridgeshire Libraries Families Page. We have so much information on our main page and want to make it much easier for families to find all of our events. Have a look and follow us from the very start at www.facebook.com/CambslibFamilies.

Read a Little Aloud

Join us in listening to our volunteers reading a variety of poems, stories and literature from the comfort of your own home.

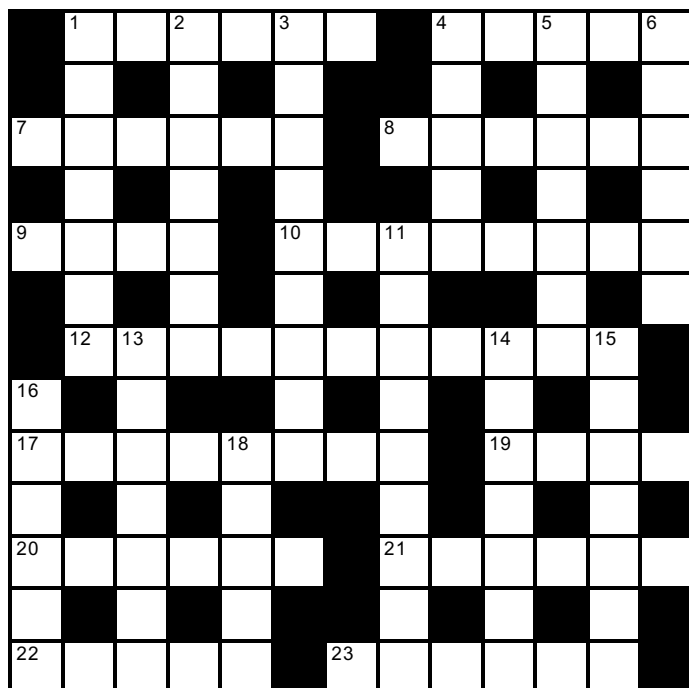
Tuesday 2 March, 2 – 3 pm – Shakespeare's Women

Tuesday 16 March, 2 – 3 pm – Mothers

If you are interested in being in the audience for either of the above events or finding out more, please contact the Read a Little Aloud team at: RALA.Online@cambridgeshire.gov.uk.

Quick Crossword by Willow

Answers on page 18



Across

- 1 Extreme fear (6)
- 4 Fundamental (5)
- 7 Body tissue (6)
- 8 Tropical fruit (6)
- 9 See (4)
- 10 Has a stab (8)
- 12 Journey's end (11)
- 17 Union (8)
- 19 Heart of the matter (4)
- 20 Building for vehicle (6)
- 21 Guffaws (6)
- 22 Sister's daughter (5)
- 23 Without hindrance (6)

Down

- 1 Punched (7)
- 2 Repeats aloud (7)
- 3 Procedure in theatre (9)
- 4 Huge fire (5)
- 5 Hair detergent (7)
- 6 Unrefined (6)
- 11 Globetrotter (9)
- 13 Stretch (7)
- 14 Embody (7)
- 15 Badly behaved (7)
- 16 Specialised language (6)
- 18 Corner (5)

Book Quiz

Answers on page 18

As we will all be changing our clocks again this month, I have chosen books with the word 'Time' in the title. Welcome to Spring!

- | | |
|--|---------------------------------------|
| 1 <i>A Time to Kill</i> | 6 <i>Hard Times</i> |
| 2 <i>The Time Traveler's Wife</i> | 7 <i>The Land that Time Forgot</i> |
| 3 <i>The Time Machine</i> | 8 <i>A Dance to the Music of Time</i> |
| 4 <i>The Curious Incident of the Dog in the Night-Time</i> | 9 <i>A Brief History of Time</i> |
| 5 <i>Love in the Time of Cholera</i> | 10 <i>A Wrinkle in Time</i> |

Chris Lacey



Young Readers' Corner

Guest Editors this month – Ester, Isla, Sol and Honor Overton

Slime Recipe

Slime is always a huge hit in our house. We make it way too often!

This is our favourite recipe –

Ingredients

- 1 cup of white or clear glue (pva)
- 1 teaspoon of bicarbonate of soda
- 1-2 teaspoons of contact lens solution (it must have borax in the ingredients as that's the magic bit!)
- A squirt of paint or food colouring – your favourite colour.

Method

So, what do you have to do? First, stir together the glue and bicarbonate of soda in a bowl. Add in the squirt of colouring and mix. Now add the contact lens solution and keep stirring until it starts to get stringy and comes away from the edge of the bowl. Take it in your hands and knead it for a minute or so until it only sticks to itself. It will be super stretchy!

You can also add glitter or glow in the dark paint. Our favourite is to make it fluffy slime! To make this, add three cups of shaving foam to the mixture before you add the contact lens solution, and it will be super stretchy AND super fluffy!

Enjoy!

Super Star Wars Jokes

Why did Anakin cross the road?

To get to the dark side!

What do you call Chewbacca when he gets chocolate in his fur?

A chocolate chip wookiee!

What side of an Ewok has the most hair?

The outside!

Which Star Wars character works at a restaurant?

Darth Waiter

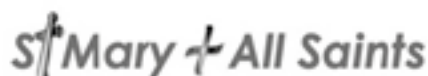
The Wind – a Poem and a Riddle as well!

Did you feel me in the air?
Did you see me dancing through your hair?
Did you feel me in the breeze?
Did you hear me whisper through the trees?

Did you smell the smoke with me?
Did you taste the salt brought from the sea?
I blew the clouds, the fog I thinned,
What am I? *I am the wind.*

Many thanks to Ester, Isla, Sol and Honor for their recipe, poem and jokes.

If you have anything that you would like to see in the Young Reader's Corner in future editions, please send your ideas to willinghamnews@gmail.com.



CHURCH STREET, WILLINGHAM
www.5folds.org.uk

Church Opening and Services

Whilst we have had to close the Church for some weeks as the COVID-19 crisis continues, we continue review the position with the aim of opening for Services and Private Prayer as soon as it becomes safe for everyone to do so.

In the meantime, we are continuing to develop our online Services, extending our provision to include online Sunday Zoom services. At the time of writing these are still being developed but we expect them to include (each month) – on the first Sunday an All Age Service aimed at families and children and on the third Sunday a Service in a more traditional style. Throughout the period our recorded weekly services can be downloaded from our website.

Please do keep checking our website, noticeboards and facebook page for news about all this and when services will be scheduled – online if not in Church – especially with Easter at the beginning of April.

Presentations in Church

Just at the time that we had to close the Church building, we were able to finalise the installation of wi-fi within the Church. We now must think how best to use it in the future, when we are able to be back in Church! For example, it would give us the opportunity to stream some Services from the Church for those who find it difficult to get out and about, as well as those who are away from home.

In addition, it gives us the opportunity to gather to watch national events as they unfold – an event such as Remembrance Day Services or similar, a series of talks or a sung concert for example. For a lot of people, gathering to join in (i.e. singing along) with a 'Songs of Praise' or similar, (if allowed), might be fun after months of not being allowed to sing at all!

Perhaps Readers have ideas or suggestions as to events or broadcasts where it might be good to gather so we can enjoy an event together (once COVID-19 restrictions are lifted). If you have any suggestions as to which events or broadcasts might be worth presenting, then please let us know – a note in our post-box outside the Octagon door to the side of the Church or a message to one of us on our contact list below would work well for this.

Contact Details

Clergy:

Simon Gill 01954 230434 or simon@5folds.org.uk
 Lucy Cleland 01954 277758 or lucy@5folds.org.uk
 Jenny Hill 07970 949331 or revdjennyhill@5folds.org.uk

Warden:

James Watts 01954 200542 or smas17jw@yahoo.com


Parish of the Sacred Heart of Jesus

Roman Catholic Diocese of East Anglia
www.sacredheart-stives.org

Services have now re-started at St Ives. Numbers are limited but you may join any Mass live-streamed. Details at www.sacredheart-stives.org.

For more information about the Diocese of East Anglia, please see www.rcdea.org.uk.



George Street, Willingham, Cambridge CB24 5LJ
www.willinghambaptist.org and 

We are still gathering virtually as a fellowship on Sundays and also for our Wednesday Reflections. Keep an eye out on our Facebook page for updates on our gatherings over the next few weeks. We have recently introduced a Cafe Church at Home, which is a much more informal style of meeting together and we warmly welcome families to join us for these.

If you would like to join us at a gathering, Cafe Church or Wednesday reflection, please get in touch by email (to secretary@willinghambaptist.org) or phone (01954 263108) and we can send you the information you need.

We are aware that people may be struggling or lonely in isolation, so if you want to chat, or pray with someone, or have any other needs, please also get in touch.

Emma Launchbury
 Church Secretary

Pastoral Letter

The world is turning, the days are lengthening; later this month the clocks go forward and we will all recognize the reality of light overcoming darkness. Christians understand this idea as a metaphor to express our belief that life and goodness are stronger forces than death and evil. Signs that this is true are evident in the natural world as we see snowdrops, crocus, daffodils all bursting into flower; new shoots are breaking out on plants that have lain dormant through the winter months. New life is always in our midst, if we open our eyes to see it.

Signs that the pandemic may be coming under control are also being seen as case numbers continue to fall; this may soon lead to some loosening of restrictions on our lives. We will still need to follow guidelines about wearing masks and maintaining social distance, so we don't undo all the progress we have made; but there is real hope that we will be able to live more fully in the spring.

The temptation will be to go 'back to normal'; but I hope not. The world has changed over the past year and so have we. We have got to know our local communities and neighbours in deeper ways. We have learned to offer - and importantly - to receive support from one another. We have developed new skills and discovered what really matters in life, the things, the people, the activities that we have really missed. Let us be thankful for all these positive benefits, alongside recognizing the grief, the struggles, the loneliness that some amongst us have suffered. Life is always a journey with ups and downs; but it is most fully experienced when we use our good times to help others come through their down times.

In other words, let's continue loving our neighbours as ourselves.

Rev Dr Janet E Tollington
 Retired United Reformed Church Minister

Part 23: Victorian Expansion – Population and Fires

Reigns of King William IV 1820 to 1837 and Queen Victoria 1834 to 1901

The first half of the 19th century was a period of enormous expansion in Willingham. By 1850 the village population had doubled from 800 at the turn of the century to 1,600. The increased numbers were largely housed in small, thatched cottages for labourers, some infilling the yards of existing properties within the village core, but now expanding on land outside it along Over Road, Long Lane, Rampton End and Berrycroft. The population would have been even larger had it not been for over 100 who emigrated to America in the 1830s and 1840s.

Thatch and Fire

Despite being a potential fire hazard, straw and reeds were plentiful and cheap. Thatch was the most popular roofing method, not only for small cottages, but also for the many barns and outbuildings near the larger farms in the village. So perhaps it is no surprise that fire became a growing threat. During the century 28 fires in the village were significant enough to be reported in some detail in the *Cambridge Chronicle*, or the *Cambridge Independent Press*, and in 1830 nationally in *The Times*. Seven of them were particularly serious, with fire spreading rapidly through haystacks, barns and outbuildings of farmhouses, causing the further destruction of adjacent thatched houses and cottages.

One of the worst was in Rampton End in September 1859 when no fewer than 16 farms, with 19 dwellings, eight barns, three stables and many tons of harvested crops and animals were destroyed in the fire. An idea of the readily combustible materials in and around farmyards is given in the insurance claim from one farmer, (William Few) – one barley stack, four wheat stacks, one bean stack and two oat stacks. On this occasion the fire was caused by an eight-year-old boy with a match, but other causes over the period included four from lightning strikes, two from temporary copper chimney pipes 'for brewing activities', as well as overheating grain. Another three were caused deliberately as 'grudge' fires.

The late Dennis Jeeps produced an unpublished pamphlet on the fires in Willingham in the 1800s, reproduced from newspaper reports. The seven really large fires were in 1830, 1852, 1854, 1859, 1866, and two in 1891. The reports include details of insurance claims and causes, but also of injuries. Amazingly there were no deaths, although many suffered burns. Not all premises were insured and there are graphic accounts of families left homeless and destitute.

Willingham had two fire tenders, which were kept in the entrance porch of the Church, and were frequently augmented by horse-drawn tenders from Cottenham and Cambridge (for the 1830 fire no fewer than 11 tenders came from Cambridge). There was no mains water supply until 1912, so water had to come from wells and the ponds

at Fen End, the Green, Rampton End and Parsons Pond at the Over crossroads. Today there are still nine thatched houses in the village on High Street, George Street, Church Street, Silver Street and the Green.

New Trades

Another consequence of expansion was the arrival of specialist trades and craftsmen to support it. During the century, the village records show the establishment of blacksmiths, stonemasons, bricklayers, thatchers, glaziers, carpenters, sawyers, plumbers, harness-makers, coopers, wheelwrights, tailors, shoe and boot makers, osier basket makers, a tinman and even a watchmaker. Of course, there were also shops and stalls – drapers, butchers, bakers, grocers, fruiterers and a tailor.

By 1850 Willingham had become a thriving, self-sufficient small town of 1,600. A further indication of this was the even more rapid growth of what we would now describe as the hospitality industry of inns, pubs and ale-houses – of which more next time.

Alan Fawcitt

Next time: Victorian Willingham – Inns, Pubs and Ale Houses

Willingham Photography Club

Under current conditions, we are not meeting in person, but we continue to aim to learn more about photography and to enjoy ourselves.

There is a monthly assignment and photographs can be submitted online for consideration and feedback from our resident professional photographer.

The theme for March 2021 is *Round and/or Circular* and photographs may be submitted via www.willinghamphotoclub.org.uk and the link to the Virtual Assignments Google Drive.

All photographs should be submitted by **15 March**. We cordially invite anyone who enjoys photography to get in touch and see what is on offer.

Your expertise level does not matter; nor does the nature of your camera.

The membership cost is £20 for 6 months with the first month free of charge, however, subscriptions have been deferred at the current time.

If you have any further questions, please contact Steve Harding 07595 668161.

In the meantime, do have a look at our website on www.willinghamphotoclub.org.uk.



WILLINGHAM SURGERY & LONGSTANTON BRANCH SURGERY

Reception Tel: Willingham 01954 260230 Longstanton 207600 Dispensary 207602

District Nurse Team: 01223 726469 Option 2 Health Visitors: 0300 029 50 50

Out of hours cover: Ring 111 Website: www.willinghammedicalpractice.nhs.uk

**A&E is not an alternative to a GP appointment.
If we are closed, please call 111.**

Help Us to Help You – Busy Service

All NHS services are under severe pressure at the moment, as we look after increasing numbers of patients who are sick with COVID-19 and other deteriorating conditions in the community. We are also delivering the huge and vitally important COVID-19 vaccination programme. Please do not contact us regarding a vaccine, we will contact you.

So that we can focus on these really important issues, we will understandably be prioritising urgent care. This means that when you contact us, we may have an initial conversation with you to understand how urgent your health needs are.

If you have an issue that is not urgent (for example attending for a routine blood test), you may have to wait longer than usual until you can be dealt with. However, do please make sure that you continue to get in touch with us if you need to. This is particularly important if:

- your problem is genuinely urgent
- you have a long term condition that is getting worse
- you are worried about symptoms that might indicate cancer

Please also remember – you can call NHS 111 for urgent concerns and 999 for serious emergencies and that our local pharmacist can help with minor complaints.

For adults with mental health problems, including depression and anxiety, you can refer yourself directly to the local wellbeing service, via 0300 300 0055. If you are experiencing a mental health crisis, contact the First Response Service by calling 111 and select option 2 (in Wisbech call 111, select option 1 and ask to be put through to the First Response Service).

The Cambridgeshire County Council has a range of support and information to help in times of urgent need. To access these please telephone 0345 045 5202 – 8 am – 6 pm weekdays and 9 am – 1 pm on Saturdays. Outside office hours if someone is in danger telephone 01733 234724. In an emergency, call 999. Also see www.cambridgeshire.gov.uk/adults.

Thank you very much for helping us all manage under these very difficult circumstances.

Magpas Donations

In the absence of the Lucky Squares raffle last Christmas, the practice requested donations to Magpas Air Ambulance. We are delighted to announce we raised £100.50 via our 'Just Giving' page. Thank you to all those that donated. Let's hope Lucky Squares will return in Christmas 2021!

WILLINGHAM SURGERY NORMAL OPENING HOURS

Monday	8 30 – 1 00	2 30 – 6 00
Appointments	8 30 – 11 00	3 00 – 6 00
Tuesday	8 30 – 1 00	2 00 – 7 00
Appointments	8 30 – 11 00	4 30 – 7 00
Ante Natal/Baby Clinic		2 00 – 4 00
Wednesday	8 30 – 1 00	2 00 – 6 00
Appointments	8 30 – 11 00	3 00 – 5 30
Thursday	8 30 – 1 00	2 00 – 6 00
Appointments	8 30 – 11 00	3 00 – 5 00
Friday	8 30 – 1 00	2 00 – 6 00
Appointments	8 30 – 11 00	3 00 – 5 30
Emergencies		4 00 – 6 00

WILLINGHAM PHARMACY Tel: 01954 261787 NORMAL OPENING HOURS

Monday	8 30 – 1 00	2 30 – 6 00
Tuesday	8 30 – 1 00	2 00 – 7 00
Wednesday	8 30 – 1 00	2 00 – 6 00
Thursday	8 30 – 1 00	2 00 – 6 00
Friday	8 30 – 1 00	2 00 – 6 00

Carers' Meeting

Due to the pandemic, the carers' meetings are still currently postponed until further notice. They will be reinstated as soon as it is safe to do so. In the meantime, we would like to continue to support carers in our local community in any way possible. If you are a carer for someone and need advice and financial or emotional support, please contact Sue Lawson at susan.lawson7@nhs.net or 01954 260230.

Lisa Smith – Assistant Practice Manager

Basketball – Planning a New Local Club

There is an opportunity to set up a new local Basketball Club for both junior and senior players, based in Northstowe but open to members from Willingham and the neighbouring villages. We are planning to start basketball training and coaching sessions as soon as current restrictions are lifted. Currently we expect basketball sessions, run by qualified Coaches, to be held every Thursday and Friday, following COVID-19 safe protocols recommended by Basketball England.

Whether you want your children to experience another sport locally, to play yourself or to help a local community group in some capacity, we encourage you to register your interest by email now to northstowe@fastbreakbasketball.co.uk as this will allow us to plan our programmes for when sessions can be started.

Navid

Willingham Sustainability Group

The Willingham Sustainability Group is a sub-group of Willingham Action Group. We have been created to focus on sustainability issues and to raise awareness in the village. To date, we have focussed on plastics, recycling and food, but are hoping to expand to cover energy, biodiversity, wellness and more.

We have had a busy and exciting few months, here is a summary of some of the things we have been up to:

- We have some new members who recently joined our group and they have brought fresh ideas and a flurry of activity.
- We have met (virtually) with the two Parish Counsellors leading on sustainability for Willingham. It was a great meeting with lots of ideas shared.
- A Google Group has been created for anyone who signed up to the Plastic Pledge. Joining this group enables members to share tips on becoming more sustainable. We have also sent our first newsletter to the group with articles related to plastic or recycling.
- Our first external guest, Jonathan Crisp who is Cambridgeshire County Council's recycling Education Manager, joined us over Zoom in February to talk all things recycling. We will be sharing information from this event in the coming months.

We are in the process of setting up a new group looking at environmental issues around food production and consumption

How Can You Help?

There are many ways you can help, here are a few to get you started:

- Volunteer for the Willingham Sustainability Group. If you are wanting to make a positive difference in your local community then get in touch at willinghamsustainability@gmail.com.
- Join the 30+ local families who have taken the plastics pledge – to reduce plastic use and waste! Taking the pledge means you will automatically be entered into a prize draw and have the option to become part of our Google group. Email us at willinghamsustainability@gmail.com to take the pledge.
- Raise your awareness – the Willingham Life website has a number of articles on a range of topics from recycling to buying local food. South Cambridgeshire District Council are also running a series of free webinars to mark Climate and Environmental Fortnight 2021 – more information can be found on the District Council website.
- Shop at refill stations – there are a number of refill stations popping up in villages and towns nearby. Refill stations are a great way to reduce plastic too!
- Try Meat Free Monday and buy local! Again, there is more information on Willingham Life website.

Alex Mueller
Willingham Sustainability Group

Gardening Club

Over the Garden Fence

Thinking Ahead – While browsing the seed catalogues, try to plan for a garden which will still look good in September and October. With our increasingly mild autumns, these months can be a lovely time to sit out. Look for autumn-flowering perennials and annuals that will flower until the frosts.

Container / Potted Plants – Gardening Terms

Top-Dressing Container plants will thank you for being top-dressed in the next few weeks. Scrape off as much of the old compost as possible. Top up with fresh compost and add a slow-release fertiliser, such as blood, fish and bone or seaweed. This should keep plants fed for up to six months.

Potting On Potted plants may need periodic potting on to accommodate their growth and replenish the compost. The best time to pot on is at the start of the growing season. Never pot on a dormant plant. Ensure the root ball is completely moist so that it comes easily out of its pot without damaging the roots. Put fresh compost in the new pot until the plant is positioned at the same depth as before, with space allowed for watering. Remove any damaged roots. Check that the roots are spread out and the plant centred, fill with more compost and firm gently. Water, but do not feed for four to six weeks so that it will send out roots into the compost in search of food. Keep the plant out of direct sunlight for a few days.

Re-Potting If a plant is in the largest available container, has grown to its full size, or is very slow-growing, re-pot it into the same size pot to renew the compost. Take the plant out of the pot, remove as much of the old compost as possible. Prune out old and damaged roots and even cut back some of the root ball before re-potting the plant in fresh compost.

Weeds and Seeds

It is always discouraging when new weeds germinate, but timely intervention can save the day. Old gardeners used to say, 'Hoe them before you see them'; develop a habit of looking for those first green shoots of weed leaves, then hoe, rake or scruff the surface whilst they are still tiny. It is so much quicker than hand weeding, often killing hundreds of potential weeds in a few minutes; two strikes in spring will set you up for an easy summer. Early weeds such as bitter cress and groundsel will germinate and grow fast in the mild spells over the next few weeks. Tackle these as soon as they appear with hoe or rake. Another benefit of this 'little and often' approach is that you, the gardener, stay more involved. Go hunting for weeds and you'll soon spot other plants in need of attention – and that is good gardening.

Garden Planning

Sniff out a Plant Walk around your garden and plan to add plants for winter scent, near a path you use every day. Lots of these plants such as *Daphnes*, *Viburnums*, *Sarcococca* and Winter Sweet are shade tolerant. If you have room for a 2m high shrub, try *Lonicera Purpusii* (Winter Honeysuckle) with its magnificent scent of Pepper, Jasmine and Stephanotis.

Gardening Jobs for March

- Plant shallots, onion sets and early potatoes.
- Plant summer-flowering bulbs.
- Top dress containers with fresh compost.
- Protect new spring shoots from slugs.
- Mow the lawn on dry days (if needed).
- Cut back *Cornus* (dogwood) and *Salix* (willow) grown for colourful winter stems.
- Hoe and mulch weeds to keep them under control early.
- Start feeding fish and using the pond fountain; remove pond heaters.
- Prune bush and climbing roses.

Carol Bailey



WE'RE HIRING!
Contact us for permanent
or subcontract vacancies

**we've got your home
improvements covered**

PLUMBING & HEATING

- ▶ fit a new boiler ◀
- ▶ upgrade your heating system ◀
- ▶ annual service for your boiler ◀

BUILDING SERVICES

- ▶ bathroom & kitchen installation ◀
- ▶ new build ◀
- ▶ home renovation ◀

call us on: **01954 782920**
or visit: **www.ijcbuildingservices.co.uk**



IJC is a family run Cambridgeshire business with over 30 years' experience.

We offer a comprehensive range of domestic and small commercial works across all forms of building, plumbing, heating and renewable services.

45 Viking Way, Bar Hill,
Cambridge, CB23 8EL

MOBILITY EQUIPMENT

**STAIRLIFTS, SCOOTERS, WHEELCHAIRS,
RISING CHAIRS, BEDS, WALKERS, TOILET &
BATHING AIDS, KITCHEN & HOUSEHOLD
AIDS, CONTINENCE CARE, CUSHIONS**

HOME VISITS AVAILABLE

**SCOTSDALES GARDEN
CENTRE,**

HORNINGSEA, CB25 9JG

Tel: 01223 863908

www.orchard-mobility.co.uk



Monday - Saturday 9.00-5.00

**Orchard
mobility centre**

**SME
funding
— UK —**

*Helping you to find the
right funding, right now.*

Do you need business finance?

Your local, independent specialist can help you to find the best deal to support your business and accelerate growth.

- Asset finance • Cashflow/Invoice finance
- Property finance • Unsecured loans

Trusted in the industry for over 30 years.

Authorised and regulated by the
Financial Conduct Authority - FRN 772970

For a free, no-obligation chat, contact us
today on 01223 848 844 or visit our website

www.smefunding.uk



Member of the National Association of Finance Brokers and registered with the Information Commissioner's Office (ZA209808) SME funding UK Ltd is a broker, not a lender and can introduce you to a number of finance providers based on your requirements and credit rating, we may receive a commission for such introductions. SME funding UK Ltd company number 10410655 registered in England.

Registered office: 14 Austin Friars, London, EC2N 2HE.

**YOUR HOME IS AT RISK IF YOU DO NOT KEEP UP REPAYMENTS ON
A MORTGAGE OR OTHER LOAN SECURED ON IT.**


**THE
HOUND DOG HOTEL**
Homely dog boarding in Willingham

Contact Mandy Booth

M: 07878561454

E: info@thehounddoghotel.co.uk

For more information and prices visit

www.thehounddoghotel.co.uk



**DOWN TO EARTH
ELECTRICAL LTD**

**info@down2electrics.co.uk
07709 084618**

A Willingham based company offering full electrical services



Beauty Specialist offering:

**All Face and Body Waxing | Tinting
LVL Lash Lift | Brow Lamination**



Based at in-home salon in Willingham, or mobile appointments available

www.cambridgebrowsandwaxing.com

01887 541659

instagram.com/cambridgebrowsandwaxing

FROM THE PARISH COUNCIL

www.WillinghamParishCouncil.gov.uk

Flooding and Drainage Issues in Willingham

Over recent weeks Willingham has experienced issues with flooding and sewage in parts of the village. The Parish Council has been liaising with the District and County Councils with regards to gullies and ditch clearance and has been advised that those in need of clearing will be dealt with as soon as possible. In addition, there has been frequent interaction with Anglian Water who believe they have resolved the issue of the sewage leak in Church Street and Green Street, although further leakages have come to light in other village locations.

The current sewage capacity, future maintenance and upgrade by Anglian Water are issues that need to be addressed. Our MP Lucy Frazer has also been made aware of our issues; the District Council Environmental Health team at South Cambridgeshire District Council have been contacted to liaise and resolve the problems as quickly as possible. We would encourage all residents experiencing problems with their foul water to contact Anglian Water directly as well. The February Council meeting was well attended by parishioners and the Council welcomed and appreciated their input. We are hopeful that now we have requested a multi-agency meeting between the Parish Council, Cambridgeshire County Council, South Cambridgeshire District Council and Anglian Water, we can start a discussion on how we can resolve this in the long term. The village will be updated via the website.

Community Plan

As described in the December edition of *Willingham News*, the 2008 Community Parish Plan is due to be revised and updated to show the needs arising from the changes within the parish. Such a Community Plan has no set content since it can reflect whatever the community identifies as important. Following the call for volunteers – ideally seeking a wide variety of individuals who could work together and focus on the village needs - we can now move forward and more will be published on this. It takes a lot of work at all levels so an army of helpers will be called for at different times and I am sure Willingham will step up as they did in 2008.

Outside Spaces

The arrival of our two sparkly new table tennis tables with their surrounding matting in the QE 11 Field is already a hit! Plans are going ahead for some bike shelters nearer the Pavilion, which will encourage outdoor enjoyment. Please follow any guidelines that are current as well as observing any requests that may be made. Thinking ahead, the football fields should not be used until the Council drain cleaning programme is completed and it is clear that the fields can cope with a resumption of ball games.

Last month more energy, time and parish money were spent

on making the Meadow Road village field a place we can appreciate. Fly-tipping and the heap of litter was cleared. Importantly, the commemorative oak trees there have been replanted, so we all hope this time they do well and provide a fitting avenue of trees for future generations to enjoy. On the southern side of the village the piece of land donated to the village will also be prepared to benefit us all; see more details on page 5.

Closer to home, our boundary hedges and trees that provide winter berries and seeds for birds will be needing attention and should be well trimmed. There are still a few that encroach on the footpaths; we would all be grateful if they could be chopped back so that we can walk around safely. The Council will be flailing the field hedges – also before nesting begins.

As we move into spring it will be hoped that we can begin to enjoy better weather and take advantage of our outdoor spaces. The first week of March is 'Food Waste Action Week': choosing each piece of fresh food as we need it would certainly make a difference. Considering our drive to achieve a better carbon footprint, not only would growing our own vegetables be a good way forward but making use of our local suppliers could reduce that carbon footprint - as well as supporting local businesses for our tasty, carefully selected food.

Parish Council Meetings and Elections

Meetings will continue to be held remotely using Zoom for the time being. Full Council meetings are held on the first Wednesday in the month starting at 7 30 pm, with agendas posted on the website as well as at the Public Hall and Library. We usually begin meetings with members of the public being able to speak briefly or asking questions, (agendas have the details).

Keep an eye out for any lifting of restrictions on the use of indoor facilities and use of the carefully cleaned public halls in the village. We are still unclear as to how or even if the elections will take place as planned on Thursday 6 May. However, we are assuming they will go ahead and the clerk is preparing the Ploughman Hall for 'COVID-19 friendly' accessibility for this event. It is an ideal venue to enable people to move through safely, but have your own pencil sharpened ready!

Council Office Details

Ploughman Hall, West Fen Road, Willingham

Tel: 01954 261027

Email clerk@willinghamparishcouncil.gov.uk

Opening hours: Monday – Thursday 10am – 1pm (closed bank holidays)

Clerk: Mrs Mandy Powell

D Law	Parish Council Chairman	cllr.law@willinghamparishcouncil.gov.uk	01954 202188
N Harris	Planning Committee Chairman	cllr.harris@willinghamparishcouncil.gov.uk	07792 611226
P King	Parish Council Vice Chair	cllr.pking@willinghamparishcouncil.gov.uk	01954 260780
L King	Leisure & Amenities – Lead Cllr	cllr.lking@willinghamparishcouncil.gov.uk	01954 260780
R Manning	Greens & Boundaries – Lead Cllr	cllr.manning@willinghamparishcouncil.gov.uk	01954 261235
B Mansfield	Cemetery – Lead Cllr	cllr.mansfield@willinghamparishcouncil.gov.uk	01954 261540
R Tassell	Halls – Lead Cllr	cllr.tassell@willinghamparishcouncil.gov.uk	07974 673836

Readers' Letters

Dear Editors

In your February issue Bruce Robjent, prompted by the news that the number of village Police Community Support Officers is to be cut, wrote about the absence of Police Officers in the village. He suggested that 'the last time a policeman was seen in the village' was during the Coronation celebrations.

I can, however, assure him that a policeman was definitely seen in the village at least 10 years after the Coronation, as he visited me! He knocked on our door, sometime after 10 pm one night in the Summer of 1963 to inform me that I was to report immediately to RAF Warboys, where I was stationed at the time, as part of a Royal Air Force Fighter Command Air Defence squadron.

He did seem to be a little worried and, before he left, asked me 'Is this the real thing?' Bearing in mind that the Cold War was still at its height, having nearly 'gone hot' the previous October, that was a fair question to ask! I assured him that it would more than likely be an exercise but, of course, I wouldn't know that until I got there to find out that it was an exercise.

Yours Sincerely

Martin Gorner

Dear Editors,

I would like to say a huge thank you to those responsible for the light display at the Station Road crossroads near the Porterhouse. As a key worker who regularly passes on the way home tired and drained, they are a real reminder and acknowledgement that it is all worthwhile. Thank you for brightening many people's journeys – literally!

Thank you,

Katy

Dear Editors

Local Flooding Issues

We found the session on the local flooding in the recent Parish Council meeting was very useful.

The comments by Tim Wotherspoon were especially helpful as they summarised the situation from a broad perspective. We understand the main issues to be:

1. The sewage/foul water system in Willingham is inadequate for the current number of houses/households.
2. When there are heavy rains and/or the water table is high, surface water is not able to drain into soak-aways and so surface water flows into sewers, further

overloading and sometimes blocking the sewage system.

3. With climate change we can anticipate higher levels of rainfall, especially in winter, leading to increased water flows from the land.

We agree with the finding of the meeting that all parties involved in water management should be brought together to tackle this and to improve the sewage infrastructure. It is desirable that independent water engineers are also involved to give expert opinion. An Action Plan and timetable are needed so that steps to address these issues can be monitored.

Additionally, we suggest the following actions be taken now:

1. Immediate clearance of water courses, drains and ditches to allow flow of surface water away from the village. Contractors should be hired to do this now.
2. Advising Anglian Water that independent actions by their contractors in one part of the village is causing flooding and damage in other parts of the village. They should be made liable for the resulting damage and compensate households.
3. Anglian Water senior managers should be held accountable for the incorrect information being passed to planning authorities about the status and capacity of the sewage system in Willingham. Anglian Water should be required to take responsibility for the considerable problems and damage for some households caused by inadequacies of the sewage system locally. They should be required to rectify the position by giving priority to upgrading the capacity of the sewage system to allow for current inadequacies and the anticipated expansion of the village.
4. All development in Willingham should cease until the sewage system is upgraded – (as proposed by Councillor Cook).
5. Open areas of land in elevated parts of the village should be considered for community use (e.g. football etc) instead of housing, as it can be anticipated that land in the flood plain will be under water or waterlogged during the winter.

We suggest that progress reports are provided at frequent intervals on the Parish Council website so that everyone can see what action is occurring.

Yours Sincerely

Tatiana Ruchinskaya Jeremy Sweet

County Councillor's Message

Scientists have been warning of the consequences of climate change for decades. One of the effects is hotter, drier summers and warmer, wetter winters. We can all agree that 2020 and 2021 so far seem to bear this out. There had already been 50% more rainfall than the annual average from September to November 2020. Add to that the third wettest consecutive couple of months since records began in 1850. The drainage infrastructure was not built to cope with this amount of water, in particular the gullies and road drains, as well as the sewerage systems operated by Anglian Water.

Levels in the Great Ouse were high throughout January and into February. All remediation measures were in place and all water flow routes were 'open'. However, the tributary streams and brooks were having difficulty discharging into the river as surface water run-off from adjoining fields was keeping their levels high not allowing the usual flows out from the land. The results have been road flooding, sewage discharge, mechanical equipment strains, and many instances of standing water.

After another 11 mm of rainfall over the first weekend of February, the ground reached a peak of saturation. This means that further rainfall just runs straight off the land, filling the ditches immediately and spilling over on to roads, driveways and gardens – in the worst cases into sheds, garages, businesses and homes as well.

A frequent complication is surcharge of foul water drains by surface water. This in turn overwhelms sewage pumping stations, causing sink, bath, shower and toilet drains to back up. This is disgusting, inconvenient and a potential health hazard.

Anglian Water say that they are operating at maximum capacity to clear the 11,000 calls they have received (five times the usual number). Their usual fleet of 40 tankers has been augmented to 120, utilising every available vehicle from all over the country. Anglian Water usually discharges a million litres a day, but in the first week of February this had risen to five million litres a day, with consequential wear and tear on assets like pumping stations.

As chair of the Cambridgeshire and Peterborough Flood and Water Partnership I have been coordinating over 700 reports of flooding since just before Christmas. We have been mapping these according to location, source of the water (whether river, surface, ground or sewer), and severity – in particular whether homes were flooded internally. Every incident that resulted in water getting into someone's house will be investigated to identify the causes. (There is rarely a simple answer.)

Out of the three hundred towns and villages across Cambridgeshire there is only one where I have demanded immediate action by Anglian Water – and that was Willingham, where I regarded raw sewage on the open space of The Green as a public health emergency. I am glad they dealt with that issue straight away (and our highways team subsequently drained the residual lake there). We have been made aware of chronic problems, especially relating to recent housing developments, which have been exacerbated by recent rainfall, and we will be calling a multi-agency meeting to resolve them.

Tim Wotherspoon

Census 2021

This month households across Cambridgeshire will be asked to take part in Census 2021.

The Office for National Statistics has reviewed the Census plans in light of COVID-19 and is confident that everyone will be able to provide their information safely and securely. The Census is a once-in-a-decade survey that gives us the most accurate estimate of all the people and households in England and Wales. It has been carried out every decade since 1801, with the exception of 1941.

It will be the first one to be run predominantly online and households will receive a letter with a unique access code, allowing them to complete the questionnaire on their computers, phones or tablets.

Iain Bell, the Deputy National Statistician writes 'A successful Census will ensure everyone, from local government to charities, can put services and funding in the places where they are most needed. This could mean things like doctors' surgeries, schools and new transport routes. That's why it is so important everyone takes part and we have made it easier for people to do so online on any device, with help and paper questionnaires for those that need them.'

Census day will be on **21 March**, but households across the country will receive letters with online codes allowing them to take part from early March. The Census will include questions about your age, work, health, education, household size and ethnicity. For the first time, there will be a question asking people whether they have served in the armed forces, as well as voluntary questions for those aged 16 and over on sexual orientation and gender identity.

Results will be available within 12 months, although personal records will be locked away for 100 years, kept safe for future generations. For more information about the Census and how to get involved see www.census.gov.uk.

The above information was supplied by the Cambridgeshire Library Service.

Poem for March

I am waiting for Spring to appear
and I'm sure that it's almost here.
The snowdrops in gardens so white
tell us nature is doing it right.

The first day of Spring is a chance
for hares and their babies to dance.
So welcome the Spring with your heart
For I know it will bring a new start.

Christine Lacey



Andy Tibbett & Sons
Painting & Decorating

- * All internal & external work carried out to a high standard
- * Trade references can be supplied
- * Very competitive pricing
- * A prompt & polite service from a name you can trust

Telephone: 01954 230810
Mobile: 07717 493723 Email: andrewtibbett@hotmail.co.uk




ARTISAN LANDSCAPES
Est. 1988

www.artisanlandscape.co.uk

Paving, Fencing, Pergolas, Ponds, Pruning, Structures etc

jonathan_ashman@hotmail.com
07768 821354

 **Jonathan Ashman Artisan Landscapes**

A.R.Aspinall & Sons Ltd
Tel: 01954 234966 Fax: 01954 234967
Unit 11 Norman Way Ind Est, Over, Cambs, CB24 5QE.
www.araspinall.co.uk

WE STOCK A FANTASTIC RANGE OF NATURAL PAVING PRODUCTS COME AND VISIT OUR NEW DISPLAY AREA.

Bricks Concrete Blocks Lintels Cement Sand
Gravel Hardcore Timber Fixings Footwear
Decorating Supplies Industrial clothing Paving Slabs

Opening times: Mon to Fri 7.30am – 5pm



WE OFFER A FREE LOCAL DELIVERY SERVICE!

Buttercups
CHILDCARE LTD

Bar Hill Day Nursery

Provision for children aged 4 months to 5 years.
Ofsted Rated Good.

Working towards accreditation with The Curiosity Approach.
For enquiries, contact info@buttercupchildcareltd.co.uk
www.buttercupchildcareltd.co.uk



David Wake
Carpentry and Joinery

- Fitted Kitchens • Specialised Joinery
- Doors and windows • Property repairs

Office: 01954 260678 Mobile: 07836 290112

THIS MAGAZINE WAS PRINTED BY

 **Target Print Ltd**
DIGITAL AND LITHO PRINTING



Quality printing
to fit your budget

Newsletters • Brochures • Flyers • Letterheads • Compliment Slips • Menus
NCR/Carbonless Sets & Pads • Manuals • Business Cards • Postcards • Labels
Booklets • Posters • Roller Banners • Envelopes • Wedding Stationery
Continuous Stationery • Invitations • Folders • and much more ...

Broad Lane, Cottenham, Cambridge CB24 8SW
Telephone: **01954 251189**
Email: print@targetprint.org
Web: www.targetprint.org

Ward Solutions Ltd

We specialise in the installation of flue lining systems, wood burner's and fireplaces, 15 years experience.

We can supply you with a stove or install one supplied by you.

Other services include- chimney re pointing, smoke tests, And fitting pots and cowls.

HETAS registered

Call or email for a free survey
0800 357 92 91
01954 200 021
info@wardsolutions.co.uk






ACA
Heating & Plumbing

46 Church St
Willingham
Cambridge
CB24 5HT

Gas and oil boiler servicing, breakdowns
Boiler upgrades and heating installations
Bathroom and Wetroom installations
Un-vented cylinder installations/servicing
All types of plumbing and heating works undertaken
Local friendly services with over 14 years experience




Andrew Leahy mobile: 07833 204499
Email: andy@acaplumbing.co.uk
www.acaplumbing.co.uk

South Cambridgeshire District Council (SCDC)

District Councillors Report

Doubling Nature

SCDC has just announced a high-level strategy for 'Doubling Nature' in South Cambridgeshire, setting out an approach to increasing wildlife-rich habitats, tree canopies and improving access to green spaces. The Strategy will see the Council working with communities and businesses to protect and enhance the district's natural capital, as well as taking action on its own estate. In summary, the aims are to give nature space, to help to reverse declines in habitat and species and to provide more areas for people to enjoy nature and benefit their health and wellbeing, with the aim to:

- improve the quality of air
- help to manage water for nature
- create more resilience to climate change
- boost the economy of the district.

While it directly controls only a tiny area of land in the district, the Council aspires to be as an exemplar to others through nature enhancing measures such as tree planting and reseeded suitable green spaces with wildflowers.

Flooding

Since the end of December, we have endured one of the wettest periods in 150 years, and this has tested the local drainage infrastructure to the limit and beyond. Also sorely tested has been the ability of the water utility and drainage authorities to cope with the numerous emergencies across the district. Some sewers and septic tanks have been unable to cope and their contents have contaminated some of the floodwater, leading to the involvement of South Cambridgeshire District Council Environmental Health Officers. The causes (apart from the obvious - heavy rainfall) will be considered by all flood management authorities and at the time of writing a meeting was being arranged by the Parish Council. Reports will follow.

Climate and Environment Fortnight

Commencing on **Monday 22 February**, South Cambridgeshire District Council are marking Climate and Environment Fortnight 2021 with a series of webinars to help people think about how to live more sustainably, reduce carbon emissions and in turn help tackle climate change. All are welcome to join any of these free online events: www.scambs.gov.uk/nature-and-climate-change/climate-and-environment-fortnight-2021-events.

COVID-19 Related Matters

A reminder that information about South Cambridgeshire's response to coronavirus can be found on the regularly updated coronavirus pages on the SCDC website: www.scambs.gov.uk/coronavirus.

The Council is sending out a Coronavirus-related letter directly to all households in South Cambridgeshire in the next couple of weeks. This will contain details of the financial and practical support available to people who need to self-isolate. This is to help ensure that residents

feel there is enough local assistance available to assist them to comply with critical self-isolation.

'Stand Firm' Campaign

In an effort to counter complacency about COVID-19 and false information (that the pandemic is a hoax, or overblown) 'Stand Firm' is a new multi-media campaign for Cambridgeshire and Peterborough, which focuses on the personal testimonies of local people who have been impacted by the virus. These stories work on the premise that by making the virus and its impacts tangible and local, you make the threat real and inspire others to follow the rules by use of the narrative 'stand firm'.

Resources for Raising Awareness about Vaccine Fraud

Criminals are using the coronavirus vaccine as a way to target the public by tricking them to hand over cash or financial details. They are sending convincing-looking text messages telling people they are eligible for the vaccine or are phoning people directly pretending to be from the NHS or their local pharmacy. The Government has developed resources, including posters and guides, to help councils with their work to communicate to groups and networks the importance of staying alert to vaccine fraud: www.gov.uk/government/publications/resources-for-raising-awareness-about-vaccine-fraud.

COVID-19 Support for Businesses in Lockdown 2

As of Friday 29 January the business grants made by South Cambridgeshire District Council during the 'second lockdown' were:

- £978,853 paid out for Local Restrictions Support Grants to 801 businesses
- £242,410 Additional Restrictions Grant to 155 businesses
- £188,502 Hardship grant to 79 businesses
- £37,000 to 37 wet-led pub businesses
- Total £1,446,765 to date (including some payments approved but pending)

Bill Handley and Dawn Percival

Cllr.handley@scambs.gov.uk 01954 200287

Cllr.percival@scambs.gov.uk 07948 683599

Crossword Answers:

Across: 1 Terror, 4 Basic, 7 Muscle, 8 Banana, 9 Spot, 10 Attempts, 12 Destination, 17 Alliance, 19 Crux, 20 Garage, 21 Laughs, 22 Niece, 23 Freely.

Down: 1 Thumped, 2 Recites, 3 Operation, 4 Blaze, 5 Shampoo, 6 Coarse, 11 Traveller, 13 Enlarge, 14 Include, 15 Naughty, 16 Jargon, 18 Angle.

Book Quiz Answers:

1 John Gresham, 2 Audrey Niffenegger, 3 H G Wells, 4 Mark Haddon, 5 Gabriel Garcia Marquez, 6 Charles Dickens, 7 Edgar Rice Burroughs, 8 Anthony Powell, 9. Stephen Hawking, 10. Madeleine L'Engle.

CAMBRIDGESHIRE BATHROOMS

Dream - DESIGN - ACHIEVE

- Premium Brands
- 3D Bathroom Design Service
- 2 Extensive Showrooms
- Technical Advice Throughout
- In House Delivery Team

Unit 1
Willow Road
The Lakes Business Park
Fenstanton
Cambridgeshire
PE28 9RB

01480 598 750

Mon - Sat - 9am to 5pm
cambridgeshirebathrooms.co.uk



3D Bathroom
DESIGN
Service



R. A. Miller Plumbing and Domestic Heating

Fenside, 71 Willingham Road, Over
Cambridge CB24 5PE

Tel: 01954 203277 Mob: 07831 853885
Email: robert.miller@btworld.com

All plumbing work undertaken

- New boiler replacement and installation with free quotation
- GAS boiler and GAS fire servicing - Landlord Certificates
- Heating problems - Diagnosis and rectification
- General plumbing - taps, washers, pipe work, showers, etc.
- Full and partial Bathroom installation work

For a reliable and professional local service

Robert Miller

Office 01954 203277

Mobile 07831 853885



Willingham Post Office

15 High Street, Willingham CB24 5ES

01954 260331

Mon - Fri 08:30 - 18:00 Sat 08:30 - 15:30

- All mail services, including special delivery
- Travel Currency, Travel Money Cards, Travel Insurance and MoneyGram
- Passport Photographs, Passport Check and Send Service
- Document Certification Service
- International Driving Permits
- Vehicle Tax and Bill payments
- Financial Products - Insurance, ISA, Growth Bonds, Credit Cards and much more
- Broad Band and Phone Packages, Phone Top-Ups
- Free Cash withdrawals for most major Banks as well as Cash & Cheque Deposits
- Photocopying and Laminating Service
- Great range of Greeting Cards, Stationery and Pack & Post Items



AJ Carpentry

Domestic & Commercial Carpentry & Building Services



Your local, family run business specialising in
transforming project dreams into reality!

Extensions - Refurbishments - Conversions -
Kitchens - Flooring - Electrical work - Bespoke
furniture - AND SO MUCH MORE!

07989 341724



01954 202267

www.ajcarpentry.co.uk

Highgate Country Stores Ltd



Over Road, Willingham, Cambridge, CB24 5EU

- High Quality Pet Food and Accessories
- Poultry and Farm Animal Feed and Equipment
- Horse Feed, Equipment and Bedding
- Riding Accessories
- Fuel - Flo Gas, Logs, Kindling and Coal



Open 7 Days a week

www.highgatecountrystore.co.uk Telephone: 01954 260798

info@highgatecountrystore.co.uk

Highgate Butchers



We sell locally sourced quality meat
and poultry enhanced by a wealth of
butchery experience from our friendly and
knowledgeable staff.

Come and see for yourself our great range of beef, Lamb, Pork,
Poultry and Game products, not forgetting our 28 day aged beef.

Opening times: Mon: Closed / Tue-Sat: 8-5.30 / Sun: 9-2
Tel: 01954 260444 highgatebutchers@gmail.com

CELEBRATION DAYS IN MARCH

1 - 31 March	<p>MARIE CURIE GREAT DAFFODIL APPEAL – Marie Curie nurses have been on the front line of the pandemic providing vital care. At the same time they have been unable to fundraise as normal. mariecurie.org.uk</p> <p>WALKOVER CANCER MONTH – Join thousands of supporters walking 10,000 steps every day in March to raise money for lifesaving research. Sign up at cancerresearchuk.org.</p>
1 - 7 March	BRITISH PIE WEEK – We are a nation of pie lovers and according to the most common internet search results, here's our top ten: Cottage Pie, Fish Pie, Shepherd's Pie, Chicken & Leek Pie, Steak & Ale Pie, Meat & Potato Pie, Pork Pie, Steak & Kidney Pie, Corned Beef Pie and Blackberry & Apple Pie.
1 March	ST DAVID'S DAY or DYDD GWYL DEWI in Welsh. Today many Welsh people make a stew from lamb and leeks called Cawl.
3 March	WORLD WILDLIFE DAY's theme this year is <i>Sustaining All Life on Earth</i> . With increasing numbers of endangered and extinct species, the UN wants to educate people on how to conserve the planet for future generations.
4 March	WORLD BOOK DAY is marked in over 100 countries. It is an UNESCO initiative to celebrate books and reading, especially among children.
8 March	INTERNATIONAL WOMEN'S DAY's theme for 2021 is <i>Women in Leadership, Achieving an Equal Future in a COVID-19 World</i> . unwomen.org
9 March	BARBIE DAY – Barbie's full name is Barbara Millicent Roberts. Today, in 1959, she premiered at New York's Toy Fair. She was the first doll to have adult features; over a billion Barbie dolls have been sold worldwide in over 150 countries.
13 March	KEN DAY celebrates the occasion in 1961 when Barbie's long term on-off boyfriend, Ken Carson, first appeared.
14 March	MOTHERING SUNDAY falls on the fourth Sunday in Lent, three weeks before Easter. Today is also known as SIMNEL SUNDAY ; traditionally Simnel cakes were baked to celebrate the family reunion during the austerity of Lent.
16 March	PANDA DAY – Pandas are fascinating animals for many reasons: they can get through 12 kilos of bamboo a day, they are born pink, measure about 15 cm, are blind for the first six to eight weeks, they don't hibernate, are shy and prefer to live alone.
17 March	ST PATRICK'S DAY is a religious and cultural public holiday in Ireland. The Irish wear a shamrock today because, according to legend, St Patrick used its three leaves to explain the Holy Trinity.
19 March	RED NOSE DAY – Since its launch in 1988, Comic Relief has raised money to support people living incredibly tough lives through humour and stories of hope. This year you can wear the first ever 100% plastic-free Red Nose. comicrelief.com
24 March	WORLD TB DAY builds public awareness that TB today remains an epidemic in much of the world. It is the cause of death of nearly one and a half million people each year, mostly in developing countries. stoptb.org
25 March	SLAVERY REMEMBRANCE DAY – For over 400 years, more than 15 million men, women and children were the victims of the transatlantic slave trade.
28 March	<p>BRITISH SUMMERTIME begins at 1 am today and ends at 2 am on 31 October.</p> <p>PALM SUNDAY commemorates the entrance of Christ into Jerusalem when palm branches were placed in his path. It marks the beginning of Holy Week, the final week of Lent.</p>
29 March	WORLD PIANO DAY takes place on the 88 th day of the year; a standard piano has 88 keys. pianoday.org
31 March	BUNSEN BURNER DAY honours the birthday of Robert von Bunsen. A Bunsen burner is a common piece of laboratory equipment that produces a single open gas flame that can be used for heating, sterilisation and combustion.



Our salon offers all aspects of hairdressing including wedding hair with a personal touch. We can come to you on your special day.

Tel: 01954 260224

EDGAR FARRELL

CONSTRUCTION

WWW.EDGARFARRELL.CO.UK

**NEW BUILDS/ EXTENSIONS/ CONVERSIONS
BATHROOM & KITCHEN FITTING**

EDGARFARRELL2@YAHOO.CO.UK 07919800895



Home & Garden Handyman Services

- ❖ QUALITY, insured workmanship at very competitive pricing.
- ❖ Internal and external works undertaken. No job is too small.
- ❖ Experience with vulnerable people.
- ❖ ENHANCED DBS security checked.
- ❖ Discount schemes offered.

Reliable.

Honest.

Local.

Friendly

M: 07562 212056 T: 01487 842968

E: hello@epshomeworks.co.uk

W: epshomeworks.co.uk



Becky's Fitness

Becky's Fitness on Facebook – drop me a message to find out more.

All Classes being held on-line Via Facebook Live, up to 10 classes per week for Just £20 per month.

Classes include Fitness Pilates, HiIT, Aerobics, Body conditioning & Cardio Dance

07905097961
becky@beckysfitness.co.uk
FIRST WEEK FREE



LETTINGS & PROPERTY MANAGEMENT

Tel: 01954 260200 e-mail: enquiries@cpbm.co.uk

Website : www.cambspropertybureau.co.uk

Kirsty Cornwell Coaching

NLP Practitioner, Ollie Coach and Hypnotherapist

Helping children and adults to manage their emotions
Contact for services and appointments available

www.kirstycornwellcoaching.co.uk

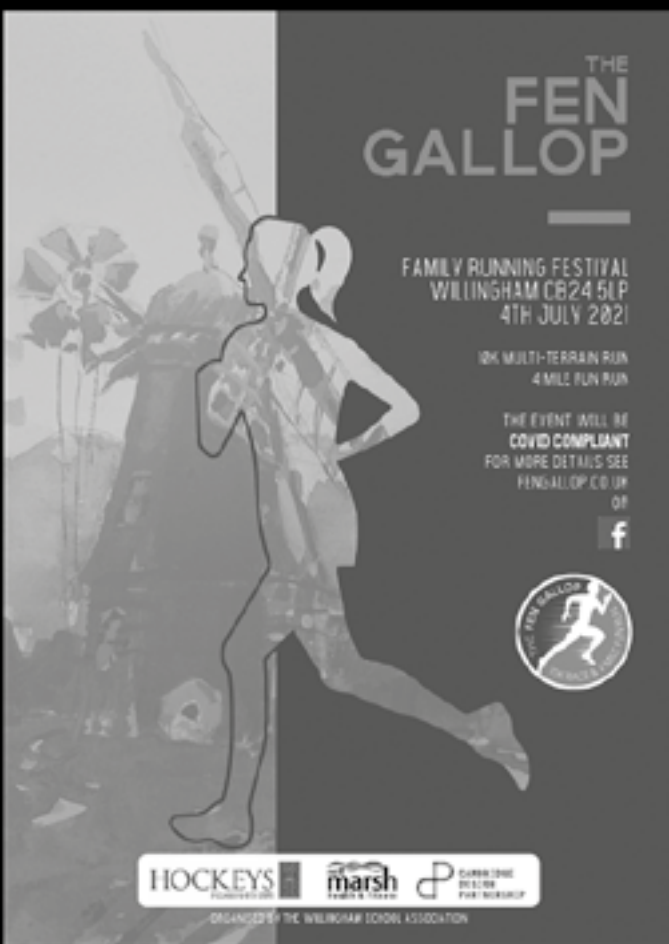
The Coaching Cabin, 59 Church Street, Willingham, Cambridge CB24 5LQ

Mobile: 07990610517

Email: kirstycornwell16@gmail.com



PROFESSIONAL
HYPNOTHERAPY
PRACTITIONERS
ASSOCIATION




THE FEN GALLOP

FAMILY RUNNING FESTIVAL
WILLINGHAM CB24 5LP
4TH JULY 2021

10K MULTI-TERRAIN RUN
4 MILE FUN RUN

THE EVENT WILL BE
COVID COMPLIANT
FOR MORE DETAILS SEE
FENGALLOP.CO.UK
OR
f



HOCKEYS FOUNDATION marsh CHEROKEE RACING

ORGANISED BY THE WILLINGHAM IDOL ASSOCIATION

JASON KIRBY

Professional Painting
& Decorating Ltd

A Professional Service
from Start to Finish

Tel: 01954 211775

www.jasonkirbyltd.co.uk



Stay safe,

observe social distancing and
wash hands regularly



The Complete Gas Heating and Plumbing Company

Plumbing • Heating • Gas • Bathrooms
Water Softeners • Property Maintenance

Tel: 01954 204044 • Web: www.entiregroup.co.uk
Email: service@entiregroup.co.uk

HOME HELP for SENIOR CITIZENS

Do you know someone in need of some Help at Home?

* Cleaning * Meal preparation * Company * Errands
* Ironing * Bed Changing * Laundry

Same Home Help – Same Time – Same Day

*All Staff are DBS checked, trained and reference
checked*

Call for more information on 01480 383340

The Home Help Company



elglaze *Your home. Our heritage.*
est. 1983

Windows - Doors - Conservatories & more



Casement
Windows



Composite
Doors



Bespoke
Conservatories



Sash
Windows

CONSERVATION
AREA APPROVED

QUICK ESTIMATE



www.elglaze.co.uk/estimate

01954 770770 | www.elglaze.co.uk

FENSA MTC REGISTERED



Willingham Mini Skips
Mini Digger Hire (with driver)

We provide a quality service at
competitive prices to meet
your personal requirements

For further information telephone
01954 261119 or 07774 197960

YOUR PERSONAL WEALTH.
OUR PERSONAL RESPONSIBILITY.

At Tilney, we have been helping clients achieve their financial goals for more than 180 years. Whether you are saving for retirement, want to pass on your wealth or would like to have your investments managed by an expert, we can do the same for you.

To find out how we can help you, please call our Cambridge office on 01223 452 840 or email neil.trickett@tilney.co.uk for Investment Management or laura.ingram@tilney.co.uk for Financial Planning.

Investments carry risk –
investors can lose money investing.
tilney.co.uk

TILNEY

PLANNING | ADVISING | INVESTING

VILLAGE DIRECTORY

Please notify *Willingham News* of any changes

Council	Parish Council (<i>See full details on page 14</i>)		01954 261027
	County Councillor	Tim Wotherspoon	timothy.wotherspoon@cambridgeshire.gov.uk
	District Councillor	Dawn Percival	07948 683599 / cllr.percival@scambs.gov.uk
	District Councillor	Bill Handley	01954 200287 / cllr.handley@scambs.gov.uk
Services	Police		101
	Surgery		01954 260230
	Dispensary for repeat prescription requests		01954 207602
	Library		0345 045 5225
	Pharmacy		01954 261787
	Over Surgery		01954 231550
	Urgent Care Cambridgeshire		111
	Community Warden	Joanne Twinn	wardens@ageukcap.org.uk 07812 496002
Schools	Primary School	Mr Dave Morel	01954 283030
	Willingham Out Of School Club (3–6 pm only)	Mrs M Lenk	01954 283033
	School Governors Chairperson	Katy Stevenson	chair@willingham.cambs.sch.uk
	School Association	c/o school	01954 283030
	British School Trust	Ray Croucher	01954 261113
Children	Beavers, Cubs and Scouts	Matt Haigh	adventure@1stwillinghamscoutgroup.org.uk
	Honeypot Pre-School (term-time only)	Mrs Kate Van Dort	01954 201567
	Koala Kidz	Mrs Edith Jeffrey	01954 260046
	Guides and Rangers	Lynn McGoff	willinghamguides@hotmail.co.uk
	Ladybird Borland's School Of Dance	Mrs L Borland	01954 203347
	Messy Church	Margaret Edney	07528 193858
	First Steps	Vicky Page	vickypage85@gmail.com
	TOPS (Baptist Church Toddlers Group)	Katy Gilbert	01954 261922
	Little Notes Music Group (0-4 years)	Lisa Adcock	07949 062360
	KFC Kid's Friday Club Years 1-6 (Baptist Church)	Lorriane Bald	01954 261189
Halls	Ploughman Hall Bookings	through Parish Council	01954 261027
	Wilford Furlong Centre		01954 261445
	The Octagon	Gillian Beal	admin@5folds.org.uk
	Baptist Bookings and Rentals	Emma Launchbury	01954 263108
	Willingham Social Club Bookings	Lynne Sadler	01954 260557
	Willingham Youth Centre bookings		willinghamsocialclub@gmail.com email: enquiries@willinghamyouthtrust.org
Local Representatives	Allotments	Sue Ayling	01954 260718
	Billavincea Lodge 8719	Mr M Scrivener	01480 413533
	Fen Edge Community Association	Eileen Wilson	chair@fenedge.co.uk
	Over & District Royal British Legion	Jane Matthews	07983 630265 overanddistrictrbl@yahoo.com
	OWLS Community Car Scheme	Lorraine Hunt	07505 254363
	Willingham Action Group (WAG)	Mike Tidball	01954 260647
	Willingham Combined Charities	Kassia Bunnett	k.bunnett@googlemail.com 07969 541095
	Willingham RBL Poppy Appeal Organiser	Graham Atherton	01954 260331
	Willingham Bee Group Chairman	Steve Smith	07795 215071
Clubs	Friends of Willingham Library (FOWL)		willinghamlibraryfriends@gmail.com
	Gardening Club	Mrs C Bailey	01954 260794
	WBC Youth Club (Baptist Church Years 7-9)	Bev Thomas	01954 789230
	Willingham Dance Club	Teresa Weston	willinghamdanceclub@gmail.com
	Willingham Social Club	Lynne Sadler	01954 260557 willinghamsocialclub@gmail.com
	Willingham Jam Club	Julian Eales	01954 201818
	Willingham Photography Club	Steve Harding	07595 668161
	Willingham Running Club	Monica Garcia	gcompass.monica@gmail.com
	Willingham Walkers	Mike Tidball	01954 260647
	Willingham Youth Club	Bonnie Twiss	bonnietwiss@me.com
	Women's Institute	Wendy Law	01954 202188
Sport	Angling	Colin Dodd	07773 719330
	Badminton	Sarah Custance	01954 202005
	Bowls Club	Ian Bissett (Sec)	ianbissett@gmail.com Willinghambowlsclubsec@gmail.com
	Cricket Club	Mr R Ambrose	01954 610113
	Cycling Club – www.willinghamwheels.com	Paul Knighton	07787 530394
	Ladies' Hockey	Teresa Hutchcraft	01954 260177
	Tennis Club	John Graham	01954 231968
	Willingham Diamonds Netball Club	Emma Byrom	01954 202481
	Willingham Running Club	Gerry Mears	07511 131645
	Willingham Sports Pavilion	through Parish Council	01954 261027
	Willingham Wolves (Boys & Girls Football)	Jamie Smith (Sec)	01954 261141
Churches	Mothers' Union	Mrs Sue Hayden	01954 260363
	Baptist Church	Emma Launchbury	01954 260538
	Methodists (Ministerial Contact)	Rev Simon Oliver	07554 202929
	Roman Catholic Priest	Rev Thomas J Walton	01480 462192
	Parish Church	Simon Gill	admin@5folds.org.uk 01954 230434



SPECIALISING IN THE
SALE OF HOMES IN
WILLINGHAM AND THE
SURROUNDING VILLAGES

HOCKEYS
ESTABLISHED 1885



Paying too much tax?
Paperwork a burden?
Accounts fee expensive?
Like a business review?

At **Uttridge Accounting** we understand your business and tax needs and provide a range of services to meet your requirements, including:

- Accounts Preparation
- Self Assessment
- Taxation Advice
- Business Start-ups
- Business Planning
- Payroll Services
- Online Accounting

For professional accounting expertise, attentive personal service and great value for money, contact us today.

UA Uttridge
ACCOUNTING
Chartered Certified Accountants

ACCA

01954 263000

info@uttridge-accounting.co.uk
www.uttridge-accounting.co.uk

Vintage
travel

ESTABLISHED
1990

Your Local
Travel
Company



**HANDPICKED
VILLAS WITH POOLS**

A selection of beautiful individual villas & houses with pools in tranquil settings & areas of traditional local culture.

Call for a brochure or to speak to one of our specialists **01954 261431**
or visit our website
vintagetravel.co.uk

GREECE • SPAIN • LANZAROTE • BALEARICS • PORTUGAL
TURKEY • FRANCE • ITALY • CROATIA • CYPRUS



Selling or Letting your Willingham home for the best price takes experience, skill and commitment.



...four office coverage helps, too!

Ensure your home gets the coverage it deserves.

Call Tylers.

01223 214400
hello@tylers.net
tylers.net

