

Willingham News

FREE TO EVERY HOME
village website: www.willinghamlife.org

willinghamnews@gmail.com
SEPTEMBER 2020

See page 5,
Photo by Derek Law



Willingham  Hub

Can we help you?

If you or a family member
are self-isolating and need
assistance, our contact
numbers are:

07529 222538

07529 222542

07529 221954

07529 222578

07529 222579

THE PLOUGHMAN HALL WEST FEN ROAD, WILLINGHAM

Book Willingham's village hall for your

Wedding Reception

Birthday Party

Private Function

Play or Musical Event

Club or Society Meeting

The Ploughman Hall

Offers:

A large hall

Bar facilities (subject to licence)

A fully equipped kitchen

Disabled friendly facilities

Ample off-road parking

Check out our competitive hire charges and make your booking at the Parish Office (01954 261027)

The Ploughman Hall – Willingham's village hall

Cottenham Computers

01954 593025

Call the experts for good honest advice



We will come to your home or business to fix your computer

Got any of these issues?

- ✓ Computer crashing
- ✓ Network Wi-Fi connection Issues
- ✓ Computer infected with viruses
- ✓ Windows won't boot
- ✓ Can't access your email
- ✓ Can't access the Internet
- ✓ Computer running very slow

With over 16 years experience it is likely we have seen your problem before. We are happy to advise you free over the phone..

We don't charge a fortune

So give us a call TODAY! We won't bite!

Working all day? Then we can collect and deliver FREE to and from your work place*

* Within 10 Miles of Willingham

We cover Willingham & surrounding towns & villages

For all computer related problems give us a ring!



www.cottenhamcomputers.co.uk



MARK BIRD
ELECTRICAL
SERVICES

Mark Bird

Electrical contractor
NICEIC Domestic Installer
Part P Approved
Tel: 01480 493008
Mobile: 07961 505189
Email: mbird494@btinternet.com



CHIMNEY SWEEP

J. L. Wight

Guild of Master Sweeps, Certificates issued
Advice given/problems solved

01954 253315



www.camsweep.co.uk

9 Cow Lane, Rampton



The Foot Care Clinic Willingham

Mrs Casey A. Javed BSc(Hons) Podiatry, SRCh, MChS, HCPC/State Registered

Mr. F.K. Javed BSc(Hons) Podiatry, MChS, HCPC/State Registered

- General chiropody – nails, hard skin & corns
- Diabetic foot care
- Children's Feet – Growing pains, Verrucas, etc.
- Sporty Feet & associated injuries + pains
- Ingrowing toe nails – surgical option available
- Custom made Orthotics/ insoles
- Biomechanics & Gait analysis



New Clients Always Welcome

Saturday Appointments & Home Visits Available

Willingham Medical
Practice, 52 Long Lane
Willingham CB24 5LB

T: 01480 464507
or 07807 505534

Scrivens Opticians
1 Crown Place, St. Ives
PE27 5PD

T: 01480 301337
or 07807 505534

www.stivespodiatry.co.uk

J&G Blinds Ltd

Conservatory & Window Blinds



Vertical Blinds



Roller Blinds



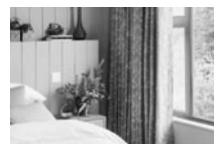
Venetian Blinds



Roman Blinds



Shutters



Soft Furnishings



Conservatory
Blinds



Perfect Fit
Venetian Blinds



Fly Screens

Tel: 01954 261149

Email: jandgblinds@aol.com



CONTENTS

Welcome to our first printed copy of *Willingham News* since the coronavirus lockdown began!

We hope you kept up to date by accessing our online issues which were put together every month during this time. It's not too late if not – you can see the covers on page 9 and all of them can still be read at www.willinghamlife.org along with most of our back issues.

Willingham News is a subsidiary of Willingham News Ltd and is edited by volunteers. We do our best to ensure the accuracy of the content of the submissions, but this cannot be guaranteed. We reserve the right to edit or omit articles at our discretion. The views expressed in readers' letters are not necessarily those of the editorial team. Send your contributions to **willinghamnews@gmail.com** as an email attachment of up to 250 words (no pdfs) to arrive before the monthly deadline. The Editorial Team comprises Liz Cosford, Jane Dowle, Wendy Law, Frances Watts, James Watts and Trevor Weston.

The **deadline for your contributions has returned to 8th of each month**. As the library still has restricted opening, hard copy can be dropped off at 15 Balland Field.

Bin Collections – Friday except where indicated:

Saturday 5 September	Blue and Green
11 September	Black
18 September	Blue and Green
25 September	Black

To contact local police, phone 101 or email:
SCambsCops@cambs.pnn.police.uk

PLEASE NOTE:

Back issues of *Willingham News* from October 2005 to the present (with the exception of March 2006) are now available on the Willingham Life website run by WAG:
www.willinghamlife.org/page/willingham-magazine-back-issues

Advertising

We would like to thank all our advertisers for their continued support during these difficult times. It's due to them that *Willingham News* is able to serve the village. Please continue to support our local businesses now and in the future when restrictions are lifted.

Advertising is sold on an annual basis for an insert into 12 issues beginning in January. Send any advertising queries or copy to: advertising.wnews@yahoo.co.uk, marking your e-mails Adverts. The *Willingham News* team wishes to thank all the advertisers for their support and interest. They play a vital role in maintaining this publication and also in our community as local businesses supplying goods and services. If you contact an advertiser, please mention that you saw their advertisement in *Willingham News*. Thank you all very much.

September News

Brief History of Willingham – Part 17	7
District Councillors' Report	5
Food for our Future	15
Friends of the Rosie	12
Old Willingham	6
Poem for September	6
Shopping Safely Online (Neighbourhood Watch)	18
Spitfire Photographs	16
Willingham 140 Years Ago	6
Willingham British School Trust	5
Willingham Hub	5
<i>Willingham News</i> Deliverer Vacancy	6
<i>Willingham News</i> in Lockdown	9

Clubs and Societies

Bowls Club	9
Gardening Club	18
Guides and Rangers	16
Social Club	16
Women's Institute	12

Quizzes

Book Quiz	8
Quick Crossword	8
Young Readers' Corner	8
Answers	12

Monthly Items

Bin Collections.	3
Celebration Days in September	20
Christians Together	11
Directory	23
Library	15
Medical Practice	14
Parish Council	10
Pastoral Letter	12

ALAN'S CARPETS

CARPETS & VINYL FLOORING

since 1973

Showroom: No. 1 Station Road, Swavesey
or samples to your home
CALL 01954 232298



General Building & Plastering Services

Jon Bullock

30 Rook Grove, Willingham, Cambridge CB24 5EZ

Tel: 01954 261838 Mobile: 07867 965688

Email: jon.jbalterations@gmail.com

plastering/dry lining/screeding/rendering/general building

PAUL THOMPSON

PAINTING & DECORATING, TILING
& PROPERTY MAINTENANCE
TELEPHONE : 07792874926 / 01954 203913

SUTTON TREE SERVICES

- HEDGE MAINTENANCE
- TREE REMOVAL, FELLING & REDUCTIONS
- GENERAL PRUNING
- STUMP REMOVAL
- FULLY INSURED
- NPTC QUALIFIED



Please call to discuss your requirements or to arrange a free quote.
Paul Young 07765 223 692 or 01353 775 076

WILLINGHAM MOTORS LTD

YOUR LOCAL INDEPENDENT GARAGE FOR ALL SERVICING/REPAIR
REQUIREMENTS, MOT TESTING, AIR CONDITIONING, DIAGNOSTIC SOFTWARE,
EXHAUSTS, TYRES

CAR SALES - P/X WELCOME CAR/VAN STOCK LOCATOR

QUALITY VEHICLES BOUGHT FOR CASH FREE COURTESY CARS

Tel: 01954 260467/206566 E-mail willinghammotors@aol.com www.willinghammotors.co.uk

WILLFLOWER FLORISTS

134 Rampton Road
WILLINGHAM

Tel: 01954 260 831

Fresh Cut Flowers, Bouquets, Wreaths,
Wedding Flowers and Arrangements



www.bushelboxfarmshop.co.uk

01954 206015

Local Fruit, Vegetables, Eggs, Preserves & more
Open Tues - Fri 10 - 6 and Sat until 4
130 Station Rd Willingham CB24 5HG



Cambs Oven Cleaning

Revive Your Oven,

Contact Ian Morley on 07584 684853

English Rose

BEAUTY HOUSE

BEAUTY • SPA TREATMENTS • RELAXATION

Specialists in Shellac Nails, Bio Sculpture Nails, Manicures &
Pedicures, Spray Tanning, Hair Removal, Eyelash Extensions, Facials,
HD Brows, Waxing, Tinting, Make-up and Massage.

16 Berrycroft, Willingham, Cambridge CB24 5JX

Tel: 01954 261176 Email: info@englishrosebeautyhouse.co.uk

www.englishrosebeautyhouse.co.uk



O'MALLEY SOLICITORS

Family Law Specialists

Divorce • Matrimonial Property & Finances • Co-habitation
Disputes Children Matters • Prenuptial Agreements.

With over 16 years' experience, we take a sympathetic and
sensitive approach to Marriage and Family breakdowns.

Contact us on 01954 202075.

O'MALLEY SOLICITORS

84 Rampton Road, Willingham, Cambridge, CB24 5JQ

Tel: 01954 202075 E-mail: omalley solicitors@googlemail.com

Authorised and Regulated by the Solicitors Regulation Authority

SRA No: 318339

Universal Fencing Co Ltd

Established
30 Years

Tel: 01954 230860

mob: 07786012990

www.universalfencing.co.uk

SUPPLY ONLY OR SUPPLY AND ERECT
FREE ESTIMATE



Palisade



Featheredge



Field Gates



Security Fencing

8 Arthur Court Norman Way, Over, Cambridge, CB24 5AL

Open: MON-FRI 7.30 - 5pm

Commercial, agricultural, industrial & domestic fencing contractors



Church End Carpet & Vinyl Centre

We are a family run business, established in Cottenham in January 1982

We offer a comprehensive range of quality carpets, vinyls and laminate
flooring at highly competitive prices with a great service and fitting.

76 High Street
Cottenham
Cambridge
CB24 8SD

Email: sales@churchendcarpets.co.uk
Tel: 01954 250287

www.churchendcarpets.co.uk

Open: Monday, Tuesday, Wednesday, Friday: 10:00 - 18:00
Saturday: 10:00 - 17:00

With the Government's advice to pause shielding and the general lowering of restrictions, the number of requests for assistance from the Willingham HUB has declined to just a few calls a week. Most requests handled by the volunteers were for prescriptions and grocery shopping.



The Pharmacy is now offering a delivery service for prescriptions and over the counter items to eligible residents. Anyone who would like to use this

service should call them on 01954 261787. The Pharmacy has also launched an app for Android and Apple phones which can be used to order prescriptions and deliveries.

Anybody who was on the shielding list should now have registered for priority access to online grocery shopping delivery slots, but even without priority, it is now generally much easier to book deliveries.

The HUB is not closing down; the threat of further waves of infection and the possibility of local lockdowns will remain with us for some time. However, the phone system is changing. Instead of separate numbers for different zones in the village, there are now just five numbers for coordinators which can be called by anyone needing assistance. When calling, please pick any number, to avoid overloading the first volunteer on the list.

07529 222538 • 07529 222542 • 07529 221954 •
07529 222578 • 07529 222579

The 'New Normal' in Education – Creating New Needs?

The Trust distributes grants to support young people in the village, particularly those who have gained the required academic grades and will be starting a university course or apprenticeship programme this autumn. It also considers applications from institutions seeking financial support for activities which will contribute to the educational and social development of young people from the village.

The current COVID-19 situation is creating a 'new normal' in education. It is resulting in wholly unexpected changes to the organisation and delivery of educational programmes. These may include a switch to online lecture delivery and reduced face-to-face contact with teaching staff. Students may have to consider the purchase of additional computer hardware and software to facilitate these changes. Educational institutions may also have to develop innovative ways of delivering their curricula which may place a greater strain on their limited resources.

The Trust has funds available to help students, their parents and educational institutions meet these additional, possibly unexpected, costs. The next meeting of the Trustees will be on the **16 October**. Please get in touch to find out if the Trust can help you. Enquiries should be made to the Trust Secretary, Dr Ray Croucher, 01954 261113 or raycroucher47@gmail.com.

District Councillors' Report

Solar Together Cambridgeshire Scheme

This scheme from South Cambridgeshire District Council and Cambridgeshire County Council will give residents the opportunity to take part in a group-buying scheme for solar panels aiming to help homeowners feel confident they are paying the right price for a high-quality installation from a pre-vetted installer which will boost local renewable energy generation. The scheme is free and there is no obligation to install panels. Homeowners can register in the scheme from **1 September**. Pre-vetted installers will compete to provide the best price for high quality systems. Those who registered will then receive a personal recommendation and have until **11 December** to decide whether or not to go ahead.

Correct Disposal of Face Coverings

People in Cambridge and South Cambridgeshire are being asked to make sure disposable face coverings and masks are put in their black wheelie bins at home, to help control the spread of Coronavirus. Disposable PPE such as face coverings, masks and gloves have been found in the blue recycling bins, despite none of these items being recyclable.

Disposable PPE can be put in litter bins outside shops,



but otherwise need to be taken home and put in the black bin. Advice has been published on the Government's website, and it is important to remember that if you are suffering from coronavirus symptoms, any medical waste and PPE should be bagged separately and left for three days before going into your black bin. Please see this website link: <https://tinyurl.com/y4tuecov>.

*Councillor Dawn Percival, 07948 683599,
cllr.percival@scambs.gov.uk.
Councillor Bill Handley, 01954 200287,
cllr.handley@scambs.gov.uk.*

Old Willingham



If you look up at the roof in our medieval church, you will see several carved angels like this. It's worth walking round and looking at each one because they are all different. One is holding a hammer, one has a pair of pliers, one is holding some large nails and the one pictured here is playing a lute. You might think these angels are very old but, in fact, they were carved around 1900 when the church was restored. However, the roof itself is very old. In fact, it was second hand when installed in 1538, being moved from Barnwell Priory in Cambridge which was then being demolished. The roof was a bit too wide for our church and had to be squeezed up so the beams are not quite vertical and, eventually, required steel bars between the walls to stop the roof pushing the walls out. The inspiration for these angels came from the ones carved in relief in the runner boards of the old roof.

See more photos at www.oldwillingham.com. If you have stories or memories about this picture, please contact Jon Edney, 31 High Street or email oldwill@oldwillingham.com.

September Poem

September draws Summer to a close,
waiting in the wings for Autumn.
Birds are getting ready to fly away
to distant Summer lands.

September has a quieter gentle feel
as small animals gather the food
which prepares their life for later.
Such a soft contentment in the air.

Christine Lacey

Willingham 140 Years Ago, Part Two

Last month I gave an idea of how the villagers earned a living in 1879, but now it's the turn of the two major occupations in the village at that time, farming and the beer, wine and spirit trade.

Seven public house licensees with named premises appear in the Directory. The pubs are the Black Horse, the King William IV, the Windmill, the Rose and Crown, the Duke of Wellington (which in the previous century was called The Warriors), the George and Dragon, and the White Hart. Some of these names are still familiar today. Also, at Earith Bridge, just on the parish boundary, a small hamlet had grown up and this had its own public house, The Hardwicke Arms, which was unusual in belonging to the Bedford Level Corporation.

In addition, there were eight beer retailers, some of whom also had other occupations, plus the obviously superior Edward Ingle who, as well as being a grocer and draper, was the agent for W & A Gilbey, wine and spirit merchants.

Farming was the major occupation of those mentioned in the Directory, with 38 people including some women being described as farmers. Most of the farms are not named, Queenholme being an exception. This number seems incredible but, looking at the census of two years later, it is obvious that some of them were farming in a very small way, the smallest acreage mentioned being two acres, the largest 250.

Not surprisingly there were about 120 men described in the 1881 Census as 'Farm Labourer' or 'Agricultural Labourer', most of whom lived independently in or near the village. These are not included in the Directory which did not cover the working classes.

The Directory gives a good picture of Willingham at the end of an era in the life of the village. At this time the country was just entering into the Great Agricultural Depression which followed a series of bad summers, the worst being in 1879, the year of the Directory. The proportion of farming bankruptcies registered in Cambridgeshire compared with the neighbouring counties fluctuated over the rest of the century, but it was during these years that farmers began to diversify into fruit growing and market gardening in greater numbers. D T Fish, writing in *The Gardeners' Chronicle* in 1894, praises the good state of most of the orchards, and mentions that the bulk of the trees range from 20 to 30 years old. The old ways and crops were rapidly disappearing so it's good to have a reminder of what life here was like 140 years ago.

Anne Kirkman

Willingham News Deliverer Vacancy

We need someone to deliver to the residents of Fen End. This round has 56 copies. If you are able to help, please contact David Clarke on 01954 260600 or clarkedavid99@yahoo.com.

Part 17 – A Rector of Influence – But Outside Willingham

Reigns of: King Charles II 1660 to 1685, King James II 1685 to 1688 and King William III and Queen Mary II, 1688 to 1702

By any measure, the year 1679 must have been a good one for William Saywell. He was already Chancellor of Chichester when he was appointed Rector of Willingham that year, and within months he was appointed Archdeacon of Ely and Master of Jesus College, Cambridge. In 1685, he became Vice-Chancellor of the University. With all these responsibilities he must have been a man of considerable wealth and influence as well as being very busy. So busy that, like his predecessor, Saywell was an absentee Rector of Willingham. During the 22 years of his appointment, the parish was served by three curates: Samuel Saywell (William's brother), Richard Routh and John Brookes.



Picture courtesy of Historic Royal Palaces Image Library, www.hrp.org.uk.

Bequests to the Village

Willingham may have been somewhat neglected by its Rector on a day-to-day basis, but William Saywell remembered the village in his will. He left £10 per annum in trust to the Schoolmaster of Willingham and his successors and a further £10 to the poor of the village. He left his widow £150 per annum for life and the rest to his brother Samuel, the curate already mentioned. Samuel, in his turn, prompted perhaps by affection for the village, or by a strong sense of responsibility for it, left half the total rental income derived from Queenholme Drove way to the poor of Willingham when he died.

Meanwhile ownership of the Lord of the Manor had changed. The Holman family had become the sole owner of the Manor in 1664 and remained as such until 1689, when it passed to John Holman's nephew, John Brownell. These changes must have had some effect on the village, but none appear to have been recorded.

National Political Turmoil

National politics were in considerable turmoil at this time, with the ever-present friction between Protestants and Catholics persisting at the highest levels. King Charles II had died in 1685 and been replaced by his brother, King James II. But James' pro-Catholic policies and arrogance led to his abdication in 1688 and his subsequent escape to France. There followed an invitation to William of Orange and his wife Mary, in Holland, to become joint King and Queen of England as William III and Mary II. Both were Protestants and the invitation to them from Parliament to share the Crown jointly was aimed at saving the English constitution and the Church of England, together with further limitations to royal power.

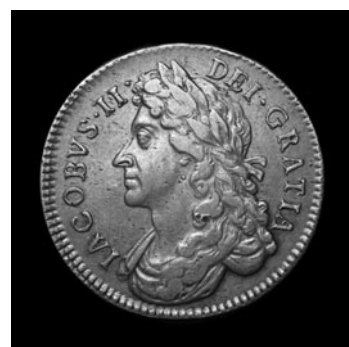
The Rector of Willingham's Protestant Stand in National Politics

While it is doubtful if the village itself was much affected

by these matters, the Rector of Willingham was certainly making his Protestant views known nationally. This was helped by his influential positions as a leading Cambridge academic and Vice-Chancellor of the University, Archdeacon of the powerful Diocese of Ely and being a close friend of the Bishop, who sat in the House of Lords. Saywell published extensively and the titles of his works, such as *What reformation is necessary to prevent Popery* indicate an explanation of his strong views about the royal succession to the throne. Coming merely from the Rector of Willingham, the impact of such writing would have been very limited, but coming from a leading Cambridge academic who had influence at the highest levels of ecclesiastical society and the House of Lords, the impact would have been very different. Did the Rector of Willingham actually influence Parliamentary policy on the subject of the Monarchy or was he simply reflecting it? Whichever way it was, the resulting Act of Settlement in 1701 confined succession to the throne to a Protestant King or Queen. It has remained so to this day.

Alan Fawcitt

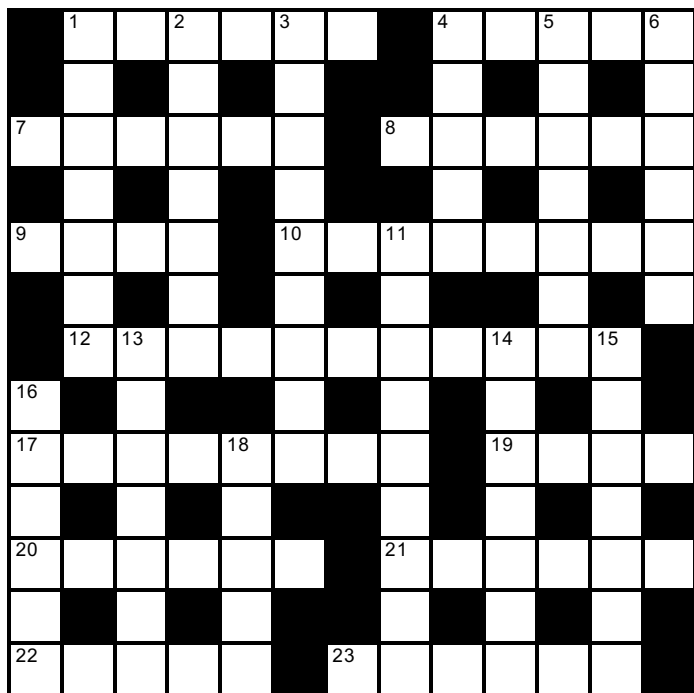
Next time: *A Summary of the Changes Over 500 Years*



Pictures courtesy of www.amrcoins.com

Quick Crossword by Willow

Answers on page 12



Across

- 1 Dignified and impressive (6)
- 4 Alcoholic drinks made from grapes (5)
- 7 Thin cotton cloth (6)
- 8 Specialised language (6)
- 9 Eye infection (4)
- 10 And so forth in Latin (2,6)
- 12 Think about (11)
- 17 Boss (8)
- 19 Boulder (4)
- 20 Scope for action (6)
- 21 Lose one's hearing (2,4)
- 22 Delicious (5)
- 23 Brook (6)

Down

- 1 Taking place in the water (7)
- 2 Old ship (7)
- 3 With honesty (9)
- 4 Marine mammal (5)
- 5 Fail to care for properly (7)
- 6 Way words are put together in a sentence (6)
- 11 Legal right to reproduce printed material (9)
- 13 Govern cruelly (7)
- 14 Shorten a literary work (7)
- 15 Shout out in surprise (7)
- 16 Single-minded follower of a cause (6)
- 18 Egg-producing organ (5)

Book Quiz

Answers on page 12

I was thinking today that I probably don't eat enough fruit so that gave me an idea for our theme this month. See if you can find the authors of this 'fruity' collection:

- | | |
|---|--|
| 1 <i>James and the Giant Peach</i> | 6 <i>The Cherry Orchard</i> |
| 2 <i>The Adventures of Huckleberry Finn</i> | 7 <i>Blackberry Wine</i> |
| 3 <i>The Grapes of Wrath</i> | 8 <i>Driving Over Lemons</i> |
| 4 <i>Oranges are Not the Only Fruit</i> | 9 <i>Fried Green Tomatoes at the Whistle Stop Café</i> |
| 5 <i>A Clockwork Orange</i> | 10 <i>The Golden Apples of the Sun</i> |

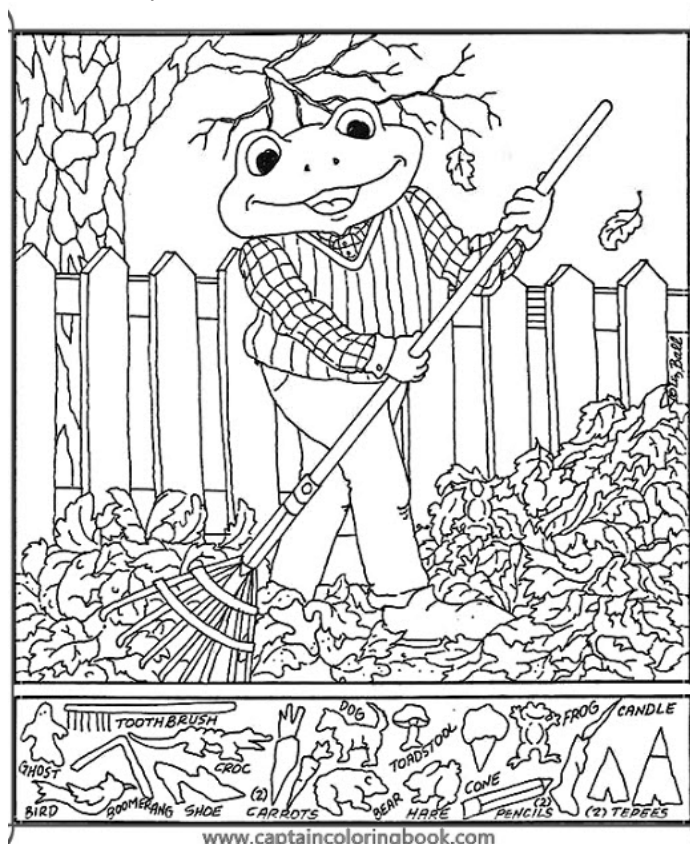
Christine Lacey



Young Readers' Corner

Mr Frog Sweeping the Leaves

Can you find the Hidden Objects in the picture? It might be easier if you colour it in!



September Sums!

The answer to each sum is the starting point for the next. What's the final answer E?

$$(144 \div 12) + (39 \div 3) = A$$

$$(A \times 4) - (16 \times 5) = B$$

$$(B + 10) \div (23 - 18) = C$$

$$(C \times 2) \times (63 \div 9) = D$$

$$(D \div 4) + (32 - 24) = E$$

Answers on page 12

Willingham News in Lockdown

Unfortunately, due to Government restrictions during the COVID-19 pandemic, we were unable to deliver printed copies of *Willingham News* to all houses in the village as we normally do. However, we still produced the magazine each month during that time, as you will see from the

images of the covers below. These magazines are still available to read on the Willingham Life website, as are all our back issues, so if you haven't already done so, please take a look at www.willinghamlife.org.



The July cover highlighted the revival of the village's Bowls Club and here is an update:

The Bowls Club's return to partial normality is going very well. The club has gone through some strange times over the past couple of years, peaking with the COVID-19 virus, but we are coming out of this as a much stronger group and the future is looking bright. Funding has been generated from local businesses and Government bodies, enabling us to make significant improvements to the club which we want to continue. Members have been working very hard on this and we would like to thank everyone involved.

We have attracted new members recently and would love to see more locals down at the Recreation Ground trying their hand at this friendly and relaxing sport. The annual subscription has been dropped to £15 for this year due to the government restrictions.

Why not pop down and see if you like this pleasant pastime – all you need is a pair of flat-heeled shoes. Lawn Bowls is ideal for any age or ability and so is an ideal way to socialise safely and get some exercise at the same time.

Contact Ian Bissett on 07973 631802 or email willinghambowlsclubsec@gmail.com.

FROM THE PARISH COUNCIL

www.WillinghamParishCouncil.gov.uk

Coronavirus Latest

With the end of shielding, the Willingham Hub is now scaling down but still has contact numbers for those who may need assistance, see page 5. The Pavilion and Ploughman Hall should now be open, although still with restrictions according to the latest Government guidelines. The Parish Council itself continues to meet remotely and parishioners can attend, and speak if they wish. Meeting details are published with agendas. The office remains closed to the public and is operating with reduced manpower, but can still be contacted via email or phone (and answering machine).

Land Donation

A parishioner has generously offered to donate a small parcel of land to the Council, to be retained as open land and enjoyed by all villagers. The parishioner wishes to remain anonymous for now, so the precise details will not be made public until the legal niceties are complete. The Parish Council has agreed to pay all legal fees, and this will come from Section 106 monies which must specifically be spent on open land provision.

Highways

After general alarm at the plan to close Rampton Road for the installation of water mains for the new development, a meeting was arranged between the various Parish Councils and Cambridge Water. Happily, Cambridge Water has reported that the roadworks are currently postponed indefinitely and, should they proceed in the future, they would seek alternative access routes to the site to avoid closing the road.

The A14 Parish Legacy Projects is a fund set up to provide highways improvements to parishes affected by the A14 upgrade works. Willingham had apparently successfully applied for funding for a footpath to the Community Orchard from the edge of the village. After a long slumber whilst delivering the road itself, and then the COVID-19 crisis, we have finally heard from them again. They say we will be receiving an 'anticipated timeline' soon.

Last year we made a bid under the Minor Highways Improvement Scheme for a 40 mph buffer on the Earith Road where it enters the village. This was unsuccessful but undeterred we will be applying again with a modified bid for the next round, which closes in September. There seem to be quite a few of these buffers around the county, so we are more hopeful this time that our bid will be looked upon favourably.

Community Warden Scheme

Earlier in the year we agreed to join this service which assists older people to continue to live independently at home by providing daily contact and support, either by a personal visit or a phone call. Provision of the warden will be administered by Age UK, and for the initial two years will be funded by a District Council grant. Once again, the pandemic has thrown a spanner in the works, with Council officers being deployed to COVID-19 response duties and Age UK being seriously affected. However, with the current lowered crisis levels and a measure of normality returning, it is hoped to start rolling out the scheme in November.

Zero Carbon Community Grant

The Ploughman Hall heating system has not aged well, as any winter users would be able to confirm, and is very inefficient. South Cambridgeshire has a community buildings grant as part of their Zero Carbon Community Grant Scheme, and we will be applying for funding to help with replacing the heating and perhaps installing solar panels on the Hall's south-facing roof. As a first step in the application we have commissioned an energy survey and action plan which will detail the cost and carbon-saving potential of any proposed measures.

Phone Box Defibrillator

Another pandemic-delayed project, as the Councillor who was leading this works for the NHS and has been understandably busy. The delay has been beneficial, as we have been approached by the London Hearts charity that provides grants to Parish Councils for installing defibrillators and will be applying to them. The project has now been taken over by Councillor Hutchcraft and should start to progress again, although most of the delay so far can be attributed to very slow responses from British Telecom.

Council Office Details:

Ploughman Hall, West Fen Road, Willingham, CB24 5LP.

Tel: 01954 261027.

Email: clerk@willinghamparishcouncil.gov.uk.

Opening hours: Monday – Thursday, 10 am – 1 pm for phone calls and emails only, not open for visits in person.

Mrs Mandy Powell
Parish Clerk

D Law	Parish Council Chairman	cllr.law@willinghamparishcouncil.gov.uk	01954 202188
N Harris	Planning Committee Chairman	cllr.harris@willinghamparishcouncil.gov.uk	07792 611226
P King	Parish Council Vice Chair	cllr.pking@willinghamparishcouncil.gov.uk	01954 260780
L King	Leisure & Amenities – Lead Cllr	cllr.lking@willinghamparishcouncil.gov.uk	01954 260780
R Manning	Greens & Boundaries – Lead Cllr	cllr.manning@willinghamparishcouncil.gov.uk	01954 261235
B Mansfield	Cemetery – Lead Cllr	cllr.mansfield@willinghamparishcouncil.gov.uk	01954 261540
R Tassell	Halls – Lead Cllr	cllr.tassell@willinghamparishcouncil.gov.uk	07974 673836



st Mary + All Saints

CHURCH STREET, WILLINGHAM
www.5folds.org.uk

Our New Team Vicar

We are delighted to confirm that we are being joined by our new Team Vicar, Lucy Cleland, at the beginning of September. Lucy becomes the second full time member of the Clergy Team looking after the churches and all aspects of church life in the villages of the 5fold Group.

Lucy has written the following note to introduce herself:



I am writing this note shortly before I join you in the parishes from **1 September**. Thank you for waiting all this time for my arrival and for accommodating a small licensing service.

It will be good to meet people face to face as I find my way around each village. I am hoping to do some walking along the footpaths and lanes. Do look out for a new person wearing a dog collar along your road. Or you might spot me on my bike or out for a run. I like the outdoors, having been spoilt by a 90 acre woodland limestone

terrace estate at Scargill House in the Yorkshire Dales.

Rarely do I decline a cup of tea or coffee. There may be an opportunity to chat outdoors in the garden during what is left of the summer. I will also be glad to get to know folk by phone or Zoom. Initially email will be the best way to get in touch, lucy@5folds.org.uk, until the Rectory telephone number is confirmed.

I come to 5folds on my own although I intend to get a dog in 2021. I grew up in Farnham, a small town on the Surrey/Hampshire border and spent my childhood in the company of a younger brother (Sam) and a golden retriever. So that is my dog of choice and I will be looking for a canine companion who is pastoral in nature. My parents, brother and family still live in that area. I have two young nieces (aged seven and two) who are looking forward to visiting me in the Rectory along with their parents. My mum has advanced dementia and now lives in a nursing home. My dad is in good health and like me, enjoys dog walking.

For my leisure time, you might find me taking exercise, following sport on TV or listening to Christian and classical music. Food is another of my loves with curry being my favourite dish. Cheese, oatcake and a nice glass of red wine are also close to my heart. I have spent the last three years as one of the resident leaders at Scargill House, a Christian Retreat Centre in the lovely Yorkshire Dales. One aspect of my time there was being tempted by puddings, afternoon tea and cake on a daily basis. In this new chapter of life, I hope to reduce my sugar intake. Please don't be offended if I turn down the offer of biscuits, sweets and desserts. Chocolate will be harder to resist.

I hope this gives you a flavour (excuse the pun) of who I am. I look forward to getting to know each of you over the course of time.

Lucy Cleland

Rota for Services at the Group Churches

This is still being developed in the light of changes of advice and regulation from the Government and the Church of England. However, the current plan is for Lucy's first service in Willingham to be on **Sunday 27 September**. Please check the 5fold website and Church Notice Board for any further news as time goes by.

Daily Church Opening

The opening of the Church each day for private prayer and reflection is continuing, subject to any change in the regulations. The church will be open between 10 am and 4 pm every day unless closed for hygiene purposes after an open service.

There is a dedicated space for people to use and a daily cleaning and sanitising regime in place. Socially distanced chairs are set out and each one has a card to be turned over to show when they have been used and so will need to be cleaned.

We are pleased to have seen several people using the church for a quiet and reflective time in their day. Everyone in the village is welcome, so please do come and try it for yourself.

Contact Details:

Administration:

Gillian Beal 01954 203459 or admin@5folds.org.uk

Clergy:


Simon Gill 01954 230434 or simon@5folds.org.uk

Beth Cope 07720 330272 or PioneerMinister@northstowe.church

Jenny Hill 07970 949331 or revdjennyhill@5folds.org.uk

Jan Payne 07780 674563 or jan.payne@northstowe.church



George Street, Willingham, Cambridge CB24 5LJ
www.willinghambaptist.org and 

When we went into lockdown back in March, we assumed that we would not be meeting for a few weeks and that, by September, we would be back together again. However, given the current situation and the very strict guidelines from the government, it is still not practical for us to be physically meeting together in the church building. We are continuing to review the guidelines but will only reopen when we feel it is safe to do so.

We are still gathering virtually as a fellowship on Sundays and also in our mid-week *Wednesday Reflection*. The reflections are also being recorded and are available to listen to on our website: www.willinghambaptist.org/wednesday-reflections.

If anyone would like to join us at a gathering or mid-week reflection, please get in touch by email, secretary@willinghambaptist.org, or phone 01954 260538 and we can send you the information.

We are aware that people may be struggling or lonely in isolation, so if you want to chat, or pray with someone, or have any other needs, please also get in touch.

Emma Launchbury
 Church Secretary

Parish of the Sacred Heart of Jesus

Roman Catholic Diocese of East Anglia
www.sacredheart-stives.org

For online Masses please see www.cbcew.org.uk/home/our-work/health-social-care/coronavirus-guidelines/live-catholic-mass-online.

Pastoral Letter

Unfortunately, there is no Pastoral letter this month. Since Father Porczak left we have been unable to find a replacement from the local Roman Catholic Church.

Instead here is a devotional poem by George Herbert, 1593 – 1633. He was Orator (the voice of the university during public occasions) at Trinity College Cambridge and later, rector of a small parish outside Salisbury. He wrote religious poetry throughout his life and was associated with the metaphysical poets.

Jordan (I)

Who says that fictions only and false hair
Become a verse? Is there in truth no beauty?
Is all good structure in a winding stair?
May no lines pass, except they do their duty
Not to a true, but painted chair?

Is it no verse, except enchanted groves
And sudden arbours shadow coarse-spun lines?
Must purling streams refresh a lover's loves?
Must all be veil'd, while he that reads, divines,
Catching the sense at two removes?

Shepherds are honest people; let them sing;
Riddle who list, for me, and pull for prime;
I envy no man's nightingale or spring;
Nor let them punish me with loss of rhyme,
Who plainly say, *my God, my King*.

Friends of the Rosie

We hope that all our customers have managed to avoid the coronavirus and that their families are all in good health.

We have not had any stalls since the outbreak, but the lockdown has provided us with a captive online audience. We have just doubled last year's takings on eBay in just six months and recently listed jewellery items and craft kits. Our profits through *Rosie in Stitches* are over £3,000 and we have registered our charity with Amazon Smile so that customers can donate at the checkout.

We are still welcoming donations of craft materials but need to find more storage space for the items. If you have a garage or shed we may be able to rent, please get in touch.

All the existing stock from the Rosie tea bar has been split between the local Queen Edith foodbank and the hard working nursing and security staff in the Rosie. Both were extremely grateful. We don't know when our tea bar will re-start as most of our volunteers are of retirement age or older. If you know of anyone who might be interested in volunteering with us, please contact Ann Laskey, annlaskey@icloud.com.

New members are always welcome. For details about volunteering, please contact Mary Sanders on 01223 356615 or see www.rosieinstitches.org.uk.

Willingham Women's Institute



All meetings and events are cancelled until the COVID-19 crisis has passed but normally we meet on the second Monday of the month at 7 30 pm in the Social Club. If you would like to join us please email willinghamwi28@gmail.com and we will be able to keep you up to date.

We can't wait for WI to restart as we believe it's a great asset to the village so when it does, why not give it a try?

History of Willingham WI

Our branch was founded in 1928 and it's interesting to look back through our meeting minutes from former times. Some of the activities are fascinatingly different from now but others are surprisingly similar, such as the description of the annual outing. Here are some extracts from 1935:

- Great interest was shown in the demonstration of the *Darling Washing Machine*. After the clothes were washed and thoroughly inspected it was agreed to be very good!
- Our talk was upon *Jokes and Laughter* given by Mrs White. The arresting point in the talk was that if we had a really good laugh every day we should not need to go to a beauty parlour.
- The Annual Outing – Twenty-two members went by coach to Southend and thoroughly enjoyed the day. All went different ways and we met at times. There was much merriment in the coach on the return journey.
- From the Qualifying Whist drive we sent the sum of £1-4-0 to our Federation funds. At this Whist Drive we had the privilege of playing with our new packs of cards. We had the gifts of court cards from three of our members and we – as an Institute – invested in 6 packs. The clean cards were much appreciated by the players. Our 'members night' gets more thrilling every year.

Crossword Answers:

Across: 1 August, 4 Wines, 7 Muslin, 8 Jargon, 9 Sty, 10 Et cetera, 12 Contemplate, 17 Employer, 19 Rock, 20 Leeway, 21 Go Deaf, 22 Tasty, 23 Stream.

Down: 1 Aquatic, 2 Galleon, 3 Sincerely, 4 Whale, 5 Neglect, 6 Syntax, 11 Copyright, 13 Oppress, 14 Abridge, 15 Exclaim, 16 Zealot, 18 Ovary.

Book Quiz Answers:

1 Roald Dahl, 2 Mark Twain, 3 John Steinbeck, 4 Jeanette Winterson, 5 Anthony Burgess, 6 Anton Chekhov, 7 Joanne Harris, 8 Chris Stewart, 9 Fannie Flag, 10 Ray Bradbury.

September Sums Answers

A = 25, B = 20, C = 6, D = 84, E = 29



WE'RE HIRING!
Contact us for permanent
or subcontract vacancies

*we've got your home
improvements covered*

PLUMBING & HEATING

- ▶ fit a new boiler ◀
- ▶ upgrade your heating system ◀
- ▶ annual service for your boiler ◀

BUILDING SERVICES

- ▶ bathroom & kitchen installation ◀
- ▶ new build ◀
- ▶ home renovation ◀

call us on: **01954 782920**
or visit: www.ijcbuildingservices.co.uk



IJC is a family run Cambridgeshire business with over 30 years' experience.

We offer a comprehensive range of domestic and small commercial works across all forms of building, plumbing, heating and renewable services.

45 Viking Way, Bar Hill,
Cambridge, CB23 8EL

Karen
BEAUTICIAN

DAYTIME & EVENING APPOINTMENTS

95 Rampton Road
Willingham
Cambridge CB24 5JQ

Tel: 01954 260375
Email: karendench@hotmail.com
www.karenbeautician.co.uk



ARK FACIALS
SHELLAC/OPI
MANICURES
AND PEDICURES
ST. TROPEZ
SPRAY TAN
AROMATHERAPY
MASSAGE
TINTING
HOPI EAR
CANDLES
EAR PIERCING
MAKEUP

A.R.Aspinall & Sons Ltd

Tel: 01954 234966 Fax: 01954 234967
Unit 11 Norman Way Ind Est, Over, Cambs, CB24 5QE.
www.araspinall.co.uk

WE STOCK A FANTASTIC RANGE OF NATURAL PAVING
PRODUCTS COME AND VISIT OUR NEW DISPLAY AREA.

Bricks Concrete Blocks Lintels Cement Sand
Gravel Hardcore Timber Fixings Footwear
Decorating Supplies Industrial clothing Paving Slabs

Opening times: Mon to Fri 7.30am – 5pm



WE OFFER A FREE LOCAL DELIVERY SERVICE!

JASON KIRBY
*Professional Painting
& Decorating Ltd*

*A Professional Service
from Start to Finish*

Tel: 01954 211775
www.jasonkirbyltd.co.uk



MOBILITY EQUIPMENT

STAIRLIFTS, SCOOTERS, WHEELCHAIRS,
RISING CHAIRS, BEDS, WALKERS, TOILET &
BATHING AIDS, KITCHEN & HOUSEHOLD
AIDS, CONTINENCE CARE, CUSHIONS

HOME VISITS AVAILABLE

SCOTSDALES GARDEN
CENTRE,

HORNINGSEA, CB25 9JG

Tel: 01223 863908

www.orchard-mobility.co.uk



Monday - Saturday 9.00-5.00

Orchard
mobility centre



WILLINGHAM SURGERY & LONGSTANTON BRANCH SURGERY

Reception Tel: Willingham 01954 260230 Longstanton 207600 Dispensary 207602

District Nurse Team: 01223 726469 Option 2 Health Visitors: 0300 029 50 50

Out of hours cover: Ring 111 Website: www.willinghammedicalpractice.nhs.uk

Farewell to Dr Cathy Suter:

As reported in the August magazine, we are to say farewell to Dr Suter who will be retiring at the end of September. We are not able to have a leaving book for patients to sign due to infection control reasons during the pandemic, but there will be a small post box available for you to leave letters and cards for her should you wish. Please leave any gifts at reception. Dr Suter has written the following message for all our patients:

'As many of you know, I am due to retire at the end of September after 29 wonderful years with Willingham Medical Practice. I cannot go without a huge thank you to all staff and patients. To be a GP is without doubt the most privileged job in the world, and I have had the greatest good fortune to work here at what I think is a wonderful practice. I first came to the practice in 1991, joining Dr Hewlett, Dr de Lacey and later Dr Marriott. The ethos of the practice has always been to try our best to provide high quality family medicine with the patient at the heart of what we do. In this I have always been supported by wonderful colleagues and staff, and of course by the village's patients, from whom I have learned so much.

I am going to miss you all so much that I'm hopeful I will be invited back from time to time to cover holidays! Thank you to everyone for your forbearance, your support and above all for letting me work here in this wonderful practice. THANK YOU!

Dr Cathy Suter

Keeping our Patients Safe

Following telephone triage with a clinician, we are asking increasing numbers of patients to attend the surgery for face to face consultations. We are therefore requesting patients wear a face covering in line with government guidance when attending the surgery.

We are also limiting the number of patients in the waiting area at any time. You may be asked to wait in your car or outside the front of the practice and will be called in when your GP/Nurse is ready, so that we can maintain safe social distancing at all times. All patients must abide by the one-way system we have in place and adhere to the social distancing markers at the reception desk. Please use the hand sanitiser dispensers when entering the premises.

Exemption Cards or Badges for Face Masks

The guidance suggests there is no requirement for the public to provide evidence, medical or otherwise, for exemption and therefore a self-declaration from the individual should be sufficient. GP practices are under no obligation to provide letters of support for anyone who does not fall under the list of exemptions but considers them to have another reason to be exempted.

Some people may feel more comfortable showing something that says they do not have to wear a face covering, in the form of an exemption card, badge or even a home-made sign. This is a personal choice and is not necessary in law. If you would like to use an exemption card you can use

WILLINGHAM SURGERY NORMAL OPENING HOURS

Monday	8 30 – 1 00	2 30 – 6 00
Appointments	8 30 – 11 00	3 00 – 6 00
Tuesday	8 30 – 1 00	2 00 – 7 00
Appointments	8 30 – 11 00	4 30 – 7 00
Ante Natal/Baby Clinic		2 00 – 4 00
Wednesday	8 30 – 1 00	2 00 – 6 00
Appointments	8 30 – 11 00	3 00 – 5 30
Thursday	8 30 – 1 00	2 00 – 6 00
Appointments	8 30 – 11 00	3 00 – 5 00
Friday	8 30 – 1 00	2 00 – 6 00
Appointments	8 30 – 11 00	3 00 – 5 30
Emergencies		4 00 – 6 00

WILLINGHAM PHARMACY Tel: 01954 261787 NORMAL OPENING HOURS

Monday	8 30 – 1 00	2 30 – 6 00
Tuesday	8 30 – 1 00	2 00 – 7 00
Wednesday	8 30 – 1 00	2 00 – 6 00
Thursday	8 30 – 1 00	2 00 – 6 00
Friday	8 30 – 1 00	2 00 – 6 00

the pdf attachments on the government website:

www.gov.uk/government/publications/face-coverings-when-to-wear-one-and-how-to-make-your-own.

COVID-19 Screening Update

NHS England announced that the following screening programmes have resumed, following temporary closure during the pandemic:

- Breast Screening
- Bowel Screening
- AAA Screening
- Diabetic Eye screening
- Cervical Screening

Many of these services are operating at a reduced capacity due to the COVID-19 restrictions and are dealing with the backlog, therefore significant delays have developed. Each service will be prioritising patients according to those at highest risk and request your patience as they start to operate again. **The surgery does now offer routine cervical screening appointments, therefore if you are overdue or have been invited, please contact reception to make an appointment.**

Carers' Meeting

Due to the current pandemic, the Carers' meetings are still currently postponed until further notice. They will be reinstated as soon as it is safe to do so. In the meantime, we would like to continue to support Carers in our local community in any way possible. If you are a Carer for someone and need advice or financial/emotional support, please contact Sue Lawson at susan.lawson7@nhs.net or ring 01954 260230.

Lisa Smith

Assistant Practice Manager

Willingham Library

www.cambridgeshire.gov.uk/library

0345 0455225

Willingham Library has Reopened!

Our current opening hours are:

Tuesday 2 – 6 pm

Friday 10 am – 2 pm

- The library will NOT be open for browsing. Staff will be finding and issuing items for you that have been ordered in advance, much like a 'Click and Collect' shopping service. You will only be able to enter the library to collect pre-ordered items or use a pre-booked computer.
- All items you wish to borrow will need to be ordered in advance, either by calling 0345 045 5225 or by using the online reservations system, available at: www.cambridgeshire.gov.uk/residents/libraries-leisure-culture/libraries/library-online.
- We also have a new service called Select and Collect. This allows you to request a selection of books from a particular genre, which library staff will choose for you. If you want specific books, please use the normal reservations system.
- You will need to bring your library card with you when collecting books and queue outside the library.

Please see the notices in the library window for more information.

Revised Library@Home Service

Cambridgeshire Libraries has a new Revised Library@Home Service. This service is open to Cambridgeshire residents who usually rely heavily on reading books or listening to audiobooks AND who are housebound, shielding or isolating due to age or health conditions under the current COVID-19 Government guidelines.

Applicants will be contacted by a member of the Library@Home Team to arrange a doorstep delivery of specially chosen books/audiobooks. Deliveries will be monthly (by prior arrangement) picking up previously loaned books/audiobooks when new ones are delivered. Please contact or phone 07442 022926 or 07342 700308.

Friends of Willingham Library

We have had a quiet summer, with all of our activities on hold, and this is likely to continue into the autumn. We have run a few activities in *Willingham News* online, the latest being an invitation to send in choices of Desert Island books. Here is a selection:

- *Les Misérables* by Victor Hugo. It has 365 chapters, one for every day of the year, so could be used to keep track of time. It's one of my sister-in-law's favourite books and I have been meaning to read it for ages. *Rachel Huxley*.
- *The Horse Whisperer* by Nicholas Evans. I found this as enjoyable as the first time I read it and of course, the ending is nothing like the film. *Chris Benton*.

- *An Anthology of P G Wodehouse*. Various Wodehouse stories have kept me amused and entertained over the last six months. A quote from Evelyn Waugh in 1961 says 'Mr Wodehouse's idyllic world can never stale. He will continue to release future generations from captivity that may be more irksome than our own. He has made a world for us to live in and delight in.' *Rosemary Tiley*.
- *The Oxford English Dictionary* (I don't know if this is within the BBC rules). I already have the *Bible* and *The Complete Works of Shakespeare* so there is no lack of stories, but while reading them I will come across words that I don't know. And in looking those up, my attention will be caught by other intriguing words nearby. An excellent way to pass the time. *Linda King*.
- *The Enchanted April* by Elizabeth von Arnim. It was also made into a film but not half as good as the book; the genre is women's fiction. My guess is that it is set in 1920s and the plot revolves round four women, all strangers renting an Italian villa/castle for a month away from the rest of the world. It is beautifully written, lifts any hint of depression anyone is experiencing, and has a happy ending. *Liz Kinnear*.
- *Watership Down* by Richard Adams. *Caroline Burkitt*.
- *The Island* by Victoria Hislop. *Sue Shimmens*.

Food for Our Future Campaign and Challenge



South Cambridgeshire District Council and Cambridge Sustainable Food are teaming up to challenge communities in South Cambridgeshire to reduce

their carbon footprint. The COVID-19 lockdown has moved our focus away from climate change but we still need to reduce our emissions.

The campaign launches in October with a Food Waste Challenge, including online cookery workshops, recipes, talks and storytelling. Have you ever wanted to reduce your kitchen food waste, but were not sure how? Are you concerned about how much food you throw out each day? We will guide you through measuring your food waste and your food footprint, introducing you to some top local chefs, their favourite recipes and tips for reducing food waste.

Food waste is a major contributor to some of the environmental issues we face today, including climate change and world hunger. UK households waste 4.5 million tonnes of food a year that could have been eaten? This is £700 for an average family with children!

We would love to hear from schools and other local groups who would like to join the challenge! Who can lower their carbon footprint the most? For more information please contact: bea@cambridge.sustainablefood.org.

Willingham Social Club

(also known as 'Willingham Social Distance Club'!)

We are delighted to welcome back our members. Marston's Brewery is now the main supplier to the club with an exceptional range of ales in particular.

During the lockdown, the Members' Bar has had a full refurbishment. It now has an open plan design with modern fixtures and fittings, new furniture and carpet throughout making a lovely atmosphere. Many voluntary hours were put in by a handful of committee members to achieve a room we are very proud of and we would like to thank them immensely. When we are able to reintroduce members' entertainment evenings, it will be much more versatile. Additional garden benches are located outside in the garden.

The bar is now open with reduced hours but, at time of writing, this is for our members only. We are sorry but no



children can be admitted for now, to enable the social distancing we must provide.

Please follow us on Facebook for the most up-to-date opening hours and guidelines or see the posters displayed externally at the Club.

Cash Bingo has recommenced on Wednesdays. Doors open at 6 30 pm for eyes down at 7 30 pm.

Everyone over 18 is welcome but please wear a face mask. Hand sanitising facilities will be available and the usual safety guidelines apply. If you have any questions, please speak to Lynne or John.

New members are always welcome. Simply download an application form from the website, pop into the club or email us and we can deliver one locally. For adult members it's £15 a year and over 65s are half price. See www.willinghamsocialclub.com.

Our 'local' Spitfire based at Duxford, in which Kate Humble flew in the recent documentary about the Battle of Britain. The aerobatics were seen over the village and caught here by Colin Brown.



Guides and Rangers

Willingham Guides and Rangers have been affected by the coronavirus like everyone else and have been unable to meet since March. However, that hasn't stopped us. We have been meeting every week via Zoom where we have been able to do a variety of activities including badge work, scavenger hunts, playing games and have even done jigsaw puzzles! The most popular activities are the Kahoot quizzes that we do, both ready-made and home-made. We have covered a wide range of subjects, from Guiding knowledge and how well do you know your leaders to Disney characters. Some of the ready-made ones are interesting – we did one on English landmarks and were rather surprised to see the Forbidden City and St Basil's Cathedral, Moscow!



Charlotte's Sleepover Tent

We have had two sleepovers in our own homes. We put up tents in houses and built dens in living rooms, as well as camping out in the garden or spending the night in hammocks.

We are hoping that we may be able to meet again in person before too long, but until then we will continue to meet every Thursday via Zoom. Using Zoom does have some advantages as people can join us wherever they are. So far, we have had members of our group who are on holiday in Cornwall and Spain joining us and, as I write this, one of our Rangers is planning to join us from Jamaica.

Lynn McGoff



Andy Tibbett & Sons Painting & Decorating



- * All internal & external work carried out to a high standard
- * Trade references can be supplied
- * Very competitive pricing
- * A prompt & polite service from a name you can trust



Telephone: 01954 230810

Mobile: 07717 493723

Email: andrewtibbett@hotmail.co.uk



David Wake Carpentry and Joinery

- Fitted Kitchens • Specialised Joinery
- Doors and windows • Property repairs

Office: 01954 260678 Mobile: 07836 290112



My ceramic work is hand-built using a variety of techniques. I deliver unique hand made gifts for all occasions...

•• COMMISSIONS / BESPOKE ••

Please call 07752 188423 for a viewing.

16 PRIEST LANE • WILLINGHAM
CAMBRIDGE • CB24 5HZ

Clay Crazy Ceramics
linda@claycrazyceramics.co.uk
www.claycrazyceramics.co.uk



Our salon offers all aspects of hairdressing including wedding hair with a personal touch. We can come to you on your special day.

Tel: 01954 260224

ARTISAN LANDSCAPES

Est. 1988

www.artisanlandscape.co.uk

Paving, Fencing, Pergolas, Ponds, Pruning, Structures etc

jonathan_ashman@hotmail.com
07768 821354



Jonathan Ashman Artisan Landscapes



**Open 7:20am to 6:00pm
Monday to Friday**

Norman Way Industrial Estate

OVER

07764 959238

ti@normansdogdaycare.co.uk



Find us on:
facebook®

**Puppy Classes every Tuesday evening
6:30pm-7:30pm 6 week courses - Join at any time.**

Come and train your puppy in a FUN, RELAXED, SAFE and CLEAN environment. Well Behaved Children welcome.



Kirsty Cornwell Coaching NLP Practitioner and Ollie Coach



A professional therapy service working with children, young people and adults using a transformational solutions based approach to manage feelings so you can move forward without emotional or behavioural issues.

One to one or family coaching and mentoring available.

www.kirstycornwellcoaching.co.uk

The Coaching Cabin, 59 Church Street, Willingham, Cambridge CB24 5HS

Mobile: 07990610517

Email: kirstycornwell6@gmail.com



ACA Heating & Plumbing

46 Church St
Willingham
Cambridge
CB24 5HT

Gas and oil boiler servicing, breakdowns
Boiler upgrades and heating installations
Bathroom and Wetroom installations
Un-vented cylinder installations/servicing
All types of plumbing and heating works undertaken
Local friendly services with over 14 years experience



Andrew Leahy mobile: 07833 204499
Email: andy@acaplumbing.co.uk
www.acaplumbing.co.uk

Neighbourhood Watch

Shopping Safely Online

Have you bought anything online recently? Almost 34% of all retail sales during May were carried out online and new research suggests that only 16% of UK consumers intend to return to their old shopping habits post-lockdown.

Online Shopping Fraud during Lockdown

Action Fraud, the UK's national reporting centre for fraud and cybercrime, received over 16,000 reports relating to online shopping and auction fraud during the lockdown, with losses totalling over £16 million. Members of the public have reported buying mobile phones (19%), vehicles (22%), electronics such as games consoles, AirPods and MacBooks (10%), and footwear (4%) on sites such as eBay (18%), Facebook (18%), Gumtree (10%) and Depop (6%), only to have the items never arrive.

Top Tips for Shopping Online Securely:

- **Choosing Where to Shop**
If you're making a purchase from a company or seller you don't know and trust, carry out some research first. For example, check to see if others have used the site and what their experience was.
- **Email Accounts**
Use a strong, separate password for your email account. Criminals can use your email to access other online accounts, such as those you use for online shopping.
- **Scam Messages**
Some of the emails or texts you receive about amazing offers may contain links to fake websites. Not all links are bad, but if you're unsure don't use the link, go separately to the website. And remember, if a deal looks too good to be true, it probably is.
- **Payment Method**
If you decide to go ahead with the purchase use a credit card if you have one, as other payment providers may not provide the same protection.

What to Do If You've Fallen Victim to Online Shopping Fraud

We all make mistakes and these days the scams can be incredibly convincing. If you think you've visited, or made a purchase on, a bogus website, take a note of the website's address and close down your internet browser. You should then report the details to Action Fraud and contact your bank to seek advice. Whether you've been a victim of fraud will depend on how much information you've provided to the website, so keep an eye on your bank transactions. Contact your bank immediately about anything that you don't recognise, even small amounts. For more information about how to stay safe online, visit www.actionfraud.police.uk/cybercrime.

Gardening Club

Calling All Gardeners, Crafters and Flower Arrangers!

Since the Horticulture and Craft Show has had to be cancelled this year, we have decided to have a 'virtual' Show by sharing photos of your gardening, crafting and flower arranging efforts. We would like to see photos of all the horticulture, produce and craft skills which would normally be exhibited at the Show, with a selection being published in the October issue of *Willingham News* in colour. We would love to hear from you all, especially our young gardeners and crafters. Please email your photos and anecdotes to willinghamnews@gmail.com by **8 September**.

Willingham Horticulture and Craft Show - A Brief History

An annual village Horticultural Show appears to have been started in the autumn of 1952. In 1954, an article in the then local paper, the *Independent Press and Chronicle*, reported on it: 'Inclement weather affected the attendance at the third annual Horticultural Show which was held at Willingham School. The show itself was one of colour and attracted a large number of entries. The judges commented on the high standard of exhibits and it was in their opinion the best in the whole county'.

There was a large commercial element in the horticulture classes as, at that time, there were many flower, fruit and vegetable growers in the village. There are articles on the history of this on the Willingham Life website at www.willinghamlife.org.

We have two trophies dating from 1954 to 1962, when the Show seems to have stopped. The next record comes from new trophies dating from 1979. We know that the Show started again then, led by a group of enthusiastic villagers, some of whom remain involved to the present day. It was first held at the Church Hall, then the Public Hall from 1989 to 1992, after which it moved to its present venue, the Primary School. The number of entries varied in the fruit, vegetable and flower classes from year to year due to growing conditions, but homecraft, art and handicrafts were always well supported.

Over the years, an expanding number of trophies have been donated for various classes and overall achievement. The money raised from the Show profits has always been given to Cancer Research.

In 1992 the Gardening Club took over the running of the Show and has continued to organise it up to the present day. During the Show's history, there have been many helpers behind the scenes and up front as stewards.

We start early in the year preparing the Show Schedule, organising publicity and soliciting raffle prizes and donations. The key person in the few days prior to the Show is the Exhibitor's Secretary, taking in application forms and making exhibitor cards. Stewards are busy on the Friday evening, setting up the various sections and classes and all day on the Saturday assisting the judges, who every year kindly give their time and expertise freely, and without whom the Show would not be possible. On Saturday afternoon the Show is open to the public. We are grateful to all the enthusiastic exhibitors who show us their produce and creative talents, stimulating much interest and comment, and perhaps sparking an interest in others to have a go themselves next year. In recent years, the involvement of other key village organisations has been invaluable to the success of the Show.

CAMBRIDGESHIRE BATHROOMS

Dream - DESIGN - ACHIEVE

- Premium Brands
- 3D Bathroom Design Service
- 2 Extensive Showrooms
- Technical Advice Throughout
- In House Delivery Team

Unit 1
Willow Road
The Lakes Business Park
Fenstanton
Cambridgeshire
PE28 9RB

01480 598 750

Mon - Sat - 9am to 5pm
cambridgeshirebathrooms.co.uk



Cambridge Executive Cars

Est. 2005

Delivering you and
quality, door to door



Based in Willingham, we are your mid to long distance Executive travel service specialists.

We service all airports, seaports, corporate events, London and much more for no extra cost than a standard taxi. So why not travel in style with us, your local company?!

Call or email for a quote today...
Bookings@cambridge-executive-cars.co.uk
Richard on 07782 130 380.



www.cambridge-executive-cars.co.uk

WLC
LIGHTING

Light up your life!

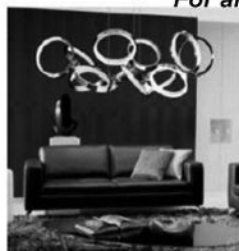
Come and visit us at

Unit 2J Merlin Court,
Lancaster Way Business Park,
Witchford, CB6 3GN

For all your lighting needs.
From Chandeliers to spotlights

Open Monday to Friday
10am to 5pm

Saturday
9am to 4pm



Witchford lighting Centre Ltd

www.witchfordlighting.co.uk

01353 664108.

Highgate Country Stores Ltd



Over Road, Willingham, Cambridge, CB24 5EU

- * High Quality Pet Food and Accessories
- * Poultry and Farm Animal Feed and Equipment
- * Horse Feed, Equipment and Bedding
- * Riding Accessories
- * Fuel - Flo Gas, Logs, Kindling and Coal



Open 7 Days a week

www.highgatecountrystore.co.uk Telephone: 01954 260798
info@highgatecountrystore.co.uk

Highgate Butchers

We sell locally sourced quality meat
and poultry enhanced by a wealth of
butchery experience from our friendly and
knowledgeable staff.

Come and see for yourself our great range of beef, Lamb, Pork,
Poultry and Game products, not forgetting our 28 day aged beef.

Opening times: Mon: Closed / Tue-Sat: 8-5.30 / Sun: 9-2
Tel: 01954 260444 highgatebutchers@gmail.com



POST
OFFICE

Willingham Post Office

15 High Street, Willingham CB24 5ES

01954 260331

Mon - Fri 08:30 - 18:00 Sat 08:30 - 15:30

- All mail services, including special delivery
- Travel Currency, Travel Money Cards, Travel Insurance and MoneyGram
- Passport Photographs, Passport Check and Send Service
- Document Certification Service
- International Driving Permits
- Vehicle Tax and Bill payments
- Financial Products - Insurance, ISA, Growth Bonds, Credit Cards and much more
- Broad Band and Phone Packages, Phone Top-Ups
- Free Cash withdrawals for most major Banks as well as Cash & Cheque Deposits
- Photocopying and Laminating Service
- Great range of Greeting Cards, Stationery and Pack & Post Items

CELEBRATION DAYS AND CULTURAL EVENTS IN AUGUST

2 Sept	CALENDAR ADJUSTMENT DAY – In 1752 Britain decided to abandon the Julian Calendar in favour of the Gregorian. By doing so, 3 September instantly became 14 September. So, as a result, nothing whatsoever happened in British History between 3 and 13 September 1752!
3 Sept	MERCHANT NAVY DAY – Our modern day seafarers are responsible for over 98% of our imports including almost half the food we eat, plenty of the fuel we rely on and virtually all the products and goods we tend to take for granted.
5 Sept	INTERNATIONAL DAY OF CHARITY was established by the UN to mobilise people all around the world through volunteer activities. The date was chosen to commemorate the anniversary of the death of Mother Teresa who received the Nobel Peace Prize in 1979.
7 – 11 Sept	ZERO WASTE WEEK – What happens when you throw something away? ‘Away’ isn’t some magical place; it’s landfill, an incinerator, the bottom of the ocean or the stomach of an animal. It’s always somewhere else. Check on how you can join in at zerowasteweek.co.uk .
9 Sept	EMERGENCY SERVICES DAY is also known as 999 DAY . It begins at 9 am on the ninth day of the ninth month. See 999day.org.uk for more details.
11 – 20 Sept	HERITAGE OPEN DAYS is all about celebrating our communities and local stories which feels more important than ever now. After much (and ongoing) discussion, it is going ahead with a mix of in-person and digital events. See heritageopendays.org.uk for the latest information. The hugely popular OPEN CAMBRIDGE is part of this scheme. From 11 to 13 September , there will be a series of online events from podcasts and films to virtual walks and talks. Visit opencambridge.cam.ac.uk for more details.
19 - 20 Sept	HENRY CECIL OPEN WEEKEND – Aspects of this popular two-day festival in Newmarket is now planned to be shown digitally.
20 Sept	OPEN FARM SUNDAY will be transferred online with live, virtual farm tours. The two key themes are: <i>Produce and Provenance</i> and <i>Wildlife and Biodiversity</i> .
21 Sept	INTERNATIONAL DAY OF PEACE – The UN General Assembly has declared today is devoted to strengthening the ideals of peace through observing 24 hours of non-violence and ceasefire. This year’s theme is <i>Shaping Peace Together</i> .
22 Sept	AUTUMNAL EQUINOX marks the end of Summer and the beginning of Autumn in the Northern Hemisphere. This year it occurs today at 2 30 pm. WORLD RHINO DAY – Rhinos are Africa’s armoured giants and have been on our planet for millions of years. But right now they need our help. Visit wwf.org.uk/learn/wildlife/african-rhinos to learn, get creative and maybe even adopt a rhino!
24 Sept	WORLD MARITIME DAY – <i>Sustainable Shipping for a Sustainable Planet</i> is the theme for 2020.
25 Sept	MACMILLAN WORLD’S BIGGEST COFFEE MORNING – Nothing stops a coffee morning! To find out how to host one this year, go to coffee.macmillan.org.uk . ONE-HIT WONDER DAY – Some songs have five minutes (or less) of fame, then vanish, leaving only a catchy tune to remember them by. Do you remember <i>Macarena</i> , <i>Who Let the Dogs Out</i> , <i>Ice Ice Baby</i> , <i>Kung Foo Fighting</i> and <i>Don’t Worry, Be Happy</i> ?
29 Sept	MICHAELMAS DAY or the FEAST OF MICHAEL AND ALL ANGELS is one of the Quarter Days. There are four each year, the other three are: Lady Day, Midsummer Day and Christmas Day. It’s also known as GOOSE DAY . <i>Eat a goose on Michaelmas Day; want not for money all year.</i>
30 Sept	THUNDERBIRDS DAY – <i>Thunderbirds Are Go!</i> Today is the date that the original <i>Thunderbirds</i> made its debut on British television in 1965.

Jane Dowle

BEAUTIFUL EYEWEAR AT DISCOUNT PRICES – SO WHAT'S THE CATCH?

No catch – we've been making great quality prescription glasses and sunglasses for over 30 years – and now you can buy your glasses directly from us.

Visit our **factory shop** – where you can choose from a wide range of contemporary frames with the help of our friendly and knowledgeable team.

We'd love to see you – please ring to book an appointment (we get quite busy!) and bring along your up-to-date prescription.

01954 231545
www.all-eyes.co.uk
sales@all-eyes.co.uk

20 Norman Way Industrial Estate
Over, Cambridge
CB24 5QE

We are open between 9am and 5pm Monday to Friday



A
NEW
PAIR
OF GLA
SSES BY
ALLEYES

THIS MAGAZINE WAS PRINTED BY

Target Print Ltd
DIGITAL AND LITHO PRINTING



Quality printing
to fit your budget

Newsletters • Brochures • Flyers • Letterheads • Compliment Slips • Menus
NCR/Carbonless Sets & Pads • Manuals • Business Cards • Postcards • Labels
Booklets • Posters • Roller Banners • Envelopes • Wedding Stationery
Continuous Stationery • Invitations • Folders • and much more ...

Broad Lane, Cottenham, Cambridge CB24 8SW
Telephone: **01954 251189**
Email: print@targetprint.org
Web: www.targetprint.org

*Holistic
Timeout*



Relaxing 45mins Back, Neck & Shoulder Massage
Thermal Auricular Therapy (Hopi Ear Candling)
Reflexology (Face or Feet)

On-Site Chair Massage

Indian Head Massage

Hot Stone Massage

Swedish Massage

Aromatherapy

Bookings & enquiries contact:
Astrid-VTCT Level 3 Diploma-
Phone 07546 094499
Based in Willingham



Cambs Property Bureau

LETTINGS & PROPERTY MANAGEMENT

Tel: 01954 260200 e-mail: enquiries@cpbm.co.uk

Website : www.cambspropertybureau.co.uk

Ward Solutions Ltd

We specialise in the installation of flue lining systems, wood burner's and fireplaces, 15 years experience.

We can supply you with a stove or install one supplied by you.

Other services include- chimney re pointing, smoke tests, And fitting pots and cowl.

HETAS registered

Call or email for a free survey

0800 357 92 91
01954 200 021

info@wardsolutions.co.uk



EDGAR FARRELL
— CONSTRUCTION —

WWW.EDGARFARRELL.CO.UK

NEW BUILDS/ EXTENSIONS/ CONVERSIONS
BATHROOM & KITCHEN FITTING

EDGARFARRELL2@YAHOO.CO.UK 07919800895

Becky's Fitness

Becky's Fitness on Facebook – drop me a message to find out more.

All Classes being held on-line Via Facebook Live, up to 10 classes per week for Just £20 per month.

Classes include Fitness Pilates, HiiT, Aerobics, Body conditioning & Cardio Dance

07905097961

becky@beckysfitness.co.uk

FIRST WEEK FREE





THE HOUND DOG HOTEL
Homely dog boarding in Willingham

Contact Mandy Booth
M: 07878661454
E: info@thehounddoghotel.co.uk

For more information and prices visit
www.thehounddoghotel.co.uk



DOWN TO EARTH ELECTRICAL LTD
info@down2electrics.co.uk
07709 084618

A Willingham based company offering full electrical services



ENTIRE
The Complete Gas Heating and Plumbing Company
Plumbing • Heating • Gas • Bathrooms
Water Softeners • Property Maintenance
Tel: 01954 204044 • Web: www.entiregroup.co.uk
Email: service@entiregroup.co.uk

elglaze *Your home. Our heritage.*
est. 1983

Windows - Doors - Conservatories & more

Casement Windows

Composite Doors

Bespoke Conservatories

Sash Windows

CONSERVATION AREA APPROVED

QUICK ESTIMATE

www.elglaze.co.uk/estimate

01954 770770 | www.elglaze.co.uk

FENSA MTC REGISTERED BBA BFRC

Acupuncture for well being and relaxation

Kaye Rooney Lic. Ac. MBAcC
Phone: 07593 058748
Email: kaye@kr-acupuncture
Visit: kr-acupuncture.com

British Acupuncture Council Member

professional standards authority
accredited register

Find me at **MERAKI**
Highgate Farm
Over Road
Willingham
CB24 5EU

COUNSELLING

Depression, anxiety, stress, bereavement, addiction, panic attacks, couples etc.

Experienced, qualified, NHS & private counsellor
Immediate appointments available
Bar Hill & Willingham

Telephone Mark on **07905 833288**
info@thecambridgecounsellor.co.uk
www.thecambridgecounsellor.co.uk

Willingham Mini Skips
Mini Digger Hire (with driver)



We provide a quality service at competitive prices to meet your personal requirements

For further information telephone
01954 261119 or 07774 197960

YOUR PERSONAL WEALTH. OUR PERSONAL RESPONSIBILITY.

At Tilney, we have been helping clients achieve their financial goals for more than 180 years. Whether you are saving for retirement, want to pass on your wealth or would like to have your investments managed by an expert, we can do the same for you.

To find out how we can help you, please call our Cambridge office on **01223 452 840** or email neil.trickett@tilney.co.uk for Investment Management or laura.ingram@tilney.co.uk for Financial Planning.

Investments carry risk – investors can lose money investing.
tilney.co.uk

TILNEY
PLANNING | ADVISING | INVESTING

VILLAGE DIRECTORY

Please notify *Willingham News* of any changes

Council	Parish Council (<i>See full details on page 10</i>)		01954 261027
	County Councillor	Tim Wotherspoon	timothy.wotherspoon@cambridgeshire.gov.uk
	District Councillor	Dawn Percival	07948 683599 / cllr.percival@scambs.gov.uk
	District Councillor	Bill Handley	01954 200287 / cllr.handley@scambs.gov.uk
Services	Police		101
	Surgery		01954 260230
	Dispensary for repeat prescription requests		01954 207602
	Library		0345 045 5225
	Pharmacy		01954 261787
	Over Surgery		01954 231550
	Urgent Care Cambridgeshire		111
Schools	Primary School	Mr Dave Morel	01954 283030
	Willingham Out Of School Club (3–6 pm only)	Mrs M Lenk	01954 283033
	School Governors Chairperson	Katy Stevenson	chair@willingham.cambs.sch.uk
	School Association	c/o school	01954 283030
	British School Trust	Ray Croucher	01954 261113
Children	Beavers, Cubs and Scouts	Matt Haigh	adventure@1stwillinghamsoutgroup.org.uk
	Honey Pot Pre-School (term-time only)	Mrs Kate Van Dort	01954 201567
	Koala Kidz	Mrs Edith Jeffrey	01954 260046
	Guides and Rangers	Lynn McGoff	willinghamguides@hotmail.co.uk
	Ladybird Borland's School Of Dance	Mrs L Borland	01954 203347
	Messy Church	Margaret Edney	07528 193858
	First Steps	Vicky Page	vickypage85@gmail.com
	TOPS (Baptist Church Toddlers Group)	Katy Gilbert	01954 261922
	Little Notes Music Group (0-4 years)	Lisa Adcock	07949 062360
	KFC Kid's Friday Club Years 1-6 (Baptist Church)	Lorriane Bald	01954 261189
Halls	Ploughman Hall Bookings	through Parish Council	01954 261027
	Wilford Furlong Centre		01954 261445
	The Octagon	Gillian Beal	admin@5folds.org.uk
	Baptist Bookings and Rentals	Emma Launchbury	01954 263108
	Willingham Social Club Bookings	Lynne Sadler	01954 260557
	Willingham Youth Centre bookings		willinghamsocialclub@gmail.com
			email: enquiries@willinghamyouthtrust.org
Local Representatives	Allotments	Sue Ayling	01954 260718
	Billavincea Lodge 8719	Mr M Scrivener	01480 413533
	Fen Edge Community Association	Eileen Wilson	chair@fenedge.co.uk
	Over & District Royal British Legion	Jane Matthews	07983 630265
			overanddistrictrbl@yahoo.com
	OWLS Community Car Scheme	Lorraine Hunt	07505 254363
	Willingham Action Group (WAG)	Mike Tidball	01954 260647
	Willingham Combined Charities	Kassia Bunnett	k.bunnett@googlemail.com
			07969 541095
	Willingham RBL Poppy Appeal Organiser	Graham Atherton	01954 260331
	Willingham Bee Group Chairman	Steve Smith	07795 215071
Clubs	Friends of Willingham Library (FOWL)		willinghamlibraryfriends@gmail.com
	Gardening Club	Mrs C Bailey	01954 260794
	WBC Youth club (Baptist Church Years 7-9)	Bev Thomas	01954 789230
	Willingham Dance Club	Teresa Weston	willinghamdanceclub@gmail.com
	Willingham Social Club	Lynne Sadler	01954 260557
			willinghamsocialclub@gmail.com
	Willingham Jam Club	Julian Eales	01954 201818
	Willingham Photography Club	Steve Harding	07595 668161
	Willingham Running Club	Monica Garcia	gcompass.monica@gmail.com
	Willingham Walkers	Mike Tidball	01954 260647
	Willingham Youth Club	Bonnie Twiss	bonnietwiss@me.com
	Women's Institute	Wendy Law	01954 202188
Sport	Angling	Colin Dodd	07773 719330
	Badminton	Sarah Custance	01954 202005
	Bowls Club	Ian Bissett (Sec)	ianbissett@gmail.com
			Willinghambowlsclubsec@gmail.com
	Cricket Club	Mr R Ambrose	01954 260446
	Cycling Club – www.willinghamwheels.com	Paul Knighton	07787 530394
	Ladies' Hockey	Teresa Hutchcraft	01954 260177
	Tennis Club	John Graham	01954 231968
	Willingham Diamonds Netball Club	Emma Byrom	01954 202481
	Willingham Running Club	Gerry Mears	07511 131645
	Willingham Sports Pavilion	through Parish Council	01954 261027
	Willingham Wolves (Boys & Girls Football)	Jamie Smith (Sec)	01954 261141
Churches	Mothers' Union (Branch Leader)	Mrs S Hayden	01954 260363
	Baptist Church	Emma Launchbury	01954 260538
	Methodists (Ministerial Contact)	Rev Simon Oliver	07554 202929
	Roman Catholic Priest	Rev Thomas J Walton	01480 462192
	Parish Church	Gillian Beal	admin@5folds.org.uk
		Simon Gill	01954 230434

Paying too much tax?
Paperwork a burden?
Accounts fee expensive?
Like a business review?

At **Uttridge Accounting** we understand your business and tax needs and provide a range of services to meet your requirements, including:

- Accounts Preparation
- Self Assessment
- Taxation Advice
- Business Start-ups
- Business Planning
- Payroll Services
- Online Accounting

For professional accounting expertise, attentive personal service and great value for money, contact us today.



ACCA

01954 263000

info@uttridge-accounting.co.uk
www.uttridge-accounting.co.uk

Selling or Letting your Willingham home for the best price takes experience, skill and commitment.



...four office coverage helps, too!

Ensure your home gets the coverage it deserves.

Call Tylers.

01223 214400
hello@tylers.net
tylers.net



SPECIALISING IN THE
SALE OF HOMES IN
WILLINGHAM AND THE
SURROUNDING VILLAGES

HOCKEYS
ESTABLISHED 1885



Vintage
travel

ESTABLISHED
1990

Your Local
Travel
Company

HANDPICKED
VILLAS WITH POOLS

A selection of beautiful individual villas
& houses with pools in tranquil settings
& areas of traditional local culture.

Call for a brochure or to speak to one
of our specialists **01954 261431**

or visit our website
www.vintagetravel.co.uk



GREECE • SPAIN • LANZAROTE •
BALEARICS • PORTUGAL • TURKEY •
FRANCE • ITALY • CROATIA



ABTA
ABTA No V5643