

# Willingham News



Photo: David Stevenson

See page 9 for the history of the Parish Clock

## Cottenham Computers

01954 593025

Call the experts for good honest advice



**We will come to your home or business to fix your computer**

### Got any of these issues?

- ✓ Computer crashing
- ✓ Network Wi-Fi connection Issues
- ✓ Computer infected with viruses
- ✓ Windows won't boot
- ✓ Can't access your email
- ✓ Can't access the Internet
- ✓ Computer running very slow

With over 16 years experience it is likely we have seen your problem before. We are happy to advise you free over the phone..

**We don't charge a fortune  
So give us a call TODAY! We wont bite!**

Working all day? Then we can collect and deliver FREE to and from your work place\*  
\* Within 10Miles of Willingham

We cover Willingham & surrounding towns & villages

*For all computer related problems give us a ring!*



[www.cottenhamcomputers.co.uk](http://www.cottenhamcomputers.co.uk)



# A1

## HOME AND GARDEN MAINTENANCE

Call 07775 725118  
or 01954 203569

## A.G.S

ASHBY GARDENING SERVICES

HOME: 01954 261038

MOBILE: 07984 755310

LOCAL, FRIENDLY, GARDENING SERVICE



# J & G BLINDS

## CONSERVATORY & WINDOW BLINDS



AWNINGS

SEALED UNITS

Tel: 01954 261149

Mobiles: 07847 559208 / 9

Email: [sales@jandgblinds.com](mailto:sales@jandgblinds.com)

## THE PLOUGHMAN HALL WEST FEN ROAD, WILLINGHAM

Book Willingham's village hall for your

Wedding Reception

Birthday Party

Private Function

Play or Musical Event

Club or Society Meeting

## The Ploughman Hall

Offers:

A large hall

Bar facilities (subject to licence)

A fully equipped kitchen

Disabled friendly facilities

Ample off-road parking

Check out our competitive hire charges and make your booking at the Parish Office (01954 261027)

The Ploughman Hall – Willingham's village hall



## The Foot Care Clinic Willingham

**Mrs Casey A. Javed** BSc(Hons) Podiatry, SRCh, MChS, HCPC/State Registered

**Mr. F.K. Javed** BSc(Hons) Podiatry, MChS, HCPC/State Registered

- General chiropody – nails, hard skin & corns
- Diabetic foot care
- Children's Feet – Growing pains, Verrucas, etc.
- Sporty Feet & associated injuries + pains
- Ingrowing toe nails – surgical option available
- Custom made Orthotics/ insoles
- Biomechanics & Gait analysis



**New Clients Always Welcome**

Saturday Appointments & Home Visits Available

Willingham Medical  
Practice, 52 Long Lane  
Willingham CB24 5LB

T: 01480 464507  
or 07807 505534

Scrivens Opticians  
1 Crown Place, St. Ives  
PE27 5PD

T: 01480 301337  
or 07807 505534

[www.stivespodiatry.co.uk](http://www.stivespodiatry.co.uk)

*Willingham News*, is a subsidiary of Willingham News Limited and is edited and distributed entirely by volunteers. We do our best to ensure the accuracy of content of all submissions but reserve the right to edit or omit articles at our discretion. If you wish to join our team or perhaps you have articles to submit, please get in touch at: [willinghamnews@btinternet.com](mailto:willinghamnews@btinternet.com) (attachments please for copy – NOT incorporated into the email. No pdf files. Paper copy may be left at the library) or speak to one of us. The Editorial Team comprises: Liz Cosford, Jane Dowle, Wendy Law, David Stevenson and Trevor Weston.

We welcome contributions on subjects of local interest.

**The Deadline is 8th of Each Month.**

### Bin Collections – Fridays

**6 May (Saturday) Blue and Green**

**12 May Black**

**19 May Blue and Green**

**26 May Black**

**Our PCSO (Police Community Support Officer) is:**

**Thomas Baugh**

**To contact local police, phone 101 or email: [histon.npt@cambs.pnn.police.uk](mailto:histon.npt@cambs.pnn.police.uk)**

### PLEASE NOTE:

Back issues of *Willingham News* from June 2013 (and intermittently before that) up to and including the current issue are available on the Willingham Life website run by WAG:

[www.willinghamlife.org/page/willingham-magazine-back-issues](http://www.willinghamlife.org/page/willingham-magazine-back-issues)

### Clarification

The reference in last month's magazine to a photograph of an egret on the front cover was not an April fool. The pictures were changed at the proof reading stage as was the wording but unfortunately at the print stage some of the original wording remained.

### Advertising

Advertising is sold on an annual basis for an insert into 12 issues beginning in January. Send any advertising queries or copy to: [advertising.wnews@yahoo.co.uk](mailto:advertising.wnews@yahoo.co.uk), marking your e-mails Adverts. The *Willingham News* team wishes to thank all the advertisers for their support and interest. They play a vital role in maintaining this publication and also in our community as local businesses supplying goods and services. If you contact an advertiser, please mention that you saw their advertisement in *Willingham News*. Thank you all very much.

## CONTENTS

### MAY NEWS

A Big Sing.....	5
Bobtail .....	15
Fen Edge Festival.....	19
Honeypot Pre-School.....	19
House of Prayer .....	13
Looking Back – 1947 Floods.....	19
MS Society Cake Break.....	7
<i>My Fair Lady</i> .....	7
Nature Notes.....	17
Old Faithful.....	9
Old Willingham.....	16
Over Carnival.....	8
Pets' Corner.....	11
Poem – <i>May</i> .....	7
Poem – <i>Mystery</i> .....	5
Reader's Letter.....	15
Social Club.....	15
Summer Fete.....	7
Willingham Beer Festival.....	5
Windmill Open Days.....	17

### Clubs and Groups

Bowls Club.....	9
Gardening Club.....	7
Jazz Club.....	8
Photography Club.....	7
Women's Institute.....	5

### Quizzes

Crossword.....	8
Friends of the Library Book Quiz.....	8
Younger Readers' Corner Quiz.....	8
Answers.....	17

### MONTHLY ITEMS

Bin Collections.....	3
Christians Together .....	12/13
Directory.....	23
Library.....	16
Medical Practice.....	11
Parish Council.....	10
Pastoral Letter.....	13
What's On.....	21

**PS FIXINGS**  
FASTENERS & FIXINGS FOR TODAY'S CONSTRUCTION

Supplying:  
Paslode/Everbuid/Trend/Makita/Dewalt/Bosch/Milwaukee/Panasonic  
Handtools/Power tools/Fasteners/Fixings/Abrasives  
Powertool Repair Service/ Saw Blade Sharpening Service

**FREE NEXT DAY DELIVERY!**  
TEL: 01954 206980 MOB: 07789 405909  
EMAIL: sales@psfixings.co.uk - WEB: www.psfixings.co.uk  
18 BERRYCROFT, WILLINGHAM, CAMBRIDGESHIRE, CB24 5JX

*English Rose*  
BEAUTY HOUSE

**BEAUTY, RELAXATION AND A WARM WELCOME..**  
Specialists in Shellac nails, Manicures & Pedicures, Spray Tanning, Hair removal, Facials and Massage.  
Stockists of Elemis Skincare, Sp@home and much more...  
Gift Vouchers now available online at [www.englishrosebeautyhouse.co.uk](http://www.englishrosebeautyhouse.co.uk)

16 Berrycroft, Willingham, Cambridge CB24 5JX. Tel: 01954 261176

**MARK BIRD ELECTRICAL SERVICES**

**Mark Bird**  
Electrical contractor  
NICEIC Domestic Installer  
Part P Approved  
Tel: 01480 843008  
Mobile: 07961 505189  
Email: mbird494@btinternet.com

**JB ALTERATIONS** General Building & Plastering Services  
**Jon Bullock**  
30 Rook Grove, Willingham, Cambridge CB24 5EZ  
Tel: 01954 261838 Mobile: 07867 965688  
Email: jon.jbalterations@gmail.com  
plastering/dry lining/screeding/rendering/general building

**CHIMNEY SWEEP**  
**J. L. Wight**  
Guild of Master Sweepers, Certificates issued  
Advice given/problems solved  
**01954 253315**  
www.camsweep.co.uk 9 Cow Lane, Rampton

*The BUSHEL BOX* Est. 2011  
*Farm Shop*

Farm grown fruit, local vegetables, eggs, preserves, fruit juice, cakes and more  
Coffee shop open at weekends  
Open Tues - Sat 10 - 6 and Sun 10 - 4  
Closed Monday  
At Manning & Son, Station Rd, Willingham CB24 5HG  
Tel: 01954 206015  
[www.bushelboxfarmshop.co.uk](http://www.bushelboxfarmshop.co.uk)

**WILLINGHAM MOTORS LTD**  
YOUR LOCAL INDEPENDENT GARAGE FOR ALL SERVICING/REPAIR REQUIREMENTS, MOT TESTING, AIR CONDITIONING, DIAGNOSTIC SOFTWARE, EXHAUSTS, TYRES  
CAR SALES - P/X WELCOME CAR/VAN STOCK LOCATOR  
QUALITY VEHICLES BOUGHT FOR CASH FREE COURTESY CARS  
Tel: 01954 260467/206566 E-mail willinghammotors@aol.com www.willinghammotors.co.uk

**ALAN'S CARPETS**  
CARPETS & VINYL FLOORING  
since 1973  
Showroom: No. 1 Station Road, Swavesey  
or samples to your home  
CALL 01954 232298

**WILLFLOWER FLORISTS**  
134 Rampton Road  
WILLINGHAM  
Tel: 01954 260 831  
Fresh Cut Flowers, Bouquets, Wreaths, Wedding Flowers and Arrangements

**P. LOVERIDGE**  
Carpentry & Locksmith Services  
TEL: 01954 202907 MOB: 07811 158018  
EMAIL: PAULLOVERIDGE31@GMAIL.COM  
ALL ASPECTS UNDERTAKEN  
FITTED WARDROBES LOCKS REPAIRED & REPLACED  
ALCOVE CLIPBOARDS EMERGENCY ACCESS  
KITCHENS FITTED LOCKS KEYPED ALIKE  
FIRST & SECOND FIX HOME SECURITY UPGRADED

**PAUL THOMPSON**  
PAINTING & DECORATING, TILING & PROPERTY MAINTENANCE  
TELEPHONE : 07792874926 / 01954 203913

**GUITAR/UKULELE & PIANO LESSONS**  
All styles catered for  
EXPERIENCED TEACHER  
(Member of the Registry of Guitar Tutors)  
Contact Helen on: 07798 526084  
or visit [www.guitarlessons-cambridge.co.uk](http://www.guitarlessons-cambridge.co.uk)

**SUTTON TREE SERVICES**

- HEDGE MAINTENANCE
- TREE REMOVAL, FELLING & REDUCTIONS
- GENERAL PRUNING
- STUMP REMOVAL
- FULLY INSURED
- NPTC QUALIFIED

Please call to discuss your requirements or to arrange a free quote.  
Paul Young 07765 223 692 or 01353 775 076

# Willingham Women's Institute

theWI  
INSPIRING WOMEN

The next meeting will be on **Monday 8 May** at 7 30 pm in the Social Club:

*Sign Language* – Elissa Tregear

New members are always welcome; please contact Wendy on 202188 if you are interested. Come for a taster – we have some great meetings lined up:

**12 June** – *Painting on Glass* with Anne Datson

**10 July** – Summer Party

## WI News

### March meeting

This was our Annual General Meeting. As well as celebrating members' birthdays, we received notices about various upcoming WI events, and reports from the Committee and President. The Treasurer presented the Accounts and we sang *Jerusalem*. Appreciation was expressed by the members for the Committee's hard work, and by the Committee for the members' continued support!

Members undertook an activity to celebrate Women's Day and this was followed by wine and a light buffet.

## Mystery

Mysteries suspended like fireflies  
Seeds pregnant with stories twirl like maple wings.  
The riddle that powers a body of flesh  
That makes skin soft like snowdrop  
Ripple  
That makes a bundle of feathers  
Vibrate  
With sound mysterious.  
Water in the bladder of the earth  
Rises  
Through crevices, caverns and fissures  
To the skies and  
Showers us with breath.  
From the deep recesses of the alien world beyond the skies  
A globe of light makes a beeline through darkness and  
Bathes our skin in rainbow.  
And on the thin edge of a blade  
Precarious  
You and me meet and circle one another  
Slowly  
Our eyes drink  
The mysterious dance of the world.

*Josie Ferrante*

## A BIG SING

On Saturday, 25 March, Over Singers and Drummers were hosts, at our Baptist Church, to a good number of local residents, including youngsters, who had given up a beautiful, sunny, spring afternoon, to learn and join in with a selection of interesting songs, some accompanied by guitar and one with African 'djembe' drums. Their sacrifice was well worthwhile!

Over Community Singers and Drummers meet at the Methodist Church, The Lanes, Over, on Thursday evenings during Term time but on **Thursday, 11 May**, at 7 30 pm the Singers will be rehearsing at our Baptist Church. We do not hold auditions and anyone is welcome to join in so please do come along and join us – you'll have a great time!

For further details, contact Simon on 01954 202377 or e-mail – [enquiries@overcsd.org](mailto:enquiries@overcsd.org)

# Willingham Beer Festival

29th June - 1st July 2017  
at Willingham Social Club

## 25+ beers & ciders

brought to you by The Bank Micropub

## Live local music

Alchemy  
Cat's Whiskers  
Keith Pearson  
Steve Lockwood

plus BBQ, soft-drinks  
& wine available



Supported by the Willingham Action Group  
<http://willingham.beer>

Homestay Consultancy

We are always on the lookout for local friendly **host families**

If you are able to offer single or twin room accommodation to international students, we would love to hear from you.

Please call  
**01223 367450**  
or email us  
**[info@homestayconsultancy.com](mailto:info@homestayconsultancy.com)**

[www.homestayconsultancy.com](http://www.homestayconsultancy.com)

# Karen

## BEAUTICIAN

DAYTIME & EVENING APPOINTMENTS

95 Rampton Road  
Willingham  
Cambridge CB24 5JQ  
Tel: 01954 260375  
Email: karenench@hotmail.com  
www.karenbeautician.co.uk



ARK FACIALS  
SHELLAC/OPI  
MANICURES  
AND PEDICURES  
ST. TROPEZ  
SPRAY TAN  
AROMATHERAPY  
MASSAGE  
TINTING  
HOPI EAR  
CANDLES  
EAR PIERCING  
MAKEUP

## O'MALLEY SOLICITORS

### Family Law Specialists

Divorce • Matrimonial Property & Finances • Co-habitation  
Disputes • Civil Partnership Dissolution • Children Matters  
Prenuptial Agreements. Domestic Injunctions  
Separation Agreements

For a sympathetic and sensitive approach to the most emotional of  
legal problems, contact us on **01954 202075**.

84 Rampton Road, Willingham, Cambridge, CB24 5JQ  
Tel: 01954 202075 E-mail: omalleysolicitors@googlemail.com

Authorised and Regulated by the Solicitors Regulation Authority  
SRA No: 318339

## Universal Fencing Co Ltd

Established 40 Years Tel: 01954 231335

[www.universalfencing.co.uk](http://www.universalfencing.co.uk)  
SUPPLY ONLY OR SUPPLY AND ERECT  
FREE ESTIMATE



Palisade



Featheredge



Field Gates



Security Fencing

Unit 11 Norman Way Ind Est, Over, Cambridge, CB24 5QE  
Open: MON-FRI 8am - 5pm

Commercial, agricultural, industrial & domestic  
Fencing contractors



## Church End Carpet & Vinyl Centre

We are a family run business, established in Cottenham in January 1982

We offer a comprehensive range of quality carpets, vinyls and laminate  
flooring at highly competitive prices with a great service and fitting.

76 High Street  
Cottenham  
Cambridge  
CB24 8SD  
Email: sales@churchendcarpets.co.uk  
Tel: 01954 250287  
[www.churchendcarpets.co.uk](http://www.churchendcarpets.co.uk)

Open: Monday, Tuesday, Wednesday, Friday: 10:00 - 18:00  
Saturday: 10:00 - 17:00



## we've got your home improvements covered

### PLUMBING & HEATING

- ▶ fit a new boiler ◀
- ▶ upgrade your heating system ◀
- ▶ annual service for your boiler ◀

### BUILDING SERVICES

- ▶ bathroom & kitchen installation ◀
- ▶ new build ◀
- ▶ home renovation ◀

call: **01954 782920**  
or visit: [www.ijcbuildingservices.co.uk](http://www.ijcbuildingservices.co.uk)



IJC is a family run Cambridgeshire  
business with over 30 years' experience.

We offer a comprehensive range of  
domestic and small commercial works  
across all forms of building, plumbing,  
heating and renewable services.

45 Viking Way, Bar Hill,  
Cambridge, CB23 8EL

# JASON KIRBY

## Professional Painting & Decorating Ltd

All Aspects of Internal &  
External Decorating Undertaken.  
Period, Residential & Commercial Properties.  
City & Guilds Qualified.  
Full Public Liability Insurance.  
For Quality & Reliability At Competitive Rates  
References Available.

A local established business built on reputation  
and recommendations

Tel/Fax: 01954 211775  
Mobile: 07966 174431  
[jasonkirbyltd@gmail.com](mailto:jasonkirbyltd@gmail.com)






A Professional Service from Start to Finish



# WILLINGHAM GARDENING CLUB

Meetings are held at the Social Club on the first Monday of each month (except January) and start at 7 30 pm until about 9 pm. There is usually a speaker and a plant raffle.

The Club welcomes new members at any of our monthly meetings. If you are interested, just come along to speak to a committee member informally. There is a small charge of £2 for non-members or, if you decide that you wish to join, a modest annual subscription of £14.

Call Celia on 01954 261394 or just turn up to a meeting.

### Next Meeting:

**Monday 1 May** at 7 30 pm

Speaker – Suzsa Serer from Spicesoticplants at Saffron Walden with advice on growing tropical plants in the UK.

Reminder to members: Subscriptions for 2017/18 year are now due.

### Trips for 2017

The Club is pleased to announce that all four trips for this year have now been fully subscribed.

**Saturday 2 September.** Advance notice of date for Willingham Horticultural and Craft Show. Full details will be published in *Willingham News* at a later date.

## Willingham Photography Club

Our Club meets every month in the Baptist Church. We aim to learn more about photography and enjoy ourselves.

The next meeting will be on:

**15 May at 8 pm**

Review of Fashion assignment photos

Coffee

Introduction to June assignment

*Contre Jour/Silhouette*

Technical questions and answers

We cordially invite anyone who enjoys photography to come along and see what is on offer.

Your expertise level does not matter; nor does the nature of your camera.



If you are over sixteen and would like to model for the Club

Please ring Stephen Salmon on 01954 260875

Any further questions, please contact:

Anita Salmon 01954 260875

Christopher Cross 01954 260790

*In the meantime, do have a look at our website on*

[www.WillinghamPhotoClub.org.uk](http://www.WillinghamPhotoClub.org.uk)

## MAY

May is like a singing bird  
delighting in the floral show.  
In the hedgerows and gardens  
flowers bloom wherever I go.

May has laid her floral carpet  
step gently near it as you go.  
May is like a singing bird  
delighting in the flower show.

*Christine Lacey*



## Cake Break

**Friday 26 May at  
Willingham Baptist Church**

10 am – 12 noon

6 30 – 8 pm

If you are able to make or donate cakes, please contact

Emma on 07814 321614 or  
[emmalaunchbury@hotmail.co.uk](mailto:emmalaunchbury@hotmail.co.uk)

Please come along and join us for a  
cup of tea and slice of cake.

All proceeds will be donated to the  
MS Society.



## Willingham School Association

### SUMMER FETE

**Saturday 20 May 2 – 5 pm**

**At the Primary School**

*Come along for a fun-filled family afternoon*

## My Fair Lady

The Over Players are pleased to announce that  
This wonderful show is coming to

Over Community Centre,  
The Doles, Over CB24 5NW  
**WEDNESDAY 31st May – SATURDAY 3rd June 2017**  
**AT 7.30PM**  
**SATURDAY MATINEE AT 2.30 P.M.**

**BOX OFFICE OPENS 1st APRIL 2017**  
**Adults: £10; Senior Citizens: £9; Children: £7.50**

To book your tickets visit [www.overplayers.uk](http://www.overplayers.uk) (no booking fee)  
or call 07521 099146

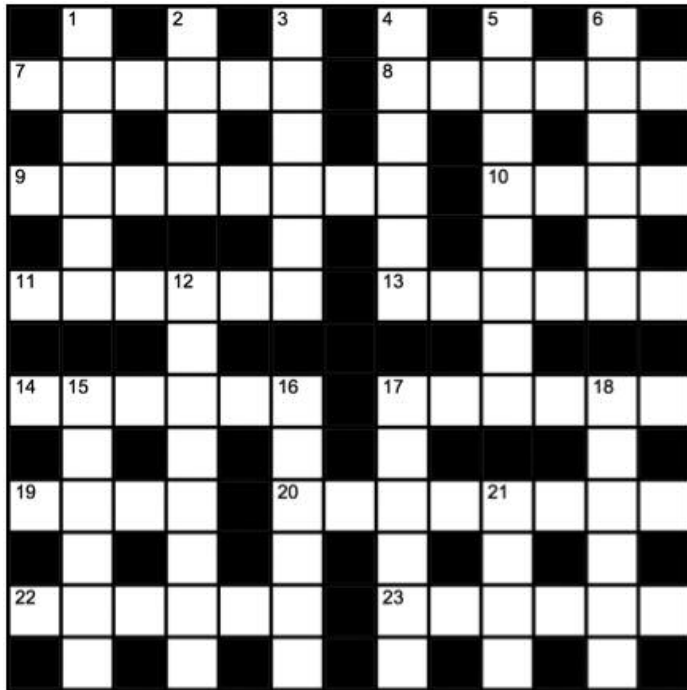
We will be one of the first groups in the U.K. to perform this glorious musical in six  
years, as no-one has been able to obtain the licence – until now!

**DON'T LEAVE IT TOO LATE TO GET YOUR TICKETS – this show is proving  
to be very popular**



# Crossword by Willow.

Answers on page 17.



## Across

- 7 Brightly-coloured 19 (6)  
 8 Complete (6)  
 9 Nocturnal 19 (5,3)  
 10 19 chess piece (4)  
 11 Sign (6)  
 13 Fixed (6)  
 14 19 infection (6)  
 17 19 not universally admired (6)  
 19 Prison sentence (4)  
 20 Occasionally (3,3,2)  
 22 Fastening material (6)  
 23 Send to Coventry (6)

## Down

- 1 19 on the Wharf? (6)  
 2 Sir Christopher 19 (4)  
 3 Amble (6)  
 4 Wizard 19 (6)  
 5 Silence of the Lambs' Clarice 19 (8)  
 6 Colourful passerine 19 (6)  
 12 Water 19 from New Zealand (4,4)  
 15 Young cow (6)  
 16 Afro-Eurasian 19 with crown (6)  
 17 Diving 19 (6)  
 18 Smells (6)  
 21 River 19 (4)

## Over Carnival

### To Over and Beyond

**Saturday 15 July 2017**

The Over Carnival team would like to invite Clubs/Organisations to join our Parade.

This year our theme is Space – 'To Over and Beyond' which hopefully promotes many ideas for your float.

At the same time of being part of a fun Parade you can also be raising money for your Club/Organisation. We have a bucket collection around the route and this money is then divided between all the floats: a fun way of raising money.

Please contact us at [committee@overcarnival.co.uk](mailto:committee@overcarnival.co.uk)

*Jeanette and the Carnival Team*

# Young Readers' Quiz



Answers on page 17.

1. What is the common name for the disease 'rubella'?
2. Pudsey Bear is the mascot for which charity?
3. What is the name of the traditional afternoon 'rest period' taken in Spain?
4. How many stars are there on the American flag?
5. What is James Bond's secret agent number?
6. How many feet are there in a yard?
7. What does a 'stitch in time' save?
8. 'Bertie Bassett' is associated with which sweets?
9. How many edges does a cube have?
10. What science is the study of the Earth and the rocks of which it is composed?

## Friends of Willingham Library Book Quiz

Answers on page 17.

Continuing the spring-like theme this month. Who wrote the books with the following titles?

1. *Flowers for the Judge*
2. *The Daffodil Sky*
3. *Daisy Miller*
4. *Pure as the Lily*
5. *Rumpole and the Primrose Path*
6. *Violets are Blue*
7. *Agatha Raisin: Pushing up Daisies*
8. *Flowers for Algernon*
9. *The Daffodil Mystery*
10. *The Name of the Rose*

## WILLINGHAM JAZZ CLUB

**May 7 – JAZZ FRIENDS with Pete Lay**

**Social Club Sunday lunchtime**

**12 30 pm – 3 30 pm**



## OLD FAITHFUL

Many people in Willingham will be of the opinion that St Mary's Church owns the clock which sits two-thirds up the tower. However it was paid for by public subscription to mark the Golden Jubilee of Queen Victoria and since then it has been maintained by and owned by the Parish Council.

It was manufactured and installed by W Potts & Son of Leeds in 1887. The mechanism which is as large as a small van but heavier, sits in a room in the bell tower, reached by a narrow spiral staircase from the ringing chamber. The hands and chimes are driven through a complex system of levers and rods. The mechanism is entirely mechanical and like Big Ben relies for accuracy on a large pendulum. Given its age, it is remarkably accurate but this can be affected by various factors such as a build-up of dust or grit in some of the moving parts or even the weather. It does have inbuilt temperature compensation but this can take a day or two to settle down and if there are rapid changes in temperature, it can affect the accuracy.

Exactly as with Big Ben accuracy is maintained by applying small weights to the top of the pendulum. It may seem counter intuitive but adding weights speeds up the clock and removing them slows it down. By adding weight there is a small shift upwards in the centre of gravity in the pendulum and by removing them a small shift downwards. The lower the centre of gravity is set, the longer the swing. Now the changes of course are very small. The pendulum is huge and the weights, tiny; and just one ounce changes the speed of the clock by around two seconds per day.

The task of making these adjustments is given to a Parish Councillor. Fortunately, several of them live close enough to be able to see the dial from their homes as well as hear the chimes. No doubt when it was installed the hands and the chimes were synchronised. Over time, however, there has been some slight twisting in the brass drive rods and it is now impossible to achieve exact synchronisation. The same is true of the chime mechanism which depends on large brass wheels with slots cut into their perimeter. The chimes can be exactly right at midday but not exactly right all day or on the quarter hour.

The compromise used is to keep a log of the variance in seconds between the noon day pips on the radio and the first bong of the midday chimes. If the log shows the clock to be gradually gaining or losing time then a brave soul climbs the narrow spiral staircase and makes the necessary adjustment. Sometimes Old Faithful will go for months without need of adjustment but sometimes it will keep changing its mind on a daily basis. I suppose you are entitled to do that once you get past a hundred.

Unlike Big Ben, which is very carefully regulated, we try to keep the parish clock within an accuracy of one minute and very often it is a lot closer than this. Not good enough if you are flying a jet fighter or even boiling an egg but closer than it used to be when a previous clock minder, who did not even have his own watch, used to ask the time from someone in the street. He would then head into the church and climb the tower to set the time manually. Strangely, the clock was always two minutes slow.

Over the years there has been one significant change. When originally installed, the clock itself and the chimes were driven by weights that provided the energy as they

descended towards the floor of the bell tower. Of course, what goes down needs to go up and that meant regular hand winding. The winding is now done by electric motors but I will leave the final word with a family that did the job manually for many years.

'There were three clock weights; one for the mechanism which was rather smaller than the other two, one for the hours and one for the quarter hours. When fully wound up they sat in a wooden case in the corner of the clock chamber; at maximum extension they sat in the sand pit at floor level in the belfry. It took about 60 turns of the handle to wind the heavier weights up. When young and stupid, I could do it in one go, doubt I could now.'

*Phil King*

Front Page Photo: taken by David Stevenson when Linda King was adjusting the clock to British Summer Time.

---

## Willingham Bowls Club

We have teams in the Ely & District Afternoon league playing Mondays and Fridays, as well as a Mens team and two Mixed teams in the Business House evening leagues. May fixtures are as below;

### Ely & District Afternoon League starts 2 pm

Girton	Away	Friday 5 May
Bottisham	Home	Monday 8 May
Soham B	Away	Friday 12 May
Longstanton	Home	Wednesday 15 May
Girton	Home	Friday 19 May (Frank Turner Cup)
Haddenham	Away	Monday 22 May

### Business House Evening League starts 6 30 pm

#### Men' Team

Post Office A	Away	Wednesday 3 May
Longstanton	Home	Wednesday 10 May
Great Chesterford	Away	Thursday 11 May
Beach A	Home	Wednesday 25 May
CUP	Away	Wednesday 31 May

#### Mixed Team A

Post Office	Away	Wednesday 3 May
Willingham B	Home	Tuesday 16 May
Girton B	Away	Wednesday 17 May
Girton A	Home	Wednesday 24 May

#### Mixed Team B

Great Chesterford	Away	Thursday 4 May
Willingham A	Away	Tuesday 16 May
City	Home	Monday 22 May
Girton B	Home	Wednesday 24 May
CUP	Away	Wednesday 31 May

Every Sunday morning from 10 am – 12 pm the club has a social roll up where anyone interested in playing bowls can come along and try, all you need is flat soled shoes.

For more information please contact Terry Buckley (Secretary) [terry.buckley@virginmedia.com](mailto:terry.buckley@virginmedia.com)  
01954 201802

# From the Parish Council

[www.willingham-pc.org.uk](http://www.willingham-pc.org.uk)

## The Community Governance Review: Willingham's Boundary with Over

The comprehensive review of the facts in last month's *Willingham News* concerning the Community Governance Review has, no doubt, helped to clarify this issue.

There is still time to take part in this important consultation. The deadline is 16 May. Don't forget to have 'your say'! This can be done by completing a short online questionnaire at: [bit.ly/2kFNx3w](http://bit.ly/2kFNx3w).

If you would prefer to complete a hard copy of the questionnaire please contact the Parish Office (01954 261027).

## Annual Parish Meeting: on Wednesday 17 May, 7 30 pm, in The Octagon

This meeting is open to all residents of Willingham. It provides an opportunity to discover what the Parish Council has been working on over the last year in its efforts to represent, as far as possible, the needs of the village. Constructive discussion can highlight challenges which the Parish Council might address in its future work programmes.

Reports will also be available from the many community groups and organisations which contribute to Willingham's quality of life.

### A14 Upgrade:

A recent (30 March 2017) 'Highways England' press release offered the following information on the A14 works:

- Narrow lanes, temporary speed limits, cones and barriers currently allow workers to build accesses for construction traffic and carry out vegetation clearance ahead of the bird nesting season while keeping disruption on the road to a minimum as well as keeping road users safe. All the trees that have been cut down are being used as biomass for local energy production. Replacement trees will be planted when the project nears completion.
- CCTV cameras installed along the A14 will be used to actively manage disruption to road users from a dedicated control room within the scheme's main compound.
- Archaeology: excavations will be taking place across the scheme throughout 2017. Remains found so far show evidence of settlements or industrial activity, including a well-preserved series of Romano – British pottery kilns, carving tools, and the remains of a cow! Once the work is finished, findings will be presented to the local community.
- Endangered water voles at Alconbury Brook will be moved to a new habitat in mid-spring.

To offer a better understanding of the upgrade the Parish Council is arranging for the 'A14 Mobile Unit' to visit the village. The confirmed date will be published when this is known. 'Highways England' also has a customer contact centre should you have any enquiries: 03001235000

### Northstowe:

The most recent 'Northstowe Community Update' (March 2017) reported that:

- Homebuyers were expected to move in during April.
- Surface water and foul drainage systems are mostly completed.
- Gas, water, electric works are mostly complete. BT and Virgin networks are next to be installed.
- Trimming and tidying of verges continues.
- Five play areas for Phase 1 are to be designed by Randall Thorp.
- All five Phase 1 house builders have had their first parcels of land approved. They will begin development as the year goes on.
- Planning permission for Phase 2 has been granted following revised proposals for affordable housing. Phase 2 includes 3500 more homes and community benefits valued at £73 million. These include a town centre, a secondary school, two primary schools, sports facilities, recreation spaces and the Southern Link Road.

### Thursday 4 May – County Council and Mayoral Elections:

Here is another important date to remember as the results will impact on this area. You will have the opportunity to elect County Councillors for the new Cottenham and Willingham division as well as the first Mayor for the newly created Cambridgeshire and Peterborough Combined Authority.

### Councillor Resignation:

Alan Slater has resigned from the Parish Council for personal reasons. Alan has made important contributions to the recent work of the Council, most notably with respect to local policing activity. The Council thanks Alan for his service.

Should sufficient numbers of electors request it a by-election can be arranged to appoint a replacement for Alan Slater. If this does not happen it will then be possible to co-opt a new Councillor. Look for further details in future copies of the *Willingham News*!

Parish Council meeting dates are published on the website, the notice board outside the Public Hall in the High Street and at the Library. Dates are listed below. Members of the public are welcome to attend and speak briefly or ask questions. Names will be taken down at the beginning of each meeting, together with the electoral register number, to ensure everyone has a fair chance to speak within the allowed time (15 minutes in total for all speakers – 3 minutes max per person).

Meeting Dates: **3 May, 17 May (Annual Parish Meeting), 7 June.** The meetings are held in the Octagon starting at 7 30 pm.

The Parish Council office is open Monday to Thursday from 10 am – 1 pm, except Bank Holidays. There is an answer-phone service outside office hours.

The contact details are: Parish Council Office, Ploughman Hall, West Fen Road, Willingham CB24 5LP.

Tel. 01954 261027; E-mail [clerk@willinghamparishcouncil.gov.uk](mailto:clerk@willinghamparishcouncil.gov.uk)

Clerk: Mrs Mandy Powell

### Contact Details:

Your current Parish Councillors and their contact details (in alphabetical order) are:-

J Anderson		<a href="mailto:cllr.anderson@willinghamparishcouncil.gov.uk">cllr.anderson@willinghamparishcouncil.gov.uk</a>	01954 203344
A Cook	Lead Councillor Greens and Boundaries	<a href="mailto:cllr.cook@willinghamparishcouncil.gov.uk">cllr.cook@willinghamparishcouncil.gov.uk</a>	01954 260325
R Croucher	Parish Council Chairman	<a href="mailto:cllr.croucher@willinghamparishcouncil.gov.uk">cllr.croucher@willinghamparishcouncil.gov.uk</a>	07881 521041
J Harding		<a href="mailto:cllr.harding@willinghamparishcouncil.gov.uk">cllr.harding@willinghamparishcouncil.gov.uk</a>	01954 261520
N Harris		<a href="mailto:cllr.harris@willinghamparishcouncil.gov.uk">cllr.harris@willinghamparishcouncil.gov.uk</a>	07792 611226
L King		<a href="mailto:cllr.lking@willinghamparishcouncil.gov.uk">cllr.lking@willinghamparishcouncil.gov.uk</a>	01954 260780
P King	Parish Council Vice Chairman	<a href="mailto:cllr.pking@willinghamparishcouncil.gov.uk">cllr.pking@willinghamparishcouncil.gov.uk</a>	01954 260780
D Law	Planning Committee Chairman	<a href="mailto:cllr.law@willinghamparishcouncil.gov.uk">cllr.law@willinghamparishcouncil.gov.uk</a>	01954 202188
R Manning		<a href="mailto:cllr.manning@willinghamparishcouncil.gov.uk">cllr.manning@willinghamparishcouncil.gov.uk</a>	01954 261235
B Mansfield		<a href="mailto:cllr.mansfield@willinghamparishcouncil.gov.uk">cllr.mansfield@willinghamparishcouncil.gov.uk</a>	01954 261540
S Mellows	Lead Councillor Cemetery	<a href="mailto:cllr.mellows@willinghamparishcouncil.gov.uk">cllr.mellows@willinghamparishcouncil.gov.uk</a>	01954 270063
J Smith	Lead Councillor Leisure and Amenities	<a href="mailto:cllr.smith@willinghamparishcouncil.gov.uk">cllr.smith@willinghamparishcouncil.gov.uk</a>	01954 261141
R Tassell	Lead Councillor Halls	<a href="mailto:cllr.tassell@willinghamparishcouncil.gov.uk">cllr.tassell@willinghamparishcouncil.gov.uk</a>	07974 673836
J Watson		<a href="mailto:cllr.watson@willinghamparishcouncil.gov.uk">cllr.watson@willinghamparishcouncil.gov.uk</a>	01954 200245



## WILLINGHAM SURGERY & LONGSTANTON BRANCH SURGERY

Reception Tel: Willingham 01954 260230 Longstanton 207600 Dispensary 207602

District Nurse Team: 01223 726469 Option 2 Health Visitors: 01954 207612

Out of hours cover: Ring 111 Website: [www.willinghammedicalpractice.nhs.uk](http://www.willinghammedicalpractice.nhs.uk)

**CQC Inspection** The Care Quality Commission (CQC) has officially rated us as 'GOOD' following an inspection on 12 December. The inspection took place at both Willingham and Longstanton Surgeries and we are very proud of the report. We would like to take this opportunity to thank our patients and the PPG for their support and input. The full report is available on the CQC website and also via the link on our website CQC page.

**Out of Hours Care** Please remember to phone 111 if you require medical attention when the surgery is closed. Please remember that Accident & Emergency is intended for life threatening conditions or if you are likely to need an X-ray.

**Self-Care Medication** It is very helpful if some minor conditions are treated with over-the-counter medicines. Why not call into our Willingham Pharmacy and stock up your medicine cabinet?

**Carers' Support Meetings** Our next meetings at Willingham Surgery are on **3 May, 7 June** and **5 July**, 2 – 4 pm. Please come along and get some free support and advice.

**Cambridgeshire Hearing Clinics** The next Hearing Aid Clinics at Willingham Surgery are **17 May, 21 June** and **19 July** 2 – 4 pm. No appointment necessary. Come along for your free NHS hearing aid batteries and help and advice regarding hearing loss.

**The Foot Care Clinic at Willingham Surgery** run by Mrs Casey Javed is every Monday and some Wednesday mornings. For appointments please call **01480 301337** or 07807 505534 or visit [www.stiveschiropody.co.uk](http://www.stiveschiropody.co.uk).

**Relate Cambridge** is now offering counselling for couples and individuals at Willingham Surgery. The appointments will be on a Tuesday from 10 30 am to 12 30 pm. For more information or to book an appointment, contact Relate Cambridge on 01223 357424 or visit [www.relatecambridge.org.uk](http://www.relatecambridge.org.uk)

**New Doctor** We are very pleased to announce that Dr Samantha Brown will be joining the Practice in May.

**Acknowledgements** We would like to extend our grateful thanks to the families and friends of Ms Minchella for their generous donation to our surgery equipment fund in memory of their loved one who passed away recently.

**PLEASE REMEMBER TO CANCEL YOUR APPOINTMENT IF YOU NO LONGER NEED IT.**

*Sharon Unwin – Practice Manager*

### WILLINGHAM SURGERY NORMAL OPENING HOURS

Monday	8 30 – 1 00	2 30 – 6 00
Appointments	8 30 – 11 00	3 00 – 6 00
Tuesday	8 30 – 1 00	2 00 – 6 00
Appointments	8 30 – 11 00	3 00 – 5 30
Ante Natal/Baby Clinic		2 00 – 4 00
Wednesday	8 30 – 1 00	2 00 – 7 00
Appointments	8 30 – 11 00	4 30 – 7 00
Thursday	8 30 – 1 00	Closed from 1 00 pm
Appointments	8 30 – 11 00	Half day
Friday	8 30 – 1 00	2 00 – 6 00
Appointments	8 30 – 11 00	3 00 – 5 30
Emergencies		4 00 – 6 00

### WILLINGHAM PHARMACY Tel: 01954 261787

#### NORMAL OPENING HOURS

Monday	8 30 – 1 00	2 30 – 6 30
Tuesday	8 30 – 1 00	2 00 – 6 00
Wednesday	8 30 – 1 00	2 00 – 7 00
Thursday	8 30 – 1 00	CLOSED
Friday	8 30 – 1 00	2 00 – 6 30

## Pets' Corner



*Kassia Bunnett's cat Colin*



ST MARY AND ALL SAINTS  
CHURCH STREET, WILLINGHAM  
[www.willinghamchurch.org](http://www.willinghamchurch.org)

### Services

- 7 May  
11 00 am Morning Worship
- 14 May  
11 00 am Communion Service
- 21 May  
11 00 am *Together at 11* – All Age Service
- 28 May  
11 00 am Communion Service

We have a variety of styles of worship and we hope you will find one that suits you. You will be warmly welcomed whenever you come.

**11 am Informal and Child-friendly** – Modern worship with Sunday Clubs for children and young people in the Octagon during term-time. Children are always very welcome.

**All-Age Service** – this is usually held on the third Sunday of the month, where children remain in the service. Fidget bags are available for use in the pews, if needed.

**Fifth Sundays** – we join with our sister churches in either Over, Longstanton, Swavesey or Lolworth and worship together.

If you know of anyone who is ill or who, for some other reason, would like a visit, please let one of the Vicars know. Furthermore, if you'd like to discuss getting married, or having your child christened, we'd love to talk to you!

Clergy contact details:

Reverend Julie Anderson, The Vicarage, Over. 01954 231496.  
Reverend Lynda Davies, The New Rectory, Longstanton. 01954 202912.

### St Mary and All Saints Events

**First Steps** – a fun session for pre-school children and their parents or carers. Arrive at 10 am for tea/juice and toast. Free play and chat, followed by story from the Bible, singing and craft activity. Takes place at the Octagon on Fridays during school term time from 10 – 11 15 am.

**Messy Church** – *Church ... but not as you know it!* An action packed, informal and fun session for the whole family, with crafts to enjoy, stories to hear and songs to sing. Followed by food in the Octagon. Come with your children and enjoy! Next Messy Church is on **Saturday 13 May** at 3 30 pm. For more information, contact Heather at [mellowsfamily@googlemail.com](mailto:mellowsfamily@googlemail.com) or 270063, or Lynda at [revlyndadavies559@gmail.com](mailto:revlyndadavies559@gmail.com) or 202912.

**Cake Stall** – at 10 am on **Saturday 6 May**. Held in the church porch with proceeds going towards the work and upkeep of St Mary and All Saints. A Coffee Morning (run by Mothers' Union) will also take place in the Octagon at the same time. Come and enjoy!

**Christenings** – at St Mary's and All Saints, we love to welcome children into the church through baptism. Most Christenings take place within the all-age service on the third Sunday of the month but we can accommodate Christenings at other times too. Just give us a ring. Hanna and Tom's baby Lucy was Christened in January. Hanna says, 'We had planned to wait until Lucy was a little older but she had a major operation shortly afterwards and it meant a lot to us that she was baptised and we felt she had God watching over her. Lynda arranged this for us at incredibly short notice and nothing was too much trouble. The service was made so special for us and really relevant to all the children attending. Lynda had her suitcase of props to illustrate the journey Lucy was embarking on and a jam jar to collect people's prayers and wishes for Lucy. We all had a giggle when we tried to sing *All Things Bright and Beautiful* and realised there were in fact two very different tunes that accompanied our favourite hymn. This was such an incredibly special day for us and, as well as the religious element, allowed the rare opportunity for all those close family members and Godparents who hold Lucy close to their hearts to come together at what was also a very stressful time.'



WILLINGHAM SALVATION ARMY  
Silver Street, Willingham CB24 5LF  
01954 261108

### Services

Sunday meetings will now be at the old time of **5 pm**. Come and enjoy Jesus. Refreshments served after the service.

### Weekday Events

#### Mondays

- 10 30 am: Breakfast Club  
2 pm: Nimble Fingers Craft Club  
5 pm: Slimming World  
7 30 pm: Slimmer World

#### Tuesdays

- 11 am: Mature Movers

#### Wednesdays

10 – 11 30 am: Tiggers Toddlers: For 0 – 4 year olds with Mums or carers. An hour of free play, including use of the outside area (weather permitting) and a weekly craft table. There is a baby corner for pre-crawlers. At 11 am we provide a snack for the children and tea, coffee and cake for carers. At the end of the session we enjoy song-time. We ask for a contribution of £1 per family every week but the first week is free. Please contact Lisa Smith on 01954 210282 for further information.

#### Thursdays

12 30 pm: Luncheon Club every Thursday. £4 per person. Book with Daphne on 01954 260568

#### Alternate Thursdays

CAMEO Friendship Club: Alternate Thursdays **4 and 11 May** 1 45 – 3 pm  
Table Top Games Club: Alternate Thursdays **11 and 25 May** 1 45 pm

---

### CHURCH OF THE SACRED HEART

19 Needingworth Road, St Ives  
[www.sacredheart-stives.org](http://www.sacredheart-stives.org) Tel. 01480 462192

### Weekend Mass times:

St Ives, Sacred Heart  
Saturday evening: 5 pm  
Sunday: 8 and 11 am  
Bar Hill Church Centre: Saturdays at 6 pm.



Willingham  
BAPTIST CHURCH

George Street, Willingham, Cambridge CB24 5LJ  
info@willinghambaptist.org www.willinghambaptist.org

## Services

(\* = + activities for children)

### 7 May

10 30 am Enjoying all people – *Contemporary Worship*

6 00 pm We're a household – *Evening Worship*

### 14 May

10 30 am Numbers are continually growing – *Family Worship\*\**

6 00 pm WBC is a body – *Evening Worship*

### 21 May

10 30 am Christian aid breakfast service and activities

– *Altogether worship*

10 30 am WBC is a vine – *Evening Worship*

### 28 May

10 30 am Communion together – *Family Worship\*\**

6 00 pm WBC is a new humanity – *Evening worship*

## Events

**TOPS: Toddler group:** Tuesdays at 9 45 am for 18 months plus in the church. Great place to meet other families whilst the children enjoy the activities and playing. Currently there is a waiting list. Please contact Hilary Wyllie for further information – 01954 260051.

**Little Notes:** Thursdays 10 – 11 15 am. Half an hour of singing with instruments and actions followed by free play, refreshments and a chance to meet other parents or carers. For all pre-school children aged 1 – 4, with a quieter space set aside for babies under the age of 1. Please contact Sharon Sennitt on 01954 782345 for further information.

**Open Door Coffee Morning:** Every Wednesday 10 – 11 30 am. This is a chance to chat with old and new friends over tea and coffee. All welcome. Please contact Cynthia Nolan for further information – 01954 202240.

**Kids' Friday Club:** Fridays at 6 30 – 7 30 pm in the church for children of primary school age year 1 upwards. Action packed hour with craft, games, songs, drama all based around a bible story. Please contact Lorraine Bald for further information – 01954 261189.

**WBC Youth Club:** Fridays 8 – 9 pm in the church for Years 7, 8 and 9. Time to meet friends with music, X Box, table football, pool, joint games, tuck shop and stage time. WBC aims to help children, young people and adults consider their own response to the Christian message. More information from Paul Joel, 07955 071160.

**Men's Breakfast: 20 May** – 7 45 am in the Baptist Church for a hearty cooked breakfast followed by a short topical talk. Please contact Pete Sacre for more information – 01954 261655, sacrepete@yahoo.co.uk.

**Life Matters for Men** – Curry and talk at the Royal Bengal 17 May All men welcome – details will be posted on the church website [willinghambaptist.org](http://willinghambaptist.org), or email us at [lifemattersformen@gmail.com](mailto:lifemattersformen@gmail.com)

**Life Matters & It's a Girl Thing Village Litter Pick** – 15 July – more details to follow

## PASTORAL LETTER

Easter is past for another year and the supermarkets have removed all signs of chocolate eggs from the shelves. Is that how we treat Jesus? He died on the cross for each one of us. Do we put Him away for another year only to be resurrected next Easter?

When Jesus rose from the tomb on the third day after his crucifixion he was alive and that same Jesus is alive today. I realise some are going through all kinds of turmoil and the light at the end of the tunnel is flickering if not extinguished but let me assure you God is there for you. Read this meditation and if it is relevant to you, come and have a chat to someone in any of the great churches in Willingham that we have been blessed with, including the Salvation Army.

### On Darkness and Light

In our own moments of deep darkness,  
when despair takes its grip on our souls  
when we feel abandoned and alone  
when the presence of God is at best a dim memory  
and we echo deep within us Jesus' cry of desolation  
'My God, my God, why have you forsaken me?'  
then, at the bottom of the pit, when we can sink no more,  
May our grip tighten around the knowledge  
that Psalm 22 does not end at verse one  
that Jesus was not alone and the women had never left  
that light was flickering and hope was stirring  
that the world was about to change forever.

In our own moments of deep darkness  
when despair takes its grip on our souls,  
May we have the strength to hold on to the assurance  
beyond despair there is hope  
beyond dying there is living  
beyond forsakenness there is, always, the love of God.

In our own moments of deep darkness  
may this hope carry us through  
the days, months, and sometimes years  
until the new dawn's first rays of light  
touch our souls with warmth of an Easter morning.

Amen to that reflection.

Every Blessing

*TE Don Hall  
Salvation Army*

We are praying every week for healing, blessing and other needs. Please send requests for prayer in confidence to:

[willinghamhouseofprayer@gmail.com](mailto:willinghamhouseofprayer@gmail.com)

Tel: 01954 270225



# CHIMNEY SWEEP Cambridgeshire Trading Standards Approved



- Fully Insured
- Enhanced CRB Check
- Certificates issued
- Bird Guards/caps fitted
- All types of chimney swept
- No Mess, No Fuss



## SWEEPOVER

Tel: 01954 230777

Mob: 07779711458

[www.sweepover.co.uk](http://www.sweepover.co.uk)

19 New Road, Over, CB24 5PJ



## MOBILITY EQUIPMENT

STAIRLIFTS, SCOOTERS, WHEELCHAIRS,  
RISING CHAIRS, BEDS, WALKERS, TOILET &  
BATHING AIDS, KITCHEN & HOUSEHOLD  
AIDS, CONTINENCE CARE, CUSHIONS

HOME VISITS AVAILABLE

5 ROOKERY PLACE,  
FENSTANTON, PE28 9LZ

Tel: 01480 465533

[www.orchard-mobility.co.uk](http://www.orchard-mobility.co.uk)

Monday to Friday 9.30-4.00  
Saturday 9.30 - 12.30



Orchard  
mobility centre



## Andy Tibbett & Sons Painting & Decorating



- \* All internal & external work carried out to a high standard
- \* Trade references can be supplied
- \* Very competitive pricing
- \* A prompt & polite service from a name you can trust

Telephone: 01954 230810

Mobile: 07717 493723

Email: [andrewtibbett@hotmail.co.uk](mailto:andrewtibbett@hotmail.co.uk)



## A.R.Aspinal & Sons Ltd

Tel: 01954 234966 Fax: 01954 234967  
Unit 11 Norman Way Ind Est, Over, Cambs, CB24 5QE.  
[www.araspinal.co.uk](http://www.araspinal.co.uk)

WE STOCK A FANTASTIC RANGE OF NATURAL PAVING  
PRODUCTS COME AND VISIT OUR NEW DISPLAY AREA.

Bricks Concrete Blocks Lintels Cement Sand  
Gravel Hardcore Timber Fixings Footwear  
Decorating Supplies Industrial clothing Paving Slabs

Opening times: Mon to Fri 7.30am – 5pm



WE OFFER A FREE LOCAL DELIVERY SERVICE!

Little Oak Wood Turning  
01954 261773

Studio offering unusual gift ideas

OPEN Every Mon - Wed - Fri 1 - 6pm

[www.littleoak.org.uk](http://www.littleoak.org.uk)

66 Station Road Willingham CB24 5HG



## David Wake Carpentry and Joinery

- Fitted Kitchens • Specialised Joinery
- Doors and windows • Property repairs

Office: 01954 260678 Mobile: 07836 290112

GirtonPhysio  
CLINIC

WITH YOU EVERY STEP OF THE WAY



A physiotherapy clinic  
specialising in all **sporting  
injuries, workplace strains,  
postural problems, arthritis,  
aches and pains.**

100A High St  
Girton

01223 279168  
[girtonphysio.co.uk](http://girtonphysio.co.uk)

The clinic is recognised by



## Reader's Letter

Dear Editorial Team

I would like to pass on my sincere thanks to a Willingham resident for a recent act of genuine kindness.

My mother lives in Willingham and had a fairly nasty fall close to her front gate. By chance a lady was walking her dog and, as you might hope/expect, stopped to help. Her thoughtfulness didn't end there though and that's why I'd like to pass on our thanks. Having established that my mother could walk (albeit slowly), she helped her back into her house and ensured she was comfortable, made her a cup of tea, contacted me (her son) and telephoned the local GP. She waited for me to arrive before leaving (which took nearly an hour). My mother was pretty shaken and to have someone take time out of their busy day to make sure she felt comforted meant the world. Later on that day some flowers arrived on my mother's doorstep with a get well note. In the panic I didn't get an opportunity to say a proper thank-you and don't have any contact details (but think her name is Katie). I then spotted your newsletter and thought that might be a way to pass on our heartfelt gratitude.

*Robert Barton*

---

## What's on at Willingham Social Club?

**Five Ska, Friday, 26 May.** Doors open at 8 pm.

Tickets £9 from the club or

[www.wegotickets.com/event/389726](http://www.wegotickets.com/event/389726)

*Five Ska* is a highly enthusiastic live band and was formed in 2010 by five local musicians. Every weekend they travel around the country playing the music of *The Specials*, *Madness*, *Bad Manners*, *The Beat* and many more. Find them at [www.fiveska.com](http://www.fiveska.com) or on Facebook. We expect this to be a very popular night.

**Custard Comedy, Friday, 2 June.** Doors open at 7.45 pm.

Tickets £10 in advance, from the club or

[www.wegotickets.com/event/389998](http://www.wegotickets.com/event/389998).

Headliner *Wes Zaburak* is the master of mayhem and props. Support act *Mark Palmer* has a loud and often opinionated brand of comedy. *Glenn Moore* will entertain us, having been a finalist in 'So You Think You're Funny?' All linked together by resident MC *Laura Lexx*. It is recommended to book early as this event is always a sell-out. See our website and facebook page for more details on these acts.

**Beer Festival, Thursday, 29 June – Saturday, 1 July**

[www.willinghambeer](http://www.willinghambeer)

**Around Midnite:** Live covers band. **Saturday, 19 August**

[www.aroundmidnite.co.uk](http://www.aroundmidnite.co.uk)

**Let There B/DC:** Live tribute band **Saturday, 30 September**

[www.letthereb/dc.com](http://www.letthereb/dc.com)

**The Jam Project:** Live tribute band **Friday, 24 November**

[www.thejamproject.uk](http://www.thejamproject.uk)

## BOBTAIL

Paul and I encountered this stray cat last November. He was scrawny and his tail was devoid of fur but had an enormous lump and hung limply, weighed down by the growth. As the days grew colder, we kept a look out for him and left water for him, occasionally milk, and often dried cat food. He visited each day, whatever the weather, between 4 and 9 pm.

We didn't see him for a couple of weeks, but then, there he was at his usual time, but minus his tail. It was at this point that Paul named him BOBTAIL which stuck. We looked forward to his visits, and even when Paul visited his parents about 60 miles away, he would ring and ask, 'Has Bobtail been? How did he look today?'

Bobtail wouldn't let us near him. At the first hint of an approach, he was off. However, towards the beginning of March he began to creep up to the window, and look in – when the little bowls we put out for him were empty. Paul would take out a box of cat food; Bobtail would vanish into the darkness. Though, once Paul had refilled the bowls and retreated indoors with the door firmly shut, Bobtail would appear and tuck in. But by now he was looking scrawny again and losing his fur. So we decided to take some action and rang the RSPCA.

An officer came with a large cat cage. It was baited with a bowl of Bobtail's favourite food; the trap was set. That evening, there was an almighty CLANG and Bobtail was safely ensconced but he was most certainly not a happy kitty. The RSPCA was shut for the night. Our neighbour gave me the phone number of the Emergency Vet in Milton. I rang them and they asked me to bring him in.

But how? Paul was visiting his parents and I don't drive. So I rang Alpha Cars and explained the dilemma. Bless Daniel! He didn't flinch and promised to help – which he did. The driver took one look at the furious cat and, without hesitation, picked up the animal cage and, in the car covered it with an old blanket. Amazingly, Bobtail settled down but he stank!

At the surgery, the hope was to sedate Bobtail so he could be checked over; the RSPCA would collect and take him to an animal shelter and hopefully he would move on to a loving home. I said goodbye to him. The lovely taxi driver drove me home and refused to charge for waiting time. I rang Paul with the latest situation.

The next morning I rang the vet to enquire after Bobtail but was given the sad news that he had died during the night. He had cancer, diabetes, a mass in his tummy and worms. The vet explained if he hadn't been taken to the practice, he would have died in agony in the next few days. RIP Little Bobtail.

If you have any concerns about a stray cat, or indeed any animal or bird, please call the RSPCA on 0300 123 0346.

*Kathryn Critchley-Fowler*

Kate has a copy of *BBC Songs of Praise Music Edition* that she would like to give away. First come, first served.

## Willingham Library

[www.cambridgeshire.gov.uk/library](http://www.cambridgeshire.gov.uk/library)

0345 0455225

### Opening Hours

Monday	Closed	
Tuesday	10 am – 1 pm	2 – 5 pm
Wednesday	Closed	
Thursday		4 – 7 pm
Friday	10 am – 1 pm	
Saturday	10 am – 1 pm	

### Library News

#### Engage in the Afternoon

Special sessions for adults on the first Wednesday of each month from 2 to 3 30 pm. There are speakers, tea/coffee/biscuits and a chance to change books.

In April, we had a really enjoyable talk about the **Babraham Institute** and their work in the field of bioscience. Dr Tacita Nye gave us a general idea of the work and aims of the Institute and then Chiara Pantarelli, a PhD student from Orvieto in Italy, told us about the project she is working on. This was followed by an interesting discussion from a lively audience ranging from the science itself, to funding, to collaborative working with Sanger, to women in science. A good time was had by all.

#### Next Session:

**Wednesday 3 May – *Dad's Army – Behind the Scenes of the BBC Series*** with Elizabeth Brown.

Why not join us? You will be very welcome in our friendly group. It's fun and free! Donations are welcomed towards refreshments.

#### Friends of Willingham Library – AGM 22 May, 7 30 pm

The Friends of Willingham Library AGM will be held on **Monday 22 May** at 7 30 pm in the Library. All are welcome, both members and non-members. The library is a valuable resource and it is important that it is well used. Do you have any ideas on how it could be improved?

As well as books (including 'quick picks' of recently published work) there are magazines, talking books and children's DVDs for loan. It also provides access to the huge stock held in the county; items can be requested from other libraries for £1 for adults but this is free for children. Library members may have up to 2 hours' free Internet access a day on the library computers and are also able to access the library system on-line from home to search the catalogue, make requests and renew books as well as being able to use reference websites such as *Encyclopedia Britannica* – the junior version of this is excellent for helping with homework. The library service has subscriptions to some websites, such as [Ancestry.com](http://Ancestry.com) and *Which?* that can only be accessed through a computer in the library.

And the building itself is an asset. Outside opening hours

it is currently used for a local history group, a reading group, the Engage sessions (see above), as well as occasional events organized by the Friends such as Poetry and Prose evenings and various exhibitions and talks. Sadly, attempts to provide regular events for children, such as Storytime sessions, have not been sufficiently well supported.

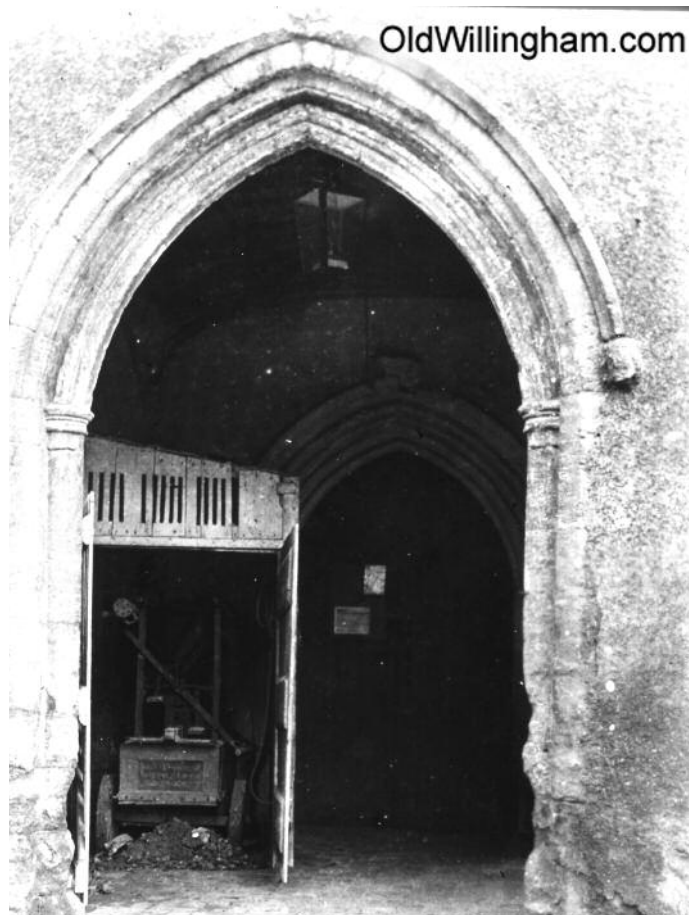
We are always on the lookout for new ideas for groups or events in the library, so if you have one, either come along to the AGM or drop a note into the plastic folder on the Friends noticeboard facing the door. Alternatively email [king.linda.j@gmail.com](mailto:king.linda.j@gmail.com) or phone 260780.

## Old Willingham

This strange contraption is a fire pump which was operated by two people to pump water in the event that a fire broke out. Fire was a constant threat owing to the number of thatched roofs and open fires. We believe this photo is from around 1890. The pump was stored in a small shed inside the church porch! The bad state of the porch shows that it was before the major restoration carried out by Rev Watkins in the 1890s. The church was seriously neglected in the latter part of the 1800s because most of the village was non-conformist, Baptist or Methodist and the Rector typically lived elsewhere, collecting the tithe money from afar. Watkins was the first Rector for a long time to take a serious interest in the village and the church.

See more photos at [www.oldwillingham.com](http://www.oldwillingham.com)

If you have stories or memories about this picture, please contact Jon Edney, 31 High Street or [oldwill@oldwillingham.com](mailto:oldwill@oldwillingham.com).





## NATURE NOTES

Spring is here! Did you notice the signs of its appearance; perhaps a warm day, more daylight time, one or two birds singing and flowers appearing? Maybe you don't have the time to notice these things. Too occupied with the daily routine, children to sort out, work to go to? How often do we ask ourselves – where does the time go? Perhaps nature can answer some of these questions!

If we give some thought to nature, we can perhaps bring calm and satisfaction into our lives – better health and less stress? We believe our understanding of nature is an important aspect of what is now termed 'mindfulness'. In this article, we hope to inspire you, whether wandering around the village or further afield, particularly in the countryside, to take note and pleasure from the natural things around us and to reduce stress and tribulation of the daily routine. Spring is here; enjoy renewal of life!

There is never a clear defining line between winter and spring but after damp, dreary days, we yearn for warmth and brightness. The first hint of spring is the appearance of white clusters of snowdrops and yellow winter aconites. A warm day might remind us there are fewer cold, damp, dreary days ahead. Soon, we get another lift to our spirits with daffodils. Lesser celandine, dandelion and daisies put in an early appearance as do the tiny blue flowers of speedwell. Primroses are in abundance by March and by April cowslips dangle their yellow flowers. Many other wild flowers will have appeared by now. Observe their beauty and enjoy!

Then there is bird song. Do you notice birds singing? It's surprising how many of us hear nothing! Take time to listen whether alone or with friends. Our dear, cheerful robin is the only bird to sing throughout the year; even the female sings; one of very few female birds to do so. The winter song is different to that in spring. Spring is heralded when the male changes its tune to attract a mate and warn off rival males. Mistle thrushes are singing their melancholy tune from the tops of tall trees before January is out and song thrushes, with their repeated phrases, are not far behind. Did you notice, particularly if you feed the birds in your garden, that there were many blackbirds over winter but now there are fewer? That is because many of the blackbirds are just visitors (migrants) from northern Europe and they have now returned to their breeding grounds. This also applies to robins. Other resident birds are now becoming more active, including dunnoek, house sparrow, great and blue tits and several other species, depending on the habitat your garden reflects.

Other winter migrant birds such as redwing and fieldfare feed on our local fields, far from the harsh winters of Scandinavia and northern Europe. Another bird which visits our country in the winter is the exotic waxwing. The numbers vary each year, depending on availability of food in their homeland. There were reasonable numbers this winter and birders and non-birders enjoyed their presence in various parts of Cambridge. These winter migrants return to their homelands and will be replaced by summer migrants, mostly from southern Europe and Africa. Many of

you will think of the swallow but this is by no means the first migrant bird to return here. The first arrivals are now with us. These include the unmistakable call of the chiffchaff – it is onomatopoeic – that is, its name reflects its song – chiff, chaff, chiff, chaff – and it does go on and on! Other early arrivals are blackcap, sand martins and wheatear. The latter bird is a rare breeding bird in this part of the country and only stops over a day or two before moving to its breeding grounds in the west and north.

Another noticeable aspect of nature which heralds the early days of spring is Lepidoptera – butterflies. You may have noted a few small Tortoiseshell. On a warm day these will have awakened from hibernation, possibly from your garden shed or other outbuilding. Other butterflies to appear include Peacock, Red Admiral, Comma, Brimstone, Orange Tip, Green-Veined White and Small White. If you've been lucky, you might have seen a few of these recently.

We hope this article will spur you on to taking notice when you're out and about and to enjoy the bounty of what nature has to offer.

*Melvyn and Brenda Smith*

## WILLINGHAM WINDMILL

### OPEN DAYS

If you are interested in supporting the restoration of Cattell's Mill (one of the largest smock mills in East Anglia) visitors are welcome from 1 pm to 5 pm for this year's National Mills Weekend on **Saturday 13 and Sunday 14 May**.

Cream teas, cakes and refreshments will be served in the café and postcards will be on sale to raise funds. A 'mill to mill' radio link will be run once again courtesy of Cambridge Amateur Radio Society.

All proceeds go to the Cattell's Mill Restoration and Preservation Trust who are extremely grateful to all our supporters and volunteers

### Crossword Answers

**Across:** 7 Parrot, 8 Entire, 9 Tawny Owl, 10 Rook, 11 Symbol, 13 Nailed, 14 Thrush, 17 Pigeon, 19 Bird, 20 Off and on, 22 Velcro, 23 Ignore.

**Down:** 1 Canary, 2 Wren, 3 Stroll, 4 Merlin, 5 Starling, 6 Oriole, 12 Blue Duck, 15 Heifer, 16 Hoopoe, 17 Puffin, 18 Odours, 21 Nene.

**Answers to FOWL quiz:** 1. Margery Allingham  
2. H E Bates 3. Henry James 4. Catherine Cookson  
5. John Mortimer 6. James Pattison 7. M C Beaton  
8. Daniel Keyes 9. Edgar Wallace 10. Umberto Eco

### Answers to Children's Quiz

1. German measles 2. BBC Children in Need 3. Siesta  
4. 50 5. 007 6. 3 7. Nine 8. Liquorice Allsorts 9. 12  
10. Geology



**Witchford Lighting Centre Ltd**  
Unit 2 Sedgeway Business Park, Willingham, Ely CB8 2HY  
**01353 664108**  
Emergency call out: 07776 254853

**We offer:**

- ✓ A bespoke design consultation with our fully qualified lighting designer and electrician
- ✓ All electrical testing, installations and call outs
- ✓ Alarm systems
- ✓ Electric gate systems
- ✓ Sound professional advice

**Come and visit our newly extended and refurbished showroom for all your lighting needs.**

Showcasing the latest in LED technology combined with beautiful new designs for your home.

*Come and be inspired!*

www.witchfordlighting.co.uk

dar, Filstead, Pan Asia, FRANKITE

**EDGAR FARRELL**  
CONSTRUCTION  
Building Excellence and Affordability

New builds & Renovations  
Kitchens & Bathrooms  
Loft conversions & Roofing  
Extensions & conservatories

WWW.EDGARFARRELL.CO.UK

**POST OFFICE**  
**Willingham Post Office**  
15 High Street, Willingham CB24 5ES  
01954 260331

**Mon - Fri 08:30 - 18:00 Sat 08:30 - 15:30**

- All mail services, including special delivery
- Travel Currency, Travel Money Cards, Travel Insurance and MoneyGram
- Passport Photographs, Passport Check and Send Service
- Vehicle Tax and Bill payments
- Financial Products – Insurance, ISA, Growth Bonds, Credit Cards and much more
- Broad Band and Phone Packages, Phone Top-Ups
- Free Cash withdrawals for most major Banks as well as Cash & Cheque Deposits
- Photocopying and Laminating Service
- Great range of Greeting Cards, Stationery and Pack & Post Items
- Document Certification Service

**Cambs Oven Cleaning**

**Revive Your Oven,**  
**Contact Ian Morley on 07584 684853**

**Cambridge Executive Cars**  
Est. 2005

Delivering you and quality, door to door



Based in Willingham, we are your mid to long distance Executive travel service specialists.

We service all airports, seaports, corporate events, London and much more for no extra cost than a standard taxi. So why not travel in style with us, your local company?!

Call or email for a quote today...  
Bookings@cambridge-executive-cars.co.uk  
Richard on 07782 130 380.



www.cambridge-executive-cars.co.uk

**Bespoke CATERING FOR CORPORATE EVENTS PRIVATE PARTIES & INTIMATE GATHERINGS**

FOR MORE INFO CALL US ON 01954 263028  
OR EMAIL INFO@PUDDINIATTHEDELI.CO.UK  
WWW.PUDDINIATTHEDELI.CO.UK

**ACA Heating & Plumbing**

46 Church St Willingham Cambridge CB24 5HT

Gas and oil boiler servicing, breakdowns  
Boiler upgrades and heating installations  
Bathroom and Wetroom installations  
Un-vented cylinder installations/servicing  
All types of plumbing and heating works undertaken  
Local friendly services with over 14 years experience

Andrew Leahy mobile: 07833 204499  
Email: andy@acaplumbing.co.uk  
www.acaplumbing.co.uk

## LOOKING BACK – 1947 FLOODS

In March's issue of the *Willingham News*, Graham Rose described his personal memories of the 1947 floods. *Looking Back*, these are some pieces from the *Cambridge News*.

### Friday 21 March

Floods in the Fenlands are the most wide-spread and disastrous in living memory. Over 100 square miles of Fenland are flooded.

### Wednesday 26 March

Neptune tanks were used to seal the breach at Over – see picture.



### Tuesday 8 April

60 mph gales were recorded in Britain, and this high wind exacerbated the flooding.

### Thursday 10 April

25,000 Acres of Fenland were flooded and it was decided to try and clear this land to enable a crop to be grown that year. Sugar beet and potatoes were to be grown. Operation Fenlands was initiated and large pumps were installed near Aldreth, Earith, and Haddenham Fen. Fifteen 24-inch pumps, capable of delivering 50 tons of water a minute, were obtained from Holland and by 10 May, the water level had dropped 2.5 feet from the maximum level.

A fund had been set up to assist the community and by Friday 2 May; over £12,000 pounds had been raised. Donations had been received from countries round the world including Canada and the USA. The *Cambridge News* quoted individual donations from a golf club in Nyasaland and a radar station in Palestine.

*David Stevenson*

### Honeypot Pre-School

**At the Primary School in Thodays Close**

**OPEN DAY**

**Saturday 6 May 10 am – 12 pm**

**For more information**

**phone 01954 201567**

## It's a Fen Edge Festival Year 23 – 25 June!

Already booked are the acts that will bring us three evenings of music and dancing. *Big10* and the *Keith Pearson Trio* will provide the free entertainment on Saturday and Sunday. The Festival's musical entertainment will get off to a great start on Friday when Cottenham Primary School's Summer Dance will feature popular band, *Swagger*. Each band promises a great way to enjoy those long and warm summer evenings!

There's more musical entertainment on offer at The Venue, our setting for live music and performances throughout the weekend – all at no charge. With its eclectic mix of music and entertainment, The Venue allows local musicians and performers, of all genres and ages from the Fen Edge villages to showcase their talent. This year The Venue is sponsored by the Aviva Community Fund and our thanks to everyone who voted for the Fen Edge Festival at the end of last year so that we could receive this valuable funding. If you or your group would like to perform at this year's Festival, please email: [info@fenedgefestival.co.uk](mailto:info@fenedgefestival.co.uk).

The Festival will be centred around Cottenham Village Green which will be the setting for many of the activities, attractions and events we have planned. The Green will also be the venue for the ever popular Festival market with stalls selling everything from food and drink to gifts and craft goods and much more. If you are interested in having a stall, there may still be space available. It's a fantastic opportunity to reach thousands of people, so please get in touch by email: [stalls@fenedgefestival.co.uk](mailto:stalls@fenedgefestival.co.uk).

There are also events planned at Cottenham Community Centre and Cottenham Village College. New activities and events are being added to the programme all the time so if you run a group or organisation and would like to be part of the Festival please email: [activities@fenedgefestival.co.uk](mailto:activities@fenedgefestival.co.uk)

The Festival is organised by a sub-committee of the Fen Edge Community Association (FECA). FECA underwrites the cost of putting on the event, which in 2015 totalled thousands of pounds to pay for the entertainment and attractions plus the cost of marquee hire, first aid, security, toilets, insurance and more. This year we have already received generous sponsorship from Cottenham Parish Council, Malary, Voland Roofing, Cambridge Glass and BV Financial Services and we hope that many more local businesses will help us to put on this great community event. Amey Cespa has also committed to providing us with significant facilities for the event.

Any profits made by the Festival are available to fund grants to organisations that are members of FECA and to stage future social or recreational events. If you'd like to know more about FECA and the work it does within the community, please visit: [www.fenedge.co.uk](http://www.fenedge.co.uk).

It's going to be a packed weekend; make sure you have the dates in your diary so you can be part of it. **The Fen Edge Festival: 23 – 25 June.**

The best way to keep up to date with what's happening is to check the festival website: [www.fenedgefestival.co.uk](http://www.fenedgefestival.co.uk) and Facebook: [www.facebook.com/fenedgefestival](http://www.facebook.com/fenedgefestival)

# Highgate Country Stores Ltd



Over Road, Willingham, Cambridge  
CB24 5EU

- ❖ High Quality Pet Food and Accessories
- ❖ Poultry and Farm Animal Feed and Equipment
- ❖ Horse Feed, Equipment and Bedding
- ❖ Riding Accessories
- ❖ Fuel- Calor Gas, Logs, Kindling and Coal



Open 7 Days a week

Monday – Saturday 8.00-5.30pm, Sunday 9.00am -2pm

[www.highgatecountrystore.co.uk](http://www.highgatecountrystore.co.uk)  
Tel 01954 260798  
[info@highgatecountrystore.co.uk](mailto:info@highgatecountrystore.co.uk)



## BEAUTIFUL EYEWEAR AT DISCOUNT PRICES – SO WHAT'S THE CATCH?

No catch – we've been making great quality prescription glasses and sunglasses for over 30 years – and now you can buy your glasses directly from us.

Visit our factory shop – where you can choose from a wide range of contemporary frames with the help of our friendly and knowledgeable team.

We'd love to see you – please ring to book an appointment (we get quite busy!) and bring along your up-to-date prescription.

01954 231545  
[www.all-eyes.co.uk](http://www.all-eyes.co.uk)  
[sales@all-eyes.co.uk](mailto:sales@all-eyes.co.uk)

20 Norman Way Industrial Estate  
Over Cambridge  
CB24 5QE

We are open between 9am and 5pm Monday to Friday



**A**  
**NEW**  
**PAIR**  
**OF GLA**  
**SSES BY**  
**ALLEYES**

## Holistic Timeout



FHT  
Federation of Holistic Therapists



- Back, Neck & Shoulders >> **Chair Massage £15.00**
  - Thermal Auricular Therapy (Hopi Ear Candling)
  - Reflexology (Face or Feet)
  - Indian Head Massage
  - Hot Stone Massage
  - Swedish Massage
  - Aromatherapy
- Bookings & enquiries contact:  
Astrid-VTCT Level 3 Diploma  
**Phone 07546 094499**  
Based in Willingham

## CAMBRIDGESHIRE BATHROOMS

*Dream - DESIGN - ACHIEVE*

- Premium Brands
- 3D Bathroom Design Service
- 5000 sq ft Of Showroom
- Working Showroom Displays
- Technical Advice Throughout
- In House Delivery Team

Call Today On  
**01223 837 939**

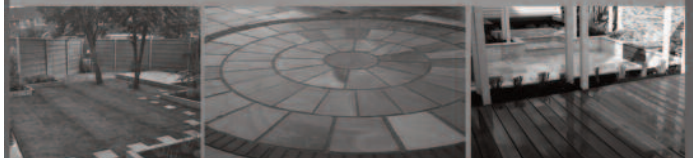
Unit 12b Sawston  
Park, London Road,  
Sawston Cambridge  
CB22 3EE

**Opening Times**  
Mon - Sat 9am to 5pm  
Sun 10am to 2pm



## Summit Landscapes

- PAVING
- DRIVEWAYS
- BRICKWORK
- CARPENTRY
- GROUNDWORK



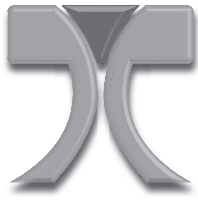
[www.landscapingpaving.co.uk](http://www.landscapingpaving.co.uk)

**0 1 2 2 3 - 9 2 9 3 9 4**

# WHAT'S ON

DATE	EVENT	ORGANISATION	VENUE	EXTRA INFO
Mon 1 May	<i>Spicesotieplants</i> with Suzsa Serer	Gardening Club	Social Club	7 30 pm, see p7
Wed 3 May	Carers' Support Meeting	Surgery	Surgery	2 – 4 pm, see p11
Wed 3 May	<i>Dad's Army – Behind the Scenes</i> With Elizabeth Brown	Engage in the Afternoon	Library	2 – 3 30 pm, see p16
Wed 3 May	Parish Council Meeting	Parish Council	Octagon	7 30 pm, see p10
Thu 4 May	CAMEO Friendship Club	Salvation Army	Salvation Army Hall	1 45 pm, see p12
Sat 6 May	Cake Stall	Parish Church	Parish Church Porch	10 am, see p12
Sat 6 May	Coffee Morning	Mothers' Union	Octagon	10 am, see p12
Sat 6 May	Open Day	Honeypot Pre-School	Primary School	10 am, see p19
Sat 6 May	Family Fun Day	Women's Voices	Bar Hill Village Hall	2 – 10 30 pm, Details in April's issue
Sun 7 May	Cambridge's <i>Wings for Life</i> Run	Wings for Life	Cambridge & the Fenlands	<a href="http://www.wingsforlifeworldrun.com/gb/en/cambridge">www.wingsforlifeworldrun.com/gb/en/cambridge</a>
Sun 7 May	Open Day	Bowls Club	Bowling Green	10 am – 1 30 pm, for info, email <a href="mailto:terry.buckley@talk21.com">terry.buckley@talk21.com</a>
Sun 7 May	Jazz Friends with Pete Lay	Jazz Club	Social Club	12 30 – 3 30 pm, see p8
Mon 8 May	<i>Willingham News</i> Deadline	<i>Willingham News</i>		See p3, articles to be sent to: <a href="mailto:willinghamnews@btinternet.com">willinghamnews@btinternet.com</a>
Mon 8 May	<i>Sign Language</i> with Elissa Tregear	Women's Institute	Social Club	7 30 pm, see p5
Thu 11 May	Table Top Games Club	Salvation Army	Salvation Army Hall	1 45 – 3 pm, see p12
Thu 11 May	Rehearsal	Over Community Singers & Drummers	Baptist Church	7 30 pm, see p7
Sat/Sun 13/14 May	Open Days	National Mills Weekend	Cattell's Mill	1 – 5 pm, see p17
Sat 13 May	Messy Church	Christians Together	Parish Church & Octagon	3 30 pm, see p12
Mon 15 May	Review of <i>Fashion Assignment Photos</i> . Introduction to <i>Contre Jour/Silhouette</i>	Photography Cub	Baptist Church	8 pm, see p7
Tue 16 May	Deadline for Consultation: Willingham's Boundary with Over	The Community Governance Review		<a href="http://bit.ly/2kFNx3w">bit.ly/2kFNx3w</a> See p10
Wed 17 May	Hearing Aid Clinic	Surgery	Surgery	2 – 4 pm, see p11
Wed 17 May	Annual Parish Meeting	Parish Council	Octagon	7 30 pm, see p10
Wed 17 May	Curry & Talk	Life Matters for Men	Royal Bengal	See p13
Thu 18 May	Golf Day	Black Bull Golf Society	Ramsey	Nigel Aspinall, 01954 200592 or <a href="mailto:nidgeandjenny@yahoo.co.uk">nidgeandjenny@yahoo.co.uk</a>
Thu 18 May	CAMEO Friendship Club	Salvation Army	Salvation Army Hall	1 45 pm, see p12
Sat 20 May	Breakfast & Topical Talk	Men's Breakfast	Baptist Church	7 45 am, see p13
Sat 20 May	Summer Fete	Primary School	Primary School	2 – 5 pm, see p7
Mon 22 May	AGM	Friends of Willingham Library	Library	7 30 pm, see p16
Thu 25 May	Table Top Games Club	Salvation Army	Salvation Army Hall	1 45 pm, see p12
Fri 26 May	Cake Break	For MS Society	Baptist Church	10 am – 12 pm & 6 30 – 8 pm. See p7
Fri 26 May	<i>Five Ska</i> – Live Band	Social Club	Social Club	8 pm, see p15
Thu 25 May	CAMEO Friendship Club	Salvation Army	Salvation Army Hall	1 45 – 3 pm, see p12
Sat 28 May	Open Day	Bowls Club	Bowling Green	10 30 am – 1 30 pm, for info, email <a href="mailto:terry.buckley@talk21.com">terry.buckley@talk21.com</a>
Sun 29 May	Impromptu Music with the Jam Club	Jam Club	Social Club	7 30 pm <a href="http://willinghamsocialclub.com">willinghamsocialclub.com</a>
Tue/Fri 31 May/3 June	<i>My Fair Lady</i>	Over Players	Over Community Centre	See p7

THIS MAGAZINE WAS PRINTED BY



## Target Print Ltd

Incorporating *QUAYSIDE PRESS*  
And **King Printers of Over**

Broad Lane, Cottenham, Cambridge CB24 8SW

Telephone: **01954 251189**

Email: [print@targetprint.org](mailto:print@targetprint.org)

Web: [www.targetprint.org](http://www.targetprint.org)

- Brochures
- Manuals
- Flyers
- Letterheads
- Compliment Slips
- Invoices
- Statements
- Purchase Orders
- Business Cards
- Folders
- Booklets
- Posters
- Postcards
- Envelopes
- Continuous Stationery
- Menus
- Invitations
- Labels
- Post-it® Notes
- and much more ...

SKIMMING - DRY LINING - SCREEDING - RENDERING  
CONTACT FOR A FREE CONSULTATION OR QUOTE



# SCULLY

Plastering

01954205239 - 07521130610  
[ALEX.SCULLY@BTINTERNET.COM](mailto:ALEX.SCULLY@BTINTERNET.COM)

## Ward Solutions Ltd

We specialise in the installation of flue lining systems, wood burner's and fireplaces, 15 years experience.

We can supply you with a stove or install one supplied by you.

Other services include- chimney re pointing, smoke tests, And fitting pots and cowl.

HETAS registered

Call or email for a free survey

0800 357 92 91  
01954 200 021

[info@wardsolutions.co.uk](mailto:info@wardsolutions.co.uk)



Unit 1 G Highgate Farm  
Over Road, Willingham  
01954260998

[willinghamcountrybutchers@gmail.com](mailto:willinghamcountrybutchers@gmail.com)

- Quality locally sourced meats
- Family meat packs
- Free local delivery
- Handmade sausages and burgers
- Deli and cheese counter
- Fresh fruit and veg
- Sausage making evenings and gift vouchers
- Open 7 days a week

**Buy Better Buy Local**

*MAE*  
**Hair Studio**  
Hairdressers

*Our salon offers all aspects of hairdressing including wedding hair with a personal touch. We can come to you on your special day.*

**Tel: 01954 260224**

## FM FAMILY LAW



**We understand family matters**

Our solicitors are specialists in family law with over 25 years' experience in supporting clients in divorce and relationship breakdown. Our services include:

- Divorce
- Emergency Application
- Separation
- Negotiations
- Arbitration
- Financial Settlement
- Mediation
- Collaborative Law
- Children
- Court Representation
- Injunctions
- Cohabitee Disputes

[www.fmfamilylaw.co.uk](http://www.fmfamilylaw.co.uk)

Special rates available to employees of Cambridgeshire Constabulary. Please contact Christina on 01223355333 or email [christina@fmfamilylaw.co.uk](mailto:christina@fmfamilylaw.co.uk)



Registered by the Solicitors Regulation Authority no 658225

# VILLAGE DIRECTORY

Please notify *Willingham News* of any changes

<b>Council</b>	Parish Council ( <i>See full details on page 9</i> )		01954 261027	
	County Councillor	Peter Hudson	peter.hudson@cambridgeshire.gov.uk	
	District Councillor	Mr R Manning	01954 261235	
	District Councillor	Mr B R Burling	01954 230168	
	District Councillor	Mrs P S Corney	01954 213221	
<b>Services</b>	Police		101	
	Surgery		01954 260230	
	Dispensary for repeat prescription requests		01954 260073	
	Pharmacy		01954 261787	
	Over Surgery		01954 231550	
	Urgent Care Cambridgeshire		111	
<b>Schools</b>	Primary School	Mrs V Francis	01954 283030	
	Willingham Out Of School Club (3–6 pm only)	Mr D Carminati	01954 283033	
	School Governors Chairman	Caroline Hyde	Chair@Willingham.cambs.sch.uk	
	School Association	c/o school	01954 283030	
	British School Trust	Ray Croucher	01954 261113	
<b>Children</b>	Beavers, Cubs and Scouts	Mrs M Dellar	01954 260045	
	Honeypot Pre-School (term-time only)	Mrs Kate Van Dort	01954 201567	
	Tigger Toddlers	Lisa Smith	01954 201282	
	Koala Kids		01954 260046	
	Guides and Rangers	Lynn McGoff	01954 261296	
	Ladybird Borland's School Of Dance	Mrs L Borland	01954 203347	
	Bubbles/Messy Church	Heather Mellows	01954 270063	
	TOPS (Baptist Church Toddlers Group)	Hilary Wyllie	01954 260051	
	Little Notes Music Group (0-4 years)	Sharon Sennitt	01954 583195	
	Kids' Friday Club (Baptist Church)	Loriane Bald	01954 261189	
	<b>Halls</b>	Ploughman Hall Bookings	through Parish Council	01954 261027
Wilford Furlong Centre			01954 261445	
The Octagon		Rosemary Mumford	01954 260934	
Baptist Bookings and Rentals		Emma Launchbury	01954 263108	
Salvation Army Hall Bookings			01954 260568/01223 233492	
Willingham Social Club Bookings		Alex Rutherford	01954 260557/07415 050279	
			willinghamsocialclub@btconnect.com	
Willingham Youth Centre bookings			email: enquiries@willinghamyouthtrust.org	
<b>Local Representatives</b>		Allotments	Sue Ayling	01954 260718
		Billavincea Lodge 8719	Mr M Scrivener	01480 413533
	Fen Edge Community Association	Eileen Wilson	chair@fenedge.co.uk	
	Over & District Royal British Legion	Andrea Rusted	01223 562844	
	Willingham Action Group (WAG)	Mike Tidball	01954 260647	
	Willingham Combined Charities	Mrs Gail Cook	01954 231272	
	Workers' Educational Association	Rosemary Mumford	01954 260934	
	<b>Clubs</b>	Gardening Club	Mrs C Bailey	01954 260794
Willingham Social Club		Alex Rutherford	01954 260557/07415 050279	
			willinghamsocialclub@btconnect.com	
Willingham Jam Club		Julian Eales	01954 201818	
Willingham Photography Club		Christopher Cross	01954 260790	
Willingham Walkers		Mike Tidball	01954 260647	
Willingham Youth Club		Pete Lawrence	enquiries@willinghamyouthtrust.org	
Women's Institute		Jacky Sparks	01954 261831	
Women's Royal British Legion		Mrs M Few	01954 260124	
<b>Sport</b>		Angling		www.histonangling.org.uk
		Badminton	Sarah Custance	01954 202005
	Bowls Club	Terry Buckley	terry.buckley@virginmedia.com	
	Cricket Club	Mr R Ambrose	01954 260446	
	Cycling Club – www.willinghamwheels.com	Paul Knighton	07787 530394	
	Ladies' Hockey	Teresa Hutchcraft	01954 260177	
	Tennis Club	John Graham	01954 231968	
	Willingham Diamonds Netball Club	Emma Byrom	01954 202481	
	Willingham Running Club	Gerry Mears	07511 131645	
	Willingham Sports Pavilion	through Parish Council	01954 261027	
	Willingham Wolves (Boys & Girls Football)	Jamie Smith (Sec)	01954 261141	
	<b>Churches</b>	Mothers' Union (Branch Leader)	Mrs S Hayden	01954 260363
		Baptist Church	Rev Paul Joel	01954 260538
		Methodists (Ministerial Contact)	Rev Hilary Cheng	01223 700778
		Roman Catholic Priest	Fr Karol Porczak	01480 462192
Salvation Army		Don & Trish Hall	01223 233492	
Parish Church		Rev Julie Anderson	01954 231496	
		Rev Lynda Davies	01954 202912	



SPECIALISING IN THE  
SALE OF HOMES IN  
WILLINGHAM AND THE  
SURROUNDING VILLAGES

**HOCKEYS**  
ESTABLISHED 1885



Paying too much tax?  
Paperwork a burden?  
Accounts fee expensive?  
Like a business review?

At **Uttridge Accounting** we understand your business and tax needs and provide a range of services to meet your requirements, including:

- Accounts Preparation
- Self Assessment
- Taxation Advice
- Business Start-ups
- Business Planning
- Payroll Services
- Online Accounting

For professional accounting expertise, attentive personal service and great value for money, contact us today.

**UA Uttridge**  
ACCOUNTING  
Chartered Certified Accountants

**ACCA**

01954 263000

info@uttridge-accounting.co.uk  
www.uttridge-accounting.co.uk

**Vintage**  
travel

ESTABLISHED  
1990

Your Local  
Travel  
Company

**HANDPICKED  
ESCAPES**

A selection of beautiful individual villas  
& houses with pools in tranquil settings  
& areas of traditional local culture.



Call for a brochure or to speak to one  
of our specialists **01954 261431**

or visit our website  
**www.vintagetravel.co.uk**

GREECE • SPAIN • LANZAROTE •  
BALEARICS • PORTUGAL • TURKEY •  
FRANCE • ITALY • CROATIA



**ABTA**  
ABTA No V5643

Three local offices and a team of  
qualified property professionals.

Doesn't your Willingham home  
deserve Tylers?

Call us for a free valuation.



01223 214400

tylers.net