

# WILLINGHAM NEWS



[willinghamnews@btinternet.com](mailto:willinghamnews@btinternet.com)  
FREE TO EVERY HOME

village website: [www.willinghamlife.org](http://www.willinghamlife.org)  
February 2015

## It was a BIG adventure!

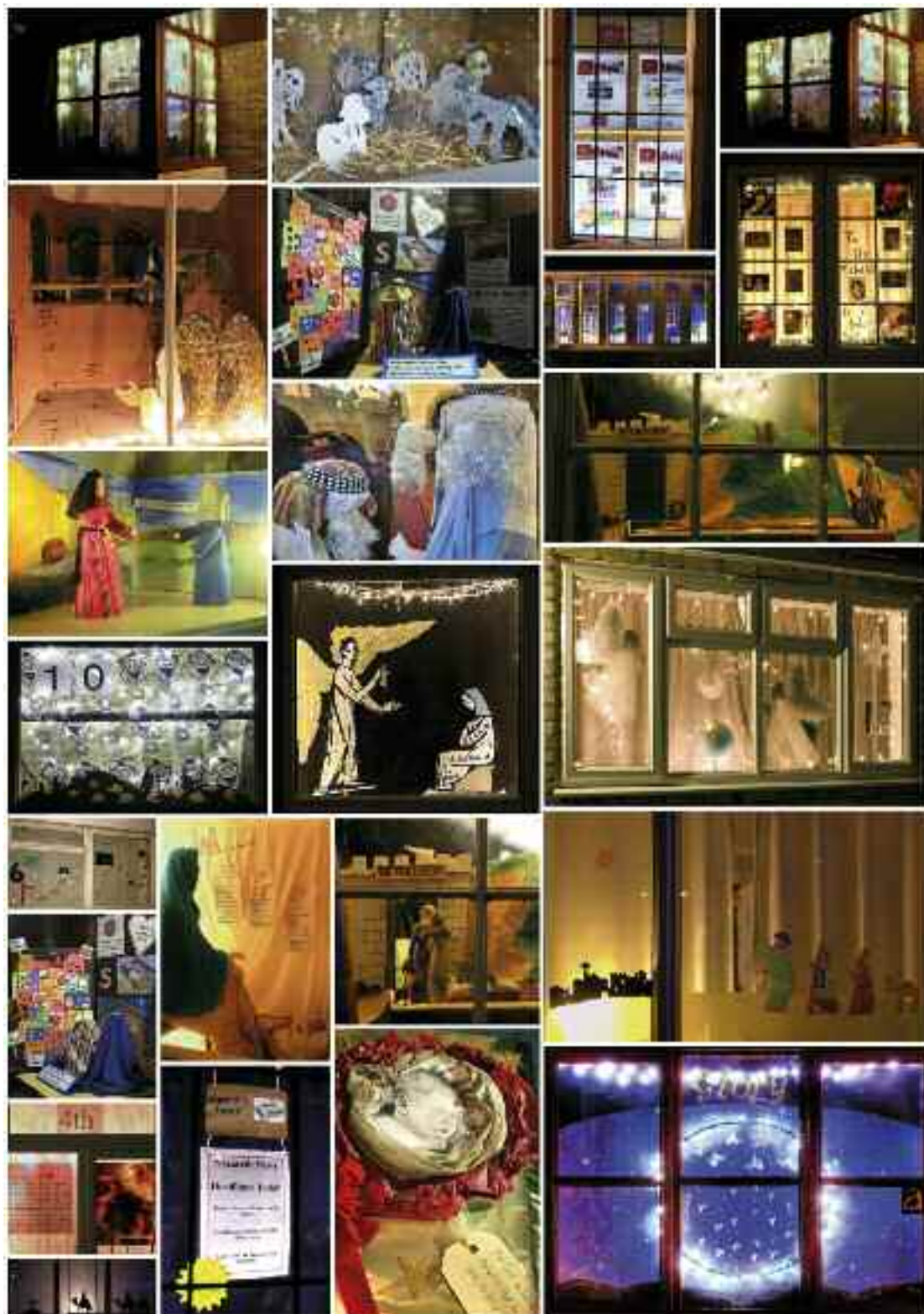
It may feel a long time since Christmas, but we would like to thank everyone who took part in the Advent Adventure in December 2014. We hope that you had a chance to see lots of the windows and/or see them online. In case you didn't work out what all the letters meant, they spelt out the phrase

**'Christmas starts with Christ'.**

As it was such a huge success, we are planning to run a similar adventure in December 2015! We will have a new theme with new things to find in the windows. If you'd like to secure your window slot it's not too early to tell us but we will put a reminder in the *Willingham News* in September!

*Kathryn Wright and  
Emma Launchbury  
[wundecided@aol.com](mailto:wundecided@aol.com)*

*Photo by Andrew Jackman*



**Cottenham Computers**

**01954 593025**

Call the experts for good honest advice



**We will come to your home or business to fix your computer**

**Got any of these issues?**

- Computer crashing
- Network Wi-Fi connection Issues
- Computer infected with viruses
- Windows won't boot
- Can't access your email
- Can't access the Internet
- Computer running very slow

With over 16 years experience it is likely we have seen your problem before. We are happy to advise you free over the phone..

**We don't charge a fortune**

**So give us a call TODAY! We wont bite!**

**Working all day? Then we can collect and deliver FREE to and from your work place\***

\* Within 10Miles of Willingham

**We cover Willingham & surrounding towns & villages**

*For all computer related problems give us a ring!*

**www.cottenhamcomputers.co.uk**



**A1**

**HOME AND GARDEN  
MAINTENANCE**

**Call 07775 725118  
or 01954 203569**

**A.G.S**

**ASHBY GARDENING SERVICES**

**HOME: 01954 261038**

**MOBILE: 07984 755310**

**LOCAL, FRIENDLY, GARDENING SERVICE**



**J & G BLINDS**

**CONSERVATORY &  
WINDOW BLINDS**



**AWNINGS**

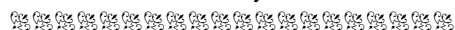
**SEALED UNITS**

**Tel: 01954 261149**

**Mobiles: 07847 559208 / 9**

**Email: sales@jandgblinds.com**

**THE PLOUGHMAN HALL  
WEST FEN ROAD, WILLINGHAM**



**Book Willingham's village hall for your  
Wedding Reception  
Birthday Party  
Private Function  
Play or Musical Event  
Club or Society Meeting**

**The Ploughman Hall**

**Offers:**

A large hall  
Bar facilities (subject to licence)  
A fully equipped kitchen  
A portable stage  
Ample off-road parking

**For details of our competitive rates  
and to make your booking,  
please contact the Parish Office  
(01954 261027)**

**The Ploughman Hall – Willingham's village hall**



**The Foot Care Clinic  
Willingham**

**Mrs Casey A. Javed BSc(Hons) Podiatry, SRCh, MChS, HCPC/State Registered**

**Mr. F.K. Javed BSc(Hons) Podiatry, MChS, HCPC/State Registered**

- General chiropody – nails, hard skin & corns
- Diabetic foot care
- Children's Feet – Growing pains, Verrucas, etc.
- Sporty Feet & associated injuries + pains
- Ingrowing toe nails –  
surgical option available
- Custom made Orthotics/  
insoles
- Biomechanics & Gait analysis



**New Clients Always Welcome**

**Saturday Appointments & Home Visits Available**

**Willingham Medical  
Practice, 52 Long Lane  
Willingham CB24 5LB**

**T: 01480 464507  
or 07807 505534**

**Scrivens Opticians  
1 Crown Place, St. Ives  
PE27 5PD**

**T: 01480 301337  
or 07807 505534**

**www.stivespodiatry.co.uk**



# CONTENTS

## FEBRUARY NEWS

Care Network Volunteer Request.....	9
Carers Support Team.....	9
Chinese New Year.....	10
Christmas in Winnipeg.....	17
Consultation on Village Pubs.....	11
Friends of the Rosie.....	15
Letters to the Editor.....	15
Macmillan Mammoth Quiz.....	5
Poem for February.....	11
St Valentine.....	10
Twilight at the Museums.....	17
Willingham School Association Update.....	8

## Clubs and Groups

Gardening Club.....	10
Mothers Union.....	12
Photography Club.....	5
Women's Institute.....	8

## Quizzes

Friends of the Library Book Quiz.....	7
General Knowledge Quiz.....	7
Quick Crossword.....	7
Quiz and Crossword Answers.....	15

## MONTHLY ITEMS

Bin Collections.....	3
Christians Together.....	12/13
Diary.....	21
Directory.....	23
Library.....	11
Medical Practice.....	16
Parish Council.....	19

*Don't forget your pancakes!*



*Shrove Tuesday: 17 February*

### Bin Collections – Wednesdays

**Please note that during February green bins will be collected monthly**

**4 February Black**  
**11 February Blue and Green**  
**18 February Black**  
**25 February Blue**

Editors take every care to ensure the accuracy of content and undertake the right to edit material submitted.

**Our PCSO (Police Community Support Officer) has left and not yet been replaced.**

**To contact local police phone 101 or email: [histon.npt@cambs.pnn.police.uk](mailto:histon.npt@cambs.pnn.police.uk)**

## Advertising

Advertising is sold on an annual basis for an insert into 12 issues beginning in January. Send any advertising queries or copy to: [willinghamnews@btinternet.com](mailto:willinghamnews@btinternet.com), marking your e-mails Adverts. The *Willingham News* team wishes to thank all the advertisers for their support and interest. They play a vital role in maintaining this publication and also in our community as local businesses supplying goods and services. If you contact an advertiser, please mention that you saw their advertisement in *Willingham News*. Thank you all very much.

For the MARCH issue: **Please note the deadline is 8 FEBRUARY.** Please send material to the following email address: [willinghamnews@btinternet.com](mailto:willinghamnews@btinternet.com). Please put *Willingham News* in the subject heading and, if possible, send copy and any photos as an email attachment NOT incorporated into the email. Paper copy may be left at the library.



- Ebay Pick-up & Drop off
- Move & Lift 'n' shift
- University Start & End of Term
- House Clearance
- Shed & Garage
- Contract Hire

**01954 260579**  
**07961 853949**  
[bluevanman.btinternet.com](http://bluevanman.btinternet.com)

### Cottenham Locks and Keys – Mobile Locksmith.

Domestic, commercial and retail lock fitting and lock opening of wooden, UPVC and aluminium doors and windows. Key Cutting. Wireless alarm installation. 24x7 emergency lockout service. Fully insured. Free quotations and surveys. Highly competitive prices.

Tel: 07952 747279. Email: [cottenhamlocksandkeys@gmail.com](mailto:cottenhamlocksandkeys@gmail.com) or visit [www.cottenhamlocksandkeys.co.uk](http://www.cottenhamlocksandkeys.co.uk)



### General Building & Plastering Services

**Jon Bullock**

30 Rook Grove, Willingham, Cambridge CB24 5EZ

Tel: **01954 261838** Mobile: **07867 965688**

Email: [john.bullock1@virgin.net](mailto:john.bullock1@virgin.net)

plastering/dry lining/screeding/rendering/general building

MARK BIRD ELECTRICAL SERVICES

**Mark Bird**  
 Electrical contractor  
 NICEIC Domestic Installer  
 Part P Approved  
 Tel: 01487 842107  
 Mobile: 07961 505189  
 Email: [mbird494@btinternet.com](mailto:mbird494@btinternet.com)



## CHIMNEY SWEEP

**J. L. Wight**

Guild of Master Sweeps, Certificates issued  
 Advice given/problems solved

**01954 253315**

[www.camsweep.co.uk](http://www.camsweep.co.uk)

26 Cow Lane, Rampton



Farm grown fruit, local vegetables, eggs, preserves, fruit juice, cakes and more  
 Coffee shop open at weekends  
 Open Tues - Sat 10 - 6 and Sun 10 - 4  
 Closed Monday  
 At Manning & Son, Station Rd, Willingham CB24 5HG  
 Tel: 01954 208015  
[www.bushelboxfarmshop.co.uk](http://www.bushelboxfarmshop.co.uk)

## WILLINGHAM MOTORS LTD

YOUR LOCAL INDEPENDENT GARAGE FOR ALL SERVICING/REPAIR REQUIREMENTS, MOT TESTING, AIR CONDITIONING, DIAGNOSTIC SOFTWARE, EXHAUSTS, TYRES

CAR SALES – P/X WELCOME CAR/VAN STOCK LOCATOR  
 QUALITY VEHICLES BOUGHT FOR CASH FREE COURTESY CARS

Tel: 01954 260467/206566 E-mail [willinghammotors@aol.com](mailto:willinghammotors@aol.com)

## ALAN'S CARPETS

CARPETS & VINYL FLOORING

since 1973

Showroom: No. 1 Station Road, Swavesey  
 or samples to your home

CALL 01954 232298



**WILLFLOWER FLORISTS**  
 134 Rampton Road  
 WILLINGHAM  
 Tel: 01954 260 831  
 Fresh Cut Flowers, Bouquets, Wreaths,  
 Wedding Flowers and Arrangements



**PAUL THOMPSON**  
 PAINTING & DECORATING, TILING  
 & PROPERTY MAINTENANCE  
 TELEPHONE 01779 527 4028 / 01954 212213

**P. LOVERIDGE**  
*Carpentry & Locksmith Services*

Tel: 01954 202907 Mob: 07811 158018  
 Email: [PAULLOVERIDGE21@GMAIL.COM](mailto:PAULLOVERIDGE21@GMAIL.COM)

**ALL ASPECTS UNDERTAKEN:**

FIXED WARDROBES	LOCKS REPAIRED & REKEYED
AUSTINE COMPANIES	EMERGENCY ACCESS
KEYING TYRES	LOOSE FETTER ALBIE
FAST & SECURE FIT	PLUMB SELLERS LOGGERS



**Steve Beaney**  
*Guitar & Bass Tuition*

Phone: 01954 260851  
 mobile: 07929 888128  
 email: [steven.beaney@btinternet.com](mailto:steven.beaney@btinternet.com)

*Acoustic & Electric  
 Guitar Repairs*

## GUITAR/UKULELE & PIANO LESSONS

*All styles catered for*

**EXPERIENCED TEACHER**  
 (Member of the Registry of Guitar Tutors)

Contact Helen on: 07798 526084  
 or visit [www.guitarlessons-cambridge.co.uk](http://www.guitarlessons-cambridge.co.uk)



## SUTTON TREE SERVICES

- HEDGE MAINTENANCE
- TREE REMOVAL, FELLING & REDUCTIONS
- GENERAL PRUNING
- STUMP REMOVAL
- FULLY INSURED
- NPTC QUALIFIED

Please call to discuss your requirements or to arrange a free quote.  
 Paul Young 07765 223 692 or 01353 775 076





## The Ouse Washes Landscape Partnership

The Ouse Washes Landscape Partnership (OWLP), supported by a grant from the Heritage Lottery Fund, has just launched its new website; visit it at [www.ousewashes.org.uk](http://www.ousewashes.org.uk)

Come and find out what makes the Ouse Washes Landscape special! This new website is intended to be a 'one-stop shop' for local people and visitors to explore the Ouse Washes Landscape, to find out what is special about the landscape, where to go and what to do.



The site features an interactive map, showing tourist attractions and important landmarks in the area, an events calendar highlighting local events, plus extensive information about the area's heritage.

For further information, please contact Mark Nokkert, Programme Manager for the Ouse Washes Landscape Partnership scheme at [mark.nokkert@cambsacre.org.uk](mailto:mark.nokkert@cambsacre.org.uk) or 01353 865030, visit the new website at [www.ousewashes.org.uk](http://www.ousewashes.org.uk), or find OWLP on Twitter, Facebook or YouTube.



## Willingham Photography Club

Our Club meets every month in Willingham Baptist Tabernacle. We aim to learn more about photography and to enjoy ourselves. The next meeting will be on

**16 February** from 8 to 10pm

We will be looking at *Textures* as a subject followed by Tea and Coffee then a photoshop tutorial on *Spring Colours*

We cordially invite anyone who takes photographs to come along and see what is on offer. The level of your expertise does not matter; nor does the nature of your camera.



Contact numbers: Anita Salmon 01954 260875

Christopher Cross 01954 260790

*In the meantime, do have a look at our website on [www.WillinghamPhotoClub.org.uk](http://www.WillinghamPhotoClub.org.uk)*



## MACMILLAN MAMMOTH QUIZ

The Macmillan Mammoth Quiz is back, now in its 7th year with a brand new, brain-teasing quiz for 2015. The Mammoth Quiz, organised by the Oundle Macmillan Committee, is Macmillan's nationwide quiz. Simply put, it is the same quiz, being held on the same day, at the same time, throughout the country. The Mammoth Quiz even holds the Guinness World Record for the world's largest simultaneous quiz. We need you to help make the 2015 Macmillan Quiz the biggest and best yet and help us to reach our target of over £200,000.

Macmillan are looking for local groups and businesses across the UK to host a quiz on **27 February** to raise vital funds for people affected by cancer. It's a really fun and easy way to raise money for Macmillan, and you can hold your quiz anywhere from the local pub or bowling club to the office or school. Previous participants have commented 'It was a great Quiz and everyone enjoyed it tremendously' and that 'the questions are so interesting and catch the imagination'.

It costs £10 to sign up to host a Mammoth Quiz. You will then be sent a welcome pack with a 2015 quiz and fundraising materials. Brand new this year is the Macmillan Mammoth Quiz website. On here you will find tips for organising your quiz, posters and tickets, a bit of information about Macmillan and even some sneaky samples.

To register for your 2015 quiz pack, find out more about the Mammoth Quiz and start downloading sample questions and fundraising materials, please log on to [www.macmillanmammothquiz.co.uk](http://www.macmillanmammothquiz.co.uk) or email [mammoth.quiz.uk@gmail.com](mailto:mammoth.quiz.uk@gmail.com)



# Karen

## BEAUTICIAN

DAYTIME & EVENING APPOINTMENTS

95 Rampton Road, Willingham  
Cambridge CB24 5JQ

Tel: 01954 260375

Email: karenench@hotmail.com

www.karenbeautician.co.uk



## O'MALLEY SOLICITORS Family Law Specialists

Divorce • Matrimonial Property & Finances • Co-habitation  
Disputes • Civil Partnership Dissolution • Children Matters  
Prenuptial Agreements, Domestic Injunctions  
Separation Agreements

For a sympathetic and sensitive approach to the most emotional  
of legal problems, contact us on **01954 202075**.

84 Rampton Road, Willingham, Cambridge, CB24 5JQ  
Tel: 01954 202075 E-mail: omalleysolicitors@googlemail.com

Authorised and Regulated by the Solicitors Regulation Authority  
SRA No: 318339



## THINKING OF REPLACING YOUR BOILER?

## THINK OF £1600 CASHBACK!



That's right, if you upgrade your boiler with IJC you will receive  
up to £1600\* cashback - paid straight into your bank account,  
just 10 days after the installation is completed.

IJC, a family run Cambridgeshire business, are your locally approved  
installer for the government backed Green Deal home improvement fund.

Funding is limited on this fantastic offer so arrange for our team to give  
you a Green Deal assessment or contact us to find out more.

call: **01954 231623**

or visit: [greendealcambs.info](http://greendealcambs.info)



Unit 10, Norman Way Industrial Estate  
Over, Cambridgeshire CB24 5QE



\*subject to availability and eligibility - terms and conditions apply visit [www.greendealcambs.info](http://www.greendealcambs.info)

## Universal Fencing Co Ltd

Established  
30 Years

Tel: 01954 231335  
Fax: 01954 231202

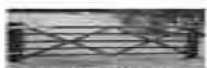
[www.universalfencing.co.uk](http://www.universalfencing.co.uk)  
SUPPLY ONLY OR SUPPLY AND ERECT  
FREE ESTIMATE



Pa Brade



Peathesidge



Field Gates



Security Fencing

Unit 11 Norman Way Ind Est, Over, Cambridgeshire, CB24 5QE  
Open: MON-FRI 7.30am - 5pm  
SAT 7.30am - 12pm

Commercial, agricultural, industrial & domestic  
Fencing contractors



## Church End Carpet & Vinyl Centre

We are a family run business, established in Cottonham in January 1982

We offer a comprehensive range of quality carpets, vinyls and laminate  
flooring at highly competitive prices with a great service and fitting

76 High Street  
Cottonham  
Cambridge  
CB24 8SD

Email: [sales@churchendcarpets.co.uk](mailto:sales@churchendcarpets.co.uk)  
Tel: 01954 250287  
[www.churchendcarpets.co.uk](http://www.churchendcarpets.co.uk)

Open: Monday, Tuesday, Wednesday, Friday: 10:00 - 18:00  
Saturday: 10:00 - 17:00

# JASON KIRBY

## Professional Painting & Decorating Ltd

All Aspects of Internal &  
External Decorating Undertaken.

Period, Residential & Commercial Properties.  
City & Guilds Qualified.

Full Public Liability Insurance.

For Quality & Reliability At Competitive Rates  
References Available.

A local established business built on reputation  
and recommendations

**Tel/Fax: 01954 211775**

**Mobile: 07966 174431**

**[jasonkirbyltd@gmail.com](mailto:jasonkirbyltd@gmail.com)**



*A Professional Service from Start to Finish*

# Friends of Willingham Library

## Book Quiz

(Answers on page 15)

Who were the authors of these books or plays about Doctors?

- 1 *Doctor Zhivago*
- 2 *Doctor in the House*
- 3 *Doctor Thorne*
- 4 *Doctor Dolittle*
- 5 *Doctor Sleep*
- 6 *Doctor Proctor*
- 7 *Doctor Syn*
- 8 *Doctor Faustus*
- 9 *Doctor Stephen Maturin*
- 10 *Dr John H. Watson*

## General Knowledge Quiz

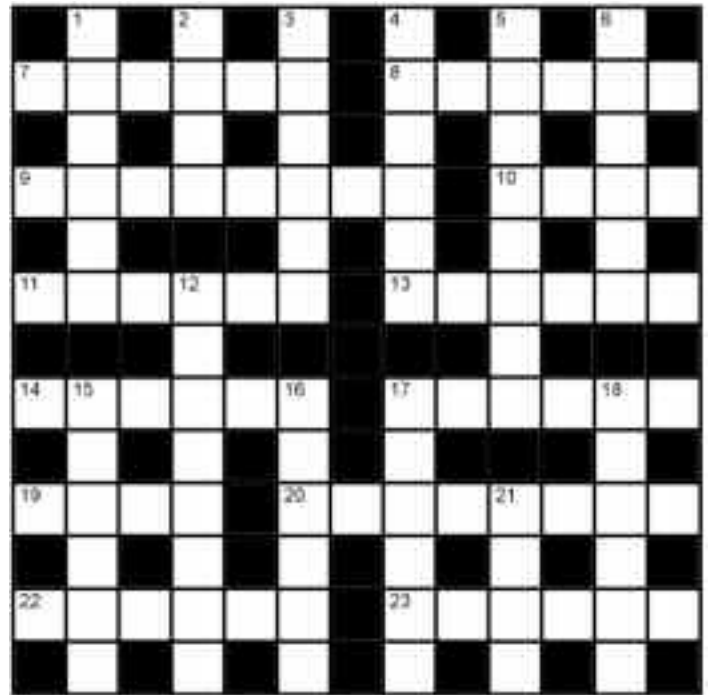
### – answers begin with L

(Answers on page 15)

- 1 According to Homer's Odyssey, who was Odysseus' father?
- 2 Lugdunum is the Roman name for which French city?
- 3 Where is Lime Street Station?
- 4 Which African river flows through South Africa, Botswana, Zimbabwe and Mozambique?
- 5 Who painted *A Dance to the Music of Time* in 1634?
- 6 Who is the patron saint of blind people?
- 7 On which hill in London does St Paul's Cathedral stand?
- 8 Former name given to 1 August, once observed as harvest festival?
- 9 Founder member of *Destiny's Child*?
- 10 Pioneer director of spaghetti westerns?
- 11 Where is Bishop Grosseteste University?
- 12 Name two counties which border Rutland?
- 13 Creators of *Spitting Image* were Peter Fluck and who else?
- 14 Where was Alfred Hitchcock born?
- 15 What was the name of Hitchcock's first thriller film?
- 16 Photosynthesis occurs mainly in which part of a plant?
- 17 Katie Johnson plays the delightfully dotty old lady in which 1955 film directed by Alexander Mackendrick?
- 18 Which is Britain's largest lake?
- 19 Tree with racemes of bright yellow flowers?
- 20 Goods or wreckage lying on the sea bed?

# Quick Crossword by Willow

(Answers on page 15)



### Across

- 7 Gadget (6)
- 8 Human (6)
- 9 Annual Oxbridge contest (4-4)
- 10 Alcoholic drink made with honey (4)
- 11 Poll (6)
- 13 Having a strange allure (6)
- 14 Wading bird – symbol of the RSPB (6)
- 17 Fortified wine (6)
- 19 Company's graphic (4)
- 20 Compulsory (8)
- 22 Population count (6)
- 23 Make last by frugal use (3,3)

### Down

- 1 Soft hat (6)
- 2 Caledonian skirt (4)
- 3 Rent payer (6)
- 4 Block (6)
- 5 Brass instrument (8)
- 6 50th state (6)
- 12 Team game played with nets on sticks (8)
- 15 Flowering plant (6)
- 16 Beat comprehensively (6)
- 17 Continuation of story (6)
- 18 Contrite (6)
- 21 Wild goat (4)



## Willingham School Association Update

We would like to thank everyone for their support in 2014. In the Autumn Term, we raised over £2700 for the school. We hope you can support some of our events in 2015. Why not put these dates in your diary? Come and enjoy great social events and raise money for the school and other charities.

**Friday 6 February:** Hemsals Farm Cured Meats & Wine evening

**Friday 13 March:** 'Red Nose Day' Wine Quiz

**Sunday 22 March:** Easter Egg Bingo

**Saturday 6 June:** Summer Fete

**Sunday 5 July:** Fen Gallop (formally known as the Fun Run). There will be a new course this year including a 10K run and a 4 mile run. We are very grateful to Tylers Estate Agents and Thomson Webb and Corfield for their generous sponsorship this year. You can find out more and register for the run via the school website. We will also post updates each month in *Willingham News*.



Willingham Primary School

## Willingham County Primary School – New Community Governor

As a result of reconstituting our governing body, we currently have one vacancy for a Community Governor.

The role of the governing body is to work with the Headteacher and staff to make sure the school provides a good quality education for its students, providing strategic direction to support the Headteacher to make the operational day to day decisions.

The role of governor consists of three interwoven strands:

- to take a largely strategic role in the running of the school
- to act as a critical friend
- to ensure accountability of the governing body to the parents, and of the Headteacher to the governing body.

The role of governors in the school covers 4 key areas –

1. Finance and Premises – ensuring the resources of the school are effectively used and maintained to ensure outcomes for children are effective as possible
2. Personal – overseeing staffing within the school
3. Standards – ensuring pupils within the school perform to their potential
4. Pupil Support – ensuring effective interventions are in place to support all pupils to achieve.

The governing body has people from a range of different backgrounds and experience whose role is to support and challenge the school to become outstanding. Community Governors usually live or work in the community served by the school or are people committed to good governance and the success of the school. Being a governor is demanding but rewarding and a good way of putting something into your local community.

Governors do not need to be experts to tackle the range of responsibilities expected of them. The term of office for a governor is 4 years. Any governor elected will be required to undergo a DBS check as part of their induction. Help, advice and training are available from various sources. A full training package is available from Cambridgeshire County Council.

If you are interested in this exciting opportunity to make a contribution to the community, we would like you to consider becoming a Community Governor. For this role, elected members of the local authority (County Councillors) and school staff are not eligible to apply.

For more information, or to request a nomination form, please contact Jonathan Lewis, Chair of Governors on [jonathan.lewis@peterborough.gov.uk](mailto:jonathan.lewis@peterborough.gov.uk). All nomination forms should be sent to the school office by **13 February**. If more than one suitable nomination is received, a ballot will be held.

## Willingham Women's Institute



The next meeting will be on  
**Monday 9 February**  
at 7.30pm in the Social Club

*Robert Sayles Dig*  
with Alison Dickens

New members are always welcome; please contact Jacky on 261831 if you are interested. Come for a taster – we have some great meetings lined up:

**Monday 9 March** – General Meeting and *Origami* with Bobby Alecock

**Monday 13 April** – Social, Beetle Drive and Bring and Buy

**Monday 11 May** – *Donkey Sanctuary* with Liz Wright

At every meeting we have great refreshments made by members, a chance to book on all kinds of trips and activities run by County WI and a raffle. Most of all, it's an opportunity to meet and chat to lots of other women – with over 60 members, Willingham WI is one of the largest (and friendliest!) in Cambridgeshire.



## Old Willingham

Drama on Church Street around 1905 as the shop on the corner with Long Lane burns. Crowds have gathered to watch and the village fire pump is in action with a rather puny jet of water spraying on the building. But it is all in vain and by morning there is nothing left but rubble. Fire was a constant hazard in the days of thatched roofs and open fires. Within a few years a new shop was built which is now One-Stop. The little cottage behind the rubble survived the fire and remained for another hundred years – but eventually fell to redevelopment after becoming dilapidated.



See more photos at [www.oldwillingham.com/](http://www.oldwillingham.com/)  
If you have stories or memories about this picture, please contact Jon Edney, 31 High Street or [oldwill@oldwillingham.com](mailto:oldwill@oldwillingham.com).

Care Network Cambridgeshire

18 Broadway House

149-151 St Neots Road

Hardwick

Cambridge CB23 7QJ



Tel: 01954 211875

E-mail: [lynette.p@care-network.org.uk](mailto:lynette.p@care-network.org.uk)

## What's your New Year's Resolution?

Could you become one of our volunteers who, like our Help at Home volunteers in 2014, provided practical and emotional support for people who were unwell, returning home from hospital or in a crisis? Or our Community Navigators who provided information to help older people make informed choices about useful or enjoyable activities in their area.

Your New Year's Resolution could turn a small amount of your time into a big difference in someone's life!

We believe it's important that volunteering is flexible and can fit around your other commitments. You give as much or as little time as you like.

Care Network volunteers are people who help older, isolated or vulnerable people living in Cambridgeshire to stay independent and maintain social contact. They are all ages and from many different backgrounds, but have one thing in common; they gain great satisfaction from helping people. They are trained, supported and paid any out of pocket expenses.

Could you be part of our volunteer team and make a difference with just a few hours a month or are you interested in setting up a group or activity to support older or vulnerable people where you live?

Check our website on [www.care-network.org.uk](http://www.care-network.org.uk), call 01954 211919 or email [volunteering@care-network.org.uk](mailto:volunteering@care-network.org.uk) for more information.

Charity No. 1120693



## South Cambridgeshire Carers Support Team & Physical Disability Service

The popular drop-in events for adults living with a long-term illness or disability or age-related condition, and people providing unpaid care for an adult relative or friend, which are run by the Carers Support Team and Physical Disability Service, are continuing in 2015.

Below are the dates of the early Spring events held in South Cambridgeshire:

**Bar Hill** - Community Room, Tesco Extra Store (joint carers and adults drop-in)

**Monday 16 February**, 10 30 am – 1 30 pm

**Monday 16 March**, 10 30 am – 1 30 pm

**Cambourne** – Cambourne Library (drop-in for carers only)

**Wednesday 18 February**, 1 30 – 3 30 pm

**Wednesday 18 March**, 1 30 – 3 30 pm

These drop-in events are held monthly in locations across the county and details of all the events can be found on [www.cambridgeshire.net](http://www.cambridgeshire.net).



## WILLINGHAM GARDENING CLUB

Next Meeting: **Monday 2 February**

*Isles of Scilly* with Peter Walker

Meetings are held at the Social Club on the first Monday of the month (except January and August) and start at 7.30 pm. There is usually a speaker on a subject of interest to gardeners and plant lovers and there is a plant raffle at each meeting.

The club welcomes new members. Our annual subscription is a modest £12.50, though you may attend one meeting for £2. Simply come along or ring Celia (01954 261394).

### Outings

The programme for 2015 will start in May. Look out for details in the Club's monthly magazine and in *Willingham News*.

### Some Gardening Tips for February

- 1 Winter is still with us, but it is warm enough indoors and in greenhouses to grow seeds. A mild spell will also allow you to plant seeds outside.
- 2 Improve your soil, especially if your garden is waterlogged from time to time; the soil in Willingham tends to be fairly light with stones. Organic matters, such as your own well-rotted compost or a bought soil conditioner, will help improve the texture and growing conditions.
- 3 Feed fruit trees and bushes around the roots, as far round as the branches spread, with a sulphate of potash to improve the strength and vigour of the plants. Water potash fertilizer on trees and bushes in grassy areas.
- 4 Some seeds need up to 20 weeks to be ready for planting out (after all danger of frost has gone) so plant now in seed trays. Don't forget to read the seed packet's instructions.
- 5 Use new compost, rather than last year's compost, for better results.
- 6 Take a bit of time to plan your borders, deciding what you want to plant and where.
- 7 Split up snowdrops when they've finished flowering if they are now too large for the existing position.
- 8 Deadhead any flowering bulbs when they've finished flowering. Take the stalks out at soil level with finger and thumb. The leaves should be left to die down naturally, the nutrients in them will then return to the bulb.
- 9 Plant up lilies in pots for flowering in the summer.
- 10 Dead head winter pansies.

**There are many other jobs to do, but that's enough for now!**

## Chinese New Year – 19 February

Chinese New Year is a very important Chinese holiday and is a time for family celebrations with feasting, gift-giving and fireworks. It's also known as Spring Festival, the literal translation of the modern Chinese name. Chinese New Year is a 15 day holiday beginning on the first day of a new moon and ending on the day of the full moon with the Lantern Festival - lanterns are often red to symbolise good fortune. The Chinese calendar is luni-solar therefore the New Year is on a different date every year. The years in the calendar rotate through a 12 year pattern of animal symbols - 2015 will be the year of the Goat



The festival was originally a time to honour deities and ancestors but now regional customs and traditions vary. Often New Year's Eve is an occasion for Chinese families to gather for a celebration dinner. It is also traditional for every family to thoroughly clean the house, in order to sweep away any ill-fortune and to make way for good incoming luck. Decorations are usually red and incorporate popular themes of good fortune, happiness, wealth and longevity.



### St Valentine's Day

St Valentine's association with the giving of cards and love tokens is not at all clear. Originally St Valentine, whose Saint's day is 14 February, was a priest of Rome who was imprisoned for helping persecuted Christians. He became a convert and restored the sight of the gaoler's daughter but was clubbed to death in about 270AD.

It is generally thought that the day became associated with romantic love from the belief that the mating season of birds began on 14 February and the tradition of giving presents on that day.

Chaucer refers to it in his *Parliament of Fowls* (c.1381)

*For this was on seynt Volantynys day*

*Wan euery bryd comyth there to chese his make [match]*

And Shakespeare in *Midsummer Night's Dream*:

*Good morrow, friends, Saint Valentine is past;*

*Begin these wood-birds but to couple now?*

Happy Valentine's Day!

*Brewer's Dictionary of Phrase and Fable (19th ed.)*



## Willingham Library

www.cambridgeshire.gov.uk/library  
0345 0455225

### Opening Hours

Monday	Closed	
Tuesday	10 am – 1 pm	2 – 5 pm
Wednesday	Closed	
Thursday		4 – 7 pm
Friday	10 am – 1 pm	
Saturday	10 am – 1 pm	

### Library News

#### Engage in the Afternoon

Come and join in with these special sessions for adults on the first Wednesday of each month from 2 to 3 30 pm. There are speakers, tea/coffee/biscuits and a chance to change books.

In January James Nicol hosted a *Dementia Friends* – we had a small group but it was a very interesting and enjoyable talk.

These talks are free but donations are welcomed towards refreshments.

Future Talks:

- **Wednesday 4 February** – *A Night in the Life of a Badger* with Peter Pilbeam
- **Wednesday 4 March** – *Pompeii* with Richard Priestley

#### Tuesday Afternoon Story Time for Under 5s

Story Times are on the first and third Tuesdays of the month during term-time, from 2 to 2 30 pm. The next session will be **Tuesday 3 February**, and the following one on **Tuesday 3 March** after half-term. Parents/Carers must accompany children. Attendances have dropped at the sessions recently so why not give it a try? It's fun, free and you will be supporting your local library.

#### Commercial Notice Board in the Library

In January a new noticeboard was installed in the Library for commercial and business advertisements. We can accept any size up to A4 at the rates below:

A4 – £6 per month or part thereof

A5 or less – £4 per month or part thereof

Please ask at the Library for details.

#### And books...

Come along and browse the shelves, including the Quick Picks and the special themed display that visits the different libraries. If you can't find what you want, ask the Librarian or visit the Library website and reserve one of the huge range of books to pick up from the Library. There are also many eBooks and eAudio books available for free downloading from the website for Library members.

## FOWL Poetry & Prose Evening – Wednesday 11 March at 7 30 pm

A date for your diary: Friends of Willingham Library are proud to present another of their very popular Poetry and Prose evenings, once again kindly hosted by Willingham poet Chris Lacey.

Bring along a favourite piece of poetry or prose to read aloud and share or just come along to listen and enjoy a glass of wine and some nibbles. The theme for the first part of the evening will be *Young and Old and In Between* interpreted in any way, but could be humorous as well. After the break anything goes!

### FEBRUARY

A kiss for the month of February

For can Spring be far behind?

With January gone the dull days

Bring brighter times to mind.

A short sweet month is February

With love waiting in the wings.

And when the birds return again

With happiness my heart sings.

*Chris Lacey*

Chris has just won the Kingston-upon-Thames Library Poetry Competition on the theme of *Remember* so very well done to her!

### South Cambridgeshire District Council (SCDC)

## Consultation on Greater Protection for Public Houses

SCDC is seeking views concerning the proposed use of article 4 directions to help retain village pubs. Article 4 directions could be used to withdraw the permitted development rights which currently allow their conversion to other uses such as retail or offices or for their demolition. An article 4 direction does not prevent the development but does require planning permission for the development to be obtained first.

SCDC will use the results of the consultation to help them decide whether to use article 4 directions to provide an additional safeguard for village pubs and to which pubs specifically they could be applied.

You can find out more about when a change of use is considered permitted development on the SCDC website [www.scambs.gov.uk](http://www.scambs.gov.uk) in Planning and Control/Planning Policy/Consultation on Greater Protection for Public Houses.

You can have your say during the consultation by filling in the on-line survey or downloading a response form.

The consultation closes at midnight on **Monday 23 February**.

# CHRISTIANS TOGETHER IN WILLINGHAM

ST MARY AND ALL SAINTS  
CHURCH STREET, WILLINGHAM  
[www.willinghamchurch.org](http://www.willinghamchurch.org)

## Services

### 1 February

9 00 am BCP Communion Service  
10 30 am Family Service

### 8 February

10 30 am Communion Service

### 15 February

9 00 am *Sorry no 9am service today*  
10 30 am Communion Service

### 22 February

10 30 am Communion Service

We have a variety of styles of worship and we hope you will find one that suits you. You will be warmly welcomed whenever you come.

**9 am Traditional** – These are traditional Church of England Communion and Morning Prayer services. There is no Sunday School provision for children at this service.

### 10 30 am Informal and Child friendly

Modern worship with Sunday Clubs for children and young people in the Octagon during term-time. On the 1st Sunday of the month (and 5th when there is one) we stay together in church for a 'Family Service'. Children are always very welcome. Fidget bags are available for use in the pews.

If you know of anyone who is ill or who for some other reason would like a visit, please let the Vicar (Linda) know.

## St Mary and All Saints Events

**Bubbles** – is held in the Octagon every Friday during school term time from 10 – 11 30 am. Bubbles is for children from nought to pre-school with their parents or carers. It is great fun with toys, a simple craft activity, songs, refreshments and good company. A voluntary donation of £1 helps with our running costs but is not compulsory. Contact Heather (270063) or Linda (263187) for further details.

**Messy Church** – usually runs on one Saturday a month between 3 30 and 5pm. This is for all ages and provides fun, food and family worship. It involves all the Churches in Willingham and is held in the Octagon and Church. There are different craft activities, a story time and a time to eat together. Come with your children to enjoy. Contact Linda at [revlin@me.com](mailto:revlin@me.com) or 263187. **There will be no Messy Church in February due to half-term.**

**time4T** – a friendly get-together that is open to everyone every Friday 2 – 4 pm in the Octagon. Good company. £1 includes tea and biscuits. More information available from Alan (261349), Rosemary (205718) or David and Mary (261353).

**Cake Stall** – at 10 am on the first Saturday of each month. It is held in the church porch and proceeds go towards the work and upkeep of St Mary and All Saints.



WILLINGHAM SALVATION ARMY  
Silver Street, Willingham CB24 5LF  
01954 261108

## Services

**1 February** Evening Worship

**8 February** Evening Worship

**15 February** Evening Worship

**22 February** Evening Worship

All at 5 pm. All welcome.

## Salvation Army Events

**Coffee Morning:** Fortnightly Mondays 10 30 am – 12 noon  
**9 and 23 February.** Please join us for refreshments and a chance to chat to old and new friends.

**Luncheon Club:** Fortnightly at 12.30 pm on  
**12 and 26 February.** Price £4. Please ring Daphne on 01954 260568 to book in advance if possible.

**'Nimble Fingers' Craft Meeting:** Mondays 2 – 4 pm. Bring your crafts and join with others. Learn the skills of embroidery. Tea, coffee and good company provided.

## MOTHERS' UNION

Our next monthly meeting will be on  
**Monday 23 February** at 2 30 pm. "Paul and Friends" will be entertaining us.  
All are welcome to join us.



## Charity Lunch

The February charity lunch will be held on the  
**21 February** at 1pm by Anne Gormley at 3 Love Lane.  
We will be supporting Magpas as our charity this year.  
The lunch consists of soup, bread & cheese and costs £5.  
All are welcome.



# CHRISTIANS TOGETHER IN WILLINGHAM



## Services

### 1 February

- 9 00 am Modelling Godly character – *Traditional service*  
 10 30 am Modelling Godly character – *Contemporary Service*  
 6 00 pm A widows son – *Evening Worship*

### 8 February

- 10 30 am June Love – *Family Worship\*\**  
 6 00 pm Showdown at Mt Carmel – *Evening Worship*

### 15 February

- 10 30 am Discipleship2 – *Altogether Service*  
 6 00 pm Stormy Weather – *Evening Worship*

### 22 February

- 10 30 am Making Good Work – *Family Worship \*\**  
 6 00 pm Prayer Focus – *Evening Worship*

(\* = Sunday club for children)

## Baptist Events

**TOPS: Toddler group:** Tuesdays at 9 45 am for 18 months plus in the church. Great place to meet other families whilst the children enjoy the activities and playing. Currently there is a waiting list. Please contact Hilary Wyllie for further information – 01954 260051.

**Little Notes:** Thursdays 10 – 11 15 am – half an hour of singing with instruments and actions followed by free-play, refreshments and a chance to meet other parents or carers. For all pre-school children aged 1-4, with a quieter space set aside for babies under the age of 1. Please contact Sharon Sennitt on 01954 782345 for further information.

**Open Door Coffee Morning:** Wednesdays 10 – 11 30 am. This is a chance to chat with old and new friends over tea and coffee all welcome. Please contact Cynthia Nolan for further information – 01954 202240.

**Kids' Friday Club:** Fridays at 6 30 – 7 30 pm in the church for children of primary school age year 1 upwards. Action packed hour with craft, games, songs, drama all based around a bible story. Please contact Lorriane Bald for further information – 01954 261189.

**Men's Breakfast:** 21 February – 7 45 am in the Baptist church for a hearty cooked breakfast followed by a short topical talk. Please contact Pete Sacre for more information – 01954 261655, sacrepete@yahoo.co.uk.

**Life Matters** – Recent research indicates that men need to spend some time with men every now and again – just as well the next group event is planned for **4 February** for a curry and talk by Ian Kydd, entitled *From Downing Street to Great Shelford, via Beirut and Afghanistan*. Ian was a Press Officer to Margaret Thatcher at 10 Downing Street from 1981 to 1983. In 2006 he was in Beirut for the Israel/Hezbollah war and 2007 in Afghanistan in Kabul and Helmand Province, amongst many other postings around the world. Ian now trains diplomats and has a wealth of experiences to share. If you are interested or have questions, email us at: lifemattersformen@gmail.com.

## CHURCH OF THE SACRED HEART

19 Needingworth Road, St Ives

[www.sacredheart-stives.org](http://www.sacredheart-stives.org)

### Weekend mass times:

**St Ives:** Saturdays at 5 pm; Sundays at 8 am and 11 am

**Bar Hill Church Centre:** Saturdays at 6 pm

## CHRISTIANS TOGETHER PRAYING FOR THE PEOPLE OF WILLINGHAM

In February

Church Lane, Church Street,  
Conference Close and Covent Garden

will be in our thoughts.

# CHIMNEY SWEEP

## Cambridgeshire Trading Standards Approved



- Fully insured
- Enhanced CRB Check
- Certificates issued
- Bird nests removed
- All types of chimney swept
- Bird Guards and Cows fitted/removed
- No Mess, No Fuss

MAKE AN APPOINTMENT  
TODAY WITH

# SWEEPOVER

Tel: 01954 230777

Mob: 07779711458

[www.sweepover.co.uk](http://www.sweepover.co.uk)

19 New Road, Over, CB24 5PJ



# MOBILITY EQUIPMENT

STAIRLIFTS, SCOOTERS, WHEELCHAIRS,  
RISING CHAIRS, BEDS, WALKERS, TOILET &  
BATHING AIDS, KITCHEN & HOUSEHOLD  
AIDS, CONTINENCE CARE, CUSHIONS

HOME VISITS AVAILABLE

5 ROOKERY PLACE,

FENSTANTON, PE28 9LZ

Tel: 01480 465533

[www.orchard-mobility.co.uk](http://www.orchard-mobility.co.uk)

Monday to Friday 9.30-4.00

Saturday 9.30 - 12.30



# A.R.Aspinal & Sons Ltd

Tel: 01954 234966 Fax: 01954 234967  
Unit 11 Norman Way Ind Est, Over, Cambs, CB24 5QE.  
[www.araspinal.co.uk](http://www.araspinal.co.uk)

WE STOCK A FANTASTIC RANGE OF NATURAL PAVING  
PRODUCTS COME AND VISIT OUR NEW DISPLAY AREA.

Bricks Concrete Blocks Lintels Cement Sand  
Gravel Hardcore Timber Fixings Footwear  
Decorating Supplies Industrial clothing Paving Slabs

KEY CUTTING NOW IN STORE



WE OFFER A FREE LOCAL DELIVERY SERVICE!

# Andy Tibbett & Sons Painting & Decorating



\* All internal & external work carried out to a high standard

\* Trade references can be supplied

\* Very competitive pricing

\* A prompt & polite service from a name you can trust



Telephone: 01954 230810

Mobile: 07717 493723

Email: [andytibbett@hotmail.co.uk](mailto:andytibbett@hotmail.co.uk)

# OLNEY PLUMBING AND TILING

GENERAL AND DOMESTIC PLUMBING  
FLOOR AND WALL TILING  
BATHROOMS  
PROPERTY MAINTENANCE  
FULLY QUALIFIED AND INSURED  
ALL WORK GUARANTEED  
LOCAL FRIENDLY SERVICE

TELEPHONE • 07703-783615

01954-260844

E-MAIL • [STEVE@OLNEYPLUMBING@YAHOO.CO.UK](mailto:STEVE@OLNEYPLUMBING@YAHOO.CO.UK)



## Friends of the Rosie

Happy New Year to all our customers and supporters. The Friends of the Rosie wishes everyone a prosperous and healthy 2015.

With your help we raised a massive £2,186.81 in 2014, from the sale of hand made toys and clothes plus second hand books and craft equipment, to help make the Rosie a more comfortable environment for mothers and babies.

If you have any spare polyester toy stuffing or yarn we are in urgent need of your donation.

Follow us on the Rosie in Stitches facebook page. New knitted clothes and toys for sale on our website [www.rosieinstitches.org.uk](http://www.rosieinstitches.org.uk).

This year we have a small display at the Tea Bar, Outpatient Department, Rosie Hospital at Addenbrooke's.

Our next stall will be:

**Bar Hill Community Market on**

**Saturday 7 February 10 30 am – 2 pm**

**selling discount baby clothes, new toys and gifts**



*Tiny mushroom on the plum tree in our garden*  
by Stephen Drake

### Crossword Answers:

Across: 7 Device, 8 Mortal, 9 Boat-race, 10 Mead, 11 Ballot, 13 Exotic, 14 Avocet, 17 Sherry, 19 Logo, 20 Required, 22 Census, 23 Eke out.  
Down: 1 Fedora, 2 Kilt, 3 Tenant, 4 Impede, 5 Trombone, 6 Hawaii, 12 Lacrosse, 15 Violet, 16 Thrash, 17 Sequel, 18 Rueful, 21 Ibex.

### General Knowledge Quiz Answers:

1. Laertes 2. Lyons 3. Liverpool 4. Limpopo  
5. Claude Lorrain 6. St Lucy 7. Ludgate 8. Lammas  
9. Letoya Luckett 10. Sergio Leone 11. Lincoln  
12. Lincolnshire and Leicestershire 13. Roger Law  
14. Leytonstone, London 15. *The Lodger* 16. Leaves  
17. *The Ladykillers* 18. Loch Lomond 19. Laburnum  
20. Lagan

### FOWL Book Quiz Answers:

1. Boris Pasternak. 2. Richard Gordon. 3. Anthony Trollope. 4. Hugh Lofting. 5. Stephen King. 6. Jo Nesbø.  
7. Russell Thorndike. 8. Christopher Marlowe.  
9. Patrick O'Brian. 10. Sir Arthur Conan Doyle.

## Letters to Editor

Dear Editor

On Christmas Eve someone dropped a Christmas present in Rampton End which was run over and spoilt before we could get to it and unfortunately had to be thrown away. The label showed it was to Vera from Jean. Perhaps if someone knows either Jean or Vera they could explain what happened to the parcel.

*Sue Chambers*

Dear Editor

Please can I say a massive thank you to everyone that bought reindeer, 'stick' Christmas trees and handmade decorations from our stall in Rampton End and at the bakers. In the three weeks up to Christmas we raised a total of £520. The money is for 'Sebslegs' [www.treeofhope.org.uk/sebs-legs/](http://www.treeofhope.org.uk/sebs-legs/). This is a fund to send our friend's son Sebastian to the US for an operation that he needs. If successful it will enable him to walk (full details on the website). A special thank you also to Boswell's Bakers and staff in Willingham who allowed us to display the crafts in their window and took £202 of the total.

*Steve and Sue Chambers*

Correction

Dear Editor

In the January issue there was a letter from Mr Peter Dennis stating that Deborah Rennie had been selected as the UKIP parliamentary candidate for the South Cambridgeshire constituency.

This in fact was incorrect, Deborah was selected as the prospective parliamentary candidate for the South East Cambridgeshire constituency, this constituency includes the wards of Willingham and Over.

*Martin Hale*

Dear Editors

We want to congratulate everyone connected with the *Willingham News* for the great work you have all done in producing and delivering the magazine to every house in the village. The range of articles provides interest for everyone. The beautiful photographs and colourful cover pictures are summed up in the January cover. The organisation of all the material – news, articles, adverts etc – is impeccable. We are so fortunate to have a village magazine of such high quality. Well done! We look forward to another year!

*This letter was delivered anonymously to the Parish Office. The Editors and all concerned with the Willingham News thank you for your kind comments!*

## Pastoral Letter

We have been unable to publish a Pastoral Letter this month, but we are hoping to do so in the March issue



## WILLINGHAM SURGERY & LONGSTANTON BRANCH SURGERY

**Reception Tel: Willingham 01954 260230 Longstanton 207600 Dispensary 260073**

**District Nurse Team: 01223 726469 Option 2**

**Health Visitors: 01954 207612**

**Out of hours cover: Ring 111**

**Website: [www.willinghammedicalpractice.nhs.uk](http://www.willinghammedicalpractice.nhs.uk)**

**Goodbye** to our long serving practice nurse Beryl Cook who is retiring at the end of January. We shall all be sorry to see Beryl go and will miss her expertise. Thank you to all of you who sent cards, signed her Retirement Book and contributed to a retirement present.

**Welcome** to our new practice nurse Claire Davree who will start working with us from the end of January. Claire has worked with us over the years as a District Nurse in the area so some of you will already know her. We look forward to working with her and I am sure you will all welcome her to the team.

**Our Christmas Lucky Squares** raised a **Grand Total of £328 in aid of MAGPAS**. Thank you to all who donated prizes and bought lucky squares. A list of prize winners is available in reception. We would also like to extend our thanks for all the lovely Christmas cards and gifts we received at our surgeries and for your kind words, which were much appreciated.

**The Friends and Family Test** has now been extended to include GP practices. You can give feedback about our service either by completing a very quick questionnaire in surgery which takes about 2 minutes, or by going on line to our website or the NHS Choices website. We hope you would feel satisfied that you could recommend us to your friends and family.

**Hearing Help Service (formerly CAMTAD)** Sessions will now increase to monthly and will be held on **every 3rd Wednesday of the month from 2 – 4 pm** at Willingham Surgery. No appointment necessary. Just come along to get your free NHS hearing aid batteries and for help and advice regarding your hearing problems. Next dates are **Wednesday 18 February and Wednesday 18 March**.

**Carers Support Meeting** The next meetings are on **Wednesday 11 February and Wednesday 4 March 2 – 4 30 pm**, at Willingham Surgery. Come along for a friendly chat and learn about the support available to you. Ring Karen at the surgery for details.

**AAA Screening Clinics** The clinics for this area will be held at Willingham surgery on **Wednesday 4 February and Tuesday 3 March** and then **every 1st Tuesday of the month** thereafter. Abdominal Aortic Aneurysm is a condition where the aorta (the big blood vessel which takes

<b>WILLINGHAM SURGERY NORMAL OPENING HOURS</b>		
Monday	8 30 – 1 00	2 30 – 6 00
Appointments	8 30 – 11 00	3 00 – 6 00
Tuesday	8 30 – 1 00	2 00 – 6 00
Appointments	8 30 – 11 00	3 00 – 5 30
Ante Natal/Baby Clinic		2 00 – 4 00
Wednesday	8 30 – 1 00	2 00 – 7 00
Appointments	8 30 – 11 00	4 30 – 7 00
Thursday	8 30 – 1 00	Closed from 1 00 pm
Appointments	8 30 – 11 00	Half day
Friday	8 30 – 1 00	2 00 – 6 00
Appointments	8 30 – 11 00	3 00 – 5 30
Emergencies		4 00 – 6 00
<b>WILLINGHAM PHARMACY Tel: 01954 261787 NORMAL OPENING HOURS</b>		
Monday	8 30 – 1 00	2 30 – 6 30
Tuesday	8 30 – 1 00	2 00 – 6 00
Wednesday	8 30 – 1 00	2 00 – 7 00
Thursday	8 30 – 1 00	CLOSED
Friday	8 30 – 1 00	2 00 – 6 30

blood from the heart around the body) gets weak as we get older and swells up. This swelling could potentially burst with fatal consequences. **Men aged over 65 are more likely to have an AAA and are eligible for free screening.** They will receive an invitation letter to attend for a simple test called an ultrasound scan and the appointment lasts less than 10 minutes. **For more details ring 01223 256909** or visit the website [www.aaa.screening.nhs.uk](http://www.aaa.screening.nhs.uk) or NHS Choices website [www.nhs.uk](http://www.nhs.uk)

**Counselling at Willingham Surgery – Julia Hall MBACP**  
The New Year is often a time of change and, with this in mind, counselling is often able to help people make choices and reach decisions about how to handle and move forward with their concerns about the future. Julia is now able to offer a **free 30 minute taster session** at the surgery with a view to setting up some private follow up sessions. If interested please contact Julia by phone or email to arrange an appointment. **Tel: 01223 305324 Mobile: 07930 874570** Email: [juliabhall@hotmail.com](mailto:juliabhall@hotmail.com). You can pick up a leaflet in the surgery.

*Cynthia Bidwell – Practice Manager*



## Twilight at the Museums in Cambridge

Wednesday 18 February

4 30 – 8 30 pm

Twilight at the Museums is almost here and we are getting ready for destination exploration!



It's time to make the most of those long winter nights as museums and collections across the city open their doors for after dark fun. With thirteen venues offering an exciting range of drop-in and bookable events throughout the evening, there will be loads for families to see and explore. Why not take part in some torch-lit space exploration at the Whipple Museum; discover a world of deep sea darkness at The Polar Museum; or create some 'Creatures of Twilight' at the Museums of Cambridge?

The evening is all about fun and discovery and remember, the more places you visit, the more you will be able to see and do. Pick up a *Twilight 'What's On'* guide and passport from participating venues to help you plan and record your journey.

So wrap up warm, grab a torch and get ready for adventure!

[www.cam.ac.uk/museums/twilight](http://www.cam.ac.uk/museums/twilight)

**Could you fill this space**

**next month**

**with your news?**

**We look forward to hearing**

**from you.**

## Christmas in Winnipeg

I have just returned from an amazing Christmas in Winnipeg.

Of course it was lovely to see my son and his wife who live there, but I have never experienced their severe winter. Since he moved there I have learned so much about the central plains of Canada. Lake Winnipeg is as large as England and, of all Winnipeg characters, Winnie the Pooh must be the most famous. The crops they grow help to feed North America and the temperatures range from around -30° in the winter to +30° in the summer months.



On arrival Tom was apologetic – it was only minus 5° and the river Red hadn't frozen completely so they were still unable to train for their skating speed trials. But for me it was a magical winter learning curve. I bought a good pair of winter boots straight away and was given thermal ski gloves on arrival so never experienced the chilblains I am used to here. As we walked the dogs in the woodlands, around the fields and on the frozen rivers still holding beaver dams and lodges, I marvelled at the colours which they have become used to and perhaps don't really see now. Trees in winter stripped of leaves come in different colours from orange to red to dark black which stand out against the white snow. The snow is light and blows into amazing shapes I have only seen as desert sands. But there was the quiet. There were no bird songs, just the creaking of ice and footsteps. I did see deer, squirrels, rabbits and some birds but the overall silence was stunning.

The other learning curve was with driving. Deep snow is a regular thing and they are geared to deal with it. Ploughs clear car parks – there is little on-line shopping so car parks are important – they shift snow to piles which are then loaded onto trucks and removed to designated fields. Main roads are completely cleared while on minor roads drivers move along on compacted snow with ease, often helped by parking restrictions – most have driveways for their parking so the roads are empty. Some towns have regulations regarding safer tyres, for example in Quebec snow wheels (soft rubber) are compulsory from October until April. Drivers are patient. They wait for at least a 100 yard space before pulling out and then they do so, slowly and carefully. It was minus 26° when I left and I am sure that should it snow here, I will be able to drive with far more confidence!

*Valerie McKee*



## Local Computer, IT & Technical Support

- Virus and malware removal
- PC and laptop troubleshooting
- Custom computer builds
- Laptop screen replacement
- Wireless network configuration
- Website design
- Small business support

Ben Harris  
92 Station Road  
Willingham  
Cambridge

**01954 768325**

[www.bugbytetechnology.co.uk](http://www.bugbytetechnology.co.uk)

newsletters logos leaflets  
signage company stationery  
**Ads** posters magazines  
business cards letterheads advertising **Flyers**

a complete **Graphic Design** service

t 01954 260 407  
m 07941 503 011  
e [siobhan.brown11@ntlworld.com](mailto:siobhan.brown11@ntlworld.com)  
w [www.sb-graphicdesign.co.uk](http://www.sb-graphicdesign.co.uk)

**siobhan brown**  
graphic designer

## GIUSEPPE PIRAN

SPECIALIST PAINTERS & DECORATORS



All aspects of interior and exterior painting  
Local, professional, qualified tradesmen  
Experts in Period home decoration  
Residential and Commercial properties  
Full Public Liability Insurance  
Window-Care repair specialists

w/ [gpiran.co.uk](http://gpiran.co.uk) t/ 01954 201167



**BEAUTY, RELAXATION AND A WARM WELCOME...**

Specialists in Shellac nails, Manicures & Pedicures, Spray Tanning,  
Hair removal, Facials and Massage.



Stockists of Elemis Skincare, Sp@home and much more...

Gift Vouchers now available online at  
[www.englishrosebeautyhouse.co.uk](http://www.englishrosebeautyhouse.co.uk)



16 Berrycroft, Willingham, Cambridge CB24 5JX. Tel: 01954 261176

## Put your love in writing

protect your children & partner with a Will

... talk to Just Wills today!

*"Now I can be there for my family  
just when they need me most."*



Member,  
Society of Will Writers  
& Professional  
Association of Legal  
Services



Since 1989, Just Wills has helped more than  
150,000 families like yours plan for the  
future with our friendly, money-saving  
service and professional expertise.

- Wills, Trust & Probate specialists
- Society of Trust & Estate Practitioners (STEP) qualified solicitors
- Full professional indemnity insurance
- Estate Planning

- ✓ Set up a Trust for a disabled child
- ✓ Protect your family's property & assets
- ✓ Minimise care home fees & funeral costs
- ✓ Reduce Inheritance Tax & Probate fees
- ✓ Look after elderly and vulnerable relatives with Lasting Powers of Attorney

**For a FREE home consultation**

**Phone: 01223 655646**

**Mobile: 07930 197432**

**Email: [info@justwillscambridge.co.uk](mailto:info@justwillscambridge.co.uk)**

Just Wills (Cambridge) is the local office of Just Wills & Legal Services Ltd. Just Wills (Cambridge), St John's Innovation Centre, Cowley Road, Cambridge CB4 0WS

# From the Parish Council

[www.willingham-pc.org.uk](http://www.willingham-pc.org.uk)

## Bus Route 110 – Cottenham & Ely

The Council is pressing the providers of the 110 bus service which runs between Impington and Ely to extend the current loop to Rampton further into Willingham. Although it runs only once a week, on Thursdays, we feel that having the opportunity to get to Ely or Cottenham via public transport is a goal worth pursuing. The decision on whether to proceed will be based on the 'potential usage' – almost impossible to gauge unless the service is actually available, but any evidence the Council can gather would help. Let us know if you would find the route useful. In other bus issues, a new shelter has been installed in Wilford Furlong.

## Bill Kirkman

Councillor Kirkman has retired from the Council. We would like to thank him for his service both to the Council and the wider community during his 45 years in the village. Since his arrival in 1968, Bill's service to the village has included: a member of the Parish Church, including being on the Church Council, Church Warden, Church Secretary and Organist; Primary School Governor and MC of many school events; Chairman of the Scout parent committee (including getting toilets built at the Public Hall, which the then Parish Council thought were unnecessary); Trustee of the British School Trust; Member of the WEA; and latterly Parish Councillor – in particular handling much of the interviewing of applicants for paid positions in the Council. We wish him all the best for the future.

## The Bowls Club

Despite the recently announced demise of the Bowls Club, the majority of the members wanted it to carry on and enough volunteers have now been found to form a committee. There is plenty of work to be done, but the Council is hoping to meet with the new committee to discuss ways to help them continue. We know that the drainage of the Recreation Ground is a potential problem but recent correspondence with the local Drainage Boards has revealed the possibility of some channel clearance work. We will report on the plans when we know more.

## Over Day Centre

The Over Day Centre provides care for the frail and elderly of Over and the surrounding villages. Their aim is to promote and maintain their clients' quality of life through social contact, recreation and informative activities. Willingham residents make up the largest group amongst their users, and we were happy to support them with their successful campaign last year in obtaining a new minibus. This year, they are looking to replace some furniture, and the Council has donated £1000 to this very worthwhile cause.

## 2014

Last year was a busy one in the village, both for the Council and other voluntary groups – particularly the Willingham Action Group (WAG) and the Willingham Youth Trust (WYT). The Youth Facility in the Ploughman Hall is now

open (at last!) and despite an initial shortfall in funds the first phase of the QEII playground project should be underway soon. The Community Orchard on the old recreation ground is now fully planted and all trees have been sponsored. The Public Hall has had minor repairs made, and a new lease has been signed by the Public Hall Users Committee establishing a sound basis for its continued occupation. The Council has purchased the lease on the former traveller site on Meadow Road from the County Council. Gallaghers will be removing the concrete and tarmac and it is hoped that WAG will have some trees left to plant once that has been done. We continue to campaign to get a solution to the B1050, especially the impact that Northstowe will add and are working to sort the Lode and Recreation Ground issues.

## Silver Street

Finally, we have been contacted by a parishioner who says that the dog fouling in Silver Street has become much worse over recent weeks. Please could we remind residents to clear up after their pets and use the many dog bins which are available?

## Contact Details:

Your current Parish Councillors and their contact details (in alphabetical order) are:-

Mr A Cook (Chairman of the Council)	01954 260325
Dr R Croucher (Halls Lead Councillor)	01954 261113
Mr N Harris	07792 611226
Mr D Jacques	01954 261353
Mr P King (Vice Chairman)	01954 260780
Mr D Law (Planning Committee Chairman)	01954 202188
Mr R Manning	01954 261235
Mr S Mellows (Cemetery Lead Councillor)	01954 270063
Mr A Slater	01954 261455
Mr J Smith (Leisure & Amenities Lead Councillor)	01954 261141
Mrs J Vincent-Pilsworth	01954 260929
Mr J Watson	01954 200245

*Meeting dates are published on the website, the notice board outside the public hall in the High Street, at the library and are listed below. Members of the public are welcome to attend and speak briefly or ask questions. Names will be taken down at the beginning of each meeting together with the electoral register number to ensure everyone has a fair chance to speak within the allowed time (15 minutes in total for all speakers – 3 mins max per person).*

*Meeting Dates: 4 February, 4 March, 8 April. The meetings are held in the Octagon and they start at 7.30 pm.*

*The parish council office is open Monday to Friday from 10 am to 1 pm, except Bank Holidays and there is an answer-phone service outside office hours.*

*The contact details are: Parish Council Office, Ploughman Hall, West Fen Road, Willingham CB24 5LP.*

*Tel. 01954 261027: E-mail [email@willinghampc.org.uk](mailto:email@willinghampc.org.uk)*

*Clerk: Mrs Mandy Powell*

*Assistant: Mrs Halina Szulakowska*





Great local classes including aerobics, body conditioning, Zumba, FitSteps and Just Jhoom

Contact Becky on 01954 712819 / 07905097961

E-mail [becky@beckysfitness.co.uk](mailto:becky@beckysfitness.co.uk)

Check out my website for all times [www.beckysfitness.co.uk](http://www.beckysfitness.co.uk)



Varsity is a local driving school that aims to make every lesson with you as fun and enjoyable as possible, while keeping you on track to get you through your driving test with confidence  
Find out more at [www.varsitydrivingschool.co.uk](http://www.varsitydrivingschool.co.uk)  
on Facebook or call Peter on 07515915871

## Ward Solutions Ltd

We specialise in the installation of flue lining systems, wood burner's and fireplaces, 15 years experience.

We can supply you with a stove or install one supplied by you.

Other services include- chimney re pointing, smoke tests, And fitting pots and cowl.



HETAS registered

Call or email for a free survey

0800 357 92 91  
01954 200 021

[info@wardsolutions.co.uk](mailto:info@wardsolutions.co.uk)



The Original Oven Cleaning Specialists. Put the sparkle back into your oven with a call to **Ian Morley** your local Ovensclean specialist.

Contact Ian on: **07584 684853**

## ACA Heating & Plumbing

46 Church St  
Willingham  
Cambridge  
CB24 5HT

Gas and oil boiler servicing, breakdowns  
Boiler upgrades and heating installations  
Bathroom and Wetroom installations  
Un-vented cylinder installations/servicing  
All types of plumbing and heating works undertaken  
Local friendly services with over 14 years experience



Andrew Leahy mobile: 07833 204499  
Email: [andy@acaplumbing.co.uk](mailto:andy@acaplumbing.co.uk)  
[www.acaplumbing.co.uk](http://www.acaplumbing.co.uk)

## Need Glasses?

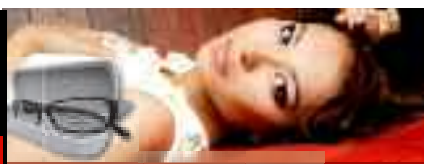
**Save up to 75%:**

~High/complex prescription  
~Premium frames & lenses

• Reglaze your own specs\*  
• FREE NHS Specs\*  
• Specs for all sports  
• Large selection of stock

\*Complete specs from just  
**£9.00!\***

\*T & C's apply, please ring for details  
~For customers aged 16 and over only~



## SAVE MONEY

Buy Direct from ALL EYES Specs

Specs repairs & emergency supply\*

20 Norman Way Ind. Park  
Over, Cambridge CB24 5QE  
Mon - Fri (9.00am - 5.00pm)

Website: [www.all-eyes.co.uk](http://www.all-eyes.co.uk)

Tel: **01954 231545**

Mobile: 07824 706969

(Your local specs makers since 1987)

~Please ring for an appointment~



## David Wake Carpentry and Joinery

• Fitted Kitchens • Specialised Joinery  
• Doors and windows • Property repairs

Office: 01954 260678 Mobile: 07836 290112

## JANS CURTAINS

[janscurtains.co.uk](http://janscurtains.co.uk) ☎ 07738814719

20 years of experience

## G.M. Pake & Son Ltd electrical contractor

- A complete range of work domestic, commercial, agricultural & industrial
- New installations
- Re-wiring
- Portable appliance testing
- Periodic inspections
- Surveying

Tibbitts Farm,  
Meadow Road,  
Willingham,  
Cambridge,  
CB24 5JL.

tel/fax 01954 260 534  
mobile 07767 79 33 79

A wealth of experience  
– a price that's right



## Willingham Post Office

15 High Street, Willingham CB24 5ES

☎ 01954 260331

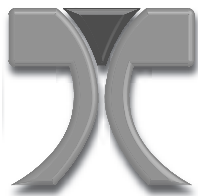
**Mon – Fri 08:30 – 18:00 Sat 08:30 – 17:30**

- All mail services, including special delivery
- Travel Currency, Travel Money Cards, Travel Insurance and MoneyGram
- Passport Photographs, Passport Check and Send Service
- Vehicle Tax and Bill payments
- Financial Products – Insurance, ISA, Growth Bonds, Credit Cards and much more
- Broad Band and Phone Packages, Phone Top-Ups
- Free Cash withdrawals for most major Banks as well as Cash & Cheque Deposits
- Photocopying and Laminating Service
- Great range of Greeting Cards, Stationery and Pack & Post Items

# VILLAGE DIARY

DATE	EVENT	ORGANISATION	VENUE	EXTRA INFO
Mon 2 Feb	<i>Isles of Scilly</i> with Peter Walker	Gardening Club	Social Club	7 30 pm, see p10
Mon 2 Feb	CAP Money Course	CAP Money	Baptist Church	7 45 pm, contact Debbie Jackman 01954 261195 for info
Tue 3 Feb	Story Time for Under 5s	Library	Library	2 – 2 30 pm, see p11
Wed 4 Feb	AAA Screening	Surgery	Surgery	See p16
Wed 4 Feb	<i>A Night in the Life of a Badger</i> with Peter Pilbeam	Engage in the Afternoon	Library	2 – 3 30 pm, see p11
Wed 4 Feb	Parish Council Meeting	Parish Council	Octagon	7 30 pm, see p19
Wed 4 Feb	Curry and <i>From Downing Street to Great Shelford</i> with Ian Kydd	Life Matters	Baptist Church	See p13
Fri 6 Feb	Hempsals Farm Cured Meats & Wine Evening	Willingham School Association	Primary School	See p8
Sat 7 Feb	Cake Stall	Parish Church	Parish Church Porch	10 am, see p12
Sat 7 Feb	Stall	Rosie in Stitches	Bar Hill Community Market	10 30 am – 2 pm, see p15
Mon 9 Feb	Coffee Morning	Salvation Army	Salvation Army Hall	10 30 am – 12 noon, see p12
Mon 9 Feb	<i>Robert Sayles Dig</i> with Alison Dickens	Women's Institute	Social Club	7 30 pm, see p8
Mon 9 Feb	CAP Money Course	CAP Money	Baptist Church	7 45 pm, contact Debbie Jackman 01954 261195 for info
Wed 11 Feb	Carers Support Meeting	Surgery	Surgery	2 – 4 30 pm, see p16
Thu 12 Feb	Luncheon Club	Salvation Army	Salvation Army Hall	12 30 pm, see p12
Mon 16 Feb	Joint Carers & Adult Drop-in Event	Carers Support Team	Community Room, Tesco, Bar Hill	10 30 am – 1 30 pm, see p9
Mon 16 Feb	Subject: <i>Textures</i> Photoshop Tutorial: <i>Spring Colours</i>	Photography Club	Baptist Church	8 – 10 pm, see p5
Wed 18 Feb	Carers Drop-in Event	Carers Support Team	Cambourne Library	1 30 – 3 30 pm, see p9
Wed 18 Feb	Hearing Help Session	Hearing Help Service	Surgery	2 – 4 pm, see p16
Wed 18 Feb	Twilight at the Museums in Cambridge	Museums of Cambridge	Museums of Cambridge	4 30 – 8 30 pm, see p17
Sat 21 Feb	Breakfast and Topical Talk	Men's Breakfast	Baptist Church	7 45 am, see p13
Sat 21 Feb	Charity Lunch	For Magpas	3 Love Lane	1 pm, see p12
Mon 23 Feb	Coffee Morning	Salvation Army	Salvation Army Hall	10 30 am – 12 noon, see p12
Mon 23 Feb	Entertainment with Paul and Friends	Mothers' Union	Octagon	2 30 pm, see p12
Thu 26 Feb	Luncheon Club	Salvation Army	Salvation Army Hall	12 30 pm, see p12

THIS MAGAZINE WAS PRINTED BY



## Target Print Ltd

Incorporating *QUAYSIDE PRESS*  
And **King Printers of Over**

Broad Lane, Cottenham, Cambridge CB24 8SW

Telephone: **01954 251189**

Email: [print@targetprint.org](mailto:print@targetprint.org)

Web: [www.targetprint.org](http://www.targetprint.org)

- Brochures
- Manuals
- Flyers
- Letterheads
- Compliment Slips
- Invoices
- Statements
- Purchase Orders
- Business Cards
- Folders
- Booklets
- Posters
- Postcards
- Envelopes
- Continuous Stationery
- Menus
- Invitations
- Labels
- Post-it® Notes
- and much more ...



Over Road, Willingham, Cambs, CB24 5EU

- ❖ High quality pet food and supplies
- ❖ Poultry and small holding feed and equipment
- ❖ Horse Feed and Bedding
- ❖ Riding clothing, hats, boots, body protectors, brushes
- ❖ Fuel- Calor Gas, logs, kindling, house and smokeless coal
- ❖ Butchery – Locally sourced meat and homemade sausages and burgers, home cured bacons, home cooked hams and fresh fruit and vegetables.



Open 7 Days a week

Monday – Saturday 8.30-5.30pm Sunday 9.00am -2pm

[www.highgatecountrystore.co.uk](http://www.highgatecountrystore.co.uk)



Tel 01954 260798

## Holistic Timeout



Back, Neck & Shoulders >> **Mini Treatment £12.00**

Thermal Auricular Therapy (Hopi Ear Candling)

Reflexology (Face or Feet)

Indian Head Massage

Hot Stone Massage

Swedish Massage

Aromatherapy

Bookings & enquiries contact:

Astrid-VTCT Level 3 Diploma-

**Phone 07546 094499**

Based in Willingham

## Stan the COMPUTERMAN.co.uk

12 Station Road, Willingham

SOLVES WIDE RANGE OF PROBLEMS  
WITH YOUR COMPUTER OR IT EQUIPMENT.  
GIVES TUITION AND CONSULTATIONS.

Repair of

Laptops | Desktops | Tablets  
Smartphones | Game consoles



0792 820 8563

01223 790 690

Free Call out

*Reduced prices for budget pensioners.*



*Our salon offers all aspects of  
hairdressing including wedding  
hair with a personal touch. We can  
come to you on your special day.*

**Tel: 01954 260224**

38 Church Street, Willingham CB24 5HT  
[www.machairstudio.co.uk](http://www.machairstudio.co.uk)



## SWITCH ELECTRICIANS

ALSO  
KITCHEN INSTALLATIONS  
Fuse Board upgrades  
Additional Lights & Sockets  
Friendly & Reliable service  
Fully Qualified - Part P registered  
WILLINGHAM BASED  
Dave Amos 07836 744807  
[www.switch-electricians.co.uk](http://www.switch-electricians.co.uk)  
[dave@switch-electricians.co.uk](mailto:dave@switch-electricians.co.uk)







# VILLAGE DIRECTORY

Please notify *Willingham News* of any changes

<b>Council</b>	Parish Council ( <i>See full details on page 19</i> )		01954 261027
	County Councillor	Peter Hudson	peter.hudson@cambridgeshire.gov.uk
	District Councillor	Mr R Manning	01954 261235
	District Councillor	Mr B R Burling	01954 230168
	District Councillor	Mrs P S Corney	01954 213221
<b>Services</b>	Police		101
	Surgery		01954 260230
	Dispensary for repeat prescription requests		01954 260073
	Pharmacy		01954 261787
	Over Surgery		01954 231550
	Urgent Care Cambridgeshire		111
<b>Schools</b>	Primary School	Mrs V Francis	01954 283030
	Willingham Out Of School Club (3–6 pm only)	Mr D Carminati	01954 283033
	Phoenix Prep School	Gill Cooke	01954 263113
	School Governors Chairman	Jonathan Lewis	01954 283030
	School Association	c/o school	01954 283030
	British School Trust	Lynda Blunt	01954 261309
<b>Children</b>	Beavers, Cubs and Scouts	Mrs M Dellar	01954 260045
	Ducklings Toddler Group	Rachel Robinson	07963 870971
	Honeypot Pre-School (term-time only)	Mrs D VanDort	01954 201567
	Tigger Toddlers	Jenny Rayner	01954 270122
	Koala Kids		01954 260046
	Holiday Playscheme	Phoenix School	
	Willingham Guides and Senior Section	Lynn McGoff	01954 261296
	Ladybird Borland's School Of Dance	Mrs L Borland	01954 203347
	Bubbles/Messy Church	Rev L Liversidge/ Heather Mellows	01954 263187 01954 270063
	Bumps and Babies Group	Emma Tregenna	01954 261775
	TOPS (Baptist Church Toddlers Group)	Hilary Wylie	01954 260051
	Little Notes Music group	Emma Tregenna	01954 261775
	Kids' Friday Club (Baptist Church)	Loriane Bald	01954 261189
<b>Halls</b>	Ploughman Hall Bookings	through Parish Council	01954 261027
	Wilford Furlong Centre		01954 261445
	The Octagon	Rosemary Mumford	01954 260934
	Baptist Bookings and Rentals	Emma Launchbury	01954 263108
	Salvation Army Hall Bookings	New details soon to be available	
<b>Local Representatives</b>	Allotments	Sue Ayling	01954 260718
	Billavincea Lodge 8719	Mr M Scrivener	01480 413533
	BreatheEasy Cambridge (British Lung Foundation)	David Hart	01954 260204
	<i>Cambridge News</i> Correspondent	Anne Kirkman	01954 260393
	Fen Edge Community Association	Alan Leeks	01954 250061
	Willingham Action Group (WAG)	Mike Tidball	01954 260647
	Willingham Combined Charities	Mrs Gail Cook	01954 231272
	Workers' Educational Association	Rosemary Mumford	01954 260934
<b>Clubs</b>	Gardening Club	Mrs C Bailey	01954 260794
	Social Club	Sarah Rutherford	07989 242155
	Willingham Jam Club	Julian Eales	01954 201818
	Willingham Photography Club	Christopher Cross	01954 260790
	Willingham Walkers	Mike Tidball	01954 260647
	Willingham Youth Club	Linda Liversidge	01954 263187
	Women's Institute	Jacky Sparks	01954 261831
	Women's Royal British Legion	Mrs M Few	01954 260124
<b>Sport</b>	Badminton	Sarah Custance	01954 202005
	Bowls Club	David Hart (Secretary)	01954 260204
	Cricket Club	Mr R Ambrose	01954 260446
	Cycling Club – www.willinghamwheels.com	Paul Knighton	07787 530394
	Ladies' Hockey	Teresa Hutchcraft	01954 260177
	Tennis Club	John Graham	01954 231968
	Willingham Diamonds Netball Club	Hannah Francis	01954 260993
	Willingham Running Club	Gerry Mears	07511 131645
	Willingham Sports Pavilion	Trudy Greygoose	07786 230559
	Willingham Wolves (Boys & Girls Football)	www.willinghamwolvesfc.co.uk	
<b>Churches</b>	Mothers' Union (Branch Leader)	Mrs S Hayden	01954 260363
	Baptist Church	Rev Paul Joel	01954 260538
	Methodists (Ministerial Contact)	Rev Hilary Cheng	01223 700778
	Roman Catholic Priest	Fr Edward Tredota	01480 462192
	Salvation Army	Major Thea Wood	01223 233492
	Parish Church	Rev Linda Liversidge	01954 263187



YOUR SEARCH FOR YOUR KIND  
OF ESTATE AGENT IS OVER...



...WELCOME HOME

The best way to buy, sell or let your home is by dealing with people who have a genuine interest and enthusiasm for property. Tyler's people. Join us for a coffee and a chat in one of our new-look shops and discover how the Tyler's way of thinking, combined with over 25 years in the business, can change your view of estate agents. **It's all part of our passion for homes.**

CALL US ON 01223 214400

Sales & lettings | Shops in Cambridge, Histon and Willingham

TYLERS.NET

Passionate  
about...



Handpicked Properties with Private Pools

A selection of beautiful individual villas & houses in tranquil rural settings & areas of traditional local culture.

SPAIN • BALEARICS • LANZAROTE • FRANCE • ITALY • CROATIA  
• GREECE • PORTUGAL

Your Local  
Travel  
Company



Now in our 25th year

Call for brochure or to speak to one of our specialists

**01954 261431** or visit our website  
[www.vintagetravel.co.uk](http://www.vintagetravel.co.uk)

  HOLIDAYS WITH  
100% FINANCIAL PROTECTION

Paying too much tax?  
Paperwork a burden?  
Accounts fee expensive?  
Like a business review?

At **Uttridge Accounting** we understand your business and tax needs and provide a range of services to meet your requirements, including:

- Accounts Preparation
- Self Assessment
- Taxation Advice
- Business Start-ups
- Business Planning
- Payroll Services
- Online Accounting


For professional accounting expertise, attentive personal service and great value for money, contact us today.

 **Uttridge**  
ACCOUNTING  
Chartered Certified Accountants

**ACCA**

01954 263000

[info@uttridge-accounting.co.uk](mailto:info@uttridge-accounting.co.uk)  
[www.uttridge-accounting.co.uk](http://www.uttridge-accounting.co.uk)



SPECIALISING IN THE  
SALE OF HOMES IN  
WILLINGHAM AND THE  
SURROUNDING VILLAGES

**HOCKEYS**  
ESTABLISHED 1885

